

Information in the yield curve: A Macro-Finance approach



Working Paper Research

by Hans Dewachter, Leonardo Lania and Marco Lyrio

March 2014 No 254

Editorial Director

Jan Smets, Member of the Board of Directors of the National Bank of Belgium

Statement of purpose:

The purpose of these working papers is to promote the circulation of research results (Research Series) and analytical studies (Documents Series) made within the National Bank of Belgium or presented by external economists in seminars, conferences and conventions organised by the Bank. The aim is therefore to provide a platform for discussion. The opinions expressed are strictly those of the authors and do not necessarily reflect the views of the National Bank of Belgium.

Orders

For orders and information on subscriptions and reductions: National Bank of Belgium,
Documentation - Publications service, boulevard de Berlaimont 14, 1000 Brussels.

Tel +32 2 221 20 33 - Fax +32 2 21 30 42

The Working Papers are available on the website of the Bank: <http://www.nbb.be>.

© National Bank of Belgium, Brussels

All rights reserved.

Reproduction for educational and non-commercial purposes is permitted provided that the source is acknowledged.

ISSN: 1375-680X (print)

ISSN: 1784-2476 (online)

Abstract

We use a macro-finance model, incorporating macroeconomic and financial factors, to study the term premium in the U.S. bond market. Estimating the model using Bayesian techniques, we find that a single factor explains most of the variation in bond risk premiums. Furthermore, the model-implied risk premiums account for up to 40% of the variability of one- and two-year excess returns. Using the model to decompose yield spreads into an expectations and a term premium component, we find that, although this decomposition does not seem important to forecast economic activity, it is crucial to forecast inflation for most forecasting horizons.

Key Words: Macro-finance model, Yield curve, Expectations hypothesis.

JEL Classification: E43, E44, E47.

Authors:

Hans Dewachter, National Bank of Belgium, Research Department; Center for Economic Studies, University of Leuven and CESifo; email: hans.dewachter@nbb.be.

Leonardo Iania, Corresponding author, National Bank of Belgium, Research Department; Louvain School of Management (UCL); email: leonardo.iania@uclouvain.be.

Marco Lyrio, Insper Institute of Education and Research. Address: Rua Quatá 300, São Paulo, SP - Brazil, 04546-042; email: marco.lyrio@insper.edu.br.

The views expressed are solely our own and do not necessarily reflect those of the National Bank of Belgium. This project was undertaken while Leonardo Iania was visiting the Research Department of the National Bank of Belgium, whose hospitality and financial support are gratefully acknowledged. We thank Raf Wouters, Stefaan Ide, the seminar participants at the Center for Economic Research and Graduate Education - Economics Institute (CERGE-EI), CIMF-IESEG Conference on "The Yield Curve and New Developments in Macro-finance: What have we learnt from the 2007-2010 financial crises?", Banco de España–Bank of Canada Workshop on "Advances in Fixed Income Modeling", and the 5th CSDA International Conference on Computational and Financial Econometrics (CFE). Marco Lyrio is grateful for financial support from the CNPq-Brazil (Project No. 303066/2010-5).

The views expressed in this paper are those of the author and do not necessarily reflect the views of the National Bank of Belgium or any other institutions to which the author is affiliated.

TABLE OF CONTENTS

1. Introduction.....	1
2. Affine models for bond and term premiums	2
2.1 Bond and term premiums.....	2
2.2 The Extended Macro-Finance model of bond and term premiums	2
2.2.1. Macro-finance framework	2
2.2.2. The Extended Macro-Finance model	4
2.3 Estimation	5
3. Empirical results.....	6
3.1 Bond risk premium.....	6
3.2 Term premium.....	8
3.2.1. Decomposing the yield curve.....	8
3.2.2. Macroeconomic information in the yield curve.....	9
4. Conclusion.....	14
References	15
Tables.....	18
Figures	25
National Bank of Belgium - Working papers series	29

1 Introduction

The term structure of interest rates has long been recognized as a potential source of information about future macroeconomic developments. This prevalent belief on the forward-looking characteristic of the yield curve is best represented by the expectations hypothesis (EH). According to this theory, the slope of the yield curve reflects market expectations of the average future path of short-term interest rates. Following the EH, it makes sense then to use yield curve information to forecast macroeconomic aggregates such as real economic activity and inflation.¹

In its pure version, the EH implies that bond yields are fully determined by the expected path of the short-term interest rate with zero term premium. The extended version of the EH allows for a maturity-specific constant term premium, and forms the basis of recent latent factor, semi-structural or structural models of the yield curve.² If, however, bond yields consist in part of significant time-varying term premiums not only does the EH not hold, and therefore should not be assumed in yield curve models, but also the information content of the yield curve with respect to macroeconomic aggregates may be affected. Therefore, determining the contribution of the expectations and term premium components in bond yields might allow a more precise interpretation of the dynamics of the term structure of interest rates and the construction of better information variables for macroeconomic forecasting.

The identification of the expectations and term premium components of the yield curve is, however, not straightforward. Despite the fact that the expectations theory has been rejected in a number of empirical studies,³ Swanson (2007) and Rudebusch et al. (2007) show that term premium estimates can differ by more than four percentage points depending on the model used in the decomposition. This lack of identification of term premiums is not surprising given the prominent role of unobserved long-run interest rate expectations in the expectations component of the yield curve (see Kozicki and Tinsley (2001)).

In this paper, we investigate the failure of the EH and its consequences for macroeconomic forecasting. We adopt the Extended Macro-Finance (EMF) model of Dewachter and Iania (2011), which augments standard MF models of the term structure of interest rate⁴ with the inclusion of three financial factors and two stochastic trends. The first two financial factors reflect financial strains in the money market, while the third financial factor is

¹Estrella (2005) investigates the theoretical reasons behind the predictive power of the yield curve to forecast output and inflation. Regarding the prediction of economic activity, see, among others, Estrella and Hardouvelis (1991), Estrella and Mishkin (1998), Plosser and Rouwenhorst (1994), and Stock and Watson (1989). For inflation, see, for example, Fama (1990), Mishkin (1990), Estrella and Mishkin (1997), and Jorion and Mishkin (1991).

²See, for example, Bekaert et al. (2010), De Graeve et al. (2009), Dewachter and Lyrío (2008), Hördahl et al. (2008), and Vasicek (1977).

³See Fama (1984), Jones and Roley (1983), Mankiw and Summers (1984), and Shiller et al. (1983). For more recent studies, see Cochrane and Piazzesi (2005), Cochrane and Piazzesi (2009), Duffee (2011), and Joslin et al. (2009). These papers report statistically and economically significant time-varying risk premiums.

⁴See, for example, Ang and Piazzesi (2003), Bekaert et al. (2010), Hördahl et al. (2006), and Rudebusch and Wu (2008).

designed to capture time variation in bond risk premiums. The two stochastic trends allow for highly persistent processes capturing time variation in long-run inflation expectations and in the equilibrium real rate, two key components of long-run interest rate expectations. We analyze, through the lens of this MF model, two relevant issues related to the failure of the EH: the dynamics of bond risk premiums and the information content of the yield spread and its expectations and term premium components for the forecasting of economic activity and inflation.

Related literature includes Hamilton and Kim (2002) who decompose yield spreads into an expectations and a term premium component to forecast GDP growth. Ang et al. (2006) and Favero et al. (2005) adopt the same approach while Rudebusch et al. (2007) assesses the implications of structural and reduced-form models for the relationship between term premium and economic activity. Since each of these studies adopts a different technique to decompose yield spreads, they reach different conclusions regarding the importance of each component in the forecasting of output growth. We are not aware of any study that uses such decomposition to forecast inflation.

Our analysis contributes to the current MF literature in several ways. First, we show that the EMF model is able to extract reasonable estimates for the term premium dynamics. The dynamics of our term premium is similar to the ones reported by Kim and Wright (2005), which is considered by Rudebusch et al. (2007) as one of the most representative measure among the measures examined by these authors. This is achieved by the use of a single factor as the main driving force behind bond risk premiums. This factor turns out to be similar to the return-forecasting factor proposed by Cochrane and Piazzesi (2005), the CP factor.

Second, we find that (*i*) the expectations component of short-term bonds is mainly driven by monetary policy shocks while that of long-term bonds is affected by all macro shocks and in particular long-run inflation shocks, and that (*ii*) movements in the term premium component are mainly associated with financial shocks. These results show that the relevance of introducing stochastic endpoints and risk premiums dynamics in a MF model is not limited to the improvement of the yield curve fit (as shown in Dewachter and Iania (2011)), but is also essential in the identification of bond yields' expectations and term premium components.

Third, we show that while the yield spread decomposition is crucial for forecasting inflation changes, it is less relevant in the forecasting of real activity. Our results suggest that looking at the yield spread to infer future changes in inflation (via, for example, the Fisher hypothesis) might be suboptimal since the information content of the yield spread is affected by the presence of a sizeable, time-varying risk premium component. This finding is robust to the inclusion of control variables. For real activity measures like real GDP growth and the output gap, the decomposition of the yield spread is less important. The remainder of the paper is organized as follows. Section 2 explains briefly the EMF model and discusses the implied decomposition of the yield curve in expectations and term premium components. Section 3 describes the data and the Bayesian model specification

used to estimate the EMF model. Section 4 analyses the model-implied risk premiums and focus on the yield decomposition and its impact in the forecasting of real activity measures and inflation. The main findings are summarized in the conclusion.

2 Affine models for bond and term premiums

2.1 Bond and term premiums

A standard decomposition of the default-free yield curve separates the expectations and term premium components of n -period zero-coupon bond yields at time t as follows:

$$y_t^{(n)} = \underbrace{\frac{1}{n} \sum_{\tau=0}^{n-1} E_t [y_{t+\tau}^{(1)}]}_{\text{Expectations component}} + \underbrace{\chi_t^{(n)}}_{\text{Term premium component}}. \quad (1)$$

The expectations component denotes the average expected one-period interest rate over the maturity of the bond and the term premium the additional compensation to lock in the money over n periods. The term premium can be written as the average one-period bond risk premium obtained from holding the bond to maturity (Ludvigson and Ng (2009)):

$$\chi_t^{(n)} = \frac{1}{n} \sum_{\tau=0}^{n-1} E_t [rx_{t+\tau, t+\tau+1}^{(n-\tau)}], \quad (2)$$

where $rx_{t+\tau, t+\tau+1}^{(n-\tau)}$ denotes the one-period excess log return of a n -period bond and is defined as:

$$rx_{t, t+1}^{(n)} = \ln(P_{t+1}^{(n-1)} / P_t^{(n)}) - y_t^{(1)}. \quad (3)$$

Under the extended EH, the one-period risk premium is constant but maturity specific, i.e. $E_t[rx_{t+\tau, t+\tau+1}^{(n-\tau)}] = \phi(n)$, and all variation in the yield curve is generated by changes in market expectations about future short rates. A failure of the EH implies that the yield curve reacts to changes in both the expected short-term rates and the term premiums.

2.2 The Extended Macro-Finance model of bond and term premiums

2.2.1 Macro-finance framework

The class of essentially affine MF models allows one to express the yield on a n -period bond at time t , $y_t^{(n)}$, as an affine function of a state vector, X_t :

$$y_t^{(n)} = A_{y,n} + B_{y,n} X_t. \quad (4)$$

More specifically, this class of models, introduced by Duffee (2002) and Ang and Piazzesi (2003), posits (i) a Gaussian linear state space dynamics:

$$X_{t+1} = C + \Phi X_t + \Sigma \varepsilon_{t+1}, \quad \varepsilon_{t+1} \sim N(0, I), \quad (5)$$

and (ii) an exponential affine structure on the pricing kernel m_{t+1} :

$$m_{t+1} = \exp(-i_t - 0.5\Lambda_t'\Lambda_t - \Lambda_t\varepsilon_{t+1}),$$

with

$$\begin{aligned} i_t &= \delta_0 + \delta_1'X_t, \\ \Lambda_t &= \Lambda_0 + \Lambda_1X_t. \end{aligned} \tag{6}$$

Imposing the no-arbitrage condition on the zero-coupon bond price, i.e. $P_t^{(n)} = E_t(m_{t+1}P_{t+1}^{(n-1)})$, results in an affine yield curve representation, see Eq. (4), where $A_{y,n}$ and $B_{y,n}$ satisfy the well-known no-arbitrage difference equations (see e.g. Duffee (2002) and Ang and Piazzesi (2003)).

The model summarized by Eqs. (4) and (5) allows an affine representation of the yield components in Eqs. (1) and (2). This is achieved with the use of Eq. (3) and the relation linking bond prices to bond yields:

$$y_t^{(n)} = -\frac{\ln P_t^{(n)}}{n}, \tag{7}$$

since $P_t^{(0)} = 1$. Next, we specify each factor included in the EMF model.

2.2.2 The Extended Macro-Finance model

The EMF model incorporates eight state variables sorted in three groups. The first group includes three observable macroeconomic factors (inflation, π_t , the output gap, \tilde{y}_t , and the central bank policy rate, i_t^{cb}). The second group consists of three latent financial factors. The first two are related to the overall liquidity risk in the money market ($l_{1,t}$ and $l_{2,t}$, respectively), while the third ($l_{3,t}$) drives the one-period risk premium. The third group contains two stochastic trends modelling the long-run inflation expectation, π_t^* , and the equilibrium real rate, ρ_t . The state vector is, therefore, given by:

$$X_t = [\pi_t, \tilde{y}_t, i_t^{cb}, l_{1,t}, l_{2,t}, l_{3,t}, \pi_t^*, \rho_t]'. \tag{8}$$

The inclusion of the observable macroeconomic variables is standard in MF models. The introduction of liquidity factors is motivated by recent evidence documenting the impact of liquidity shocks on the yield curve (see Christensen et al. (2009), Liu et al. (2006)). The liquidity factors are linked to tensions in the money market, which can be measured by the TED spread, i.e. the spread between the unsecured money market rate, i_t^{mm} , and the 1-quarter Treasury bill (T-bill) rate, $y_t^{(1)}$. The liquidity factors decompose the TED spread in specific dimensions of liquidity risk. The spread factor $l_{1,t}$ represents a convenience yield from holding T-bills and can be seen as a flight-to-quality component. A flight-to-quality (i.e. to government bonds) is typically followed by a widening of the spread between the yield on secured or collateralized money market rate, i_t^{repo} , and the T-bill rate. The spread factor $l_{2,t}$ is identified by the difference between unsecured and

secured money market rates and reflects a counterparty, credit risk component. Formally:

$$\begin{aligned} TED_t &= i_t^{mm} - y_t^{(1)} = l_{1,t} + l_{2,t}, \\ l_{1,t} &= i_t^{repo} - y_t^{(1)}, \\ l_{2,t} &= i_t^{mm} - i_t^{repo}. \end{aligned} \tag{9}$$

The third financial factor ($l_{3,t}$) is motivated by evidence from Cochrane and Piazzesi (2005) and Joslin et al. (2010) showing that a large fraction of the variation in bond risk premiums cannot be explained by macroeconomic factors but should be modelled by an additional return-forecasting factor. In the EMF model, this factor is identified by restrictions on the prices of risk such that it accounts for all the time variation in the one-period risk premium across the yield curve. Finally, the third group of state variables includes two stochastic trends that obtain their macroeconomic interpretation through the following cointegrating restrictions:⁵

$$\begin{aligned} \lim_{s \rightarrow \infty} E_t [\pi_{t+s}] &= \pi_t^*, \\ \lim_{s \rightarrow \infty} E_t [i_{t+s}^{cb}] &= \rho_t + \pi_t^*. \end{aligned} \tag{10}$$

2.3 Estimation

The EMF model contains 92 parameters represented by the vector θ . We estimate the model using a standard Metropolis-Hasting algorithm based on relatively loose priors reflecting standard beliefs regarding the macroeconomic dynamics (see Smets and Wouters (2007), among others).⁶ We check convergence by means of standard convergence tests.⁷ We estimate the EMF model on U.S. quarterly data over the period 1960:Q1-2008:Q4 (196 obs.), making use of four groups of information variables: (i) standard macroeconomic series; (ii) yield curve data; (iii) money market rates; and (iv) data on inflation forecasts and potential output growth. The first group contains annualized inflation based on the quarterly growth of the GDP deflator, the output gap constructed from data provided by the Congressional Budget Office (CBO), and the central bank policy rate represented by the effective federal funds rate. The data are obtained from the Federal Reserve Bank of St. Louis FRED database and are assumed to be observed without errors. The second group includes per annum zero-coupon yield data for maturities of 1, 4, 8, 12, 16, 20, and 40 quarters from the Fama-Bliss Center for Research in Security Prices (CRSP) bond files with the exception of 40-quarter yields obtained from Gürkaynak et al. (2007). We assume all yields are measured with an error. The third group includes the 1-quarter Eurodollar rate (i_t^{Ed}) from 1971:Q2 to 1986:Q1 and the 1-quarter London Interbank offered rate - LIBOR (Lb) (i_t^{Lb}) for the period after that, as our measure for the unsecured money market rate (i_t^{mm}), both from Datastream.⁸ The secured money market rate (i_t^{repo}) is

⁵See Dewachter and Iania (2011) for details on the identification restrictions for these stochastic trends.

⁶Table 1 of the online Appendix to this paper lists the type of distribution, mean and standard deviation for the prior of the parameter vector θ .

⁷For details of the estimation method, see Dewachter and Iania (2011).

⁸The LIBOR rate is an average of rates at which banks offer funds (offer side), while the Eurodollar

represented by the government-backed collateral repo rate (GC-repo) from Bloomberg (ticker RPGT03M). The fourth group includes survey data on the average 4- and 40-quarter inflation forecasts retrieved from the Survey of Professional Forecasters (Federal Reserve Bank of Philadelphia) and used to identify long-run inflation expectations, and data on potential output growth measured as the quarterly growth of CBO potential output and used to identify the equilibrium real rate.

In the forecasting exercise of Section 3.2.2, we also use inflation forecasts from the Greenbook dataset provided by the Federal Reserve Bank of Philadelphia for the period 1974:Q2 to 2005:Q4 (127 obs.). The data consist of annualized quarterly growth rate of the GDP deflator and end in 2005 due to the five-year lag between the forecast and the release date. Table 1 presents the summary statistics of all the data used in the estimation.

3 Empirical results

Section 3.1 discusses the implications of the estimated EMF model and the implied decomposition of the yield curve for the prediction of excess bond returns. Section 3.2 assesses the impact of such decomposition for the prediction of real economic activity and inflation.

3.1 Bond risk premium

The EMF model clearly rejects the extended EH.⁹ Figure 1 shows that the model-implied risk premiums exhibit statistically significant time variation (see the 99% error bands), rejecting the null of constant risk premium. The risk premiums also display strong collinearity across maturities, indicating the presence of a dominant factor which is represented by the factor $l_{3,t}$. Figure 2 suggests that this factor is closely related to the benchmark factor of Cochrane and Piazzesi (2005), the CP factor, with a correlation of 67% between the two series. Finally, in line with the literature, risk premiums tend to be countercyclical. The 4-quarter expected excess return for 8- to 20-quarter bonds has a correlation of around -45% with the output gap.

Insert Figures 1 and 2

We assess the performance of the EMF model by examining the fit of the bond risk premiums. Table 2 presents in-sample and out-of-sample results for excess bond returns implied by Cochrane and Piazzesi (2005)'s method and the EMF model. The analysis is done for a 20-quarter bond and for 4- and 8-quarter holding periods. Panel A reports the adjusted R^2 for in-sample regressions of the realized excess return on the CP factor and the EMF model-implied risk premium. We find that the EMF model explains a substantial amount of the variation in realized excess returns. This finding is in line with Cochrane

rate refers to a rate at which banks want to borrow funds (bid side). Typically, the Eurodollar rate is about one basis point below the LIBOR rate. In the estimation, we assume there is a spread between these rates equal to a constant plus an idiosyncratic shock.

⁹The parameter estimates of the EMF model are presented in Tables 2 to 4 of the online Appendix to this paper.

and Piazzesi (2005) and Ludvigson and Ng (2009), who show that a limited number of factors can forecast a significant part of realized excess returns. For the 4-quarter horizon, the performance of our model and that of Cochrane and Piazzesi (2005) is comparable, predicting above 30% of the in-sample variation in the realized excess returns. For the 8-quarter horizon, the EMF factor explains almost 40% while the CP factor explains 21% of the variability in realized excess returns.

Panel B of Table 2 reports the out-of-sample results for the period 1996:Q1-2008:Q4. We compare the performance in terms of the mean square error (MSE) of the EMF model against the CP factor and a random walk (RW) model with drift (i.e. with constant risk premium or no predictability for excess returns). The EMF model has a slightly superior performance against the CP model for both forecasting horizons (4 and 8 quarters). Against the RW model, the EMF model has a slightly inferior performance for the 4-quarter horizon but a superior performance over 8 quarters.¹⁰ Therefore, despite the strong in-sample performance of the EMF model, its out-of-sample performance seems less robust.

Insert Table 2

Additionally, we check the unbiasedness of the estimated bond risk premiums. We regress the realized excess returns on the expected excess returns implied by the EMF model:

$$rx_{t,t+k}^{(n)} = \alpha + \beta E_t \left[rx_{t,t+k}^{(n)} \right] + \varepsilon_{t+k}, \quad n = 20 \text{ qtr}, \quad k = 4, 8 \text{ qtr}, \quad (11)$$

where $rx_{t,t+k}^{(n)}$ denotes the realized return in excess of the k -quarter risk-free rate of buying a n -quarter bond at time t and selling it after k quarters, and $E_t \left[rx_{t,t+k}^{(n)} \right]$ represents the model-implied risk premium. We test the joint hypothesis that $\alpha = 0$ and $\beta = 1$. Table 3 shows that the estimated risk premiums are unbiased: (i) all α coefficients are statistically insignificant while the β coefficients are not statistically different from one; and (ii) based on a standard F -test, we cannot reject the joint hypothesis for α and β .¹¹

Insert Table 3

We now assess the contribution of each type of shock to the dynamics of bond risk premiums making use of a variance decomposition. The EMF model implies that risk premiums are mainly driven by financial shocks, with a marginal contribution from macroeconomic shocks. Panel A of Table 4 illustrates this by means of a variance decomposition of the 4-quarter risk premiums of 8- and 20-quarter bonds.¹² The results highlight the importance of three types of shocks: (i) return-forecasting factor (i.e. risk premium) shocks are the dominant source of variation, explaining between 60% and 80% of the variation in risk

¹⁰For bonds with other maturities (8, 12, and 16 quarters), however, the EMF model has a performance which is equal or superior to both the CP and RW models. The results are available upon request.

¹¹This result also holds for bonds with maturities of 8, 12, and 16 quarters. The results are available upon request.

¹²The ordering of the variables is the same as the one in the state vector (Eq. (8)).

premiums; (ii) liquidity shocks explain between 12% and 20% of this variation; and (iii) for long horizons, monetary policy shocks account for approximately 15% of the variance decomposition.

Insert Table 4

3.2 Term premium

The rejection of the EH raises the question of the relative importance of the expectations and term premium components in the yield curve (and yield spread) dynamics. This is a relevant issue since yield curve changes might entail different macroeconomic interpretations depending on the source of variation (see Rudebusch et al. (2007); Ludvigson and Ng (2009)). In this section, we first decompose bond yields and analyze the macroeconomic and financial drivers of their components. We then study the predictive power of a popular yield curve indicator, the yield spread, and its expectations and term premium components for economic activity and inflation.

3.2.1 Decomposing the yield curve

Figure 3 illustrates the decomposition of the yield curve. The top panel shows the model-implied time series of the 40-quarter yield while the middle panel displays its expectations component. The bottom panel plots the term premium implied by the EMF model and compares it to the Kim and Wright (2005) measure (KW).¹³ Despite the significant differences in structure between the EMF and KW models,¹⁴ the term premiums derived from these models are remarkably similar. This result might be surprising given the findings of Rudebusch et al. (2007). They find that the behavior of the KW and the Bernanke et al. (2004) measures are remarkably similar while that of Cochrane and Piazzesi (2005) is harder to understand since it is well below the other measures and far too volatile. Our EMF model is able to filter a return-forecasting factor similar to the CP factor while generating a term premium measure similar to that of Kim and Wright (2005).

Insert Figure 3

The time variation in our term premium series is substantial, which indicates that the rejection of the EH documented above has significant economic implications. In particular, the one-to-one relation between yields and expected short rates (implying a constant, maturity-specific term premium) breaks down.

Panels B and C of Table 4 show the variance decomposition of the expectations and term premium components, respectively, of 4- and 40-quarter bonds. The expectations component of 4-quarter bonds is dominated by monetary policy shocks while of long-term

¹³The Federal Reserve Board provides data to generate the term premium from the Kim and Wright (2005) model.

¹⁴The Kim and Wright (2005) model is a standard latent factor model augmented with survey data, whereas the EMF model combines macroeconomic, yield curve, and survey data.

bonds is dominated by long-run inflation shocks. In line with the findings of Section 3.1, the term premium component is driven mainly by risk premium shocks. Liquidity and policy rate shocks have a smaller effect over all horizons while macroeconomic shocks are insignificant. To the extent that financial shocks carry different information than macroeconomic shocks, one may expect a difference in the information content of the expectation and term premium component. This follows as a direct consequence of the difference in relative importance of financial and macroeconomic shocks in, respectively, the term premium and expectations components. As a consequence, it may also blur the informational content of yield spreads which is the measure mostly used for macroeconomic predictions.

Since in the next section we focus on the predictive content of yield spreads for macroeconomic predictions, we illustrate in Figure 4 the decomposition of yield spreads into an expectations and a term premium component. The top panel of this figure shows the 40-quarter yield spread implied by the EMF model and the middle and bottom panels display its expectations and term premium components, respectively. As expected, this figure suggests that a significant part of the yield spread variation is due to the variation in the term premium.

Insert Figure 4

3.2.2 Macroeconomic information in the yield curve

We assess the information content of the EMF model-implied expectations ($Spr_t^{e,(n)}$) and term premium ($\chi_t^{(n)}$) components of yield spreads ($Spr_t^{(n)}$) in the predictive regressions of real economic activity and inflation, with $Spr_t^{(n)} = y_t^{(n)} - y_t^{(1)} = Spr_t^{e,(n)} + \chi_t^{(n)}$. We concentrate on two measures of economic activity: real GDP growth and the output gap. Our analysis of the GDP growth is closely related to Ang et al. (2006), Estrella and Mishkin (1997) and Rudebusch et al. (2007), while the prediction exercise for the output gap is relatively new. We also use two measures of inflation in our analysis. We forecast inflation taking into consideration the main results of Faust and Wright (2011), and predict forward inflation changes as in Estrella and Mishkin (1997) and Mishkin (1990).

Predicting economic activity For GDP growth, we estimate several predictive regressions, where the most extended version regresses the cumulative real GDP growth for the next k quarters on the yield spread components:

$$g_{t \rightarrow t+k} = \alpha + \beta^{EC} (Spr_t^{e,(n)} + \chi_t^{(n)}) + \beta^{TP} \chi_t^{(n)} + \gamma g_t + \delta y_t^{(1)} + \varepsilon_{t+k} \quad (12)$$

where $g_t \equiv g_{t-1 \rightarrow t}$ denotes GDP growth in the past quarter, expressed in yearly terms. In line with the literature, we use lagged GDP growth, g_t , and the short-term interest rate, $y_t^{(1)}$, as control variables. For output gap predictions, we use a similar specification:

$$\tilde{y}_{t+k} = \alpha + \beta^{EC} (Spr_t^{e,(n)} + \chi_t^{(n)}) + \beta^{TP} \chi_t^{(n)} + \gamma \tilde{y}_t + \delta y_t^{(1)} + \varepsilon_{t+k} \quad (13)$$

where \tilde{y}_{t+k} denotes the output gap at time $t+k$. For both regressions, we distinguish between four types of models. Model 1 is the standard representation based solely on the spread and, therefore, imposes that $\beta^{TP} = \gamma = \delta = 0$. Model 2 allows for different informational content from each spread component, i.e. it allows $\beta^{TP} \neq 0$. Note that, by construction, a statistical test for the relevance of the spread decomposition consists of testing the null of $\beta^{TP} = 0$. Model 3 extends model 1 (without the spread decomposition) by allowing for the two control variables. Model 4 is the most general case as in Eqs. (12) and (13). We estimate each model using 4-, 20-, or 40-quarter yield spreads and for a forecasting horizon (k) of 1, 4, and 8 quarters.

Table 5 summarizes the results for the GDP growth predictive regressions (Eq. (12)). The estimates for model 1 show a positive relation between spreads and future GDP growth which is statistically significant for all horizons. Yield spreads are, however, not sufficient statistics for GDP growth predictions. Adding control variables improves the performance of the predictive equations in almost all cases if the yield spread is used (model 3) and in all cases if the decomposed spread is used (model 4). Note however that the inclusion of control variables (model 3) does not drive out the yield spread as a predicting variable (unlike Ang et al. (2006)).

We now assess the impact of the yield spread decomposition to forecast GDP growth. Although a simple decomposition of the yield spread (model 2) improves forecasts of GDP growth, the increase in the adjusted R^2 is smaller than the one obtained with the use of control variables (model 3). Finally, comparing models 1 and 2 and models 3 and 4, we observe that although the decomposition of the yield spread into its components leads in most cases to an increase in the adjusted R^2 , in all cases we cannot reject the hypothesis that $\beta^{TP} = 0$. Therefore, surprisingly, the yield spread decomposition as implied by the EFM model improves only marginally (and not statistically significant) the prediction of GDP growth.¹⁵

Insert Table 5

The results in the literature regarding the importance of each yield spread component are contradictory. Our results are in line with Ang et al. (2006), who find that only the expectations component is relevant to forecast output growth. Hamilton and Kim (2002) find that both components are important, while Favero et al. (2005) attribute more importance to the term premium component.

Table 6 summarizes the results for the output gap regressions (Eq. (13)). The estimates for model 1 show that the yield spread alone has minor predictive power for the output gap. The results for model 2 indicate that a decomposition of yield spreads improves significantly their forecasting ability. The expectations component signals most of the time a statistically significant increase in the output gap. The results for model 3, however,

¹⁵Interestingly, Ang et al. (2006) recommend for prediction purposes the use of the longest maturity yield to measure the spread. In their case, this is the 20-quarter yield. Our longest yield has a maturity of 40 quarters but we find that in 9 out of 12 cases the best spread to be used in order to forecast GDP growth is the 20-quarter spread.

reveal that the inclusion of control variables have a greater impact on the forecasting ability for the output gap than the decomposition of the yield spread, although less significant for longer forecasting horizons (8 quarters). This is mostly due to the correlation structure in the output gap series, which is particularly strong for short lags. Also, once control variables are included, the yield spread is statistically significant in only four out of nine cases. Finally, the results for model 4 show, with one exception, that once control variables are included we cannot reject the hypothesis that $\beta^{TP} = 0$. As a consequence, comparing models 3 and 4 we conclude that the increase in the adjusted R^2 due to the decomposition of the yield spread is no longer significant. Hence, once we control for the current level of the output gap and the short-term interest rate, the yield spread decomposition does not seem to contribute to the prediction of the output gap.

Insert Table 6

We analyze now whether the predictive content of the yield spread and its components has changed over time. The analysis concentrates on the GDP growth. We use an expanding window starting in 1960:Q1 both to reestimate the EFM model and for the predictive regressions (Eq. (12)). Figure 5 shows the end date of the sample period used and the resulting adjusted R^2 . We observe a general decrease in the predictive power over time which seems stronger after 2002. The figure also shows that a simple yield spread decomposition (i.e. without control variables) has a higher forecasting ability for short-term horizons. The opposite happens if one allows for control variables, i.e. the yield spread decomposition becomes more important for long-horizon forecasts. This improvement is significant for the 8-quarter horizon although such gain has decreased over time.¹⁶

Insert Figure 5

Predicting inflation We investigate the contribution of the yield spread decomposition in forecasting inflation using two sets of predictive regressions. The first set is based on the work of Faust and Wright (2011), who analyze seventeen methods to forecast inflation. They find that for our measure of inflation (GDP deflator) the Federal Reserve’s Greenbook forecast outperforms most model-based forecasts and that the random walk-based model of Atkeson and Ohanian (2001), the RW-AO, does remarkably well in forecasting inflation. We therefore assess whether (i) the yield spread decomposition has predictive power to forecast inflation beyond the RW-AO method, and (ii) whether the forecasting power is robust to the inclusion of a set of control variables, including the Greenbook forecast. The second set of regressions is based on the work of Estrella and Mishkin (1997) and Mishkin (1990), who examine the information in the long-end of the term structure to forecast

¹⁶Figure 1 of the online Appendix shows the results for the output gap. The predictive power of the yield spread and its components has remained almost constant over time with a slight decrease at the end of the sample period. Also, in general, the inclusion of control variables has a higher impact on the adjusted R^2 than the decomposition of the yield spread.

future changes in forward inflation.

Our first set of regressions is based on the RW-AO model. This model predicts that the inflation k periods ahead is equal to the average of quarterly inflation over the past four quarters, $\bar{\pi}_{t-3,t} = \frac{1}{4} \sum_{j=0}^3 \pi_{t-j}$. Hence, we evaluate the forecasting power of the yield spread decomposition to predict the deviation of inflation k periods ahead from the forecast based on the RW-AO model at time t , $\bar{\pi}_{t-3,t}$:

$$\pi_{t+k} - \bar{\pi}_{t-3,t} = \alpha + \beta^{EC} (Spr_t^{e,(n)} + \chi_t^{(n)}) + \beta^{TP} \chi_t^{(n)} + \gamma(\pi_t - \bar{\pi}_{t-4,t-1}) + \delta y_t^{(1)} + \varepsilon_{t+k} \quad (14)$$

where π_{t+k} is the level of inflation between quarter $t+k-1$ and $t+k$, expressed in annual terms. The control variables are the deviation of current inflation from the average of quarterly inflation over the periods $t-4$ and $t-1$, $\pi_t - \bar{\pi}_{t-4,t-1}$, and the short-term interest rate, $y_t^{(1)}$. We predict inflation 1, 4 and 8 quarters ahead (k) using 4-, 20- and 40-quarter (n) yield spreads. The model versions are similar to those in Tables 5 and 6. Table 7 shows that yield spreads alone (model 1) are statistically significant only for a horizon of 8 quarters with minor predictive ability. Using decomposed spreads (model 2), we observe a significant increase in the adjusted R^2 for all forecasting horizons and spread maturities. We also reject the null of $\beta^{TP} = 0$, showing the significance of the spread decomposition. If we allow for control variables instead of decomposing the spread (model 3 versus model 1), we also observe a significant increase in the adjusted R^2 . However, a comparison between models 1 and 2 and models 1 and 3 shows that for horizons of one year and above the spread decomposition has a larger effect than the inclusion of control variables. Moreover, the results for model 4 show that even allowing for control variables the spread decomposition is still statistically significant for forecasting horizons of one year and above, and the increase in the adjusted R^2 is higher for longer forecasting horizons. Comparing the coefficients for the yield spread (β) and its components (β^{EC} and β^{TP}) in models 3 and 4, respectively, we observe that while in model 3 some of the coefficients on the spread are negative, once you allow for the spread decomposition, all coefficients on the expectations component have a positive sign. We conclude that the yield spread decomposition is crucial for forecasting inflation and becomes more important as the forecasting horizons increases.

Insert Table 7

Finally, we assess whether the observed forecasting power of the decomposed yield spread is robust to the inclusion of a subjective forecast as an extra control variable:

$$\pi_{t+k} - \bar{\pi}_{t-3,t} = \alpha + \theta Sur_t^k + \beta^{EC} (Spr_t^{e,(n)} + \chi_t^{(n)}) + \beta^{TP} \chi_t^{(n)} + \gamma(\pi_t - \bar{\pi}_{t-1,t-4}) + \delta y_t^{(1)} + \varepsilon_{t+k} \quad (15)$$

where Sur_t^k denotes the Greenbook forecast of inflation k quarters ahead. Table 8 shows the results for a regression with yield spreads (i.e. $\beta^{TP} = 0$, model 1) and decomposed yield spreads (model 2). We adopt a 4-quarter forecasting horizon (k) and use yield spreads

of 4, 20, and 40 quarters (n). The first column for each maturity in models 1 and 2 are equivalent to models 3 and 4 of Table 7, respectively. The results are not identical due to the difference in the sample period.

The results from Table 8 are mixed. The estimates from model 1 show that although the inclusion of the Greenbook forecast leads to a slight increase in the adjusted R^2 for all spread maturities, this variable is never statistically significant. This is not surprising since we are trying to forecast inflation above what is predicted by the RW-AO model, which according to Atkeson and Ohanian (2001) is able to forecast inflation remarkably well. Nevertheless, once we control for the Greenbook forecast (second column for each maturity), the yield spread decomposition (model 2) still leads to an increase in the adjusted R^2 for spreads of 20- and 40-quarters relative to the model without the spread decomposition (model 1). Although only for the 20-quarter spread the coefficient on β^{TP} is statistically significant. Therefore, the yield spread decomposition seems to add some explanatory power even after the inclusion of the Greenbook forecast.

Insert Table 8

Our second set of regressions is based on the work of Estrella and Mishkin (1997) and Mishkin (1990) who show that an increase in the yield spread is an indication of positive changes in future inflation. Forecasting inflation at longer horizons is crucial for policy-makers since it is known that monetary policy action has an effect on inflation with several lags. We therefore run the following predictive regression:

$$\pi_t^{(k)} - \pi_t^{(4)} = \alpha + \beta^{EC}(Spr_t^{e,(k)} + \chi_t^{(k)}) + \beta^{TP}\chi_t^{(k)} + \gamma\pi_t^{(-4)} + \delta y_t^{(1)} + \varepsilon_{t+k} \quad (16)$$

where $\pi_t^{(k)} - \pi_t^{(4)}$ is the difference between the future k -quarter inflation rate from time t to $t+k$ and the future 4-quarter inflation rate from t to $t+4$, all in annual terms. The control variables are the past inflation between $t-4$ quarters and t ($\pi_t^{(-4)}$), and the short-term interest rate. We consider forecasting horizons of 8, 12, 16 and 20 quarters. The results are presented in Table 9 and the model versions are similar to those in Tables 5, 6, and 7. The results for model 1 show that yield spreads significantly predict inflation changes. The use of decomposed spreads (model 2) leads to a higher increase in the R^2 's for horizons of 2 and 3 years, but the inclusion of control variables (model 3) has a higher impact for longer horizons (4 and 5 years). Finally, even with the inclusion of control variables, the use of decomposed spreads (model 4) leads to an increase in the adjusted R^2 , with spread components statistically significant in almost all cases. Interestingly, in both cases where we use decomposed spreads (models 2 and 4), we cannot reject that $\beta^{EC} = 1$, a hypothesis implied by the EH assuming a constant real interest rate over time (see also Mishkin (1990)). Our results, therefore, show that any interpretation of the yield spread variations in terms of long-run inflation expectation can be biased by the presence of

time-varying risk premiums.

Insert Table 9

One reason for the difference in the relevance of the spread decomposition in the regressions for economic activity and inflation is the fact that for the latter the coefficients β^{EC} and β^{TP} have consistently opposite signs and are in most cases statistically significant. This leads to significant differences in the informational content of the expectations (β^{EC}) and term premium ($\beta^{EC} + \beta^{TP}$) components with respect to future inflation, with the expectations component that has a positive association with future inflation (in line with the Fisher parity). These differences can obviously not be captured by the spread itself. Finally, we analyze the time evolution robustness of the predictive content of the yield spread and its components for inflation changes (Eq. (16)). Each plot in Figure 6 shows the adjusted R^2 over time for a certain predictive horizon and the corresponding yield spread. As in Figure 5, the EFM model is reestimated at every quarter using an expanding window starting in 1960:Q1. The dates in the figure show the end of the sample period used. The results show a slight decrease over time in the predictive power of the yield spread and its components. Nevertheless, we observe a striking improvement in the adjusted R^2 simply by decomposing the spread in its two components. This is especially the case for a 8-quarter horizon. For a 20-quarter horizon, once you allow for control variables the gain from spread decomposition is marginal.

Insert Figure 6

4 Conclusion

We use the EMF model of Dewachter and Iania (2011) to study the risk and term premiums in the U.S. bond market. This model extends standard MF models by including next to the standard macroeconomic factors a set of financial factors. The latter include liquidity and risk premium factors, which allow the model to capture in a better way the additional non-macroeconomic drivers of the yield curve.

The estimation results indicate that risk premiums in the U.S. market display significant time variation and strong collinearity across the maturity spectrum. The former is a clear indication that the expectation hypothesis fails. More importantly, a variance decomposition singles out the financial factors, especially risk premium shocks, as the main drivers behind bond risk premiums. This is in line with the recent literature indicating that macroeconomic factors cannot account for the time variation in risk premiums. The significant collinearity of risk premiums suggests that only a few factors drive the entire term structure of risk premiums. We find that one factor, closely related to the CP factor (Cochrane and Piazzesi (2005)), is responsible for most of the variation in risk premiums. We use the EMF model to decompose the yield spread into an expectations and a term premium component. This decomposition is used to forecast economic activity and infla-

tion. Although the decomposition does not seem important to forecast economic activity, it is crucial to forecast inflation for most forecasting horizons. Also, in general, the inclusion of control variables such as the short-term interest rate and lagged variables does not drive out the predictive power of the spread decomposition.

References

- Ang, A. and M. Piazzesi (2003). A no-arbitrage vector autoregression of term structure dynamics with macroeconomic and latent variables. *Journal of Monetary Economics* 50(4), 745–787.
- Ang, A., M. Piazzesi, and M. Wei (2006). What does the yield curve tell us about GDP growth? *Journal of Econometrics* 131(1-2), 359–403.
- Atkeson, A. and L. E. Ohanian (2001). Are Phillips curves useful for forecasting inflation? *Federal Reserve Bank of Minneapolis Quarterly Review* 25(1), 2–11.
- Bekaert, G., S. Cho, and A. Moreno (2010). New-Keynesian macroeconomics and the term structure. *Journal of Money, Credit and Banking* 42, 33–62.
- Bernanke, B. S., V. R. Reinhart, and B. P. Sack (2004). Monetary policy alternatives at the zero bound: an empirical assessment. *Brookings Papers on Economic Activity* (2), 1–78.
- Christensen, J. H. E., J. A. Lopez, and G. D. Rudebusch (2009). Do central bank liquidity facilities affect interbank lending rates? Working Paper Series 2009-13, Federal Reserve Bank of San Francisco.
- Cochrane, J. H. and M. Piazzesi (2005). Bond risk premia. *American Economic Review* 95(1), 138–160.
- Cochrane, J. H. and M. Piazzesi (2009). Decomposing the yield curve. *AFA 2010 Atlanta Meetings Paper*.
- De Graeve, F., M. Emiris, and R. Wouters (2009). A structural decomposition of the US yield curve. *Journal of Monetary Economics* 56(4), 545–559.
- Dewachter, H. and L. Iania (2011). An extended macro-finance model with financial factors. *Journal of Financial and Quantitative Analysis* 46, 1893–1916.
- Dewachter, H. and M. Lyrio (2008). *Learning, Macroeconomic Dynamics, and the Term Structure of Interest Rates*, pp. 191–245. University of Chicago Press.
- Duffee, G. R. (2002). Term premia and interest rate forecasts in affine models. *The Journal of Finance* 57(1), 405–443.
- Duffee, G. R. (2011). Information in (and not in) the term structure. *Review of Financial Studies* 24, 2895–2934.
- Estrella, A. (2005). Why does the yield curve predict output and inflation? *Economic Journal* 115(505), 722–744.
- Estrella, A. and G. A. Hardouvelis (1991). The term structure as a predictor of real economic activity. *Journal of Finance* 46(2), 555–76.
- Estrella, A. and F. S. Mishkin (1997). The predictive power of the term structure of interest rates in Europe and the United States: implications for the European Central Bank. *European Economic Review* 41(7), 1375–1401.
- Estrella, A. and F. S. Mishkin (1998). Predicting U.S. recessions: financial variables as leading indicators. *The Review of Economics and Statistics* 80(1), 45–61.

- Fama, E. F. (1984). The information in the term structure. *Journal of Financial Economics* 13, 509–528.
- Fama, E. F. (1990). Term-structure forecasts of interest rates, inflation, and real returns. *Journal of Monetary Economics* 25(1), 59–76.
- Faust, J. and J. H. Wright (2011). Forecasting inflation. Unpublished manuscript, Johns Hopkins University.
- Favero, C., I. Kaminska, and U. Söderström (2005). The predictive power of the yield spread: further evidence and a structural interpretation. CEPR Discussion Papers 4910.
- Gürkaynak, R. S., B. Sack, and J. H. Wright (2007). The U.S. treasury yield curve: 1961 to the present. *Journal of Monetary Economics* 54(8), 2291–2304.
- Hamilton, J. D. and D. H. Kim (2002). A reexamination of the predictability of economic activity using the yield spread. *Journal of Money, Credit and Banking* 34(2), 340–60.
- Hördahl, P., O. Tristani, and D. Vestin (2006). A joint econometric model of macroeconomic and term-structure dynamics. *Journal of Econometrics* 131(1-2), 405–444.
- Hördahl, P., O. Tristani, and D. Vestin (2008). The yield curve and macroeconomic dynamics. *Economic Journal* 118(533), 1937–1970.
- Jones, D. S. and V. V. Roley (1983). Rational expectations and the expectations model of the term structure: A test using weekly data. *Journal of Monetary Economics* 12, 453–465.
- Jorion, P. and F. Mishkin (1991). A multicountry comparison of term-structure forecasts at long horizons. *Journal of Financial Economics* 29(1), 59–80.
- Joslin, S., M. Pribsch, and K. J. Singleton (2009). Risk premium accounting in macrodynamic term structure models. Unpublished manuscript.
- Joslin, S., M. Pribsch, and K. J. Singleton (2010). Risk premiums in dynamic term structure models with unspanned macro risks. Unpublished manuscript.
- Kim, D. H. and J. H. Wright (2005). An arbitrage-free three-factor term structure model and the recent behavior of long-term yields and distant-horizon forward rates. Finance and Economics Discussion Series 2005-33, Board of Governors of the Federal Reserve System (U.S.).
- Kozicki, S. and P. A. Tinsley (2001). Shifting endpoints in the term structure of interest rates. *Journal of Monetary Economics* 47(3), 613–652.
- Liu, J., F. A. Longstaff, and R. E. Mandell (2006). The market price of credit risk: an empirical analysis of interest rate swap spreads. *Journal of Business* 79(5), 2337–2359.
- Ludvigson, S. C. and S. Ng (2009). Macro factors in bond risk premia. *Review of Financial Studies* 22(12), 5027–5067.
- Mankiw, N. G. and L. H. Summers (1984). Do long-term interest rates overreact to short-term interest rates? *Brookings Papers on Economic Activity* 1, 223–242.
- Mishkin, F. S. (1990). The information in the longer maturity term structure about future inflation. *The Quarterly Journal of Economics* 105(3), 815–828.
- Plosser, C. I. and G. K. Rouwenhorst (1994). International term structures and real economic growth. *Journal of Monetary Economics* 33(1), 133–155.
- Rudebusch, G. D., B. P. Sack, and E. T. Swanson (2007). Macroeconomic implications of changes in the term premium. *Federal Reserve Bank of St. Louis Review* 84(4), 241–269.

- Rudebusch, G. D. and T. Wu (2008). A macro-finance model of the term structure, monetary policy and the economy. *The Economic Journal* 118, 906–926.
- Shiller, R. J., J. Y. Campbell, and K. L. Schoenholtz (1983). Forward rates and future policy: interpreting the term structure of interest rates. *Brookings Papers on Economic Activity* 1, 173–217.
- Smets, F. and R. Wouters (2007). Shocks and frictions in US business cycles: a Bayesian DSGE approach. *American Economic Review* 97(3), 586–606.
- Stock, J. H. and M. W. Watson (1989). New indexes of coincident and leading economic indicators. *NBER Macroeconomics Annual 1989, Volume 4*, 351–409.
- Swanson, E. (2007). What we do and don't know about the term premium. *FRBSF Economic Letter* 21, 1–3.
- Vasicek, O. (1977). An equilibrium characterization of the term structure. *Journal of Financial Economics* 5, 177–188.

Table 1: SUMMARY STATISTICS

	Macro				Yields							Surveys		Spreads			
	Δy_t^{pot}	π_t	\tilde{y}_t	i_t^{cb}	$y_t^{(1)}$	$y_t^{(4)}$	$y_t^{(8)}$	$y_t^{(12)}$	$y_t^{(16)}$	$y_t^{(20)}$	$y_t^{(40)}$	π_t^{4q}	π_t^{40q}	ted_t	lib_t	cy_t	cr_t
μ (x 100)	3.2	3.6	-0.3	6.0	5.5	5.9	6.1	6.3	6.4	6.5	6.9	3.9	3.8	1.0	0.7	0.2	-0.3
σ (x 100)	0.6	2.4	2.3	3.3	2.8	2.8	2.8	2.7	2.6	2.6	2.4	2.0	1.5	1.1	0.5	0.2	0.3
kur	2.5	4.0	3.8	5.3	4.7	4.0	3.9	3.9	3.9	3.6	3.6	3.1	4.2	9.8	12.5	5.8	23.7
skw	0.2	1.2	-0.1	1.2	1.1	0.9	0.9	0.9	1.0	0.9	1.0	1.0	1.3	2.4	2.4	1.4	-4.1
$\rho^{(1)}$	1.0	0.9	0.9	0.9	0.9	0.9	0.9	1.0	1.0	1.0	1.0	1.0	1.0	0.7	0.7	0.5	0.6
$\rho^{(4)}$	0.9	0.8	0.6	0.7	0.8	0.8	0.8	0.8	0.9	0.9	0.9	0.9	1.0	0.5	0.5	0.5	0.3

Note: Δy_t^{pot} refers to the quarter-by-quarter growth rate of potential output expressed in annual terms, π_t to inflation, \tilde{y}_t to the output gap, i_t^{cb} to the central bank policy rate. $y_t^{(1)}, \dots, y_t^{(40)}$ to zero-coupon bond yields with maturities of 1 to 40 quarters, π_t^{4q} and π_t^{40q} to the survey data on the average 4- and 40-quarter inflation forecasts, ted_t to the TED spread, i.e. the difference between the LIBOR rate and the three-month government bond yield, lib_t to the LIBOR spread, i.e. $lib_t = i_t^{Libor} - i_t^{cb}$, cy_t to the convenience yield, and cr_t to the credit-risk component. μ denotes the mean, or the sample arithmetic average in percentage p.a., σ the standard deviation, kur the kurtosis, skw the skewness, and $\rho^{(1)}$ and $\rho^{(4)}$ the autocorrelation at lag 1 and 4, respectively.

Table 2: EXCESS RETURNS: IN-SAMPLE AND OUT-OF-SAMPLE ANALYSIS

Panel A: In-sample statistics**Panel B: Out-of-sample statistics**

Holding period	4 qtr	8 qtr		Holding period	4 qtr	8 qtr
maturity (n)	20 qtr	20 qtr		maturity (n)	20 qtr	20 qtr
CP (Adj. R^2)	30.50%	20.53%		EMF (RMSE)	5.08%	5.70%
EMF (Adj. R^2)	31.53%	39.44%	CP (RMSE)/EMF (RMSE)	1.03	1.03	
			RW (RMSE)/EMF (RMSE)	0.99	1.05	

Note: CP stands for the regression based on the Cochrane and Piazzesi (2005), RMSE refers to the root mean squared error while RW stands for the random walk model. For the EMF and the CP models, the forecasts are obtained (i) by estimating the models over the period 1960:Q1-1995:Q4 and (ii) by producing the model-implied forecasts of the excess returns for the period 1996:Q1-2008:Q4. Every quarter the information is updated and the models are reestimated.

Table 3: UNBIASEDNESS OF EXPECTED EXCESS RETURNS

Holding period	4 qtr	8 qtr
maturity (n)	20 qtr	20 qtr
α	0.000	0.000
	(0.006)	(0.004)
β	0.969	1.003
	(0.172)	(0.284)
p-value ($\alpha = 0, \beta = 1$)	0.984	0.394

Note: The Newey-West standard errors of the coefficients are in parentheses. The sample period goes from 1960:Q1 to 2008:Q4.

Table 4: VARIANCE DECOMPOSITION

Panel A: Bond risk premium

8-qtr bond (4-qtr holding period)							
Horizon	Sup. sh.	Dem. sh.	Pol. rate sh.	Liq. sh.	Risk pr. sh.	LR inf. sh.	Eq. real rate sh.
4 qtr	2.6%	1.1%	5.0%	12.3%	78.8%	0.2%	0.0%
40 qtr	2.5%	1.4%	17.2%	19.1%	59.6%	0.3%	0.0%
20-qtr bond (4-qtr holding period)							
Horizon	Sup. sh.	Dem. sh.	Pol. rate sh.	Liq. sh.	Risk pr. sh.	LR inf. sh.	Eq. real rate sh.
4 qtr	2.4%	1.0%	4.5%	13.1%	78.8%	0.1%	0.0%
40 qtr	2.4%	1.3%	16.5%	19.3%	60.3%	0.3%	0.0%

Panel B: Expectations component

Expected average short-term rate over 4 quarters							
Horizon	Sup. sh.	Dem. sh.	Pol. rate sh.	Liq. sh.	Risk pr. sh.	LR inf. sh.	Eq. real rate sh.
4 qtr	3.5%	2.7%	79.8%	12.8%	0.0%	1.0%	0.2%
40 qtr	2.5%	3.5%	44.5%	15.8%	0.0%	30.6%	3.1%
Expected average short-term rate over 40 quarters							
Horizon	Sup. sh.	Dem. sh.	Pol. rate sh.	Liq. sh.	Risk pr. sh.	LR inf. sh.	Eq. real rate sh.
4 qtr	1.7%	3.0%	18.6%	17.2%	0.0%	53.9%	5.6%
40 qtr	0.3%	0.6%	2.6%	4.5%	0.0%	83.8%	8.2%

Panel C: Term premium component

4-qtr term premium							
Horizon	Sup. sh.	Dem. sh.	Pol. rate sh.	Liq. sh.	Risk pr. sh.	LR inf. sh.	Eq. real rate sh.
4 qtr	1.8%	0.5%	2.5%	18.6%	76.6%	0.1%	0.0%
40 qtr	2.0%	1.0%	12.6%	21.2%	63.0%	0.2%	0.0%
40-qtr term premium							
Horizon	Sup. sh.	Dem. sh.	Pol. rate sh.	Liq. sh.	Risk pr. sh.	LR inf. sh.	Eq. real rate sh.
4 qtr	3.8%	0.9%	20.7%	8.8%	65.2%	0.6%	0.0%
40 qtr	4.1%	0.8%	23.4%	29.3%	41.4%	1.0%	0.0%

Note: This table reports the forecasting error variance decomposition (computed at the mode of the posterior distribution of the parameters) of the 4-quarter risk premiums of 8- and 20-quarter maturity bonds (Panel A), of the average expected 1-quarter interest rate over 4 quarters and 40 quarters (Panel B), and of the 4-quarter and 40-quarter term premium (Panel C). Sup. sh.: supply shocks; Dem. sh.: demand shocks; Pol. rate sh.: policy rate shocks; Liq. sh.: flight-to-quality and credit-crunch shocks; LR inf. sh.: long-run inflation shocks; and Eq. real rate sh.: equilibrium real rate shocks.

Table 5: FORECASTING GDP GROWTH

Model 1		$g_{t \rightarrow t+k} = \alpha + \beta Spr_t^{(n)} + \varepsilon_{t+k}$							
horizon (k)	1 qtr			4 qtr			8 qtr		
maturity (n)	4 qtr	20 qtr	40 qtr	4 qtr	20 qtr	40 qtr	4 qtr	20 qtr	40 qtr
α	0.026 (0.004)	0.023 (0.004)	0.023 (0.004)	0.025 (0.004)	0.023 (0.004)	0.023 (0.004)	0.026 (0.003)	0.024 (0.003)	0.025 (0.004)
β	1.362 (0.469)	0.838 (0.224)	0.593 (0.199)	1.462 (0.407)	0.840 (0.214)	0.583 (0.180)	1.090 (0.345)	0.675 (0.148)	0.455 (0.126)
Adj.- R^2	0.044	0.098	0.076	0.078	0.147	0.110	0.072	0.160	0.113
Model 2		$g_{t \rightarrow t+k} = \alpha + \beta^{EC} (Spr_t^{e,(n)} + \chi_t^{(n)}) + \beta^{TP} \chi_t^{(n)} + \varepsilon_{t+k}$							
horizon (k)	1 qtr			4 qtr			8 qtr		
maturity (n)	4 qtr	20 qtr	40 qtr	4 qtr	20 qtr	40 qtr	4 qtr	20 qtr	40 qtr
α	0.025 (0.004)	0.025 (0.004)	0.024 (0.004)	0.025 (0.004)	0.024 (0.004)	0.024 (0.004)	0.027 (0.003)	0.025 (0.003)	0.024 (0.004)
β^{EC}	2.544 (0.677)	1.043 (0.243)	0.782 (0.205)	2.027 (0.654)	0.925 (0.220)	0.700 (0.184)	1.129 (0.597)	0.633 (0.155)	0.489 (0.127)
β^{TP}	-1.198 (0.733)	-0.419 (0.255)	-0.323 (0.247)	-0.705 (0.663)	-0.245 (0.234)	-0.166 (0.228)	-0.083 (0.500)	-0.010 (0.176)	0.042 (0.172)
Adj.- R^2	0.097	0.132	0.118	0.108	0.159	0.143	0.093	0.153	0.142
Model 3		$g_{t \rightarrow t+k} = \alpha + \beta Spr_t^{(n)} + \gamma g_t + \delta y_t^{(1)} + \varepsilon_{t+k}$							
horizon (k)	1 qtr			4 qtr			8 qtr		
maturity (n)	4 qtr	20 qtr	40 qtr	4 qtr	20 qtr	40 qtr	4 qtr	20 qtr	40 qtr
α	0.027 (0.009)	0.023 (0.010)	0.023 (0.010)	0.029 (0.009)	0.025 (0.010)	0.025 (0.011)	0.031 (0.007)	0.026 (0.008)	0.026 (0.010)
β	1.158 (0.417)	0.601 (0.219)	0.389 (0.193)	1.290 (0.393)	0.670 (0.240)	0.434 (0.205)	0.992 (0.343)	0.622 (0.206)	0.410 (0.187)
γ	0.269 (0.084)	0.252 (0.083)	0.260 (0.084)	0.169 (0.069)	0.150 (0.068)	0.159 (0.070)	0.047 (0.051)	0.029 (0.050)	0.038 (0.052)
δ	-0.165 (0.103)	-0.101 (0.113)	-0.095 (0.122)	-0.159 (0.100)	-0.088 (0.115)	-0.081 (0.128)	-0.107 (0.085)	-0.036 (0.097)	-0.028 (0.112)
Adj.- R^2	0.184	0.194	0.175	0.182	0.199	0.165	0.103	0.157	0.111
Model 4		$g_{t \rightarrow t+k} = \alpha + \beta^{EC} (Spr_t^{e,(n)} + \chi_t^{(n)}) + \beta^{TP} \chi_t^{(n)} + \gamma g_t + \delta y_t^{(1)} + \varepsilon_{t+k}$							
horizon (k)	1 qtr			4 qtr			8 qtr		
maturity (n)	4 qtr	20 qtr	40 qtr	4 qtr	20 qtr	40 qtr	4 qtr	20 qtr	40 qtr
α	0.033 (0.009)	0.020 (0.010)	0.018 (0.010)	0.040 (0.010)	0.029 (0.012)	0.026 (0.012)	0.043 (0.009)	0.035 (0.012)	0.032 (0.013)
β^{EC}	0.671 (0.898)	0.761 (0.324)	0.615 (0.273)	0.023 (0.973)	0.501 (0.386)	0.412 (0.319)	-0.439 (0.971)	0.238 (0.422)	0.217 (0.353)
β^{TP}	0.536 (0.866)	-0.202 (0.311)	-0.195 (0.280)	1.258 (0.901)	0.136 (0.359)	0.107 (0.321)	1.531 (0.822)	0.371 (0.370)	0.321 (0.336)
γ	0.248 (0.082)	0.236 (0.087)	0.241 (0.087)	0.156 (0.064)	0.149 (0.070)	0.152 (0.071)	0.043 (0.041)	0.040 (0.046)	0.040 (0.048)
δ	-0.262 (0.130)	-0.039 (0.140)	-0.005 (0.144)	-0.344 (0.138)	-0.159 (0.170)	-0.124 (0.176)	-0.316 (0.114)	-0.197 (0.175)	-0.162 (0.186)
Adj.- R^2	0.201	0.197	0.188	0.221	0.199	0.183	0.193	0.172	0.153

Note: The standard errors of the coefficients are in parentheses. We estimate the model over the period 1960:Q1-2008:Q4.

Table 6: FORECASTING OUTPUT GAP

Model 1		$\tilde{y}_{t+k} = \alpha + \beta Spr_t^{(n)} + \varepsilon_{t+k}$							
horizon (k)	1 qtr			4 qtr			8 qtr		
maturity (n)	4 qtr	20 qtr	40 qtr	4 qtr	20 qtr	40 qtr	4 qtr	20 qtr	40 qtr
α	-0.002 (0.003)	0.002 (0.005)	0.002 (0.005)	-0.007 (0.004)	-0.006 (0.005)	-0.006 (0.006)	-0.011 (0.006)	-0.012 (0.006)	-0.012 (0.006)
β	-0.309 (0.546)	-0.543 (0.271)	-0.394 (0.197)	0.673 (0.587)	0.111 (0.264)	0.078 (0.218)	1.256 (0.650)	0.650 (0.278)	0.467 (0.227)
Adj.- R^2	-0.001	0.063	0.052	0.011	-0.003	-0.003	0.045	0.070	0.056
Model 2		$\tilde{y}_{t+k} = \alpha + \beta^{EC} (Spr_t^{e,(n)} + \chi_t^{(n)}) + \beta^{TP} \chi_t^{(n)} + \varepsilon_{t+k}$							
horizon (k)	1 qtr			4 qtr			8 qtr		
maturity (n)	4 qtr	20 qtr	40 qtr	4 qtr	20 qtr	40 qtr	4 qtr	20 qtr	40 qtr
α	-0.002 (0.003)	0.004 (0.004)	0.006 (0.004)	-0.007 (0.004)	-0.003 (0.004)	-0.001 (0.005)	-0.010 (0.005)	-0.010 (0.005)	-0.010 (0.006)
β^{EC}	2.215 (0.555)	0.064 (0.198)	-0.035 (0.173)	3.020 (0.572)	0.650 (0.220)	0.432 (0.185)	2.814 (0.776)	0.952 (0.221)	0.708 (0.182)
β^{TP}	-2.589 (0.633)	-0.852 (0.253)	-0.799 (0.256)	-2.546 (0.578)	-0.852 (0.244)	-0.754 (0.248)	-1.766 (0.519)	-0.559 (0.177)	-0.440 (0.174)
Adj.- R^2	0.251	0.252	0.242	0.222	0.185	0.162	0.137	0.143	0.126
Model 3		$\tilde{y}_{t+k} = \alpha + \beta Spr_t^{(n)} + \gamma \tilde{y}_t + \delta y_t^{(1)} + \varepsilon_{t+k}$							
horizon (k)	1 qtr			4 qtr			8 qtr		
maturity (n)	4 qtr	20 qtr	40 qtr	4 qtr	20 qtr	40 qtr	4 qtr	20 qtr	40 qtr
α	0.002 (0.002)	-0.000 (0.002)	-0.000 (0.003)	0.006 (0.007)	0.002 (0.009)	0.003 (0.010)	0.007 (0.009)	0.001 (0.012)	0.004 (0.014)
β	0.227 (0.123)	0.180 (0.056)	0.133 (0.052)	0.859 (0.352)	0.465 (0.241)	0.265 (0.187)	1.095 (0.485)	0.606 (0.350)	0.324 (0.308)
γ	0.934 (0.032)	0.967 (0.032)	0.964 (0.033)	0.578 (0.092)	0.656 (0.105)	0.624 (0.099)	0.122 (0.130)	0.225 (0.156)	0.178 (0.154)
δ	-0.064 (0.031)	-0.036 (0.032)	-0.031 (0.035)	-0.220 (0.094)	-0.156 (0.111)	-0.166 (0.120)	-0.297 (0.095)	-0.213 (0.134)	-0.232 (0.155)
Adj.- R^2	0.871	0.874	0.872	0.401	0.402	0.387	0.163	0.168	0.142
Model 4		$\tilde{y}_{t+k} = \alpha + \beta^{EC} (Spr_t^{e,(n)} + \chi_t^{(n)}) + \beta^{TP} \chi_t^{(n)} + \gamma \tilde{y}_t + \delta y_t^{(1)} + \varepsilon_{t+k}$							
horizon (k)	1 qtr			4 qtr			8 qtr		
maturity (n)	4 qtr	20 qtr	40 qtr	4 qtr	20 qtr	40 qtr	4 qtr	20 qtr	40 qtr
α	-0.000 (0.003)	-0.005 (0.003)	-0.005 (0.003)	0.006 (0.009)	-0.003 (0.011)	-0.003 (0.011)	0.010 (0.014)	0.002 (0.018)	0.002 (0.019)
β^{EC}	0.658 (0.267)	0.374 (0.084)	0.301 (0.075)	1.060 (0.803)	0.668 (0.317)	0.494 (0.269)	0.878 (1.517)	0.567 (0.598)	0.397 (0.507)
β^{TP}	-0.342 (0.288)	-0.229 (0.081)	-0.190 (0.074)	-0.092 (0.709)	-0.256 (0.224)	-0.183 (0.201)	0.386 (1.223)	0.040 (0.467)	0.113 (0.408)
γ	0.918 (0.037)	0.943 (0.033)	0.955 (0.033)	0.584 (0.094)	0.623 (0.103)	0.631 (0.106)	0.163 (0.148)	0.220 (0.145)	0.223 (0.148)
δ	-0.031 (0.044)	0.045 (0.041)	0.052 (0.043)	-0.230 (0.131)	-0.072 (0.146)	-0.071 (0.154)	-0.366 (0.187)	-0.240 (0.258)	-0.245 (0.274)
Adj.- R^2	0.877	0.880	0.878	0.420	0.413	0.402	0.191	0.175	0.163

Note: The standard errors of the coefficients are in parentheses. We estimate the model over the period 1960:Q1-2008:Q4.

Table 7: FORECASTING INFLATION

Model 1		$\pi_{t+k} - \bar{\pi}_{t-3,t} = \alpha + \beta Spr_t^{(n)} + \varepsilon_{t+k}$								
horizon (k)	1 qtr			4 qtr			8 qtr			
maturity (n)	4 qtr	20 qtr	40 qtr	4 qtr	20 qtr	40 qtr	4 qtr	20 qtr	40 qtr	
α	0.000	0.001	0.001	-0.001	0.000	-0.000	-0.005	-0.005	-0.006	
	(0.002)	(0.002)	(0.002)	(0.002)	(0.003)	(0.003)	(0.003)	(0.003)	(0.003)	
β	0.042	-0.086	-0.060	0.195	-0.021	0.015	1.285	0.514	0.420	
	(0.251)	(0.096)	(0.074)	(0.408)	(0.157)	(0.120)	(0.544)	(0.180)	(0.137)	
Adj.- R^2	-0.005	0.001	-0.000	-0.002	-0.005	-0.005	0.078	0.069	0.073	
Model 2		$\pi_{t+k} - \bar{\pi}_{t-3,t} = \alpha + \beta^{EC} (Spr_t^{e,(n)} + \chi_t^{(n)}) + \beta^{TP} \chi_t^{(n)} + \varepsilon_{t+k}$								
horizon (k)	1 qtr			4 qtr			8 qtr			
maturity (n)	4 qtr	20 qtr	40 qtr	4 qtr	20 qtr	40 qtr	4 qtr	20 qtr	40 qtr	
α	0.001	0.002	0.003	0.001	0.003	0.004	-0.002	-0.001	0.000	
	(0.001)	(0.001)	(0.001)	(0.002)	(0.002)	(0.002)	(0.002)	(0.002)	(0.002)	
β^{EC}	0.535	0.038	0.022	1.514	0.289	0.207	3.286	0.951	0.708	
	(0.262)	(0.089)	(0.067)	(0.385)	(0.139)	(0.106)	(0.468)	(0.138)	(0.107)	
β^{TP}	-0.777	-0.272	-0.261	-1.701	-0.594	-0.547	-2.749	-0.941	-0.824	
	(0.191)	(0.066)	(0.064)	(0.268)	(0.089)	(0.086)	(0.312)	(0.104)	(0.098)	
Adj.- R^2	0.089	0.089	0.084	0.204	0.193	0.180	0.369	0.366	0.339	
Model 3		$\pi_{t+k} - \bar{\pi}_{t-3,t} = \alpha + \beta Spr_t^{(n)} + \gamma(\pi_t - \bar{\pi}_{t-4,t-1}) + \delta y_t^{(1)} + \varepsilon_{t+k}$								
horizon (k)	1 qtr			4 qtr			8 qtr			
maturity (n)	4 qtr	20 qtr	40 qtr	4 qtr	20 qtr	40 qtr	4 qtr	20 qtr	40 qtr	
α	0.003	0.005	0.006	0.008	0.011	0.013	0.014	0.016	0.017	
	(0.002)	(0.002)	(0.002)	(0.003)	(0.003)	(0.003)	(0.003)	(0.004)	(0.004)	
β	0.043	-0.096	-0.107	0.127	-0.126	-0.140	1.044	0.226	0.091	
	(0.193)	(0.075)	(0.061)	(0.316)	(0.117)	(0.087)	(0.382)	(0.130)	(0.105)	
γ	0.350	0.328	0.322	0.458	0.427	0.419	0.212	0.233	0.207	
	(0.083)	(0.084)	(0.083)	(0.171)	(0.168)	(0.168)	(0.169)	(0.167)	(0.166)	
δ	-0.053	-0.070	-0.082	-0.155	-0.179	-0.195	-0.334	-0.320	-0.334	
	(0.028)	(0.029)	(0.030)	(0.050)	(0.048)	(0.049)	(0.048)	(0.055)	(0.059)	
Adj.- R^2	0.136	0.142	0.147	0.185	0.190	0.194	0.305	0.262	0.253	
Model 4		$\pi_{t+k} - \bar{\pi}_{t-3,t} = \alpha + \beta^{EC} (Spr_t^{e,(n)} + \chi_t^{(n)}) + \beta^{TP} \chi_t^{(n)} + \gamma(\pi_t - \bar{\pi}_{t-4,t-1}) + \delta y_t^{(1)} + \varepsilon_{t+k}$								
horizon (k)	1 qtr			4 qtr			8 qtr			
maturity (n)	4 qtr	20 qtr	40 qtr	4 qtr	20 qtr	40 qtr	4 qtr	20 qtr	40 qtr	
α	0.001	0.001	0.002	0.000	-0.001	0.002	0.002	-0.004	-0.001	
	(0.003)	(0.003)	(0.003)	(0.004)	(0.005)	(0.005)	(0.005)	(0.006)	(0.007)	
β^{EC}	0.340	0.057	0.018	1.312	0.378	0.237	2.928	1.053	0.741	
	(0.368)	(0.120)	(0.098)	(0.607)	(0.184)	(0.150)	(0.851)	(0.260)	(0.206)	
β^{TP}	-0.536	-0.209	-0.172	-1.453	-0.586	-0.476	-2.379	-1.019	-0.829	
	(0.361)	(0.130)	(0.123)	(0.597)	(0.196)	(0.186)	(0.760)	(0.268)	(0.246)	
γ	0.285	0.294	0.299	0.291	0.346	0.362	-0.060	0.080	0.105	
	(0.102)	(0.095)	(0.094)	(0.204)	(0.187)	(0.185)	(0.226)	(0.193)	(0.190)	
δ	0.008	0.007	-0.008	0.007	0.046	0.013	-0.088	0.055	0.020	
	(0.054)	(0.057)	(0.060)	(0.094)	(0.092)	(0.096)	(0.105)	(0.124)	(0.130)	
Adj.- R^2	0.152	0.158	0.155	0.233	0.241	0.230	0.370	0.363	0.335	

Note: The standard errors of the coefficients are in parentheses. We estimate the model over the period 1960:Q1-2008:Q4.

Table 8: FORECASTING INFLATION: THE IMPACT OF GREENBOOK FORECASTS

Model 1		$\pi_{t+k} - \bar{\pi}_{t-3,t} = \alpha + \theta Sur_t^k + \beta Spr_t^{(n)} + \gamma(\pi_t - \bar{\pi}_{t-4,t-1}) + \delta y_t^{(1)} + \varepsilon_{t+k}$					
horizon (k)	4 qtr						
maturity (n)	4 qtr		20 qtr		40 qtr		
α	0.009 (0.003)	0.008 (0.003)	0.010 (0.004)	0.010 (0.004)	0.010 (0.005)	0.009 (0.005)	
θ		0.137 (0.082)		0.138 (0.081)		0.137 (0.081)	
β	0.022 (0.230)	0.013 (0.228)	-0.045 (0.117)	-0.048 (0.116)	-0.029 (0.105)	-0.030 (0.105)	
γ	0.573 (0.135)	0.575 (0.134)	0.562 (0.138)	0.564 (0.137)	0.565 (0.138)	0.567 (0.137)	
δ	-0.189 (0.038)	-0.263 (0.058)	-0.199 (0.045)	-0.274 (0.063)	-0.199 (0.051)	-0.274 (0.067)	
Adj- R^2	0.269	0.279	0.270	0.280	0.269	0.280	
Model 2		$\pi_{t+k} - \bar{\pi}_{t-3,t} = \alpha + \theta Sur_t^k + \beta^{EC} (Spr_t^{e,(n)} + \chi_t^{(n)}) + \beta^{TP} \chi_t^{(n)} + \gamma(\pi_t - \bar{\pi}_{t-4,t-1}) + \delta y_t^{(1)} + \varepsilon_{t+k}$					
horizon (k)	4 qtr						
maturity (n)	4 qtr		20 qtr		40 qtr		
α	0.007 (0.004)	0.009 (0.005)	0.001 (0.005)	-0.001 (0.006)	0.002 (0.005)	0.000 (0.007)	
θ		0.137 (0.122)		-0.082 (0.136)		-0.071 (0.146)	
β^{EC}	0.288 (0.473)	-0.204 (0.645)	0.301 (0.177)	0.408 (0.252)	0.222 (0.149)	0.303 (0.224)	
β^{TP}	-0.485 (0.439)	0.054 (0.651)	-0.409 (0.163)	-0.541 (0.274)	-0.342 (0.147)	-0.450 (0.266)	
γ	0.510 (0.144)	0.577 (0.156)	0.506 (0.136)	0.486 (0.140)	0.521 (0.136)	0.507 (0.140)	
δ	-0.132 (0.064)	-0.270 (0.139)	-0.036 (0.078)	0.060 (0.177)	-0.048 (0.081)	0.037 (0.195)	
Adj- R^2	0.276	0.277	0.301	0.297	0.296	0.291	

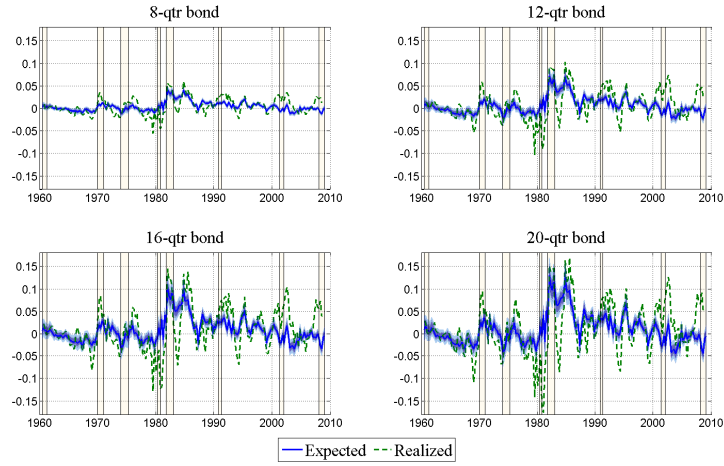
Note: The standard errors of the coefficients are in parentheses. We estimate the model over the period 1974:Q2-2005:Q4.

Table 9: FORECASTING FORWARD INFLATION CHANGES

Model 1		$\pi_t^{(k)} - \pi_t^{(4)} = \alpha + \beta Spr_t^{(k)} + \varepsilon_{t+k}$			
k	8 qtr	12 qtr	16 qtr	20 qtr	
α	-0.001 (0.001)	-0.002 (0.002)	-0.003 (0.002)	-0.003 (0.003)	
β	0.419 (0.203)	0.655 (0.208)	0.622 (0.215)	0.516 (0.236)	
Adj.- R^2	0.063	0.161	0.155	0.113	
Model 2		$\pi_t^{(k)} - \pi_t^{(4)} = \alpha + \beta^{EC}(Spr_t^{e,(k)} + \chi_t^{(k)}) + \beta^{TP}\chi_t^{(k)} + \varepsilon_{t+k}$			
k	8 qtr	12 qtr	16 qtr	20 qtr	
α	-0.001 (0.001)	-0.001 (0.001)	-0.002 (0.002)	-0.001 (0.003)	
β^{EC}	1.045 (0.239)	1.022 (0.228)	0.895 (0.229)	0.727 (0.249)	
β^{TP}	-0.718 (0.157)	-0.693 (0.144)	-0.621 (0.132)	-0.572 (0.144)	
Adj.- R^2	0.302	0.343	0.298	0.233	
Model 3		$\pi_t^{(k)} - \pi_t^{(4)} = \alpha + \beta_t Spr_t^{(k)} + \gamma \pi_t^{(-4)} + \delta y_t^{(1)} + \varepsilon_{t+k}$			
k	8 qtr	12 qtr	16 qtr	20 qtr	
α	0.004 (0.002)	0.007 (0.003)	0.010 (0.003)	0.015 (0.004)	
β	0.253 (0.167)	0.353 (0.183)	0.246 (0.183)	0.054 (0.179)	
γ	-0.012 (0.056)	-0.044 (0.076)	-0.102 (0.084)	-0.170 (0.087)	
δ	-0.075 (0.027)	-0.116 (0.039)	-0.135 (0.047)	-0.153 (0.053)	
Adj.- R^2	0.193	0.300	0.325	0.347	
Model 4		$\pi_t^{(k)} - \pi_t^{(4)} = \alpha + \beta^{EC}(Spr_t^{e,(k)} + \chi_t^{(k)}) + \beta^{TP}\chi_t^{(k)} + \gamma \pi_t^{(-4)} + \delta y_t^{(1)} + \varepsilon_{t+k}$			
k	8 qtr	12 qtr	16 qtr	20 qtr	
α	-0.005 (0.002)	-0.005 (0.003)	-0.001 (0.005)	0.006 (0.007)	
β^{EC}	1.707 (0.371)	1.450 (0.289)	1.071 (0.307)	0.603 (0.329)	
β^{TP}	-1.713 (0.384)	-1.516 (0.311)	-1.233 (0.363)	-0.904 (0.412)	
γ	-0.137 (0.051)	-0.225 (0.062)	-0.280 (0.078)	-0.318 (0.090)	
δ	0.172 (0.057)	0.232 (0.077)	0.212 (0.115)	0.128 (0.148)	
Adj.- R^2	0.388	0.440	0.412	0.394	

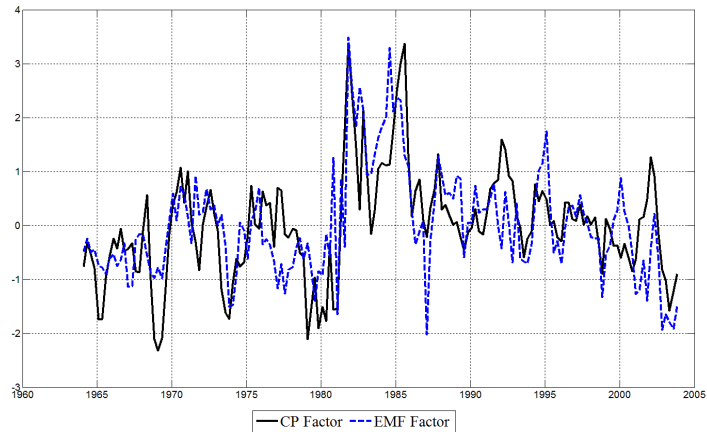
Note: The standard errors of the coefficients are in parentheses. We estimate the model over the period 1960:Q1-2008:Q4.

Figure 1: EXCESS RETURN: EXPECTED VS. REALIZED



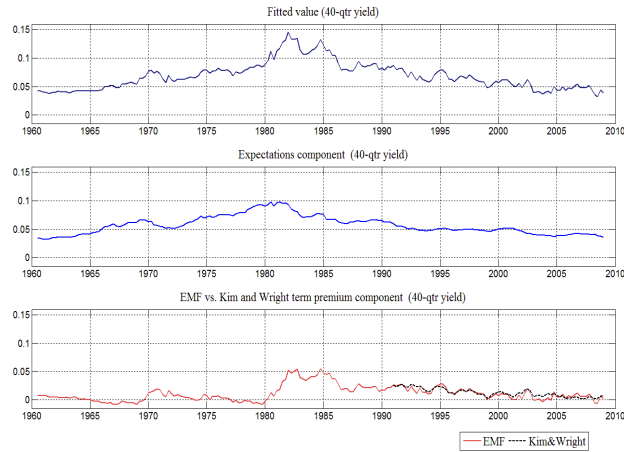
Note: This figure compares the EMF model-implied expected excess return (risk premium, continuous line) with the realized excess return (dashed line). The holding period is 4 quarters for bonds with maturities of 8, 12, 16 and 20 quarters.

Figure 2: RETURN-FORECASTING FACTOR: CP VS. EMF FACTOR



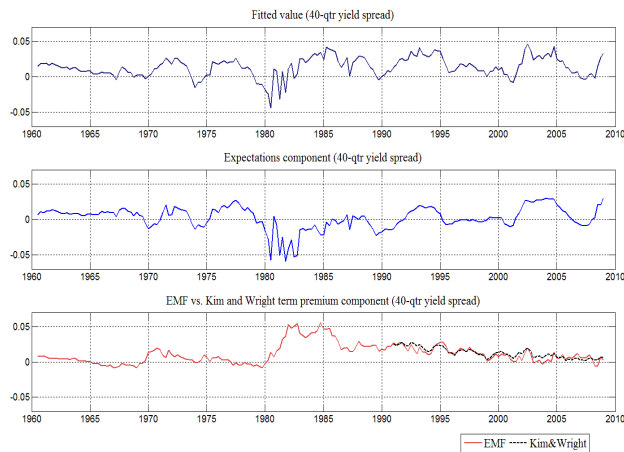
Note: This figure compares the Cochrane and Piazzesi (2005) factor (CP) with the EMF risk premium factor. Since the original CP factor is computed using monthly data and we work with quarterly frequencies, we compute the CP factor on a monthly basis and for each quarter we take the average of the monthly series. The correlation between our factor and the CP factor is 0.67.

Figure 3: TEN-YEAR YIELD: FITTED VALUE, EXPECTATIONS COMPONENT AND TERM PREMIUM COMPONENT



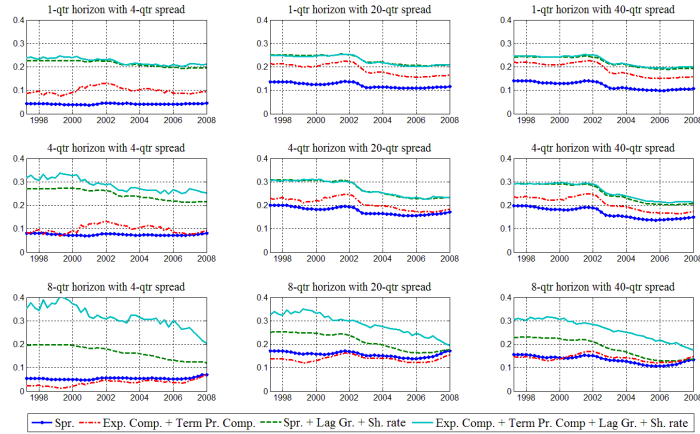
Note: The top panel of this figure plots the 40-quarter fitted yield. The middle panel depicts the EMF model-implied expected average 1-quarter yield over a period of 40 quarters. The bottom panel compares the EMF model-implied term premium for the 40-quarter bond (continuous line) with the term premium of Kim and Wright (2005) (dashed line).

Figure 4: TEN-YEAR SPREAD: FITTED VALUE, EXPECTATIONS COMPONENT AND TERM PREMIUM COMPONENT



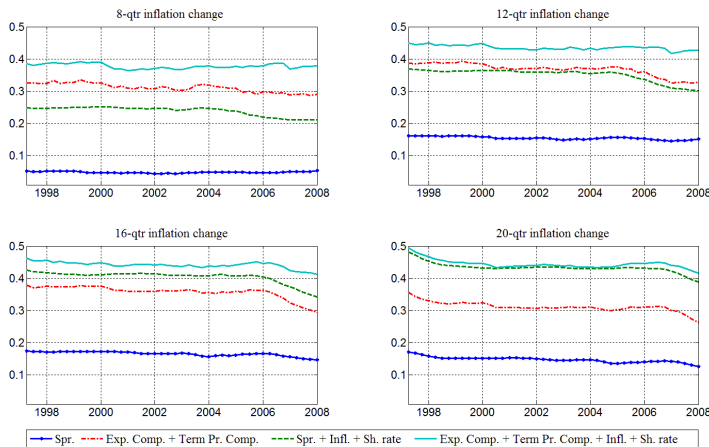
Note: The top panel of this figure plots the fitted spread of the 40-quarter yield less the 1-quarter yield. The middle panel depicts the EMF model-implied expected average 1-quarter yield over a period of 40 quarters minus the 1-quarter yield. The bottom panel compares the EMF model-implied term premium for the 40-quarter bond (continuous line) with the term premium of Kim and Wright (2005) (dashed line).

Figure 5: FORECASTING GDP GROWTH, EXPANDING WINDOW (R-SQUARED)



Note: Each plot of this figure shows the adjusted R^2 over time for a certain predictive horizon using a certain yield spread. The rows of panels define the predictive horizon (1, 4, and 8 quarters) and the columns of panels the maturity of the yield spread used in the regression (4, 20, and 40 quarters). The date on the horizontal axis determines the end date of the sample period. The first point in each graph indicates the adjusted R^2 for the period 1960:Q1-1995:Q4. The EFM model is reestimated at every quarter using an expanding window.

Figure 6: FORECASTING INFLATION CHANGES, EXPANDING WINDOW (R-SQUARED)



Note: Each plot of this figure shows the adjusted R^2 over time for a certain predictive horizon and the corresponding yield spread (8, 12, 16 and 20 quarters). The date on the horizontal axis determines the end date of the sample period. The first point in each graph indicates the adjusted R^2 for the period 1960:Q1-1995:Q4. The EFM model is reestimated at every quarter using an expanding window.

NATIONAL BANK OF BELGIUM - WORKING PAPERS SERIES

The Working Papers are available on the website of the Bank: <http://www.nbb.be>.

195. "Trade crisis? What trade crisis?", by K. Behrens, G. Corcos and G. Mion, *Research series*, September 2010.
196. "Trade and the global recession", by J. Eaton, S. Kortum, B. Neiman and J. Romalis, *Research series*, October 2010.
197. "Internationalization strategy and performance of small and medium sized enterprises", by J. Onkelinx and L. Sleuwaegen, *Research series*, October 2010.
198. "The internationalization process of firms: From exports to FDI?", by P. Conconi, A. Sapir and M. Zanardi, *Research series*, October 2010.
199. "Intermediaries in international trade: Direct versus indirect modes of export", by A. B. Bernard, M. Grazzi and C. Tomasi, *Research series*, October 2010.
200. "Trade in services: IT and task content", by A. Ariu and G. Mion, *Research series*, October 2010.
201. "The productivity and export spillovers of the internationalisation behaviour of Belgian firms", by M. Dumont, B. Merlevede, C. Piette and G. Rayp, *Research series*, October 2010.
202. "Market size, competition, and the product mix of exporters", by T. Mayer, M. J. Melitz and G. I. P. Ottaviano, *Research series*, October 2010.
203. "Multi-product exporters, carry-along trade and the margins of trade", by A. B. Bernard, I. Van Beveren and H. Vandenbussche, *Research series*, October 2010.
204. "Can Belgian firms cope with the Chinese dragon and the Asian tigers? The export performance of multi-product firms on foreign markets" by F. Abraham and J. Van Hove, *Research series*, October 2010.
205. "Immigration, offshoring and American jobs", by G. I. P. Ottaviano, G. Peri and G. C. Wright, *Research series*, October 2010.
206. "The effects of internationalisation on domestic labour demand by skills: Firm-level evidence for Belgium", by L. Cuyvers, E. Dhyne, and R. Soeng, *Research series*, October 2010.
207. "Labour demand adjustment: Does foreign ownership matter?", by E. Dhyne, C. Fuss and C. Mathieu, *Research series*, October 2010.
208. "The Taylor principle and (in-)determinacy in a New Keynesian model with hiring frictions and skill loss", by A. Rannenberg, *Research series*, November 2010.
209. "Wage and employment effects of a wage norm: The Polish transition experience" by A. de Crombrughe and G. de Walque, *Research series*, February 2011.
210. "Estimating monetary policy reaction functions: A discrete choice approach" by J. Boeckx, *Research series*, February 2011.
211. "Firm entry, inflation and the monetary transmission mechanism" by V. Lewis and C. Poilly, *Research series*, February 2011.
212. "The link between mobile telephony arrears and credit arrears" by H. De Doncker, *Document series*, March 2011.
213. "Development of a financial health indicator based on companies' annual accounts", by D. Vivet, *Document series*, April 2011.
214. "Wage structure effects of international trade: Evidence from a small open economy", by Ph. Du Caju, F. Rycx and I. Tojerow, *Research series*, April 2011.
215. "Economic importance of the Belgian ports: Flemish maritime ports, Liège port complex and the port of Brussels - Report 2009", by C. Mathys, *Document series*, June 2011.
216. "Verti-zontal differentiation in monopolistic competition", by F. Di Comite, J.-F. Thisse and H. Vandenbussche, *Research series*, October 2011.
217. "The evolution of Alexandre Lamfalussy's thought on the international and European monetary system (1961-1993)" by I. Maes, *Research series*, November 2011.
218. "Economic importance of air transport and airport activities in Belgium – Report 2009", by X. Deville and S. Vennix, *Document series*, December 2011.
219. "Comparative advantage, multi-product firms and trade liberalisation: An empirical test", by C. Fuss and L. Zhu, *Research series*, January 2012.
220. "Institutions and export dynamics", by L. Araujo, G. Mion and E. Ornelas, *Research series*, February 2012.
221. "Implementation of EU legislation on rail liberalisation in Belgium, France, Germany and the Netherlands", by X. Deville and F. Verduyn, *Document series*, March 2012.
222. "Tommaso Padoa-Schioppa and the origins of the euro", by I. Maes, *Document series*, March 2012.
223. "(Not so) easy come, (still) easy go? Footloose multinationals revisited", by P. Blanchard, E. Dhyne, C. Fuss and C. Mathieu, *Research series*, March 2012.

224. "Asymmetric information in credit markets, bank leverage cycles and macroeconomic dynamics", by A. Rannenberg, *Research series*, April 2012.
225. "Economic importance of the Belgian ports: Flemish maritime ports, Liège port complex and the port of Brussels - Report 2010", by C. Mathys, *Document series*, July 2012.
226. "Dissecting the dynamics of the US trade balance in an estimated equilibrium model", by P. Jacob and G. Peersman, *Research series*, August 2012.
227. "Regime switches in volatility and correlation of financial institutions", by K. Boudt, J. Danielsson, S.J. Koopman and A. Lucas, *Research series*, October 2012.
228. "Measuring and testing for the systemically important financial institutions", by C. Castro and S. Ferrari, *Research series*, October 2012.
229. "Risk, uncertainty and monetary policy", by G. Bekaert, M. Hoerova and M. Lo Duca, *Research series*, October 2012.
230. "Flights to safety", by L. Baele, G. Bekaert, K. Inghelbrecht and M. Wei, *Research series*, October 2012.
231. "Macprudential policy, countercyclical bank capital buffers and credit supply: Evidence from the Spanish dynamic provisioning experiments", by G. Jiménez, S. Ongena, J.-L. Peydró and J. Saurina, *Research series*, October 2012.
232. "Bank/sovereign risk spillovers in the European debt crisis", by V. De Bruyckere, M. Gerhardt, G. Schepens and R. Vander Vennet, *Research series*, October 2012.
233. "A macroeconomic framework for quantifying systemic risk", by Z. He and A. Krishnamurthy, *Research series*, October 2012.
234. "Fiscal policy, banks and the financial crisis", by R. Kollmann, M. Ratto, W. Roeger and J. in't Veld, *Research series*, October 2012.
235. "Endogenous risk in a DSGE model with capital-constrained financial intermediaries", by H. Dewachter and R. Wouters, *Research series*, October 2012.
236. "A macroeconomic model with a financial sector", by M.K. Brunnermeier and Y. Sannikov, *Research series*, October 2012.
237. "Services versus goods trade : Are they the same?", by A. Ariu, *Research series*, December 2012.
238. "Importers, exporters, and exchange rate disconnect", by M. Amiti, O. Itskhoki and J. Konings, *Research series*, December 2012.
239. "Concording EU trade and production data over time", by I. Van Beveren, A.B. Bernard and H. Vandenbussche, *Research series*, December 2012.
240. "On the origins of the Triffin dilemma: Empirical business cycle analysis and imperfect competition theory", by I. Maes, *Research series*, December 2012.
241. "The Influence of the Taylor rule on US monetary policy", by P. Ilbas, Ø. Røisland and T. Sveen, *Research series*, January 2013.
242. "Economic importance of the Belgian ports: Flemish maritime ports, Liège port complex and the port of Brussels - Report 2011", by C. Mathys, *Document series*, July 2013.
243. "The fragility of two monetary regimes: The European Monetary System and the Eurozone", by P. De Grauwe and Y. Ji, *Research series*, October 2013.
244. "Funding liquidity, market liquidity and TED spread: A two-regime model", by K. Boudt, E. C.S. Paulus and D. W.R. Rosenthal, *Research series*, November 2013.
245. "Robustifying optimal monetary policy using simple rules as cross-checks", by P. Ilbas, Ø. Røisland and T. Sveen, *Research series*, November 2013.
246. "Household and firm leverage, capital flows and monetary policy in a small open economy", by M. Pirovano, *Research series*, November 2013.
247. "The BIS and the Latin American debt crisis of the 1980s", by P. Clement and I. Maes, *Research series*, December 2013.
248. "The importance of the right amount of business resources for firms' exporting behavior", by I. Paeleman, C. Fuss and T. Vanacker, *Research series*, December 2013.
249. "The role of financial frictions during the crisis: An estimated DSGE model", by R. Merola, *Research series*, December 2013.
250. "Bank reactions after capital shortfalls", by C. Kok and G. Schepens, *Research series*, December 2013.
251. "Why firms avoid cutting wages: Survey evidence from European firms", by P. Du Caju, T. Kosma, M. Lawless, J. Messina and T. Rõõm, *Research series*, December 2013.
252. "The distribution of debt across euro area countries: The role of individual characteristics, institutions and credit conditions", by O. Bover, J. M. Casado, S. Costa, Ph. Du Caju, Y. McCarthy, E. Sierminska, P. Tzamourani, E. Villanueva and T. Zavadil, *Research series*, December 2013.
253. "Micro-based evidence of EU competitiveness: The CompNet database", by CompNet Task Force, *Research series*, March 2013.
254. "Information in the yield curve: A macro-finance approach", by H. Dewachter, L. Iania and M. Lyrio, *Research series*, March 2013.

National Bank of Belgium
Limited liability company
RLP Brussels – Company's number: 0203.201.340
Registered office : boulevard de Berlaimont 14 – BE-1000 Brussels
www.nbb.be

Editor

Jan Smets

Member of the Board of directors of the National Bank of Belgium

© Illustrations : National Bank of Belgium

Layout: Analysis and Research Group
Cover: NBB AG – Prepress & Image

Published in March 2014