

UNITED STATES DEPARTMENT OF THE INTERIOR

GEOLOGICAL SURVEY

Preliminary chart showing electric log correlation section

I-I' of some Upper Cretaceous and Tertiary rocks,

Washakie Basin, Wyoming

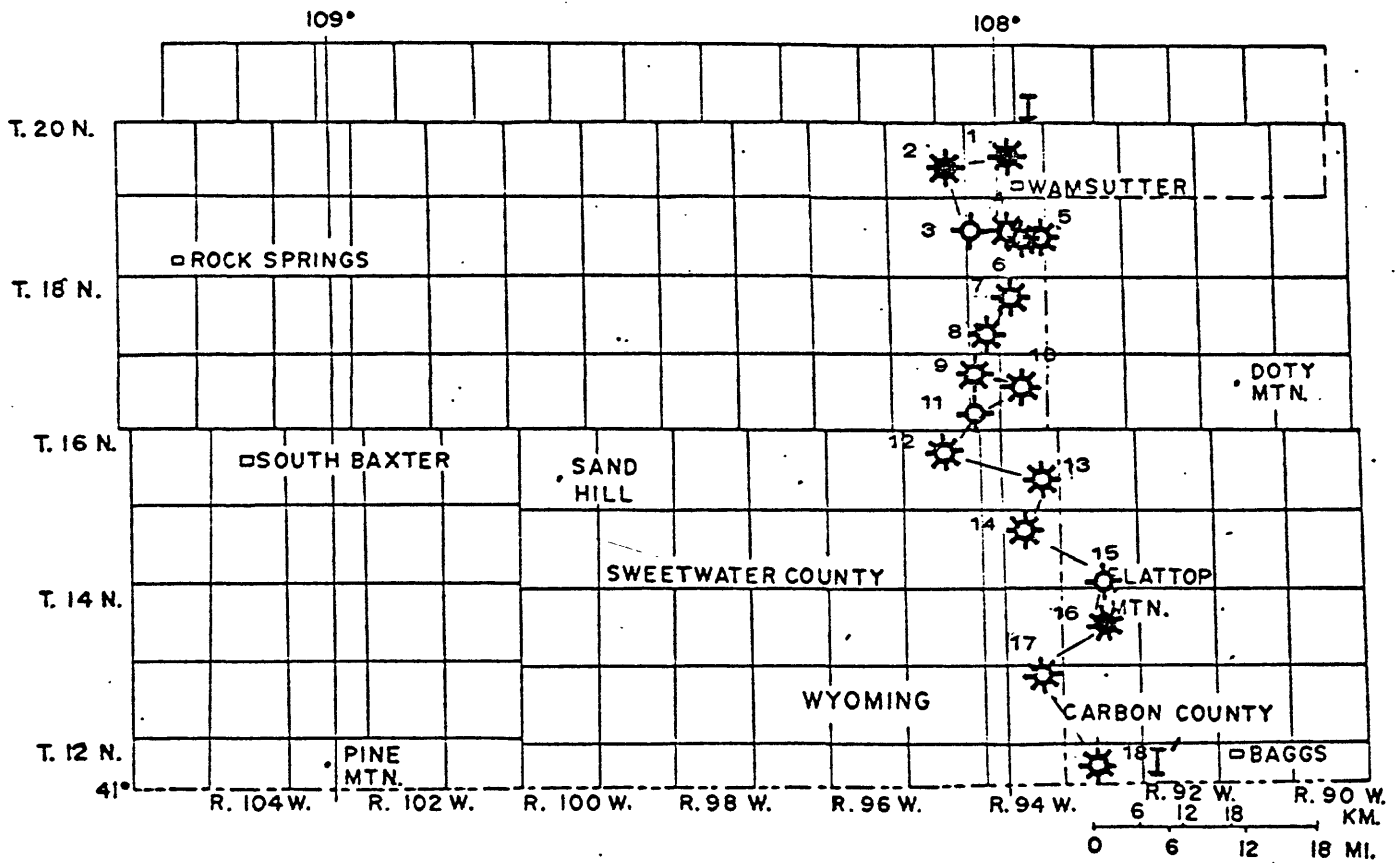
By

Theodore F. Tyler, H. Bucurel-White, and J. R. Peterson

Open-File Report 82-720

1982

This report is preliminary and has not been reviewed for conformity with U.S. Geological Survey editorial standards.



WELL LOCATION

Sheet 1: 1-9
 Sheet 2: 10-18

INDEX MAP


EXPLANATION

B- Bentonite correlation marker

C- Coal Correlation Marker

J- Correlatable stratigraphic horizon

 Unconformity

 Facies relationship and (or) formation contact, dashed where questionable, ? used to indicate higher degree of uncertainty

 Indicates interval and number of drill stem test in each hole

 Cored interval


 KB 6981- Elevation of Kelly bushing in feet

 DF 7294- Elevation of derrick floor in feet

 Perforation Test

 Perforation Test-Gross interval

 Gas well

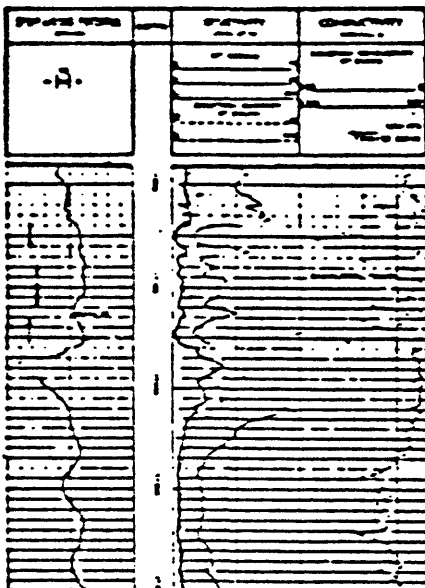
 Dry and abandoned well

 Oil and gas well

TYPES OF LOGS USED

Left curve - spontaneous potential

Right curves - resistivity and conductivity



METRIC EQUIVALENTS

1 ft = 0.305 m

1 psi = 7.03×10^{-2} kg per cm^2

1 BOPD = 159 liters of oil per day

1 MCFD = 28.32 m^3 per day

1 BWPD = 159 liters of water per day

DRILL STEM TEST INFORMATION

Compiled from Petroleum Information Corporation
Well History Control System (WHCS) Data

1



Tests from deepening only - redrill

Perforation Tests

DST 01					
10,273-10,396ft	11,855-11,872ft	----)		
GTS 48 min 6 MCFD	11,818-11,826ft - Acid	2,000 gals)		SQZD
GTS 9 MCFD End of test					
Rec 2200ft GCWC, 270ft GCM					
Rec 5cft GAS, 1000cc MUD			(Acid	1,000 gals
FP 979-960 psi, 888-942 psi			(30,500 gals
ISIP 5008 psi/45 min	11,560-11,577ft		(SWFR	20,675 lbs sand
FSIP 5427 psi/120 min			(2,300 lbs glass
HP 6758-6649 psi					
	10,452-10,470ft)		
	10,475-10,480ft)	Acid	2,250 gals
DST 02	10,519-10,521ft)		
10,396-10,546ft	10,535-10,553ft)		
Rec 1850ft GCW, 150ft GCM					
Rec 1000cc GCM, 1cft MUD					
FP 990-972 psi, 1009-1009 psi					
ISIP 3294 psi/120 min	10,182-10,188ft)		
FSIP 2892 psi/180 min	10,201-10,212ft)		
HP 6641-6586 psi	10,255-10,261ft)	Acid	500 gals
	10,285-10,298ft)		
	10,327-10,335ft)		
DST 03					
10,580-10,664ft					
Rec 2000ft WCUSH, 30ft SGCM					
Rec 2360cc SGCM					
FP 954-954 psi, 972-972 psi	10,182-10,335ft (Gross)	SWFR		90,665 gals	
ISIP 1393 psi/120 min				50,000 lbs. sand	
FSIP 1137 psi/180 min					
HP 6769-6769 psi					
	10,055-10,072ft	(Acid	1,500 gals)	
		(BDA	15,009 gals)	IPF 802 MCFD
		(OFR	5,000 gals)	7 EOPD
DST 04					
11,041-11,115ft	Core 01	10,278-10,336ft	Rec	53ft	
Rec 360ft WTR, 364ft MWTR	Core 02	10,336-10,396ft	Rec	59ft	
Rec 1638ft GCMW, 2300cc GCM	Core 03	10,396-10,405ft	Rec	8ft	
FP 1343-1343 psi, 1489-2237 psi	Core 04	10,406-10,420ft	Rec	7.5ft	
ISIP 5901 psi/20 min	Core 05	10,421-10,437ft	Rec	11ft	
FSIP 5901 psi/180 min	Core 06	10,438-10,487ft	Rec	49ft	
HP 5938-5938 psi	Core 07	10,487-10,546ft	Rec	59ft	

DST 05
 11,467-11,645ft
 GTS Immed. 13 MCFD
 Rec 2040ft GCW, 1110ft GCMW
 Rec 1346ft GCM, 1350cc MUD
 Rec 75cc DIST, 4cft GAS
 FP ?-1343 psi, 1526-1708 psi
 ISIP 6868 psi/120 min
 FSIP 6576 psi/180 min
 HP 6612-6576 psi

Core 08	10,547-10,586ft	Rec 39ft
Core 09	10,587-10,646ft	Rec 55.5ft
Core 10	10,840-10,900ft	Rec 60ft
Core 11	11,040-11,100ft	Rec 60ft
Core 12	11,370-11,430ft	Rec 60ft
Core 13	11,677-11,732ft	Rec 51ft
Core 14	11,905-11,965ft	Rec 60ft
Core 15	12,005-12,065ft	Rec 60ft
Core 16	12,065-12,125ft	Rec 59ft
Core 17	12,345-12,405ft	Rec 60ft
Core 18	12,405-12,465ft	Rec 60ft
Core 19	12,640-12,700ft	Rec 56ft

DST 06
 11,902-11,995ft
 Rec 3400ft GCW CUSH, 2cft GAS
 Rec 1310cc WTR, 450cc MUD
 FP ?-1691 psi, 1637-1736 psi
 ISIP 8278 psi/120 min
 FSIP 7755 psi/120 min
 HP 7213-7159 psi

2



No DST's

Perforation Tests

9,450-9,468ft)	MA	250 gals
)	SWFR	40,000 gals
)		20,000 lbs sand
		IPF	11,500 MCFD
			130 BOPD

3



DST 01
 9,286-9,314ft
 Rec 1,000ft WTR, 1,100ft FWTR
 FP 642-998 psi
 No SIP Reported
 HP 5,102-5,010 psi

DST 02
 9,771-9,821ft
 Rec 360ft HMCW, 640ft MWTR
 Rec 160ft WTR, 1,170ft FWTR
 FP 745-818 psi
 FSIP 937 psi/90 min
 HP 5,410-5,221 psi

DST 03
9,875-9,901ft
GTS 60 min 27 MCFD
GTS 120 min 21.4 MCFD
Rec 270ft MSGCW, 360ft SGCMW
Rec 770ft HGCW, 490ft HGCM
FP 555-832 psi
ISIP 1,797 psi/ ?
FSIP 4,401 psi/90 min
HP 5,480-5,437 psi

DST 04
9,905-10,019ft
GTS 5 min 193 MCFD
Rec 1,160ft WTR, 1,230ft HGCM
FP 897-1,297 psi
No SIP Reported
HP 5,824-5,797 psi

DST 05
9,998-10,099ft
Misrun

DST 5A
10,010-10,099ft
Misrun

DST 6
10,068-10,127ft
Misrun

DST 07
10,109-10,158ft
Rec 1,610ft SGCMW, 760ft SMCW
Rec 30ft GCM
FP 952-993 psi
ISIP 1,062 psi/?
FSIP 1,515 psi/90 min
HP 5,755-5,741 psi

DST 08
10,150-10,300ft
Rec 1,620ft WTR, 180ft SGCM
FP 893-910 psi
ISIP 1,126 psi/?
FSIP 1,666 psi/90 min
HP 5,879-5,865 psi

4



DST 01
9,512-9,634ft
GTS 12 min 90 MCFD
GTS Decr. to 75 MCFD
Rec 1ft Cond, 1,000 ft WTR
Rec 183ft W&GCM, 4 cft GAS
FP 473-387 psi, ? - 535 psi
ISIP 4,953 psi/120 min
FSIP 5,089 psi/180 min
HP 4,915-4,829 psi

DST 02
9,793-9,904ft
Misrun

DST 03
9,796-9,904ft
GTS 20 min 8 MCFD
Rec 1,000ft WCUSH, 89ft SGCM
Rec 5 cft GAS, 1,300 cc W&M
FP 495-463 psi
No SIP Reported

DST 04
11,134-11,229ft
GTS 11 min 850 MCFD
GTS 30 min 604 MCFD
Rec 1,000ft GCMWC, 239ft COND
Rec 2 cft GAS, 250 cc COND
FP 552-515 psi, 552-625 psi
ISIP 7610 psi/120 min
FSIP 7117 psi/180 min
HP 7793-7738

Perforation Tests

11,600-11,618ft)	CIBP	11,350 ft)	
11,410-11,430ft)				
11,137-11,162 ft	(OFR	1,000 gals)
	(BDA	1,500 gals)
	(GAFR	5,000 gals)
	(GAFR	(39,670 gals)
	((300,000 lbs glass)
)
11,001-11,048 ft	OFR	8,900 gals)	
Core 01	---	Rec	60ft	
Core 02	9,788-9,848ft	Rec	58ft	
Core 03	9,848-9,880ft	Rec	29ft	
Core 04	10,946-11,006	Rec	60ft	
Core 05	11,369-11,404ft	Rec	30ft	

5



No DST's

Perforation Tests

9,446-9,450 ft	SQZD	11,145-11,155 ft)	FRACT	44,000 gals emul.
9,455-9,459 ft)		11,198-11,202 ft)		62,500 lbs sand
9,464-9,468 ft)		9,689-9,698 ft)	SQZD	
9,546-9,554 ft)	FRAC	9,705-9,709 ft)		
9,585-9,587 ft)	IPF	9,791-9,803 ft)	FRACT	96,500 gals emul
9,651-9,663 ft)		9,915-9,931 ft)	SQZD	140,100 lbs sand
9,665-9,668 ft)		Core 01	9,473-9,479ft	Rec 4ft
		Core 02	9,479-9,527ft	Rec 46ft
10,400-10,404 ft	SQZD	Core 03	9,846-9,874ft	Rec 26ft
		Core 04	9,874-9,892ft	Rec 16ft
		Core 05	10,848-10,908ft	Rec 60ft

6



No DST's

Perforation Tests

9,567-9,588	FRACT	73,600 gals wtr.)	
		54,400 lbs sand)	IPF 2,109 MCFD
9,766-9,776	FRACT	38,000 gals wtr)	30 BCPD
		54,000 lbs sand)	
Core 01	9,528-9,537ft	Rec	9ft	
Core 02	9,537-9,579ft	Rec	42ft	

7



No DST's

Perforation Tests

9,722-11,118 ft	SEFR	4,796 gals)	
		1,622 lbs	sand)
11,184-11,274 ft	SEFR	57,120 gals)	IPF
		80,000 lbs	sand)
11,306-11,426 ft	SEFR	50,000 gals)	
11,852-11,860 ft		81,000 lbs	sand)

8



No DST's

Perforation Tests

11,930-11,948 ft				
11,962-11,974 ft				
11,544-11,566 ft				
11,627-11,635 ft				
11,648-11,654 ft				
11,660-11,667 ft				
11,690-11,698 ft				
11,706-11,732 ft				
10,229-10,233 ft)	OFR	25 bbls	
10,245-10,260 ft)	SEFR	6,620 bbls	
)		602,952 lbs sand	
10,311-10,317 ft)	IPF	1,250 MCFD	
10,323-10,337 ft)		10 BCPD, 1 BW	

9



No DST's

Perforation Tests

10,578-10,588 ft	SEFR	(1,736 bbls)	
		(107,394 lbs sand)	
		(7,098 lbs glass)	
10,812-10,822 ft	(SEFR	1,004 bbls)	
	(25,200 lbs - sand)	IPF
	(ACFR	4,500 gals)	2,250 MCFD
		800 lbs bead)	

11,315-11,335 ft	(MA	1,000 gals)
	(SGFR	3,470 bbls)
	(4,708 lbs sand)
)
11,884-11,912 ft)	300,000 gals)
) SEFR	666,000 lbs sand)
))
11,954-11,970 ft) Acid	500 gals)
11,978-11,994 ft))
12,444-12,454ft))
12,472-12,476ft)	Acid 2,000 gals)
12,485-12,489ft))

10



No DST's

Perforation Tests

11,465 ft)		
11,699 ft)	Acid	3,000 gals
11,737 ft)	IPF	840 MCFD
11,848 ft)		
12,058 ft)		

Core 01 10,139-10,256ft Rec 117ft

11



No DST or Completion Data

12



No DST's Perforation Tests

12,683 ft)		
12,743 ft)	Acid	3,000 gals
12,858 ft)	IPF	1500 MCFD, 96 BW
12,929 ft)		
13,000 ft)		
13,107 ft)		

13



No DST's

Perforation Tests

10,545 ft)		
10,572 ft)		
10,592 ft)		
10,815 ft)	Acid	13,000 gals
10,863 ft)	FRAC	15,442 gals emul.
)		114,240 lbs sand
10,897 ft)	IPF	400 MCFD, 18 BWPD
11,139 ft)		
11,205 ft)		
11,213 ft)		
11,244 ft)		
11,296 ft)		

5,080-6,294 ft

(Acid 1,000 gals
(SQZD

14



DST 01
 9,159-9,297ft
 Rec 30ft MUD
 FP 52-49 psi, 70-46 psi
 ISIP 123 psi/60 min
 FSIP 455 psi/120 min
 HP 4,537-4488 psi

DST 02
 9,821-9,875ft
 GTS 6 min 29 MCFD
 GTS 60 min 13 MCFD
 Rec 595ft MUD
 FP 866-436 psi, 239-166 psi
 ISIP 2,754 psi/60 min
 FSIP 2,418 psi/120 min
 HP 4,837-4,771 psi

DST 03
 10,860-11,012ft
 GTS 100 min, No Gauge
 Rec 1,300ft SGCM
 FP 208-331 psi, 477-508 psi
 ISIP 724 psi/60 min
 FSIP 1,003 psi/120 min
 HP 5,338-5,316 psi

DST 04
 11,567-11,604ft
 GTS 2 min 16 MCFD
 GTS 60 min TSTM
 Rec 200ft SG&WCM
 Rec 2,218ft HGCMW
 FP 136-296 psi, 483-818 psi
 ISIP 2,175 psi/99 min
 FSIP 2,415 psi/125 min
 HP 6,054-6,012 psi

Perforation Tests

8,744ft)	Acid 2,000 gals	
8,746ft)	FRAC 87,500 gals emul.	
8,750-8,757ft)	120,000 lbs sand	
		(FRAC 91,000 gals emul.)	
11,556-11,606ft)	133,250 lbs sand	IPF 877 MCFD
11,868-11,874 ft		Acid 1,500 gals	
12,069-12,091 ft)		
12,142-12,147 ft)	Acid 500 bbls	
12,147-12,152 ft)		

15



DST 01
8,097-8,130ft
GTS 17 min 121 MCFD
Rec 5,800ft HGCM, 2,180 cc MUD
Rec 0.03 cft GAS
FP 82-197 psi, 2,198-3,096 psi
ISIP 3,801 psi/60 min
FSIP 3,737 psi/120 min
HP 4,050-4,032 psi

DST 02
9,410-9,457ft
Misrun

DST 03
10,603-10,640ft
GTS 55 min
Rec 55ft GCM, 3.3 cft GAS
Rec 1,900 cc GCM, WTR CUSH
FP 1,406-1,051 psi, 723-1,180 psi
ISIP 5,058 psi/45 min
FSIP 5,610 psi/120 min
HP 5,273-5,227 psi

DST 04
8,077-8,133ft
Misrun - PKRS Failed

16



DST 01
10,635-10,820ft
GTS 5 min 216 MCFD, 25 min 116 MCFD
GTS 35 min 285 MCFD, 55 min 101 MCFD
GTS 75 min 53 MCFD
Rec 628ft MUD, 196 ft SGCM
Rec 432ft HGCM
FP 323-277 psi, 246-277 psi
ISIP 2,396 psi/90
FSIP 2,273 psi/120 min
HP 5,386-5,370 psi

DST 02
10,835-11,125ft
GTS 5 min 290 MCFD, 10 min 337 MCFD
GTS 45 min 116 MCFD, 75 min 74 MCFD
GTS 105 min 64 MCFD
Rec 280ft MUD, 465ft SGCM
Rec 465ft HGCM, 200 cc MUD
Rec 2 cft GAS
FP 477-523 psi, 508-523 psi
ISIP 2,672 psi/60 min
FSIP 3,302 psi/240 min
HP 5,478-5,432 psi

DST 03
 11,134-11,272ft
 GTS 5 min 86 MCFD, 10 min 101 MCFD
 GTS 20 min 69 MCFD, 25 min 48 MCFD
 Rec 350ft MUD, 650ft WCM
 Rec 417 cft GAS
 FP 222-294 psi, 420-384 psi
 ISIP 5,444 psi/95 min
 FSIP 5,896 psi/240 min
 HP 5,986-5,932

DST 04
 11,277-11,362ft
 GTS 10 min 5 MCFD, 45 min 3 MCFD
 Rec 13 cft GAS, 180 cc WTR
 FP 1,843-1,932 psi, 1,631-1,240 psi
 ISIP 5,249 psi/90 min
 FSIP 4,256 psi/18 hrs
 HP 6,455-6,916 psi

Perforation Tests

		42,786 gals		
11,277-11,362 ft -	SAFR	40,000 lbs sand		
8,087-8,207ft -	SAFR	40,000 gals		
		43,800 lbs sand	SQZD	
11,008-11,022ft	SAFR	37,717 gals)	
		40,000 lbs sand)	IPF
		61,200 gals)	302 MCFD,
11,135-11,205ft	SAFR	47,000 lbs sand)	1 BOPD, 86BW SQZD

8218 ftSQZD

17



DST 01
 7,435-7,510ft
 Rec 300ft MUD
 FP 150-160 psi, 180-228 psi
 ISIP 3517 psi/60 min
 FSIP 3528 psi/180 min
 HP 3758-3731 psi

DST 02
 9,066-9,156ft
 Misrun

DST 03
 9,076-9,156ft
 Misrun

DST 04
 10,001-10,039ft
 Rec 90ft SGCM
 FP 57-53 psi, 50-53 psi
 ISIP 1100 psi/60 min
 FSIP 1527 psi/120 min
 HP 4941-4935 psi

DST 05
 10,258-10,314ft
 Rec 3680ft GCM
 FP 362-169 psi, 216-2014 psi
 ISIP 4169 psi/60 min
 FSIP 4899 psi/120 min
 HP 5112-5114

DST 06
 10,699-10,725ft
 Misrun

DST 07
 11,730-12,181ft
 Rec 1890ft HGCM
 FP 1986-1604 psi, 1745-1588 psi
 ISIP 2272 psi/60 min
 FSIP 2388 psi/240 min
 HP 6368-6336 psi

DST 08
 12,206-12,312ft
 Rec 188ft MUD, 540ft GCM
 Rec 462ft G&WCM
 FP 2278-1284 psi, 1205-431 psi
 ISIP 4490 psi/60 min
 FSIP 4685 psi/240 min
 HP 7031-7008 psi

DST 09
 12,340-12,571ft
 Rec 2212ft WCUSH
 FP 2314-2615 psi, 1769-1486 psi
 ISIP 6257 psi/60 min
 FSIP 5545 psi/240 min
 HP 7203-7242 psi

DST 10
 12,656-12,668ft
 Rec 2106ft GCWCUSH, 70ft GCM
 FP 834-829 psi, 800-915 psi
 ISIP 6349 psi/60 min
 FSIP 5615 psi/240 min
 HP 7676-7680 psi

DST 11
 12,695-12,759ft
 Rec 315ft WCUSH, 3896ft GCM
 FP 2445-1809 psi, 1881-2396 psi
 ISIP Not Reported
 FSIP 5230 psi/?
 HP 8097-8156 psi

Perforation Tests:

12,649-12,652ft)	Acid	9,500 gals
12,691-12,699ft)	SWFR	58,500 gals
		IPF	61,000 lbs sand
			583 MCFD, 5 BCPD, 50BW

18



DST 01
 2,928-2,979ft
 Rec 270ft WCM, 460ft MW
 Rec 1650ft SMCW, 1 cft GAS
 FP 98-205 psi, 166-299 psi
 ISIP 1314 psi/30 min
 FSIP 1430 psi/120 min
 HP 1565-1538 psi

DST 02
 4,642-4,676ft
 Rec 808ft HGCM 800 cc MUD
 Rec 8 cft GAS
 FP 385-332 psi, 321-332 psi
 ISIP 2185 psi/30 min
 FSIP 2119 psi/120 min
 HP 2641-2627 psi

DST 03
 5,479-5,517ft
 GTS 6 min 38 MCFD, 30 min 83 MCFD
 GTS 45 min 84 MCFD, 60 min 81 MCFD
 Rec 105ft GCM, 400 cc MUD, 1 cft GAS
 FP 93-105 psi, 89-121 psi
 ISIP 1999 psi/30 min
 FSIP 1048 psi/120 min
 HP 3213-3148 psi

Perforation Tests

5,470-5,474ft)		4,000 bbls
5,480-5,504ft)	SGFR	200,000 lbs. sand
5,528-5,542ft)	IPF	1,252 MCFD, 20 BW
5,563-5,574ft)		
5,581-5,588ft)		

DST 04
 5,921-5,951ft
 No Pipe Rec
 FP 50-59 psi, 41-41 psi
 ISIP 2023 psi/30 min
 FSIP 2211 psi/120 min
 HP 3442-3423 psi

DST 05
 7,203-7,278ft
 No Pipe Rec
 GTS 9 min No Gauge
 GTS 25 min 72 MCFD, 50 min 70 MCFD
 Rec 200 cc MUD, 1 cft GAS
 FP 143-129 psi, 109-219 psi
 ISIP 3173 psi/60 min
 FSIP 3013 psi/120 min
 HP 4109-4089 psi

DST 06
 7,374-7,405ft
 GTS 15 min 9 MCFD, 30 min 7 MCFD
 GTS 60 min 3 MCFD
 Rec 330ft GCM, 2100 cc MUD
 FP 189-236 psi, 243-304 psi
 ISIP 1273 psi/60 min
 FSIP 1283 psi/120 min
 HP 4144-4102 psi

ABBREVIATIONS

KB	Kelly bushing, elevation in feet
DF	Derrick floor, elevation in feet
TD	Total depth drilled, in feet
DST	Drill stem test
GTS	Gas to surface
TSTM	Too small to measure
Rec	Recovered
FP	Flow pressure
SIP	Shut-in pressure
ISIP	Initial shut-in pressure
FSIP	Final shut-in pressure
HP	Hydrostatic pressure
GAFR	Gas fract
SQZD	Squeezed
PKRS	Packers
FRAC or FRACT	Hydraulic fracturing
Emul	Emulsion
SUS	Suspended well
IPF	Initial production flow
MCFD	Thousand cubic feet per day
BOPD	Barrels of oil per day
BCPD	Barrels of condensate per day
BWPD	Barrels of water per day
BW	Barrels of water
bbls	Barrels
psi	Pounds per square inch
GCM	Gas cut mud
SGCM	Slightly gas cut mud
HGCM	Highly gas cut mud
WCM	Water cut mud
W & GCM	Water and gas cut mud
G & WCM	Gas and water cut mud
SG & WCM	Slightly gas and water cut mud
GCW	Gas cut water
HGCW	Highly gas cut water
MSGCW	Mud and slightly gas cut water
GCMW	Gas cut muddy water
SGCMW	Slightly gas cut muddy water
HGCMW	Highly gas cut muddy water
SMCW	Slightly mud cut water
HMCW	Highly mud cut water
Cond	Condensate
Dist	Distillate
GCWC or GCWCUSH	Gas cut water cushion
WCUSH	Water cushion
GCMWC	Gas cut muddy water cushion
FWTR	Fresh water
WTR	Water
MWTR or MW	Muddy water
W & M	Water and mud

SWFR	Sand-water fract
BDA	Break-down acid
OFR	Oil fract
MA	Mud acid
CIBP	Cast-iron bridge plug
SAFR	Sand-acid fract
SGFR	Sand-gel fract
ACFR	Acid fract
SEFR	Sand-emulsion fract

REFERENCES

Keith, R. E., 1965, Rock Springs and Blair formations on and adjacent to the Rock Springs Uplift, Sweetwater County, Wyoming, in De Voto, R. H., and Bitter, R. K., eds., Sedimentation of Late Cretaceous and Tertiary outcrops, Rock Springs Uplift: Wyoming Geological Association 19th Annual Field Conference Guidebook, p. 43-53.

Smith, J. H., 1961, A summary of stratigraphy and paleontology Upper Colorado and Montanan groups, southcentral Wyoming, northeastern Utah, and northwestern Colorado, in Wiloth, G. J., ed., Symposium on Late Cretaceous rocks, Wyoming and adjacent areas: Wyoming Geological Association 16th Annual Field Conference Guidebook, p. 101-112.

_____, 1965, A summary of stratigraphy and paleontology, Upper Colorado and Montanan groups, southcentral Wyoming, northeastern Utah, and northwestern Colorado, in De Voto, R. H., and Bitter, R. K., eds., Sedimentation of late Cretaceous and Tertiary outcrops, Rock Springs Uplift: Wyoming Geological Association 19th Annual Field Conference Guidebook, p. 13-26.

Tyler, T. F., 1978a, Preliminary chart showing electric log correlation section AA' of some Upper Cretaceous and Tertiary rocks, Washakie basin, Wyoming: U.S. Geological Survey Open-File Report 78-703, 4 p.

_____, 1978b, Preliminary chart showing electric log correlation section E-E' of some Upper Cretaceous and Tertiary rocks, Cherokee Ridge, Wyoming: U.S. Geological Survey Open-File Report 78-1053, 4 p.

_____, 1979, Preliminary chart showing electric log correlation section CC' of some Upper Cretaceous and Tertiary rocks, Wamsutter Arch, Wyoming: U.S. Geological Survey Open-File Report 79-296, 3 p.

Tyler, T. F., Peterson, J. R., and Bucurel, H., 1981, Preliminary chart showing electric log correlation section JJ' of some Upper Cretaceous and Tertiary rocks, Washakie Basin, Wyoming: U.S. Geological Survey Open-File Report 81-47.