

BRIEF REVIEWS

Immune Regulation by Microvascular Endothelial Cells: Directing Innate and Adaptive Immunity, Coagulation, and Inflammation¹

Silvio Danese,^{2*} Elisabetta Dejana,^{†‡} and Claudio Fiocchi^{2§}

An effective immune response depends not only on the proper activation, regulation, and function of immune cells, but also on their distribution and retention in diverse tissue microenvironments where they encounter a number of stimuli and other cell types. These activities are mediated by endothelial cells, which form specialized microcirculatory networks used by immune cells under both physiological and pathological circumstances. Endothelial cells represent a highly heterogeneous population of cells with the ability to interact with and modulate the function of immune cells. This review is focused on the role of microvascular endothelial cells in innate and adaptive immunity, inflammation, coagulation, angiogenesis, and the therapeutic implications of targeting endothelial cells in selected autoimmune and chronic inflammatory disorders. The Journal of Immunology, 2007, 178: 6017–6022.

The endothelium is a highly specialized cellular system that is composed of $1-6 \times 10^{13}$ endothelial cells (ECs)³ lining a total surface area of 4000–7000 m² (1, 2) and plays a key role in physiological processes such as blood supply, nutrient delivery, metabolic homeostasis, and immune cell trafficking, as well as pathological processes such as inflammation (3–5). Inflammation can be seen as a vascular response (6), where ECs become activated, display increased leakiness, enhanced leukocyte adhesiveness, and procoagulant activity, and form new vessels (7). Thus, an immune response resulting in inflammation depends strictly on a permissive microvasculature, which normally exerts the opposite function of preventing the indiscriminate influx of immune cells into a tissue. Compared with large blood vessels, the microvascular bed constitutes the bulk of the overall endothelial surface, covering an area ~50 times greater than that of all large vessels combined (8).

Major qualitative differences exist between macro- and microvascular ECs, the latter being able to generate a range of mediators, to display distinct adhesion molecule patterns, to activate unique sets of genes, and to form capillaries (9–11).

Much of the information on the contribution of ECs to immunity and inflammation derives from HUVECs (12), but these cells do not reflect the highly specialized nature of microvascular ECs, and the study of ECs from distinct body compartments has confirmed their heterogeneity (9, 10, 13–15). This is best exemplified by the differential expression of homing ligands involved in immune cell trafficking. Mad-CAM-1 is expressed by Peyer's patches high endothelial venules to recruit $\alpha_4\beta_7$ homing receptor-positive naive lymphocytes (16). Likewise, ECs from brain, liver, and other organs express distinct surface markers, protein transporters, and intracellular enzymes (15, 17, 18). The mechanisms responsible for EC heterogeneity are unclear, but tissue-specific and transcription factors likely contribute to the induction or maintenance of specialized EC features (13, 17). In addition to its function in leukocyte trafficking, distribution, and homing, recent evidence indicates that microvascular ECs play a far more direct role in immunity. This review will show that the multifaceted properties of the organ-specific microvasculature convert the perceived passive role of ECs to an active one that controls innate and adaptive immunity, coagulation, and inflammation.

Innate immunity

The primary function of innate immunity is to recognize pathogen-associated molecular patterns (PAMPs) through "pattern recognition receptors." Among these, TLRs are surface molecules that trigger signals resulting in proinflammatory gene expression, leukocyte chemotaxis, phagocytosis, cytotoxicity, and activation of adaptive immune responses (19). Several reports have demonstrated TLRs on ECs (20) (Fig. 1).

*Istituto di Ricerca e Cura a Carattere Scientifico Istituto Clinico Humanitas, Milan, Italy; †Fondazione Italiana per la Ricerca sul Cancro Institute of Molecular Oncology, Milan, Italy; ‡Department of Biomolecular Sciences and Biotechnologies University of Milan, Milan, Italy; §Lerner Research Institute, Cleveland Clinic Foundation, Cleveland, OH 44195

Received for publication January 3, 2007. Accepted for publication February 16, 2007.

The costs of publication of this article were defrayed in part by the payment of page charges. This article must therefore be hereby marked *advertisement* in accordance with 18 U.S.C. Section 1734 solely to indicate this fact.

¹ This work was supported by a grant from the Broad Medical Research Program (to S.D.) and National Institutes of Health Grants DK30399 and DK50984 (to C.F.).

² Address correspondence and reprint requests to Dr. Silvio Danese, Division of Gastroenterology, Istituto di Ricerca e Cura a Carattere Scientifico Istituto Clinico Humanitas,

Viale Manzoni 56, Rozzano, Milan 20089, Italy; E-mail address: sdanese@hotmail.com or Dr. Claudio Fiocchi, Department of Pathobiology, Lerner Research Institute, NC22, Cleveland Clinic Foundation, 9500 Euclid Avenue, Cleveland, OH 44195; E-mail address: fiocchc@ccf.org

³ Abbreviations used in this paper: EC, endothelial cell; EPCR, endothelial protein C receptor; NOD, nucleotide-binding oligomerization domain; PAMP, pathogen-associated molecular pattern; PAR, protease-activated receptor; PC, protein C; TM, thrombomodulin; VEGF, vascular endothelial growth factor.

Copyright © 2007 by The American Association of Immunologists, Inc. 0022-1767/07/\$2.00

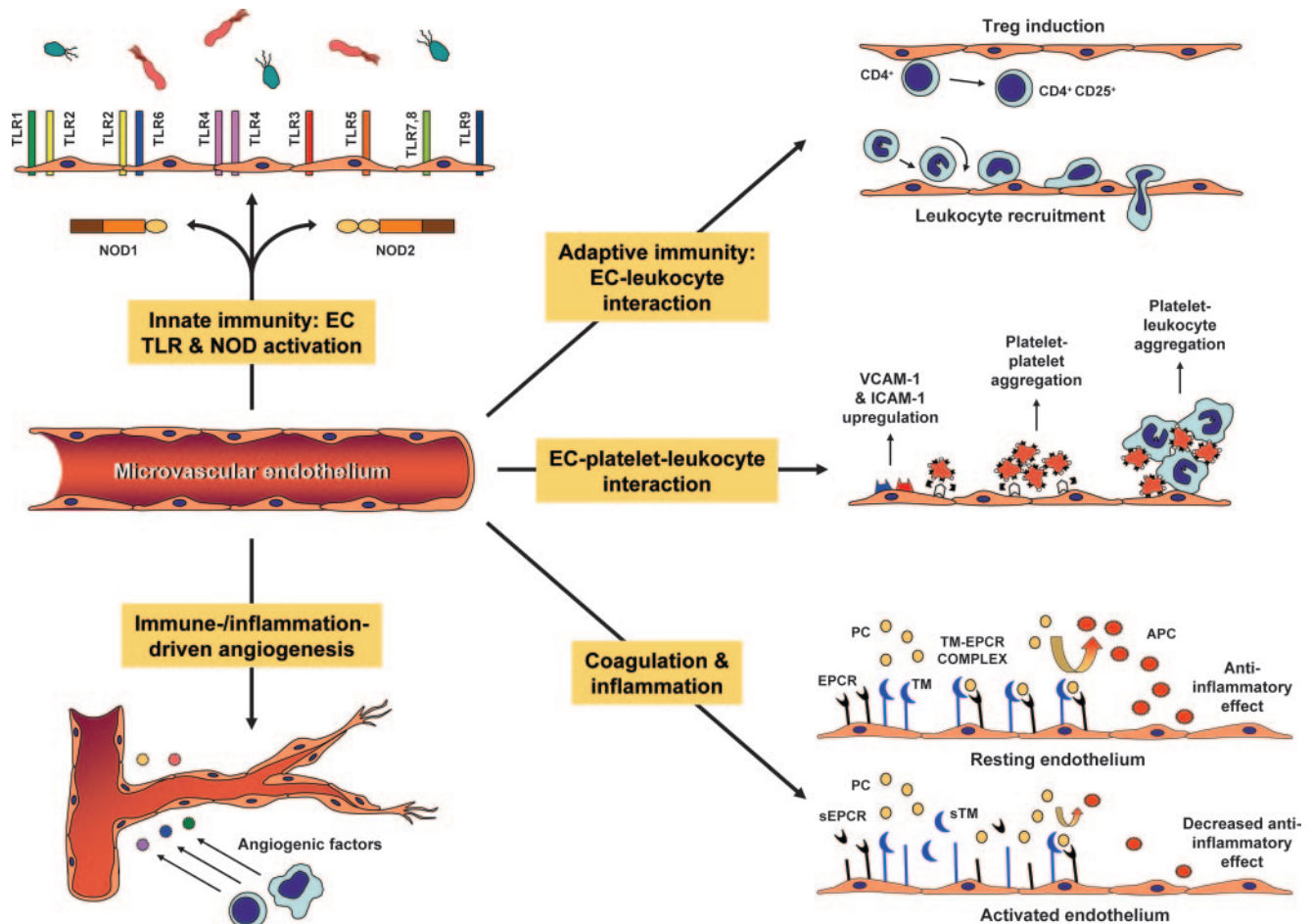


FIGURE 1. Schematic overview of the various functions and cellular interactions mediated by microvascular ECs that impact on innate and adaptive immunity, coagulation, and inflammation. PC, Protein C; APC, activated protein C; sEPCR, soluble EPCR; sTM, soluble TM.P

EC expression of TLR1 is still in question. One report showed TLR1 immunoreactivity in atherosclerotic endothelium (21), while another failed to demonstrate TLR1 expression by human microvascular EC lines in vitro, even though TLR1 transfection inhibited TLR4-dependent signaling (22).

TLR2 has been identified on atherosclerotic endothelium, expressed by von Willebrand factor-positive ECs and markedly up-regulated in vascular inflammation (21). Microvascular EC lines express low levels of TLR2 mRNA and protein, which are up-regulated upon stimulation with LPS, TNF- α , and IFN- γ in a NF- κ B- and MyD88-dependent manner (23–25). Neutrophil NADPH oxidase is involved in EC TLR2 up-regulation, as neutropenic mice show decreased endothelial TLR2 expression (25). This indicates a “cross-talk” between polymorphonuclear neutrophils and ECs that would enhance vascular defenses by up-regulating TLR2. Dunzendorfer et al. (24) reported that human coronary ECs are hyporesponsive to TLR2-specific ligands. Given the current belief that TLRs are proatherogenic, flow suppression of TLR2 expression may be atheroprotective. Functional expression of TLR2 may not be universal because human dermal microvascular ECs fail to respond to TLR2 agonists such as *Mycobacterium tuberculosis* 19-kDa lipoprotein or phenol-soluble modulin unless transfected with TLR2 (26, 27).

TLR3 is spontaneously present on HUVECs, and ligation by poly(I:C) up-regulates its expression together with that of IFN- β , IL-28, IL-29, and STAT1 (28).

TLR4 expression has been demonstrated on various ECs and significantly increases under inflammatory conditions. TLR4 is expressed in coronary ECs (29) and is overexpressed and colocalizes with the p65 subunit of NF- κ B in coronary atherosclerotic plaques, suggesting activation of TLR4 at this site (21). This possibility is supported by the demonstration that LPS activates NF- κ B in dermal microvascular ECs and that LPS, IFN- γ , and TNF- α up-regulate TLR4 mRNA and protein (23). LPS stimulation of coronary ECs induces production of IL-6, IL-8, and MCP-1, transcription of IL-1 β and TNF- α mRNA, as well as expression of ICAM-1, VCAM-1, and endothelial leukocyte adhesion molecule-1 (30). Neutrophil accumulation appears to depend on TLR4 expression by ECs rather than leukocytes as sequestration of neutrophils in the lung is deeply impaired in endothelial TLR4^{-/-} mice (31). The latter observation contrasts with the significant decrease of leukocyte binding caused by LPS in human intestinal microvascular ECs, perhaps reflecting a tolerance of ECs to high levels of endotoxin to which they constantly exposed in the gut microenvironment (32). Finally, LPS can directly initiate angiogenesis through TNFR-associated factor 6-dependent signaling pathways (33).

Because epithelial bacterial translocation exposes subepithelial microvessels to bacterial products, Maaser et al. (34) studied the effect of the TLR5 ligand flagellin on HUVECs, human intestinal microvascular ECs, and dermal ECs. They found that all three ECs constitutively expressed high levels of TLR5

mRNA and protein, and *Salmonella*-infected intestinal epithelial cells induced ICAM-1 expression in cocultured ECs. The functional role of EC TLR5 was demonstrated by induction of leukocyte adhesion and transmigration by flagellin, pointing to a previously unrecognized role of endothelial TLR5 in innate immunity (34).

In the only report investigating the expression of TLR7 or TLR8 by ECs, neither TLR was found to be expressed in HUVECs (28). In contrast, TLR9 is spontaneously expressed by mouse and rat lung ECs, and exposure to CpG DNA induces an inflammatory response manifested by IL-8 and ICAM-1 induction through p38 MAPK- and NF- κ B-mediated pathways (35).

Other receptors mediating innate immunity include the nucleotide-binding oligomerization domains (NODs) 1 and 2, two cytosolic proteins that function as sensors for microbial peptides and regulators of inflammation (36). Both NODs have been detected in ECs and are up-regulated in response to LPS and proinflammatory cytokines (Fig. 1). HUVEC invasion by *Listeria monocytogenes* induces IL-8 production, NF- κ B activation, and p38 MAPK signaling in a NOD1-dependent fashion (37). Muramyl dipeptide enhances IL-6 release by ocular ECs spontaneously expressing NOD2 and induces NF- κ B transcriptional activity in transfected HUVECs overexpressing wild-type NOD2 (38, 39).

Adaptive immunity

ECs cannot replace the regulatory and effector functions of T and B cells, but because ECs can express MHC I and II class molecules and process Ag, have the potential of acting as APC. This action has been documented in vitro, but whether it occurs in vivo is still debatable, although ECs from different species express various accessory molecules, including CD80, CD86, ICOS-L, programmed death ligand 1, programmed death ligand 2, LFA-3, CD40, and CD134L (40). Therefore, the impact of ECs on adaptive immunity may be exerted through their interaction with leukocytes and platelets. Leukocyte-endothelial interactions clearly influence T cell function and directly affect adaptive immunity; platelet-endothelial interactions and platelet-leukocyte-endothelial interactions affect T cell function indirectly, but they will be discussed here because of functional relatedness.

Endothelial-leukocyte interactions

The distribution of leukocytes is tightly regulated by numerous homing and adhesion molecules (receptor and counterreceptor pairs) on the surface of microvascular and immune cells (41). EC-mediated leukocyte distribution displays specialized features depending on the tissue where lymphoid cells are destined to reside (42). In inflammation, ECs still control the type and number of immune cells that extravasate into the interstitium but in a dysregulated fashion (5, 43). Multiple reviews are available on this subject, and the contribution of ECs to adaptive immunity through leukocyte distribution will not be discussed here. A different type of leukocyte-endothelial interaction relevant to adaptive immunity occurs in the induction of transplantation tolerance. Alloantigen-specific CD8⁺CD28⁻ T suppressor cells induce expression of inhibitory receptors and down-regulate adhesion molecules on ECs, rendering them tolerogenic (44). In addition, alloantigen presentation by EC to CD4⁺ T cells induces CD4⁺CD25⁺Foxp3⁺ regulatory T cells

capable of suppressing proliferation of alloreactive T cells in vitro and in vivo (45) (Fig. 1).

Endothelial-platelet interactions

Platelets normally circulate without attaching to the endothelium, but do so when ECs become activated, and platelet adherence triggers inflammation (46) (Fig. 1). The molecular pairs allowing adhesion of platelets to endothelium include P-selectin glycoprotein ligand 1/P-selectin, GPIIb α /von Willebrand factor, GPIIb α /P-selectin, and GPIIb/IIIa/fibrinogen/ICAM-1, respectively (47). Recently, EC-derived fractalkine has also been shown to contribute to platelet activation and adhesion (48). Activated platelets produce massive amounts of proinflammatory mediators and cross-talk with and activate different cells; in turn, platelets are activated by EC-derived proinflammatory substances binding to cognate receptors on the platelets' surface (49, 50). Platelets' mediators are kept in the α -granules and dense body systems (51) and are promptly released upon activation, including histamine, serotonin, thromboxane A₂, platelet-activating factor, PGE₂ and PGD₂, TGF- β , platelet-derived growth factor, multiple chemokines (RANTES, epithelia-derived neutrophil-activating 78, MCP-3, growth-related oncogene α , and MIP-1 α), IL-1 β , and thrombospondins, all of which target immune cells (46, 52). Some of these products control vascular tone and permeability, but platelets also release trophic factors for ECs like vascular endothelial growth factor (VEGF), which promotes angiogenesis (53). In addition, platelets release heparanase, causing degradation of extracellular matrix and facilitating leukocyte extravasation (54). In addition to molecules that alter EC function, platelets produce molecules that directly impact on adaptive immunity, like membrane-bound and soluble CD40L, which engages CD40 on the surface of ECs, leading to adhesion molecule up-regulation, chemokine secretion, and leukocyte recruitment (55). In this regard, activated platelets mimic the action of activated T cells, which express and release CD40L (56). In doing so, platelets modulate the immune response by establishing a link between innate and adaptive immunity (57). Finally, CD40 ligation by platelet CD40L not only promotes immune activation and inflammation but also tissue factor induction and blood coagulation (58).

Endothelial-leukocyte-platelet interactions

Inflamed microvessels can recruit leukocytes through a platelet-dependent mechanism, but at the same time, platelet recruitment is leukocyte dependent (Fig. 1). As an example of the first process, when neutrophils are perfused on an endothelial monolayer to which thrombin-activated platelets have adhered, platelets form a bridge with the endothelium and promote leukocyte adhesion (59). As an example of the second process, using an in vivo postcapillary venule system to study leukocyte dependence of platelet adhesion in ischemia-reperfusion, anti-leukocyte strategies resulted in significantly reduced platelet recruitment (60). The molecular determinants orchestrating leukocyte-dependent platelet adhesion are being elucidated. P-selectin plays a critical role in mediating platelet adhesion to endothelium, primarily through EC- rather than platelet-expressed P-selectin (61). Leukocyte-dependent platelet adhesion involves the participation of P-selectin on both platelet and ECs, as well as CD18-ICAM-1 interaction. Once adhered, platelets create a platform onto which a leukocyte can roll and

adhere firmly through leukocyte-expressed P-selectin glycoprotein ligand 1 and platelet-expressed P-selectin (47). P-selectin is also involved in the delivery of lymphocytes to high endothelial venules even in the absence of functional L-selectin (62).

In addition to adhesion molecules, other mechanisms that mediate EC-leukocyte-platelet interactions depend on chemokines or the CD40/CD40L pathway. Various experimental systems show that release of platelet-stored chemokines that adhere to ECs allows binding and retention of monocytes or lymphocytes (63, 64). In addition to mediating EC-platelet and EC-T cell binding, platelet- and T cell-associated CD40L up-regulates the density of CD40 expression on vascular EC in vivo (65), with important immunomodulatory and proinflammatory implications.

ECs in coagulation and inflammation

In addition to an anticoagulant state, a healthy endothelium also provides anti-inflammatory defenses. This dual action is mediated by the natural anticoagulant protein C (PC) pathway, which is composed of thrombomodulin (TM) and the endothelial protein C receptor (EPCR), both abundantly expressed on the EC surface, and PC, produced in the liver but circulating systemically (66, 67). The capture of PC by the TM/EPCR complex generates activated PC, a potent anti-inflammatory molecule (68, 69), but each component also exerts anti-inflammatory actions individually (Fig. 1).

TM directly inhibits leukocyte adhesion to activated endothelium and, by sequestering proinflammatory high-mobility group-B1 proteins, prevents EC activation (70). EPCR precludes leukocyte influx by blocking the integrin CD11b/CD18, as its deficiency induces neutrophilic infiltration and enhanced chemokine production in LPS-challenged mice compared with wild-type animals (71). In experimental endotoxin-induced inflammation, activated PC inhibits pulmonary vascular injury by inhibiting TNF- α release (72) and limits accumulation of activated leukocytes (73). In human EC-based in vitro systems, activated PC modulates expression of genes related to anti-inflammatory and cell survival pathways, including inhibition of NF- κ B binding to target sites and multiple NF- κ B-regulated genes, such as cytokines, chemokines, and adhesion molecules (74, 75).

Inflammation counteracts the protective effects of the PC pathway. In various animal and human conditions, such as sepsis, airway inflammation, Wegener's granulomatosis, and atherosclerosis, formation of active TM/EPCR/PC complexes is impaired because TM and EPCR are released in a soluble form (Fig. 1), resulting in loss of anti-inflammatory activity (67). Moreover, inflammation induces the EC up-regulation of tissue factor, a proinflammatory molecule involved in hemostasis, thrombosis, and vascular development (76).

Another link between coagulation and inflammation is mediated by protease-activated receptors (PARs). Coagulation leads to the activation of several proteases, including factors Xa, VIIa, and IIa (thrombin), which exert deleterious or protective effects through the selective activation of PAR₁₋₄ (77). PARs have been shown to play a role in innate immunity in various models of airway, gastrointestinal, and joint inflammation, as well as sepsis (77). In addition, PARs regulate vascular tone and permeability, EC proliferation, and angiogenesis.

Immune-driven angiogenesis

Another link of ECs to immunity is the process of angiogenesis, a vital component of both acute and chronic inflammation and integral to most immune-mediated conditions (78). Angiogenesis is the growth of new blood vessels from pre-existing ones, whereas vascular remodeling involves structural modifications without neovessel formation. As inflammation evolves, vessels expand to supply nutrients sustaining the accumulation of activated immune cells in the affected tissues and in the chronic phase local immune cells overproduce EC growth factors (79). The contribution of ECs to inflammation is biphasic: first, functional changes prevail that include dilation, increased permeability, activation, and diapedesis; then, structural changes occur with capillary and venule remodeling (80). In chronic inflammatory disorders, infiltration by macrophages and lymphocytes ensues, tissue damage and repair occur concurrently, and the newly formed vessels become permanent (6, 81). The anatomical expansion and increased activation of the remodeled microvascular bed foster further influx of immune cells, and angiogenesis and inflammation become codependent processes (82).

ECs at sites of immune reactivity display multiple abnormalities, ranging from altered expression of surface molecules to barrier function. The hallmark of a proliferating vessel is the expression of integrins, particularly $\alpha_v\beta_3$ and $\alpha_v\beta_5$ (83), which are essential for pathological angiogenesis (84). Angiogenic vessels up-regulate receptors for angiogenic factors produced by local immune and nonimmune cells, such as basic fibroblast factor, TGF- β , and TNF- α , but growth factors, cytokines, adhesion molecules, matrix metalloproteinases, and extracellular matrix components also contribute to EC activation and growth (78) (Fig. 1).

Both innate and adaptive immune responses promote angiogenesis. Tissue macrophages foster vessel growth, remodeling, or regression (6, 81). Their proangiogenic activity is mediated by various TLRs acting in synergy with adenosine A_{2A} receptors that up-regulate VEGF production (85), but some TLR ligands, like LPS, directly stimulate ECs sprouting in vitro (33). Microbicidal peptides involved in innate immunity also display proangiogenic activity, such as angiogenin 4 and the cathelicidin LL-37/hCAP-18 (86, 87). In regard to adaptive immunity, activated T cells secrete and respond to VEGF (88), and B cells contribute to lung angiogenesis in mice with chronic *Mycoplasma* infection (89). IL-17 is a mediator of EC migration and inducer of proangiogenic factors (90), indicating that the IL-23/IL-17 pathway may be involved in immune-driven angiogenesis (91).

EC-mediated immune dysfunction and disease

Considering their wide-ranging activities, ECs play a vital role in multiple immune-mediated disorders. In rheumatoid arthritis, synovial ECs are activated and display increased leakiness, apoptosis, and angiogenesis (92), changes that contribute to leukocyte recruitment, edema, pannus formation, and joint destruction (93). Similar events occur in psoriatic skin, where ECs actively display adhesion molecule for leukocyte recruitment, form new vessels, and mediate inflammation (94). In multiple sclerosis, transendothelial migration of activated leukocytes is

one of the earliest abnormalities, and exposure of the endothelium to immune cell-derived IFN- γ , TNF- α , and IL-1 β disrupts the blood-brain barrier by disorganizing cell-cell junctions, enhancing leukocyte endothelial adhesion and migration, and increasing expression of MHC class II Ags (95). The endothelium promotes gut inflammation through comparable mechanisms. Compared with normal mucosa, microvessels in chronically inflamed mucosa show major functional alterations in inflammatory bowel disease: the microvasculature is greatly expanded, displays an abnormal architecture, adheres more leukocytes, intimately interacts with platelets, is procoagulant and angiogenic, and has an impaired NO-mediated relaxation response, all features reflecting an active input of mucosal ECs in disease pathogenesis (96). Similar endothelial dysfunctions are found in other immune/inflammatory disorders, such as diabetes, atherosclerosis, and chronic lung disease.

Therapeutic implications

The evidence presented in the preceding paragraphs leaves no doubt that ECs actually dictate whether immune cells will work within the limits of homeostasis or go overboard into autoimmunity and inflammation. Given this influential role, it seems logical to look at ECs as therapeutic targets when aiming at re-establishing normal immunity and resolve inflammation. Because of EC heterogeneous functions, therapeutic strategies are equally plentiful and diverse, ranging from blockade of leukocyte adhesion and activation to antithrombotic and antiangiogenic approaches, and effectiveness has been shown in a variety of human and experimental systems (97). Thus, it is conceivable that a full and permanent recuperation of immune homeostasis, particularly in chronic conditions, can only be achieved by a dual approach that aims not only at direct immunosuppression but also the concomitant inhibition of EC activation and proliferation.

Acknowledgments

We thank Marco Necci for technical assistance and apologize to authors whose work has not been cited due to space limitations.

Disclosures

The authors have no financial conflict of interest.

References

- Fishman, A. 1982. Endothelium: a distributed organ of diverse capabilities. *Ann. NY Acad. Sci.* 401: 1–8.
- Augustin, H. G., D. H. Kizian, and R. C. Johnson. 1994. Differentiation of endothelial cells: analysis of the constitutive and activated endothelial cell phenotype. *Bioessays* 16: 901–906.
- Cook-Mills, J. M., and T. L. Deem. 2005. Active participation of endothelial cells in inflammation. *J. Leukocyte Biol.* 77: 487–495.
- Santiago-Delpin, E. A. 2004. The endothelium and early immune activation: new perspectives and interaction. *Transplant. Proc.* 36: 1709–1713.
- Biedermann, B. C. 2001. Vascular endothelium: checkpoint for inflammation and immunity. *News Physiol. Sci.* 16: 84–88.
- Majno, G. 1998. Chronic inflammation: links with angiogenesis and wound healing. *Am. J. Pathol.* 153: 1035–1039.
- Cines, D. B., E. S. Pollak, C. A. Buck, J. Loscalzo, G. A. Zimmerman, R. P. McEver, J. S. Pober, T. M. Wick, B. A. Konkle, B. S. Schwartz, et al. 1998. Endothelial cells in physiology and in pathophysiology of vascular disorders. *Blood* 91: 3527–3561.
- Wolinsky, H. 1980. A proposal linking clearance of circulating lipoproteins to tissue metabolic activity as a basis for understanding atherogenesis. *Circ. Res.* 47: 301–311.
- Gerlach, E., S. Nees, and B. F. Becker. 1985. The vascular endothelium: a survey of some newly evolving biochemical and physiological features. *Basic Res. Cardiol.* 80: 459–474.
- Lang, I., M. A. Pabst, U. Hiden, A. Blaschitz, G. Dohr, T. Hahn, and G. Desoye. 2003. Heterogeneity of microvascular endothelial cells isolated from human term placenta and macrovascular umbilical vein endothelial cells. *Eur. J. Cell Biol.* 82: 163–173.
- Binion, D. G., G. A. West, K. Ina, N. P. Ziats, S. N. Emancipator, and C. Focchia. 1997. Enhanced leukocyte binding by intestinal microvascular endothelial cells in inflammatory bowel disease. *Gastroenterology* 112: 1895–1907.
- Gimbrone, M. A., R. S. Cotran, and J. Folkman. 1974. Human vascular endothelial cells in culture: growth and DNA synthesis. *J. Cell Biol.* 60: 673–684.
- Belloni, P. N., D. H. Carney, and G. L. Nicolson. 1992. Organ-derived microvessel endothelial cells exhibit differential responsiveness to thrombin and other growth factors. *Microvasc. Res.* 43: 20–45.
- Garlanda, C., and E. Dejana. 1997. Heterogeneity of endothelial cells: specific markers. *Arterioscler. Thromb. Vasc. Biol.* 17: 1193–1202.
- Ribatti, D., B. Nico, A. Vacca, L. Roncali, and F. Dammacco. 2002. Endothelial cell heterogeneity and organ specificity. *J. Hematother. Stem Cell Res.* 11: 81–90.
- Berlin, C., E. L. Berg, M. J. Briskin, D. P. Andrew, P. J. Kilshaw, B. Holzmann, I. L. Weissman, A. Hamann, and E. C. Butcher. 1993. $\alpha_5\beta_1$ integrin mediates lymphocyte binding to the mucosal vascular addressin MAdCAM-1. *Cell* 74: 185–195.
- Pauli, B. U., and C. L. Lee. 1988. Organ preference of metastasis: the role of organ-specifically modulated endothelial cells. *Lab. Invest.* 58: 379–387.
- Aird, W. C., J. M. Edelberg, H. Weiler-Guettler, W. W. Simmons, T. W. Smith, and R. D. Rosenberg. 1997. Vascular bed-specific expression of an endothelial cell gene is programmed by the tissue microenvironment. *J. Cell Biol.* 138: 1117–1127.
- Iwasaki, A., and R. Medzhitov. 2004. Toll-like receptor control of the adaptive immune responses. *Nat. Immunol.* 5: 987–995.
- Heidemann, J., W. Domschke, T. Kucharzik, and C. Maaser. 2006. Intestinal microvascular endothelium and innate immunity in inflammatory bowel disease: a second line of defense? *Infect. Immun.* 74: 5425–5432.
- Edfeldt, K., J. Swedenborg, G. K. Hansson, and Z.-Q. Yan. 2002. Expression of Toll-like receptors in human atherosclerotic lesions: a possible pathway for plaque activation. *Circulation* 105: 1158–1161.
- Spitzer, J. H., A. Visintin, A. Mazzoni, M. N. Kennedy, and D. M. Segal. 2002. Toll-like receptor 1 inhibits Toll-like receptor 4 signaling in endothelial cells. *Eur. J. Immunol.* 32: 1182–1187.
- Faure, E., L. Thomas, H. Xu, A. E. Medvedev, O. Equils, and M. Ardit. 2001. Bacterial lipopolysaccharide and IFN- γ induce Toll-like receptor 2 and Toll-like receptor 4 expression in human endothelial cells: role of NF- κ B activation. *J. Immunol.* 166: 2018–2024.
- Dunzendorfer, S., H.-K. Lee, and P. S. Tobias. 2004. Flow-dependent regulation of endothelial Toll-like receptor 2 expression through inhibition of SP1 activity. *Circ. Res.* 95: 684–691.
- Fan, J., R. S. Frey, and A. B. Malik. 2003. TLR4 signaling induces TLR2 expression in endothelial cells via neutrophil NADPH oxidase. *J. Clin. Invest.* 112: 1234–1243.
- Bulut, Y., E. Faure, L. Thomas, O. Equils, and M. Ardit. 2001. Cooperation of Toll-like receptor 2 and 6 for cellular activation by soluble tuberculosis factor and *Borrelia burgdorferi* outer surface protein A lipoprotein: role of Toll-like interacting protein and IL-1 receptor signaling molecules in Toll-like receptor 2 signaling. *J. Immunol.* 167: 987–994.
- Faure, E., O. Equils, P. A. Sieling, L. Thomas, F. X. Zhang, C. J. Kirschning, N. Polentarutti, M. Muzio, and M. Ardit. 2000. Bacterial lipopolysaccharide activates NF- κ B through Toll-like receptor 4 (TLR-4) in cultured human dermal endothelial cells. *J. Biol. Chem.* 275: 11058–11063.
- Tissari, J., J. Siren, S. Meri, I. Julkunen, and S. Matikainen. 2005. IFN- α enhances TLR3-mediated antiviral cytokine expression in human endothelial and epithelial cells by up-regulating TLR3 expression. *J. Immunol.* 174: 4289–4294.
- Dunzendorfer, S., H.-K. Lee, K. Soldau, and P. S. Tobias. 2004. Toll-like receptor 4 functions intracellularly in human coronary artery endothelial cells: roles of LBP and sCD14 in mediating LPS-responses. *FASEB J.* 18: 1117–1119.
- Zeuke, S., A. J. Kusumoto, H. A. Katus, and H. Heine. 2002. TLR4-mediated inflammatory activation of human coronary endothelial cells by LPS. *Cardiovasc. Res.* 56: 126–134.
- Andonegui, G., C. S. Bonder, F. Green, S. C. Mullaly, L. Zbytuinik, E. Raharjo, and P. Kubec. 2003. Endothelium-derived Toll-like receptor-4 is the key molecule in LPS-induced neutrophil sequestration into lungs. *J. Clin. Invest.* 111: 1011–1020.
- Ogawa, H., P. Rafiee, J. Heidemann, P. J. Fisher, N. A. Johnson, M. F. Ortersson, B. Kalyanaraman, K. A. Pritchard, and D. G. Binion. 2003. Mechanisms of endotoxin tolerance in human intestinal microvascular endothelial cells. *J. Immunol.* 170: 5956–5964.
- Pollet, I., C. J. Opina, C. Zimmerman, K. G. Leong, F. Wong, and A. Karsan. 2003. Bacterial lipopolysaccharide directly induces angiogenesis through TRAF6-mediated activation of NF- κ B and c-Jun N-terminal kinase. *Blood* 102: 1740–1742.
- Maaser, C., J. Heidemann, C. von Eiff, A. Lugerling, T. W. Spahn, D. G. Binion, W. Domschke, N. Lugerling, and T. Kucharzik. 2004. Human intestinal microvascular endothelial cells express Toll-like receptor 5: a binding partner for bacterial flagellin. *J. Immunol.* 172: 5056–5062.
- Li, J., Z. Ma, Z. L. Tang, T. Stevens, B. Pitt, and S. Li. 2004. CpG DNA-mediated immune response in pulmonary endothelial cells. *Am. J. Physiol.* 287: L552–L558.
- Inohara, N., and G. Nunez. 2003. NODs: intracellular proteins involved in inflammation and apoptosis. *Nat. Rev. Immunol.* 3: 371–382.
- Opitz, B., A. Puschel, W. Beermann, A. C. Hocke, S. Forster, B. Schmeck, V. van Laak, T. Chakraborty, N. Suttrop, and S. Hippelstiel. 2006. *Listeria monocytogenes* activated p30 MAPK and induced IL-8 secretion in a nucleotide-binding oligomerization domain 1-dependent manner in endothelial cells. *J. Immunol.* 176: 484–490.
- Davey, M. P., T. M. Martin, S. R. Planck, J. Lee, D. Zamora, and J. T. Rosenbaum. 2006. Human endothelial cells express NOD2/CARD15 and increase IL-6 in response to muramyl dipeptide. *Microvasc. Res.* 71: 103–107.
- Oh, H.-M., H.-J. Lee, G.-S. Seo, E.-Y. Choi, S.-H. Kweon, C.-H. Chun, W.-C. Han, K.-M. Lee, S.-C. Choi, and C.-D. Jun. 2005. Induction and localization of NOD2 protein in human endothelial cells. *Cell. Immunol.* 237: 37–44.

40. Marelli-Berg, F. M., and S. J. Jarmin. 2004. Antigen presentation by the endothelium: a green light for antigen-specific T cell trafficking? *Immunol. Lett.* 93: 109–113.
41. Butcher, E. C., and L. J. Picker. 1996. Lymphocyte homing and homeostasis. *Science* 272: 60–66.
42. Butcher, E. C., M. Williams, K. Youngman, L. Rott, and M. Briskin. 1999. Lymphocyte trafficking and regional immunity. *Adv. Immunol.* 72: 209–253.
43. Granger, D. N., and P. Kubes. 1994. The microcirculation and inflammation: modulation of leukocyte-endothelial cell adhesion. *J. Leukocyte Biol.* 55: 662–675.
44. Manavalan, J. S., S. Kim-Schulze, L. Scotto, A. J. Naiyer, G. Vlad, P. C. Colombo, C. Marboe, D. Mancini, R. Cortesini, and N. Suci-Foca. 2004. Alloantigen specific CD8⁺CD28⁻FOXP3⁺ T suppressor cells induce ILT3⁺ILT4⁺ tolerogenic endothelial cells, inhibiting alloreactivity. *Int. Immunol.* 16: 1055–1068.
45. Krupnick, A. S., A. E. Gelman, W. Barchey, S. Richardson, F. H. Kreisel, L. A. Turka, M. Colonna, G. A. Patterson, and D. Kreisel. 2005. Cutting edge: murine vascular endothelium activates and induces the generation of allogeneic CD4⁺25⁺Foxp3⁺ regulatory T cells. *J. Immunol.* 175: 6265–6270.
46. Weyrich, A. S., and G. A. Zimmerman. 2004. Platelets: signaling cells in the immune continuum. *Trends Immunol.* 25: 489–495.
47. Tailor, A., D. Cooper, and D. N. Granger. 2005. Platelet-vessel wall interactions in the microcirculation. *Microcirculation* 12: 1–11.
48. Schafer, A., C. Schulz, M. Eigenthaler, D. Fraccarollo, A. Kobsar, M. Gawaz, G. Ertl, U. Walter, and J. Bauersachs. 2004. Novel role of the membrane-bound fractalkine in platelet activation and adhesion. *Blood* 103: 407–412.
49. Selak, M. A. 1994. Neutrophil-platelet interactions in inflammation. *Receptor* 4: 3–7.
50. Weyrich, A. S., S. M. Prescott, and G. A. Zimmerman. 2002. Platelets, endothelial cells, inflammatory chemokines, and restenosis. *Circulation* 106: 1433–1435.
51. Klinger, M. H. F., and W. Jelkmann. 2002. Role of blood platelets in infection and inflammation. *J. Interferon Cytokine Res.* 22: 913–922.
52. Brandt, E., A. Ludwig, F. Peterson, and H. D. Flad. 2000. Platelet-derived CXC chemokines: old players in new games. *Immunol. Rev.* 177: 204–216.
53. Salgado, R., I. Benoy, J. Bogers, R. Weytjens, P. Vermeulen, L. Dirix, and E. Van Marck. 2001. Platelets and vascular endothelial growth factor (VEGF): a morphological and functional study. *Angiogenesis* 4: 37–43.
54. Vlodaysky, I., A. Eldor, A. Haimovitz-Friedman, Y. Matzner, R. Ishai-Michaeli, Y. Naparstek, I. R. Cohen, and Z. Fuks. 1992. Expression of heparanase by platelets and circulating cells of the immune system: possible involvement in diapedesis and extravasation. *Invasion Metastasis* 12: 112–127.
55. Henn, V., J. R. Slupsky, M. Grafe, I. Anagnostopoulos, R. Forster, G. Muller-Berghaus, and R. A. Krocak. 1998. CD40 ligand on activated platelets triggers an inflammatory reaction of endothelial cells. *Nature* 391: 591–594.
56. Danese, S., and C. Focci. 2005. Platelet activation and the CD40/CD40 ligand pathway: mechanisms and implications for human disease. *Crit. Rev. Immunol.* 25: 103–121.
57. Elzey, B. D., J. Tian, R. J. Jensen, A. K. Swanson, J. R. Lees, S. R. Lentz, C. S. Stein, B. Nieswandt, Y. Wang, B. L. Davidson, and T. L. Ratliff. 2003. Platelet-mediated modulation of adaptive immunity: a communication link between innate and adaptive immune compartments. *Immunity* 19: 9–19.
58. Slupsky, J. R., M. Kalbas, A. Willuweit, V. Henn, R. A. Krocak, and G. Muller-Berghaus. 1998. Activated platelets induce tissue factor expression on human umbilical vein endothelial cells by ligation of CD40. *Thromb. Haemost.* 80: 1008–1014.
59. Kirton, C. M., and G. B. Nash. 2000. Activated platelets adherent to an intact endothelial cell monolayer bind flowing neutrophils and enable them to transfer to the endothelial surface. *J. Lab. Clin. Med.* 136: 303–313.
60. Cooper, D., J. Russell, K. D. Chitman, M. C. Williams, R. E. Wolf, and D. M. Granger. 2004. Leukocyte dependence of platelet adhesion in postcapillary venules. *Am. J. Physiol.* 286: H1895–H1900.
61. Massberg, S., G. Enders, R. Leiderer, S. Eisenmenger, D. Vestweber, F. Krombach, and K. Messmer. 1998. Platelet-endothelial interactions during ischemia/reperfusion: the role of P-selectin. *Blood* 92: 507–515.
62. Diacovo, T. G., K. D. Puri, R. A. Warnock, T. A. Springer, and U. H. von Adrian. 1996. Platelet-mediated lymphocyte delivery to high endothelial venules. *Science* 273: 252–255.
63. von Hundelshausen, P., K. S. C. Weber, Y. Huo, A. E. I. Proudfoot, P. J. Nelson, K. Ley, and C. Weber. 2001. RANTES deposition by platelets triggers monocyte arrest on inflamed and atherosclerotic endothelium. *Circulation* 103: 1772–1777.
64. Danese, S., C. delaMotte, A. Sturm, J. D. Vogel, G. A. West, S. A. Strong, J. A. Katz, and C. Focci. 2003. Platelets trigger a CD40-dependent inflammatory response in the microvasculature of inflammatory bowel disease patients. *Gastroenterology* 124: 1249–1264.
65. Vowinkel, T., K. C. Wood, K. Y. Stokes, J. Russell, C. F. Kriegstein, and D. N. Granger. 2006. Differential expression and regulation of murine CD40 on regional vascular beds. *Am. J. Physiol.* 290: H631–H639.
66. Dahlback, B., and B. O. Villoutreix. 2005. Regulation of blood coagulation by the protein C anticoagulant pathway: novel insights into structure-function relationship and molecular recognition. *Arterioscler. Thromb. Vasc. Biol.* 25: 1311–1320.
67. Esmon, C. T. 2006. Inflammation and the activated protein C anticoagulant pathway. *Semin. Thromb. Hemost.* 32(Suppl. 1): 49–60.
68. Esmon, C. T. 2003. The protein C pathway. *Chest* 124: 26S–32S.
69. Dahlback, B., and B. O. Villoutreix. 2005. The anticoagulant protein C pathway. *FEBS Lett.* 579: 3310–3316.
70. Abeyama, K., D. M. Stern, Y. Ito, K. Kawahara, Y. Yoshimoto, M. Tanaka, T. Uchimura, N. Ida, Y. Yamazaki, S. Yamada, et al. 2005. The N-terminal domain of thrombomodulin sequesters high-mobility group-B1 protein, a novel anti-inflammatory mechanism. *J. Clin. Invest.* 115: 1267–1274.
71. Iwaki, T., D. T. Cruz, J. A. Martin, and F. J. Castellino. 2005. A cardioprotective role for the endothelial protein C receptor in lipopolysaccharide-induced endotoxemia in the mouse. *Blood* 105: 2364–2371.
72. Murakami, K., K. Okajima, M. Uchiba, M. Johno, T. Nakagaki, and H. Takatsuki. 1997. Activated protein C prevents LPS-induced pulmonary vascular injury by inhibiting cytokine production. *Am. J. Physiol.* 272: L197–L202.
73. Murakami, K., K. Okajima, M. Uchiba, M. Johno, T. Nakagaki, H. Okabe, and H. Takatsuki. 1996. Activated protein C attenuates endotoxin-induced pulmonary vascular injury by inhibiting activated leukocytes in rats. *Blood* 87: 642–647.
74. Joyce, D. E., L. Gelbert, A. Ciaccia, B. DeHoff, and B. W. Grinnell. 2001. Gene expression profile of antithrombotic protein c defines new mechanisms modulating inflammation and apoptosis. *J. Biol. Chem.* 276: 11199–11203.
75. Francini, N., E. B. Bachli, N. Blau, M. S. Leikauf, A. Schaffner, and G. Schoedon. 2004. Gene expression profiling of inflamed human endothelial cells and influence of activated protein C. *Circulation* 110: 2903–2909.
76. Chu, A. J. 2005. Tissue factor mediates inflammation. *Arch. Biochem. Biophys.* 440: 123–132.
77. Cirino, G., and N. Vergnolle. 2006. Proteinase-activated receptors (PARs): crossroads between innate immunity and coagulation. *Curr. Opin. Pharmacol.* 6: 428–434.
78. Carmeliet, P. 2005. Angiogenesis in life, disease and medicine. *Nature* 438: 932–936.
79. Carmeliet, P. 2003. Angiogenesis in health and disease. *Nat. Med.* 9: 653–660.
80. Carmeliet, P. 2000. Mechanisms of angiogenesis and arteriogenesis. *Nat. Med.* 6: 389–395.
81. Frantz, S., K. A. Vincent, O. Feron, and R. A. Kelly. 2005. Innate immunity and angiogenesis. *Circ. Res.* 96: 15–26.
82. Jackson, J. R., M. P. Seed, C. H. Kircher, D. A. Willoughby, and J. D. Winkler. 1997. The codependence of angiogenesis and chronic inflammation. *FASEB J.* 11: 457–465.
83. Eliceiri, B. P., and D. A. Cheresh. 2000. Role of α_v integrins during angiogenesis. *Cancer J.* 6(Suppl. 3): S245–S249.
84. Mahabeshwar, G. H., W. Feng, D. R. Phillips, and T. V. Byzova. 2006. Integrin signaling is critical for pathological angiogenesis. *J. Exp. Med.* 203: 2495–2507.
85. Pinhal-Enfield, G., M. Ramanathan, G. Hasko, S. N. Vogel, A. L. Salzman, G. J. Boons, and S. J. Leibovich. 2003. An angiogenic switch in macrophages involving synergy between Toll-like receptors 2, 4, 7, and 9 and adenosine A_{2A} receptors. *Am. J. Pathol.* 163: 711–721.
86. Hooper, L. V., T. S. Stappenback, C. V. Hong, and J. I. Gordon. 2003. Angiogenins: a new class of microbicidal proteins involved in innate immunity. *Nat. Immunol.* 4: 269–273.
87. Koczulla, R., G. von Degenfeld, C. Kupatt, F. Krotz, S. Zhaller, T. Gloe, A. Pfosser, P. Boecksteegers, U. Welsch, P. S. Hiemstra, et al. 2003. An angiogenic role for the human peptide antibiotic LL-37/hCAP-18. *J. Clin. Invest.* 111: 1665–1672.
88. Mor, F., F. J. Quintana, and I. R. Cohen. 2004. Angiogenesis-inflammation cross-talk: vascular endothelial growth factor is secreted by activated T cells and induces Th1 polarization. *J. Immunol.* 172: 4618–4623.
89. Aurora, A. B., P. Baluk, D. Zhang, S. S. Sidhu, G. M. Dolganov, C. Basbaum, D. M. McDonald, and N. Killeen. 2005. Immune complex-dependent remodeling of the airway vasculature in response to a chronic bacterial infection. *J. Immunol.* 175: 6319–6326.
90. Numasaki, M., J.-I. Fukushi, M. Ono, S. K. Narula, P. J. Zavadny, T. Kudo, P. D. Robbins, H. Tahara, and M. T. Lotze. 2003. Interleukin-17 promotes angiogenesis and tumor growth. *Blood* 101: 2620–2627.
91. McKenzie, B. S., R. A. Kastelein, and D. J. Cua. 2006. Understanding the IL-23/IL-17 immune pathway. *Trends Immunol.* 27: 17–23.
92. Middleton, J., L. Americh, R. Gayon, D. Julien, L. Aguilar, F. Amalric, and J.-P. Girard. 2004. Endothelial cell phenotypes in the rheumatoid synovium: activated, angiogenic, apoptotic and leaky. *Arthritis Res. Ther.* 6: 60–72.
93. Szekanecz, Z., and A. E. Koch. 2004. Vascular endothelium and immune responses: implications for inflammation and angiogenesis. *Rheum. Dis. Clin. North Am.* 30: 97–114.
94. Lowe, P. M., M. L. Lee, C. J. Jackson, S. S. To, A. J. Cooper, and L. Schrieber. 1995. The endothelium in psoriasis. *Br. J. Dermatol.* 132: 497–505.
95. Andjelkovic, A. V., and J. S. Patcher. 1998. Central nervous system endothelium in neuroinflammatory, neuroinfectious, and neurodegenerative disease. *J. Neurosci. Res.* 51: 423–430.
96. Hatoum, O. A., D. G. Binion, M. F. Otterson, and D. D. Gutterman. 2003. Acquired microvascular dysfunction in inflammatory bowel disease: loss of nitric oxide-mediated vasodilation. *Gastroenterology* 125: 58–69.
97. Schraa, A. J., M. Everts, R. J. Kok, S. A. Aegisdottir, D. K. Meijer, L. F. deLeij, and G. Molema. 2002. Development of vasculature targeting strategies for the treatment of cancer and chronic inflammatory disorders. *Biotechnol. Annu. Rev.* 8: 133–165.