

Inflammatory bowel disease biopsies: updated British Society of Gastroenterology reporting guidelines

Roger M Feakins

► Additional material is published online only. To view please visit the journal online (<http://dx.doi.org/10.1136/jclinpath-2013-201885>).

Correspondence to
Professor Roger M Feakins,
Department of Cellular
Pathology, Royal London
Hospital, Barts Health NHS
Trust, Pathology and Pharmacy
Building, Newark Street,
London E1 2ES, UK;
r.m.feakins@qmul.ac.uk

Received 25 July 2013
Accepted 28 July 2013

ABSTRACT

Accurate histopathological assessment of biopsies is important for the diagnosis, subclassification, and management of chronic idiopathic inflammatory bowel disease (IBD). British Society of Gastroenterology (BSG) guidelines for the initial histopathological diagnosis of IBD were published in 1997. Changes since then include: more widespread use of full colonoscopy; greater recognition of the effects of time and treatment; improved documentation of variations in anatomical distribution; better understanding of the mimics of IBD; significant progress in clinical management; and modifications of terminology. Accordingly, an update is required. These revised guidelines aim to optimise the quality and consistency of reporting of biopsies taken for the initial diagnosis of IBD by summarising the literature and making recommendations based on the available evidence. Advice from existing clinical guidelines is also taken into account. Among the subjects discussed are: distinguishing IBD from other colitides, particularly infective colitis; subclassification of IBD (as ulcerative colitis, Crohn's disease, or IBD unclassified); the discriminant value of granulomas; aspects of disease distribution, including discontinuity in ulcerative colitis; time-related changes; differences between paediatric and adult IBD; the role of ileal and upper gastrointestinal biopsies; differential diagnoses such as diverticular colitis and diversion proctocolitis; and dysplasia. The need to correlate the histological features with clinical and endoscopic findings is emphasised. An approach to the conclusion of an IBD biopsy report based on the acronym Pattern, Activity, Interpretation, Dysplasia (PAID) is suggested. The key recommendations are listed at the end of the document.

INTRODUCTION: GUIDELINE DEVELOPMENT PROCESS

Update: reasons

The British Society of Gastroenterology (BSG) guidelines for the initial histopathological diagnosis of inflammatory bowel disease (IBD) were published in 1997.¹ An update is now due. In a national survey, histopathologists identified diverticular colitis, diversion colitis, indeterminate colitis and grading of activity as subjects needing attention.² Further reasons for an update include greater use of full colonoscopy rather than limited site sampling,³ and better recognition of the effects of time and treatment on histology.^{3,4}

Objectives

- To optimise the quality of reporting of biopsies taken for the diagnosis of IBD.

- To promote consistency of pathologists' approach to reporting.
- To encourage correlation between histological and clinical findings, including discussion at clinicopathological meetings.
- To minimise the use of ambiguous or confusing terms.

Process

The advice provided by the BSG at the time of writing was followed, with some exceptions which are mentioned below (see online supplementary appendix 1 for more details).

Authorship and review

Draft versions were initially submitted by the author to the pathology section committee of the BSG for review. The content has now been discussed with and approved by the pathology section committee, the clinical services and standards committee of the BSG, and the chair of the IBD section of the BSG. The document is also approved by the British Division of the International Academy of Pathology (BDIAP).

Patient groups

The patient groups covered are those with IBD and relevant related gastrointestinal diseases. At the time of drafting, patient representation was not considered appropriate for the development of a guideline of this type. However, the document repeatedly emphasises the need for good communication between pathologists and clinicians.

Search strategy and sources of evidence

The advice and recommendations are variably based on peer-reviewed publications, expert opinions, accepted practice and consensus. To identify relevant studies, a PubMed search was done using combinations of key words, for example, IBD, ulcerative colitis (UC), Crohn's disease (CD), histopathology (see online supplementary appendix 1). With one exception, papers published before 1984 were not included. Publications were reviewed critically, followed where required by detailed tabulation of findings from multiple studies.

Recommendations and evidence from established guidelines were also taken into account. These included clinical and pathological guideline documents produced by the European Crohn's and Colitis Organisation (ECCO),³⁻⁵ the BSG,⁶ the World Congress of Gastroenterology,⁷ the UK Royal College of Pathologists,⁸ and UK cancer screening programmes.⁹ The previous set of BSG

To cite: Feakins RM. *J Clin Pathol* Published Online First: [please include Day Month Year] doi:10.1136/jclinpath-2013-201885

IBD reporting guidelines for histopathologists was consulted frequently.¹

Evidence levels

Evidence levels (EL) and graded recommendations (RG) suggested by the Oxford Centre for Evidence-Based at the time of writing (<http://www.cebm.net/index.aspx?o=1025>, and reproduced in online supplementary appendix 3), are given where possible. This system was preferred over others because it is used in existing ECCO and BSG IBD guidelines.^{3 5} However, it can sometimes be difficult to apply to histopathology.

Initial versus follow-up biopsies

The guidelines have, where possible, distinguished initial biopsies from follow-up biopsies. This is very important because histological features and patterns of disease are influenced by the passage of time and by drug therapy.

Discriminant histological features: further considerations

In the tables and discussions of discriminant features in the sections on IBD versus non-IBD: histology, and ulcerative colitis versus Crohn's disease: histology:

- ▶ Studies confined to initial biopsies are favoured strongly over those which include non-initial biopsies.
- ▶ Abnormalities are generally regarded as reliable if they are consistently discriminant in at least two reports, with no contradictory findings in other reports.
- ▶ Additional emphasis is given to studies of multiple-site biopsies, though such publications are sparse.
- ▶ True 'meta-analysis' is often impossible because terminology, definitions, comparisons and subgroups may differ.

Implications

Acceptance of the recommendations in this document might generate more biopsies and increase the workload for histopathologists and other staff. However, it could also help improve patient management, which in the longer term might reduce both workload and costs. An audit after at least 18 months of the value and practicality of the guidelines would help determine the content of a further update. A more detailed summary of possible implications is given in online supplementary appendix 2.

CLINICAL CONSIDERATIONS

Value of biopsy assessment

Reasons for taking a biopsy include:

- ▶ confirmation of the diagnosis of IBD
- ▶ distinction between UC and CD^{3 5 10 11}
- ▶ exclusion of dysplasia^{3 10}
- ▶ exclusion of coexistent conditions or complications.¹⁰

The following may also be assessed:

- ▶ disease activity^{3 12}
- ▶ disease extent.^{3 11}

Most initial biopsies for IBD are taken because symptoms or endoscopic features suggest the diagnosis.

Clinical details

Diagnosis and classification of IBD depend on a combination of clinical, endoscopic and pathological features.^{11 13–15} Several entities can mimic IBD clinically and histologically (EL2a RGB) (see section on Mimics of IBD).^{13 14} Correlation of histological features with clinical and endoscopic findings is essential and is facilitated by participation in multidisciplinary meetings where

IBD cases are discussed. Indeed, better interaction between histopathologists and endoscopists has been formally recommended in clinical guidelines.¹⁶

Tissue sampling

Biopsies from endoscopically normal and abnormal mucosa should be available.^{5 17} For optimal diagnosis and classification of IBD there should be samples of the ileum, at least four colonic sites, and the rectum, with a minimum of two biopsies from each site (EL1b RGB).⁵ Biopsies should be submitted in such a way that their site of origin can be determined, for example, using multiple specimen containers, acetate strips, or multiwell cassettes.^{5 8}

Diagnostic categories

The main questions asked by the histopathologist when assessing an initial biopsy for IBD are (as suggested previously)¹:

- ▶ Is the mucosa inflamed?
- ▶ If the mucosa is inflamed: is it IBD or not?
- ▶ If it is IBD: is it UC, CD, or IBD unclassified?

The term 'indeterminate colitis' is not used for biopsy reporting (see section on Terminology).

Probability

It may be convenient to consider categories of probability, for example, definite/very likely and favoured. This is discussed in more detail in the sections on Terminology and Reporting scheme for IBD biopsies (PAID) and outlined in figure 1.

Recommendations: clinical considerations

- ▶ Accurate histopathological assessment is important for optimum diagnosis, subclassification and management of IBD.
- ▶ Biopsies for the diagnosis of IBD should be accompanied by a full clinical history and a record of endoscopic findings (EL2a RGB).^{3 13} The history should include the duration of disease and details of medical and surgical treatment.³
- ▶ A regular clinicopathological meeting for discussion of IBD cases should be available.

FEATURES OF NORMAL AND ABNORMAL MUCOSA

Normal mucosa

Chronic inflammatory cell density

When assessing chronic inflammatory cells, plasma cells are easier to identify than lymphocytes (EL5 RGD).^{5 18} Normally, chronic inflammatory cells are most dense in the upper third of the mucosa. Their density decreases towards the base, resulting in the 'plasma cell gradient' (figure 2A).^{15 19}

The density and distribution of chronic inflammatory cells varies with anatomical site.¹⁵ Cellularity is highest in the caecum/ascending colon (figure 2B) and may be low in the rectum (EL5 RGD).^{15 19} Absence of the plasma cell gradient is accepted as normal in the caecum and ascending colon (figure 2B) (EL5 RGD). Dense lymphoid tissue may be found in the normal large bowel, particularly in the rectum (EL5 RGD).²⁰

Histiocytes/macrophages

Recognition of histiocytes is difficult unless they contain pigment or mucin (muciphages)^{19 21} or form aggregates. Muciphages are a normal finding and are more common in the

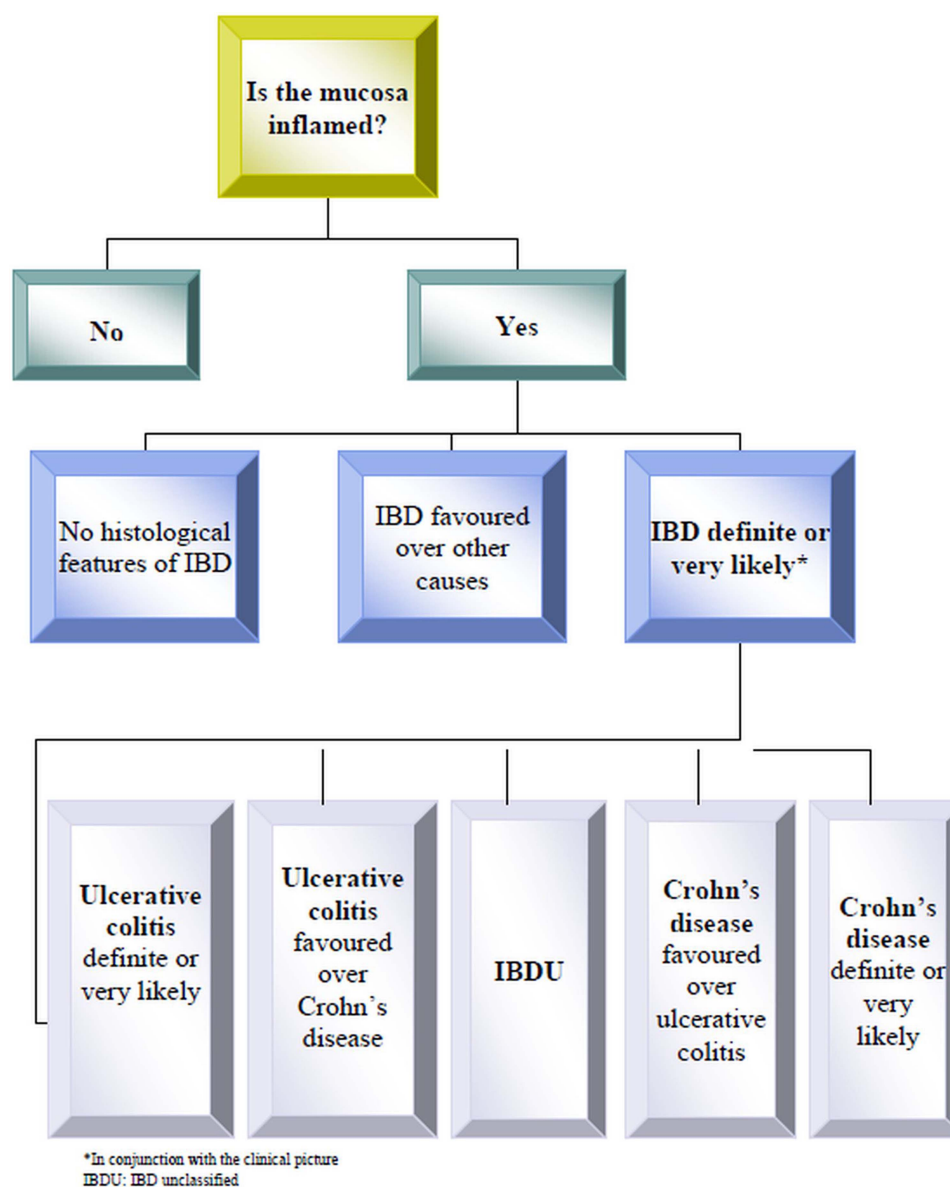


Figure 1 Categorisation of inflammation in biopsies taken for the initial diagnosis of inflammatory bowel disease. This is a simplified outline of the steps. In practice, the process is more complex and also considers the clinical and endoscopic features. All cases are categorised in conjunction with the clinical and endoscopic picture.

rectum than elsewhere (EL5 RGD). They are of no diagnostic significance. However, they can resemble the cells seen in other conditions, such as atypical mycobacterial infection and Whipple's disease, which should be excluded if appropriate.²²

Eosinophils

The normal lamina propria contains eosinophils. There are few definitions of the criteria for normality or for a significant increase.²³ Furthermore, assessment of their density or numbers is of limited value¹¹ despite earlier reports to the contrary. Sparse eosinophils may be seen in the normal surface epithelium.¹⁹

Acute inflammatory cells

A few intraepithelial neutrophils (eg, two or three per biopsy) may reflect bowel preparation (EL5 RGD).¹ Nevertheless, the presence of any intraepithelial neutrophils is probably not normal and should trigger a search for other evidence of inflammation.¹⁹

Crypt architecture

Normal crypts in a perfectly orientated biopsy are parallel to one another and extend from the surface to the muscularis mucosae (figure 2A). Imperfect orientation can produce a false impression of crypt distortion or shortening (EL5 RGD). Occasional branched crypts can be ignored (figure 2C),¹ particularly at innominate grooves.¹⁹ The rectal mucosa may show more irregularity and shortening of crypts, especially near the anorectal junction. Also, the mucosa up to a distance of three crypts from a lymphoid aggregate is not entirely reliable for assessment of architecture.

Changes that may be related to bowel preparation or biopsy

Procedure-related changes include pseudolipomatosis, sparse acute inflammatory cells, mucin depletion, damage to the surface epithelium, mild haemorrhage, basal crypt epithelial cell apoptosis²⁴ and oedema.¹⁹

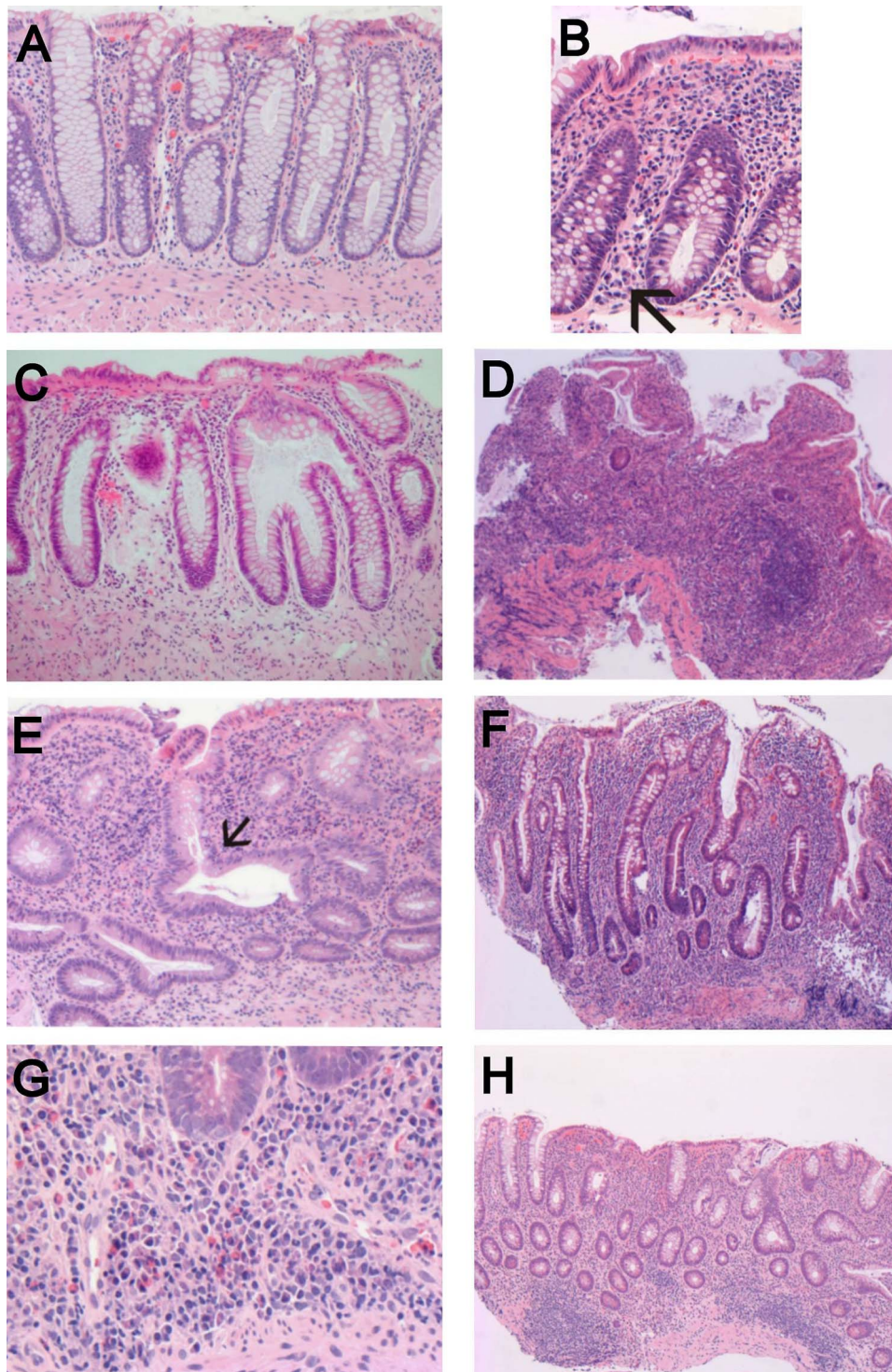


Figure 2 (A) Normal large bowel mucosa with a decrease in plasma cell density from the upper third of the lamina propria to the lower third—the ‘plasma cell gradient’. Basal plasma cells are infrequent or absent. Note also that crypt architecture is preserved; the crypts are parallel to each other and extend from the luminal surface to the muscularis mucosae. (B) In the caecum and ascending colon, overall lamina propria cell density is higher than elsewhere. Basal plasma cells may be seen at these sites (arrow) and should not necessarily be interpreted as chronic inflammation. (C) Occasional branched crypts, as in this biopsy, are acceptable if unaccompanied by any other abnormality. However, they should prompt a search for other evidence of inflammation. (D) An irregular or villiform mucosal surface in the large bowel is abnormal and is a useful marker for inflammatory bowel disease (IBD). It is more prevalent in ulcerative colitis than in Crohn’s disease. Severe diffuse crypt atrophy and diffuse chronic inflammation are also apparent in this case of ulcerative colitis. (E) Crypt architectural distortion. Crypt distortion includes crypt branching and loss of parallelism. The centrally placed crypt shows ‘horizontal’ branching (arrow). (F) Mild crypt distortion, including ‘vertical’ crypt branching. The diagnosis of IBD is lent additional support by a ‘transmucosal’ lamina propria chronic inflammatory infiltrate with loss of the plasma cell gradient and by the presence of crypt atrophy (which is mild). (G) Basal plasmacytosis (plasma cells at the base of the mucosa) is a very useful objective marker for IBD if there is doubt about the presence of chronic inflammation. Some of the plasma cells lie beneath shortened crypts—‘crypts with their feet in pools of plasma cells’.⁴ Other inflammatory cells are present, but plasma cells are the easiest to detect. (H) Basal lymphoid aggregates may be seen in IBD mucosa. They can be difficult to distinguish from normal lymphoid aggregates.

Table 1 Definitions of some histological features

Feature	Figures	Definition/description	Additional comments	References
Villiform/irregular mucosal surface	2D	Undulating or broadly villiform surface. Wide crypt mouths	Separation of crypts yielding surface contour of broad villus-like projections	3 4
Crypt distortion	2D–F	May include branching, loss of parallelism, irregularity, tortuosity, dilatation and variation in shape and size	Caution adjacent to crypt abscesses and lymphoid aggregates/follicles. Anal transition zone/columnar cuff unsuitable for assessment	3 18 19 25 28 31–33
Crypt branching	2E,F	Two or more branched crypts in a well-oriented biopsy. Included in crypt distortion	Branching between mucosal hillocks/at innominate grooves is normal	11 18 19 25 28 34
Crypt atrophy	2D	Minimum: crypt shortening, with increased gap between crypt base and muscularis mucosae. Additional evidence: wider spacing of crypts; >1 crypt diameter between crypts	Caution near lymphoid follicles and near muciphages. Anal transition zone/columnar cuff unsuitable for assessment. Intercrypt/subcryptal spaces may be higher in caecum and rectum	1 3 11 18 21 25 28 33
Basal plasmacytosis	2G	Plasma cells at base of mucosa. May separate crypts from muscularis mucosae but not always subcryptal. Loss of plasma cell gradient	Basal plasma cells are normal in the caecum and ascending colon	3 4 18 28
Basal lymphoid aggregates	2H	Nodular collections of lymphocytes with or without germinal centres. May be between muscularis mucosae and crypts	One or two transmucosal lymphoid nodules can be seen in normal mucosa; can extend across muscularis mucosae. Pathological aggregate may be difficult to distinguish from normal	3 18 19 25
Cryptitis		Neutrophils in crypt epithelium		18 28 31
Crypt abscess		Neutrophils in crypt lumen	Often located near base of crypt	18 28 31 34
Granulomas	3A	Discrete collection of at least five epithelioid macrophages	Consider crypt rupture as a cause. Serial sections may help with this	11 18 25
Mucin depletion	2D,F	Unequivocal reduction of goblet cell mucin in crypt epithelium	Mucin in normal mucosa may be reduced near lymphoid follicles. Depletion can reflect bowel preparation	11 19 21 35
Paneth cell metaplasia	3B	Pyramidal crypt epithelial cells with supranuclear eosinophilic granular cytoplasm	Normal in caecum and right colon, probably as far as splenic flexure	19 25

Microscopic abnormalities

Definitions

Published definitions of microscopic abnormalities are not always consistent. A summary of some definitions is given in table 1.^{1 5 25–27}

Categories of abnormality in colorectal biopsies

Three main categories of colorectal mucosal histological abnormality may be considered (as discussed in previous guidelines).^{1 3}

- ▶ Architectural; for example, crypt distortion, crypt atrophy, surface irregularity (figure 2D–F).
- ▶ Inflammatory; for example, lamina propria chronic inflammation, granulomas, neutrophils.
- ▶ Epithelial; for example, mucin depletion, Paneth cell metaplasia.

Crypt distortion

This category encompasses various terms (table 1) (figure 2E, F).^{5 28} Crypt branching may be the easiest to define and recognise. Branching has occasionally been subclassified as vertical and horizontal⁴ but this may be difficult to apply (figure 2F). In most examples of crypt distortion the ‘test-tube’ arrangement of normal crypts is at least partly lost, that is, there is ‘loss of parallelism’ (figure 2E,F).

Crypt atrophy

Crypt atrophy (figure 2D) encompasses crypt shortening and wider crypt spacing. It is closely related to crypt architectural changes. However, its inclusion under the heading of architectural distortion is not recommended (EL5 RGD).

Chronic inflammation and lymphoid aggregates

Basal plasmacytosis and ‘loss of the plasma cell gradient’ are objective markers of IBD (figure 2D,F,G) (table 1).⁴ Attempts to define numbers²¹ have not been widely accepted. A transmucosal increase in lymphocytes is also likely to be significant but is difficult to confirm objectively. Basal lymphoid aggregates can be difficult to distinguish from normal lymphoid aggregates (figure 2H).

Granulomas and giant cells

It has been suggested that a granuloma should include at least five epithelioid macrophages (EL5 RGD).²⁵ Crypt rupture should be excluded (figure 3A) (EL4 RGC) (see section on Ulcerative colitis vs Crohn’s disease: histology).²⁹ Multinucleate giant cells (not necessarily part of a granuloma) may be diagnostically useful but can also reflect crypt rupture.

Mucin depletion

Normal mucosa contains abundant mucin as droplets in goblet cells. This is usually less plentiful in the surface than in the crypt epithelium (figure 2A). Depletion can be graded as mild, moderate, or severe, but this is subjective (figure 2D,F).

Paneth cell metaplasia

Paneth cell metaplasia (figure 3B) is probably only significant if it is distal to the splenic flexure (EL3b RGC)³⁰ and, additionally, is probably a marker of longstanding disease rather than a reliable discriminant feature.^{3 25}

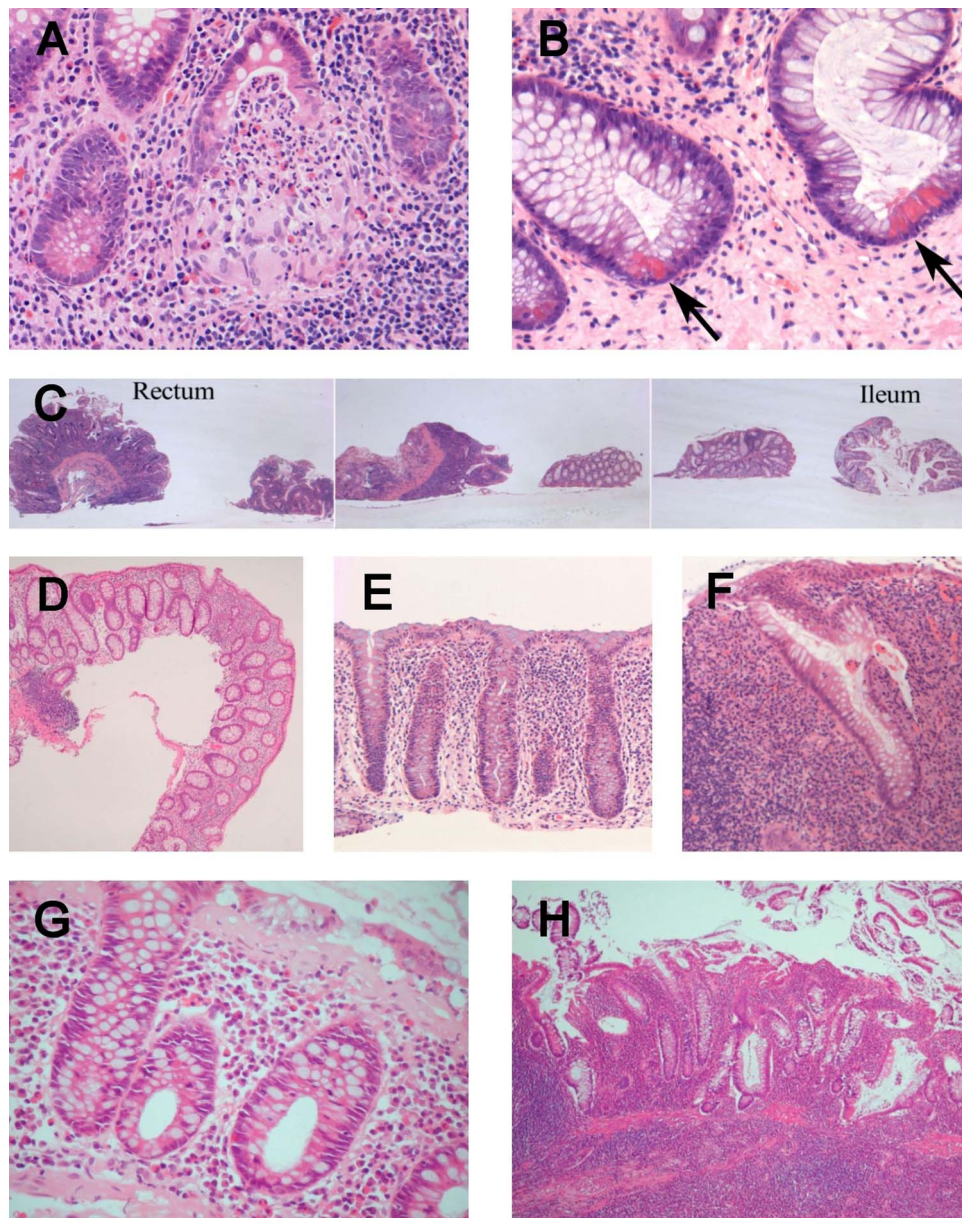


Figure 3 (A) A cryptolytic granuloma resulting from rupture of a crypt abscess. Cryptolytic granulomas are not discriminatory. (B) Paneth cell metaplasia (arrows) with supranuclear eosinophilic granules. This is a case of longstanding ulcerative colitis. (C) Distribution within and between sites. The ileum (far right) and adjacent more proximal colonic biopsies are not inflamed, while the three most distal (left-sided) biopsies show chronic inflammation, crypt distortion and crypt atrophy which are continuous between sites and diffuse within each biopsy. This is virtually diagnostic of ulcerative colitis (assuming the appropriate clinical setting). (D) Distribution of changes within a biopsy: patchy chronic inflammation in Crohn's colitis. Note the variation in lamina propria cellularity and very focal crypt distortion. (E) Probable infective colitis. There is upper lamina propria hypercellularity but no basal plasmacytosis or loss of the plasma cell gradient. Cryptitis is unusually extensive for an infective colitis. (F) Diversion proctocolitis showing diffuse chronic inflammation and crypt distortion. This inflammatory bowel disease (IBD)-like pattern can be seen whether or not there is a past history of IBD, but tends to be most severe in the setting of ulcerative colitis. (G) Collagenous colitis. Basal plasma cells and loss of the usual plasma cell gradient might raise the possibility of IBD, but the correct diagnosis is indicated by the presence of a thickened subepithelial collagen band, epithelial degenerative changes and preserved crypt architecture. Lymphocytic colitis might pose similar problems. (H) Diverticular colitis showing features reminiscent of ulcerative colitis, including diffuse chronic inflammation and extensive crypt distortion. This is a relatively common mimic of IBD in biopsy diagnosis.

Recommendations: features of normal and abnormal mucosa
 ► Pathologists should be familiar with the features of normal mucosa and with definitions of the abnormalities that are encountered in IBD biopsies.

DISTRIBUTION, EXTENT AND ACTIVITY

Distribution of disease

Assessment of distribution

It is useful to assess the distribution of chronic inflammation and crypt changes

- ▶ between anatomical sites
- ▶ between biopsies from the same site
- ▶ within biopsies.

The distribution of acute inflammation should also be noted.

Terms for distribution within biopsies and within a single site

The terms diffuse, patchy and focal are used for chronic inflammation. The terms diffuse and focal are also used to describe crypt changes and acute inflammation (although the latter has less value for disease categorisation). The boundary between 'focal' and 'patchy' is not well defined. Suggested definitions include:

- ▶ Diffuse chronic inflammation: an overall increase in chronic inflammatory cell density throughout the biopsy/biopsies (figures 2D,F and 3C).³
- ▶ Patchy chronic inflammation: areas of increased chronic inflammatory cell density in a background of variable cellularity (figure 3D).³
- ▶ Focal chronic inflammation: well circumscribed foci of increased chronic inflammatory cell density in a normocellular background.³

Terms for the distribution between sites

The terms listed above for a single site are sometimes also used to describe distribution between anatomical sites. This can cause confusion. The alternative terms 'continuous between sites', 'discontinuous between sites' or 'segmental' (ie, non-continuous anatomically)²¹ are preferable.

Diagnostic value of distribution in untreated disease

Assessment of the distribution of changes between sites, within sites, and within biopsies is very helpful for distinguishing UC from CD.³⁶ As a result of the increased use of full colonoscopy there are more opportunities to observe distribution between sites than there were in the past. There is strong evidence that IBD is classified more accurately by multiple site sampling than by limited site sampling (EL1b RGA).^{5 14 21 34 36 37}

- ▶ Distribution between sites: continuous involvement favours UC while discontinuous/segmental abnormalities favour CD (figure 3C) (EL2a RGB).^{21 36} However, well-recognised exceptions exist (table 2).
- ▶ Distribution within sites or within biopsies: diffuse involvement favours UC while focal or patchy changes favour CD (EL2b RGB) (figure 3C,D).
- ▶ An increase in severity from proximal to distal favours UC, while right-sided predominance favours CD (EL5 RGD).^{3 36}

- ▶ Treatment and duration of disease can modify the distribution (see below).

Analysis of distribution between sites also helps distinguish IBD from some other colitides, for example, diverticular colitis (typically confined to the sigmoid colon), infective colitis (may involve all sites, but varies according to the infective agent), and ischaemic colitis (often localised, eg, to the splenic flexure).

Exceptions: discontinuous change in UC

Although UC is typically continuous between anatomical sites, there are various exceptions to the rules (table 2).

- ▶ The caecum may show changes reminiscent of UC despite an uninvolved adjacent colon (caecal patch). Also, there may be apparent rectal sparing endoscopically or in biopsies (though not in resections) (EL1a RGA).^{28 31 38–40} These phenomena do not change the diagnosis but should lower the threshold for considering CD.³
- ▶ 'Appendiceal UC' may be discontinuous with colonic disease ('skip' lesion).^{39 41–44}
- ▶ Longstanding and/or treated UC may be distributed unevenly between sites, within sites, and within biopsies.

Extent of disease

Extent of IBD is mainly determined endoscopically. The extent of UC helps predict the risk of dysplasia.⁷ The extent of CD is more difficult to define.⁵ Histological extent does not always correlate with endoscopic extent,^{5 39} but its documentation may be useful to clinicians.

Activity

Inflammation in IBD biopsies may be classified as chronic, active chronic, or active (acute).⁴⁸ Histological confirmation of activity requires cryptitis, crypt abscesses, surface epithelial neutrophils, erosion, or ulceration. Lamina propria neutrophils may be seen in IBD, but their presence is not usually regarded as a criterion for histological activity.^{45 49–51} There is no widely agreed scheme for grading histological activity in IBD,³ but several have been proposed^{40 52–54} and have been taken into account in the scheme suggested in the section entitled 'Reporting scheme for IBD biopsies (PAID)' later in this document.

The assessment of activity is often based on endoscopy.¹² The value of histological estimation of activity is uncertain⁵ and has not been compared to the value of endoscopic measures of activity. However, its use has increasingly been recommended to help stratify patients into risk categories for cancer screening,¹² and to determine completeness of remission following

Table 2 Discontinuous changes in ulcerative colitis

Circumstance	Feature	Comment	References
New or longstanding ulcerative colitis	Caecal 'patch' (EL1a RGA)	No disease in adjacent colon. Changes resemble those seen distally Patch may also involve ascending colon Consider the possibility of Crohn's disease	39 41–45
	Rectal sparing (EL1a RGA)	Consider the possibility of Crohn's disease	3 28 38–40
	Appendiceal 'ulcerative colitis' (EL1a RGA)	Not uncommon Changes may resemble colorectal features Not seen in biopsies	
Fulminant ulcerative colitis	Can be segmental (EL1a RGA)	Discontinuous between sites	11 17 39 45–47
Longstanding ulcerative colitis	Discontinuous or patchy distribution of inflammation and crypt abnormalities	Variability between and within sites Therapy may be partly or wholly responsible	3 17 42 45

treatment.^{55–57} Comparisons between endoscopic and histological activity may be limited by sampling error.^{5 40}

Recommendations: distribution, extent and activity

- ▶ Distribution of microscopic changes within biopsies, between biopsies and between sites should be assessed (EL1b-2b RGB).
- ▶ The terms 'diffuse', 'patchy' and 'focal' can be used for distribution within sites.
- ▶ The terms 'continuous between sites' and 'discontinuous between sites' (or its synonym 'segmental') can be used for distribution between sites.
- ▶ There are several exceptions to the typical continuous distribution of UC, even at initial presentation, (EL1a RGA) that should not necessarily prompt a change of diagnosis. These include a caecal patch and rectal sparing.
- ▶ Histological activity in IBD should be graded,³ while recognising the limitations of this assessment (EL5 RGD).

IBD VERSUS NON-IBD: HISTOLOGY

IBD versus normal

Some studies list the features that are more frequent in IBD than in normal mucosa, for example, abnormal crypt architecture, crypt distortion, crypt atrophy, basal plasmacytosis, lamina propria hypercellularity, mucin depletion, granulomas, crypt abscesses, cryptitis and ulceration.^{11 34 50} However, these changes can also occur in other types of colorectal inflammation. Therefore, comparisons between IBD and other colitides, and especially infective colitis, are much more useful than comparisons with normal. It is also worth noting that normal histology does not exclude a clinicopathological diagnosis of IBD, especially in early disease or longstanding disease.

IBD versus acute infective colitis/acute self-limiting colitis/non-IBD colitis

Features favouring IBD over acute infective colitis/non-IBD

Comparisons in most reports are with acute infective colitis, acute infective-type colitis or acute self-limiting colitis, that is, diarrhoea (which may be bloody) and associated symptoms, lasting for a short time (eg, less than 1 month), not relapsing, and usually either demonstrably or presumably secondary to common infections such as *Campylobacter*, *Salmonella*, and *Shigella*.^{1 4 25 58} The main reason is that this is the closest clinical mimic of newly presenting IBD. Certain infections, for example, *Clostridium difficile*,¹ HIV-related infections, tuberculosis (TB), amoebiasis and schistosomiasis have distinctive histological features and are generally excluded from these comparisons.

The observed discriminant value depends partly on the proportion of UC and CD cases in the IBD group in each study. Many of the features distinguishing IBD from infective or acute self-limiting colitis also distinguish IBD colitis from other types of non-IBD colitis.

The features favouring IBD over acute infective colitis are outlined in table 3. It is essential to take the clinical details into account at all times.

Features favouring infective colitis over IBD

In infective colitis it is common to see acute inflammatory changes, for example, cryptitis, crypt abscesses, lamina propria neutrophils and oedema, especially in the early phase (up to 2 weeks).¹ In one study, acute infective-type diarrhoea biopsied 1–10 weeks after onset typically showed mild lamina propria hypercellularity, mainly in the upper two-thirds of the mucosa, with a slight increase in lamina propria and crypt epithelial neutrophils.⁵⁸ However, distinction from IBD relies mainly on the absence of features of IBD rather than on positive features

Table 3 Features favouring IBD over acute infective colitis/acute self-limiting colitis

Reliability	Feature	Figures	Comments	EL	References
1. Highly reliable	Basal plasmacytosis	2G	Strongest predictor of IBD Highly consistent between studies May be focal or diffuse Basal plasma cells are normal in caecum/ascending colon	EL1a RGA	4 18 32
	Crypt distortion/crypt branching/abnormal crypt architecture	2E,F	Highly consistent between studies Some interobserver variability	EL1a RGA	1 4 18 25 26 32 33 58
	Crypt atrophy	2D	<5 crypts per mm unique to IBD in one study Some interobserver variability	EL1a RGA	1 4 18 25 33 58
	Irregular/villous mucosal surface	2D	Some interobserver variability	EL1a RGA	1 4 18 25 26 33
2. Fairly reliable	Granulomas	3A	Exclude cryptolytic granulomas; only valid for Crohn's disease; infective vs ulcerative colitis: not discriminant	EL1a RGA	4 18 25 26 33
	Basal giant cells		Not assessed in some studies	EL1b RGB	25 26 33
	Basal lymphoid aggregates	2H	Can be difficult to distinguish from normal lymphoid aggregates	EL1b RGB	18 25 26 33 58
3. Less reliable	Lamina propria chronic inflammation/hypercellularity		Variably defined; some overlap with the more precise terms above Low reproducibility	EL1b RGD	26 33 58
	Paneth cell metaplasia (NOS/distal to the splenic flexure)	3B	Weak association in some studies Utility may be restricted to longstanding disease Some interobserver variability	EL1b RGD	4 21 26 30
4. Limited data	Deep (rather than superficial) crypt abscesses			EL2b RGC	25
	Variation in crypt diameter			EL2b RGC	4
	High counts of crypt intraepithelial neutrophils/crypt luminal neutrophils		>10 per crypt or per crypt lumen, assessed in 10 crypts	EL2b RGC	58

EL, evidence levels; IBD, inflammatory bowel disease; NOS, not otherwise specified.

Table 4 Features favouring infective colitis over IBD

Reliability	Feature	EL	References
Reliable	Absence of features of IBD	EL1a RGA	1 25 26 33 58
	Preservation of normal crypt architecture		1 25 32
	No crypt branching		18
	Parallel crypts		4
	Absence of basal plasmacytosis		32
Less reliable/limited data	Inflammation in upper half of lamina propria/increased cellularity of upper two-thirds of mucosa	EL1b RGD	4 58
	Acute inflammation (rather than chronic/mixed inflammation) of the lamina propria		18
	Superficial (rather than basal) giant cells		25
	Superficial (rather than deep) crypt abscesses		25
	Cystic crypt abscesses		25

EL, evidence levels; IBD, inflammatory bowel disease.

of infection (table 4) (figure 3E).^{1 25 26 36 58} It is often more appropriate to suggest the diagnosis of infection than to make a definite statement.¹

IBD versus infective colitis: exceptions

There are several exceptions to the usual picture.

- ▶ Crypt distortion occurs in a minority of infective colitides,^{18 26 33 59} particularly in the healing phase or if infection is severe or prolonged.^{4 11 59}
- ▶ A few infective colitis biopsies have basal plasmacytosis or other evidence of chronic inflammation.^{4 18 26}
- ▶ Crypt abnormalities may be absent from IBD biopsies, especially in early or treated disease.^{3 4 33 60}
- ▶ Some IBD biopsies have little or no basal plasmacytosis/chronic inflammation, particularly early in the course of disease or after treatment.^{3 18 26}

Recommendations: IBD versus infection/non-IBD

- ▶ The microscopic features that favour IBD over infective colitis include basal plasmacytosis and architectural changes (EL1a RGA).
- ▶ Combinations of changes are more useful than single features.
- ▶ Correlation with the clinical picture is essential.

UC VERSUS CD: HISTOLOGY

Considerations

Even when a diagnosis of IBD is made confidently or favoured over other causes, further classification as UC or CD can be

difficult. However, the distinction is very important for medical and surgical management. In particular, pouch surgery may be offered to patients with UC but is generally regarded as unsuitable for those with CD as they have a high risk of pouch failure.^{6 46 61} Accordingly, every effort to distinguish between these two forms of IBD should be made, especially in initial biopsies.¹⁵ Also, subclassification of IBD should be based on a combination of histological and clinical findings and not on microscopic changes alone.

Histological features which help discriminate UC from CD are outlined in tables 5 and 6.

Granulomas

Granulomas unrelated to crypt injury (non-cryptolytic granulomas) are very reliable for distinguishing CD from UC in a patient with new or established IBD, and are consistently more discriminant than any other single feature.^{5 30 63 65 66} However, they also occur in TB and, rarely, in other infective colitides.^{5 18} They are not, in isolation, diagnostic of CD. Granulomas in CD show no necrosis.⁵

Cryptolytic granulomas occur as a response to crypt injury and have been described in most colitides (including UC,^{5 29} infective colitis,²⁶ diverticular colitis and diversion colitis) (figure 3A).⁶⁷ Although there has been some dissent, they are generally regarded as non-discriminatory.^{29 67} Accordingly, crypt rupture should be excluded as a cause of granulomas, particularly if the evidence for CD is otherwise weak. Serial sections help define the relationship between granulomas and ruptured crypts (figure 3A) (EL5 RGD).¹⁸

Table 5 Features favouring ulcerative colitis over Crohn's disease

Reliability/discriminant value	Feature	Figures	Evidence level	References
1. Reliable	Diffuse crypt abnormalities within and between sites	3C	EL1a RGA	13 18 36
	Diffuse crypt abnormalities within a site		EL1b RGB	18
	Crypt atrophy	2D	EL1a RGA	11 25 34 36 50 62
	Abnormal crypt architecture		EL1a RGA	11 25 63
	Villous or irregular mucosal surface		EL1a RGA	11 25
	Mucin depletion		EL1a RGA	3 11 36 63
	Absence of ileal inflammation	3C	EL1b RGB	64
2. Reliable in some studies, but variably defined	Diffuse transmucosal chronic inflammation/diffuse inflammation/heavy diffuse transmucosal lamina propria infiltrate/transmucosal lamina propria hypercellularity	2F	EL1b RGA	3 11 36 50
	3. Less evidence		Widespread cryptitis/general crypt epithelial polymorphs'	EL1b RGD
The following more prevalent distally than proximally: diffuse transmucosal inflammation; diffuse crypt changes; focal crypt changes			EL2b RGC	36

Table 6 Features favouring Crohn's disease over ulcerative colitis

Reliability/discriminant value	Feature	Figure	Evidence level	References
1. Reliable	Granuloma (non-cryptolytic)		EL1a RGA	11 25 36 63
	Focal or patchy lamina propria chronic inflammation (rather than continuous/diffuse)		EL1a RGA	5 11 18 36
	Focal or segmental crypt distortion (rather than continuous/diffuse)	3C	EL1a RGA	5 21 36
	Ileal involvement		EL1b RGB	5 64
–	Absence of features of ulcerative colitis			5
2. Fairly reliable	Decreasing proximal to distal gradient of changes		EL1b RGB	36
3. Limited or conflicting evidence*	Disproportionate submucosal inflammation		EL5 RGD	5
	Focal crypt abscesses		EL5 RGD	34
	Focal cryptitis		EL5 RGD	5
4. Limited evidence from non-initial studies	Normal mucosal surface		NA	34
	Segmental crypt atrophy		NA	21
	Segmental mucin depletion		NA	21

*The evidence for these is conflicting or sparse. Focal cryptitis, in particular, can be seen in many other situations, including ulcerative colitis and infection.

Recommendations: subclassification of IBD and assessment of granulomas

- ▶ The microscopic features that help distinguish UC and CD from one another include granulomas, architectural changes and distribution of disease (EL1a RGA).
- ▶ Non-cryptolytic granulomas are more useful than any other feature for discriminating between CD and UC (EL1a RGA).
- ▶ Cryptolytic granulomas occur in many colitides and probably have little or no discriminant value (EL4 RGC).
- ▶ Isolated granulomas may merit serial sections to help define their relationship with ruptured crypts (EL5 RGD).
- ▶ If granuloma formation is the sole abnormality, cautious interpretation is advised (EL5 RGD).

ASSIGNMENT TO A CATEGORY: FURTHER CONSIDERATIONS AND SUMMARY

No histological feature is diagnostic of IBD or of a type of IBD. Instead, features are found to be more prevalent in one disease group than in another.

Diagnostic accuracy is optimised if several features rather than a single feature are assessed, if the distribution of changes is also analysed, and if the clinical details are considered. For example, a combination of diffuse architectural distortion, villous surface, crypt atrophy and basal plasmacytosis, especially if continuously distributed within and between sites, is essentially diagnostic of UC in the appropriate clinical setting,³ while segmental involvement of multiple site biopsies together with variable chronic inflammation and crypt changes within

Table 7 Some features which may be useful for initial diagnosis and classification of IBD

Feature	IBD>infective	Infective>IBD	UC>CD	CD>UC
Architecture				
Preserved architecture		+++		+
Crypt distortion	+++		++	
Crypt atrophy	+++		++	
Diffuse intersite or intrasite crypt changes (in IBD)			+++	
Non-diffuse crypt changes (in IBD)				+
Irregular mucosal surface	+++		++	
Inflammation				
Basal plasmacytosis	+++			
Lymphoid aggregates	++			
Diffuse intersite or intrasite CI (in IBD)			+++	
Non-diffuse/focal CI (in IBD)				++
Inflammation upper LP		+		
Granulomas (non-cryptolytic)	++			++++
LP acute inflammation (no CI)		+		
Widespread cryptitis (in IBD)			+	
Other changes				
Mucin depletion			++	
Paneth cell metaplasia	+			
Ileal inflammation (in IBD)				++

++++, very strongly discriminant; +++, highly discriminant; ++, moderately discriminant; +, weakly discriminant; CD: Crohn's disease; CI: chronic inflammation; IBD, inflammatory bowel disease; LP: lamina propria; UC: ulcerative colitis.

Table 8 Reported frequencies of histological features in initial biopsies (%)

Feature	Normal	Infective	IBD	UC	CD	UC (p)	References
Architecture							
Normal crypt architecture	100	85	8	6–10		34	18 28 34 63
Parallel crypts		87	53				4
Irregular/villous surface	0	0–7	11–27	30–50	12	32	4 11 18 25 26 28 33 34
Crypt architectural distortion		0–30	28–100	57–89	27–32	66	4 18 25 26 28 32 33 63
Crypt branching	0–5	10	79	47–63	39	28	11 18 28 34
Vertical crypt branching		0	24				4
Horizontal crypt branching		55	82				4
Crypt dilatation	8–14	53	80	57	42		4 11 34
Crypt atrophy		0–15	10–33	29–66	12–23	38	4 11 18 25 28 33
Epithelium							
Mucin depletion	17	70	92	67–69	29–57		11 18 63
Paneth cell metaplasia	6	0	4–15	16–19	4	9	4 11 26 28
Chronic inflammation							
Basal plasmacytosis	0	0–6	69–100	76		58	4 18 28 32 34
Basal lymphoid aggregates		0–7	18–35	21–60	8	64	18 25 26 28 33
Mixed LP inflammation		0–31	38–94	27	27		18 25
Superficial hypercellularity		28	10				4
Granuloma	0	0–2	6–27		21–62		4 11 18 25 26 33 34 63
Giant cells	0	2	25	1	11		11 18
Basal giant cells		0–2	1–16				25 26 33
Superficial giant cells		16	3	3	0		25
Neutrophils							
Lamina propria neutrophils	6	47–86	0–73	61–63	55–61		4 11 18 25 63
Crypt abscesses	0	47–54	75–90	41–66	19	53	18 25 28 34 63
Cryptitis	0			8–64	52	81	28 34 63
Ulceration/luminal pus	0	0		31–40	24–25		11 34 63
Surface erosions		9–76	24–93	37	7		25 32 33

CD: Crohn's disease; IBD, inflammatory bowel disease; LP, lamina propria; UC, ulcerative colitis; UC (p), paediatric ulcerative colitis.

sites accompanied by non-cryptolytic granulomas is virtually diagnostic of CD.

A minimum number of histological features required for a particular diagnosis is not definable.^{3 36}

Severity of changes may also be important. For example, severe crypt changes are more characteristic of UC than of CD while mild crypt changes are less discriminant. However, published data is sparse.

Features typically used to distinguish IBD from non-IBD/infective colitis and to distinguish UC from CD when examining an initial biopsy are summarised in table 7.

Recommendations: assignment to a category on the basis of histology

- ▶ No histological feature is diagnostic in isolation of IBD or of a subtype of IBD. Instead, certain features are more prevalent in one disease group than in another.
- ▶ Diagnostic accuracy is optimised if multiple features are assessed together, if the intersite and intrasite distribution of changes is also analysed, and if the clinical details are taken into account.

FREQUENCY AND REPRODUCIBILITY

Frequency

Pathologists should be aware of the frequency of various features in different settings and should also bear in mind

the reproducibility of each feature. The published prevalence of each histological feature in various settings is shown in table 8.

Interobserver agreement and reproducibility

Interobserver variability is often high, both for the presence of abnormal features and for disease classification.¹¹

Agreement for individual histological features

Compared with most other features, there is consistently good interobserver agreement for identification of granulomas and giant cells (table 9). There is also good agreement for the presence of basal plasmacytosis and for distinguishing focal from diffuse chronic inflammation. There is more variability in the assessment of architecture, mucin depletion and Paneth cell metaplasia.^{11 30}

Agreement for category of disease

Histopathologists are better at distinguishing IBD from non-IBD than distinguishing UC from CD (EL2b RGB).^{11 50 68} Also, agreement for diagnosing UC is better than for diagnosing CD (EL2b RGB).^{11 36 69} Underdiagnosis of CD by histopathologists is a recognised problem. However, it is likely that the accuracy and confidence of interpretation of IBD biopsies is improved if there is careful correlation with clinical and endoscopic findings (EL2b RGB),^{11 13–15} ideally supplemented by discussion at a regular multidisciplinary meeting (EL5 RGD).

Review

Table 9 Reproducibility of some histological features

Feature	Reproducibility	IOV% ^{11 25 33}	κ ^{11 62 63 68 69}
Architecture			
Normal crypt architecture	Acceptable	–	>0.4
Crypt distortion	Variable	4–25	0.4–0.77
Villous/irregular mucosal surface	Variable	4–19	0.37–<0.4
Crypt atrophy	Variable	6–29	0.27–0.67
Crypt branching	Variable	26	<0.4–0.47
Crypt dilatation	Poor	33	0.31
Epithelium			
Severe mucin depletion	Acceptable	–	>0.4
Mucin depletion	Variable	21	>0.4–0.57
Paneth cell metaplasia	Variable	13	0.36–0.75
Chronic inflammation			
Basal plasmacytosis	Acceptable/good	–	0.53–0.84
Focal vs diffuse chronic inflammation	Acceptable/good	–	0.54–0.87
Normal lamina propria cellularity	Acceptable	17	>0.4
Basal lymphoid aggregates	Acceptable	10–16	0.52
Submucosal inflammation	Acceptable	14	0.44–0.63
Lamina propria lymphocytes/plasma cells	Variable	23–33	0.08–0.68
Eosinophils	Variable	23	0.32–0.51
Histiocytes	Variable/poor	46	0.07–0.6
Granulomas/giant cells			
Granuloma/epithelioid granuloma	Good	4–6	>0.4–1
Giant cells (NOS/Langhans/isolated/basal)	Acceptable/good	3–8	0.45–0.85
Acute/active inflammation			
Crypt neutrophils/crypt abscess/cryptitis	Acceptable	18	>0.4–0.66
Ulceration/surface erosion	Variable	15	<0.4–0.56
Lamina propria neutrophils	Variable	21	>0.4–0.57

Reproducibility is arbitrarily classified as acceptable if κ is >0.4 and IOV <20%. IOV, interobserver variability; NOS, not otherwise specified.

Recommendations: frequency and reproducibility

- ▶ In addition to knowing the discriminant value of each feature, pathologists should be aware of its frequency and reproducibility. This should help optimise the accuracy of interpretation and categorisation.
- ▶ Correlation with clinical findings and discussion at a dedicated clinicopathological meeting should help consensus to be reached if there is initial disagreement.

EFFECTS OF TIME AND TREATMENT**Time-related changes in untreated IBD**

The likelihood of observing various histological features in newly diagnosed IBD changes with the duration of symptoms. Focal basal plasmacytosis, probably the earliest abnormality,⁴ can be seen in the first 15 days of symptoms (table 10). It

becomes more extensive and more prevalent with time (EL1b RGB).⁴ Architectural changes typically develop later. For example, crypt distortion is not seen before 15 days of symptoms but is present in more than 75% of patients after 4 months (table 10) (EL1b RGA).^{4 11 47 60}

Most adult patients present after at least 6 weeks of symptoms.²⁸ Therefore, ‘chronic’ histological features are usually discernible at initial diagnosis.⁴

Treated/longstanding IBD: changes in histology, extent and distribution

Follow-up biopsies may confirm or refine a diagnosis of IBD.³ However, treatment modifies IBD histology. Treatment effect is unpredictable, depends partly on disease duration and initial intensity of inflammation,^{45 47} and cannot be distinguished reliably from chronic time-related changes.

Table 10 Time-related changes in untreated IBD

Time	Histological feature (% of cases)					References
	Basal plasma cells	Crypt distortion	Crypt atrophy	Villous surface	Granuloma	
Duration of symptoms						
1–15 days	38	0	0	0		4
16–30 days	54	23	31	23		4
31–120 days	81	20	43	33		4
121–300 days	89	78	44	33		4
<25 days					0	18

IBD, inflammatory bowel disease.

Basal plasmacytosis may diminish in longstanding/treated disease,³ while crypt changes are more likely to persist.⁴ Paneth cell metaplasia appears to be a feature of longstanding disease. Lamina propria fibrosis may be seen. In some patients, abnormal mucosa reverts to normal.³⁵

Extent and distribution can also vary with time and treatment (EL2a RGB) (see section on Distribution, extent and activity).^{5 39 42} Rectal sparing, discontinuity between sites, and patchy or focal changes within sites are recognised features of longstanding UC and are not sufficient for a change of diagnosis. They may be enhanced by medical therapy (EL2a RGB),^{17 28 39 45 47 70} but the type of medication does not correlate with the prevalence of rectal sparing or discontinuity.^{17 40 65}

Certain drugs have specific effects. 5ASA and topical steroids may be associated with normalisation of mucosa in some patients with UC.⁴⁷ Granulomas may diminish in number after some types of treatment.⁴⁷ Cyclosporine may cause dysplasia-like changes.⁷¹ Recent clinical trials have documented histological changes after treatment with specific agents.^{57 72}

Recommendations: effects of time and treatment

- ▶ Early untreated IBD may show few or no histological changes. There is some correlation between the onset of each abnormality and duration of symptoms. Basal plasmacytosis is the earliest feature. Crypt changes typically appear later (EL1b RGB).
- ▶ Time and treatment may modify the histology, distribution and extent of IBD (EL2a RGB). Longstanding UC not infrequently shows patchiness, discontinuity and/or rectal sparing.
- ▶ Interpretation of biopsies from early or longstanding IBD should be cautious (EL2a RGB).
- ▶ Modification of an established diagnosis of UC or CD should only be made if there is convincing evidence for a change, ideally after review of previous histology and of clinical data in a multidisciplinary setting.³⁹

PAEDIATRIC UC Considerations

UC in children and adults differs slightly (table 11). Children may have a higher prevalence of discontinuous disease, rectal

sparing and pancolitis, and a lower prevalence of 'chronic' histological changes^{28 38 48 73} (possibly because of earlier presentation)²⁸ although not all reports agree that rectal sparing is more common. Discrepancies with adult disease may be greater in those aged <11 years than in those aged 11–17 years.³¹ As in adults, discontinuous disease and absence of crypt changes should not cause UC to be excluded (EL1b RGB).^{3 48} Upper gastrointestinal involvement by IBD appears to be more prevalent in children than in adults (see section on Ileal and upper gastrointestinal biopsies).⁷³

Recommendations: paediatric IBD

- ▶ The histology of paediatric IBD is similar to that of adult disease.
- ▶ Compared with adult disease, the prevalence of 'chronic' changes in paediatric UC may be lower, and the prevalence of patchy/discontinuous changes higher (EL2b RGB).
- ▶ Upper gastrointestinal involvement may be more common in children than in adults.

ILEAL AND UPPER GASTROINTESTINAL BIOPSIES Ileal biopsies in IBD

Occasionally, there is distal terminal ileal inflammation in UC. Despite being attributed to 'backwash', it is not always accompanied by caecal involvement.^{39 52} Villous atrophy, mixed lamina propria inflammation, cryptitis, crypt abscesses and focal erosion may be seen.^{3 52} Non-cryptolytic granulomas are not observed.⁶⁵ Pyloric metaplasia (mucous gland metaplasia) can occur, but is not common.⁵²

Terminal ileal mucosa is abnormal in most patients with CD.⁶⁴ Features include disturbed villous and crypt architecture, focal or patchy inflammation, focal erosions and pyloric metaplasia.^{3 74} Granulomas and giant cells are uncommon but are useful for discriminating Crohn's ileitis from ileal UC.⁶⁴

Recommendations: ileal biopsies in IBD

- ▶ In the setting of IBD, ileal inflammation strongly favours CD over UC (EL1b RGB).⁶⁴
- ▶ Granulomas (non-cryptolytic) in inflamed ileal biopsies help discriminate CD from UC (EL1b RGB).^{64 65 75} Few other features are useful.

Table 11 Differences between adults and children with ulcerative colitis

Age group with higher prevalence	Feature	Additional details	References
Children	Pancolitis/subtotal colitis	Children 42%; adults 11%	48
	Normal architecture/no crypt distortion	0% of adults in one study	28 38 48
	Patchy chronic changes/patchy inflammation	Children>adults; or children only (21%)	38 48
Children/neither	Rectal sparing		28 38 48
Adults	Diffuse continuous disease	Adults 100%; children 68%	48
	Diffuse crypt abnormalities within a biopsy	Adults 58%; children 32%	28
	Crypt atrophy	Adults 67%; children 33%	28
	Severe crypt atrophy	Adults 21%; children 6%	28
	Plasma cells in lamina propria		31
Adults/neither	Cryptitis and crypt abscesses		28 31
	Crypt branching		28 31

Site biopsied: rectal biopsy²⁸; rectosigmoid biopsies³⁸; sigmoidoscopy or colonoscopy.⁴⁸

Upper gastrointestinal biopsies in IBD

Microscopic upper gastrointestinal tract inflammation is quite common in CD⁷⁶ and comparatively rare in UC.⁷⁷ However, upper gastrointestinal involvement by UC may be more common in children than in adults.⁷³

Gastric granulomas occur in 0–83% of CD, depending on study design.^{76–78} Granulomas at any site strongly favour CD over UC. However, they are not diagnostic of CD in isolation, as there are many other possible causes.⁷⁶

Duodenal involvement is not uncommon in CD but is also seen in a few UC patients^{77–79} whose biopsies may show a pattern of diffuse chronic inflammation and crypt changes resembling the colorectal abnormalities.⁷⁷

‘Focally enhanced gastritis’,^{77–80} characterised by a focal mixed perifoveolar/periglandular inflammatory infiltrate with epithelial damage, was first reported as a feature of CD,^{5–75–81} but is not specific,^{5–65–77–82} and can also be seen in UC.^{77–83} *Helicobacter pylori* infection should always be excluded if there is gastric inflammation, even if a patient is known to have IBD.

Oesophageal involvement can be attributed to known CD if there are granulomas. Otherwise, gastro-oesophageal reflux and other causes should be excluded.⁸⁴ Lymphocytic oesophagitis has also been described in Crohn’s patients.⁸⁴ Oesophageal involvement by UC is probably very rare.^{77–78}

Upper gastrointestinal inflammation may raise the possibility of a new diagnosis of CD but is rarely diagnostic in isolation.^{5–76} UC should not be diagnosed on the basis of upper Gastrointestinal (GI) tract abnormalities.⁷⁷

Recommendations: upper gastrointestinal biopsies in IBD

- ▶ Upper gastrointestinal involvement by CD is considerably more frequent than involvement by UC (EL4 RGC).
- ▶ Other more common causes of upper gastrointestinal inflammation, especially gastro-oesophageal reflux and *H pylori*-associated gastritis, should be excluded before involvement by IBD is suggested (EL5 RGD).
- ▶ In the setting of IBD, upper gastrointestinal granulomas strongly favour CD over UC (EL4 RGC).⁷⁸
- ▶ Upper gastrointestinal granulomas may raise the possibility of new CD, but caution is advised (EL5 RGD).

MIMICS OF IBD

Considerations

Several entities can mimic IBD histologically (table 12). The possibility of an alternative cause should be considered, especially when clinical details are limited.

Diversion proctocolitis

After colonic resection, the faecal stream may be diverted. The excluded large bowel may develop diversion proctocolitis (DPC) which can show a variety of histological mucosal abnormalities including patchy or diffuse lamina propria chronic inflammation, prominent lymphoid follicles, crypt distortion, crypt atrophy, and aphthous or non-aphthous ulcers, thus sometimes resembling IBD (figure 3F).^{85–88} The changes can be attributed entirely to diversion if there is no prior history of colorectal inflammatory disease. However, in patients with pre-existing IBD, the features of DPC and IBD overlap and are difficult to separate from one another.

In diverted UC, inflammation is typically severe, while CD mucosa may improve after diversion.⁸⁶ However, histological features in biopsies (and resections) from a diverted segment do not distinguish reliably between UC and CD. For example, granulomas in DPC may be more common when the underlying pathology is CD than when it is UC,⁸⁹ but can also occur in the latter and in other settings.^{87–90}

Microscopic colitis

The term ‘microscopic colitis’ is qualified as collagenous colitis or lymphocytic colitis, if possible.⁹¹ Collagenous colitis is characterised by a thickened subepithelial collagen band (>15 µm)⁹² and a variable, often mild, increase in intraepithelial lymphocytes.⁹³ Lymphocytic colitis requires an increase in intraepithelial lymphocytes (>20 per 100 epithelial cells).⁹⁴ Surface epithelial degeneration and an increase in lamina propria plasma cells occur in both.^{92–95} Very rarely, there are subepithelial multinucleate giant cells.⁹⁶ There is usually no endoscopic abnormality.⁹²

Collagenous and lymphocytic colitis may show basal plasmacytosis (figure 3G), raising the possibility of IBD (EL2b RGC).^{21–93} However, other features of IBD, particularly crypt distortion, are usually absent (EL1a RGA).^{93–97} Conversely, early IBD with mild intraepithelial lymphocytosis and preserved architecture could

Table 12 Histological mimics of IBD

Category	Disease	Comment	Clinical correlation
Close mimics	Diverticular colitis	Usually localised to sigmoid Often older patients	History/endoscopy required for diagnosis
	Diversion proctocolitis	May resemble ulcerative colitis	History required for diagnosis
Other mimics	HIV-related colitis	May resemble Crohn’s disease (patchy colitis) but crypt changes uncommon	History required for diagnosis
	Mucosa over a mass lesion	Rare cause of IBD-like changes Localised to one area	History/imaging required for diagnosis
May share some features	Ischaemia	May show crypt changes	Often localised, eg, splenic flexure
	Radiation colitis	May show crypt changes	History required for diagnosis
	Microscopic colitis	Plasmacytosis, sometimes basal; no crypt changes	Endoscopy normal
	Graft-versus-host disease	Crypt distortion and atrophy Apoptoses in acute Graft versus host disease (GVHD) Chronic GVHD resembles quiescent IBD	History needed for diagnosis
Specific infections	Lymphogranuloma venereum/syphilis	May resemble Crohn’s disease Left-sided more than right	HIV/risk factors
	Tuberculosis	Granulomas	Risk factors

IBD, inflammatory bowel disease.

resemble microscopic colitis.²¹ There are a few reports of a microscopic colitis-type picture in IBD or prior to its onset.^{98 99}

Diverticular colitis

Diverticular colitis (diverticular disease-associated colitis; isolated sigmoiditis) refers to mucosal changes in the segment affected by diverticula, usually the sigmoid colon. In biopsies, lamina propria plasmacytosis, cryptitis and crypt abscesses are usual (figure 3H). Crypt distortion is typically present though not severe. Basal plasmacytosis and Paneth cell metaplasia are also quite common. Villous surface change and non-cryptolytic granulomas are rare.^{27 100}

Histologically, diverticular colitis can resemble IBD closely (EL4 RGC).^{26 27 101} Misdiagnosis as UC is a recognised problem (EL5 RGD).²⁶ Assessment of biopsies from both the sigmoid colon and the rectum is helpful (EL4 RGC).^{27 102} Resemblance to CD can also occur, especially in resections.¹⁰³ Some authors have distinguished 'segmental colitis associated with diverticulosis (SCAD)', which often resembles IBD, from diverticulitis (ie, inflammation extending directly from diverticular mucosa into the adjacent mucosa), and have subcategorised it, for example, crescent fold disease, UC-like, and Crohn's colitis-like.¹⁰⁴ Also, IBD seems particularly likely to develop in diverticular segments in patients who have both IBD and diverticular disease.¹⁰⁵ Accordingly, the relationship between IBD and diverticular disease is not straightforward.

Radiation colitis

Radiation therapy can cause a chronic colitis with crypt atrophy, crypt distortion and mucin depletion, potentially resembling IBD (EL3b RGC).^{21 35 102} Other features, including hyalinisation, fibrosis and vascular ectasia and absence of basal plasma cells, help make the distinction,^{15 21 35} but diagnosis depends on a clinical history.

Ischaemic colitis

Ischaemic colitis may overlap with IBD clinically. Microscopically, chronic ischaemia can cause crypt atrophy and distortion (EL3b RGC).^{21 35 65 102} Basal plasma cells are absent or sparse. Mild acute inflammation, hyalinisation of the lamina propria, and fibrosis are typical.^{15 21} Extensively damaged crypts may be represented by deeply located aggregates of neuroendocrine cells.³⁵ The clinical picture and anatomical distribution help make the distinction from IBD.^{15 35}

Graft-versus-host disease

Acute graft-versus-host disease (GVHD) can cause crypt atrophy and distortion, but chronic inflammation is absent or mild and crypt epithelial cell apoptoses are usual. Chronic GVHD may also result in crypt distortion and atrophy, with or without fibrosis.³⁵ After substantial epithelial loss, endocrine cells may be the only sign of a pre-existing crypt.¹⁰⁶

Mass lesion

The mucosa overlying an intramural or subserosal mass (eg, diverticular disease, carcinoma, endometriosis) may show features reminiscent of IBD, including lamina propria chronic inflammation and crypt distortion.¹⁰⁷ Granulomas are less common (EL2b RGC).¹⁰⁷

Infections

HIV

Colorectal biopsies from HIV-positive patients with chronic diarrhoea often reveal no pathogen but may show mild chronic inflammation, lymphoid aggregates, lymphoid follicles and crypt

epithelial cell apoptoses.¹⁰⁸ The picture can closely resemble IBD, especially CD, but crypt distortion is uncommon.^{35 109} Some cases may be secondary to lymphogranuloma venereum (LGV) (see below).¹¹⁰ The label 'Crohn's disease' is not recommended for HIV-related IBD-like changes.

Lymphogranuloma venereum and syphilis

Chronic LGV-related and syphilitic proctocolitis may be similar to one another histologically and can both resemble IBD, particularly CD.^{110 111} The rectum is most commonly involved and is typically most severely affected, but any part of the colon can be inflamed.^{111 112} Most patients are HIV-positive men who have sex with men.¹¹¹ Histological changes include a prominent lymphohistiocytic and plasma cell infiltrate, fibrosis, relatively mild acute inflammation and minimal basal plasmacytosis or crypt distortion.^{35 111} Granulomas and Paneth cell metaplasia can occur but are not common.^{35 111 113} Reliable distinction from IBD depends on the clinical setting, although the diagnosis is often unsuspected at endoscopy.¹¹¹

Yersinia and TB

Yersinia and TB can elicit granulomas, occasionally cause crypt distortion, and may mimic CD.^{59 114} Caseous necrosis and demonstrable acid fast bacilli indicate TB but are confined to a minority of cases. TB is favoured over IBD by confluent granulomas, numerous granulomas, Langhans giant cells, a lymphoid cuff around granulomas, and granulomas more than 400 µm in diameter.¹¹⁵ Yersinia is favoured over IBD by granulomas with central necrosis, granulomas surrounded by a lymphoid cuff, and stellate abscesses.^{59 114}

Other infections

Amoebic colitis if prolonged can cause crypt distortion but tends to lack other features of IBD.⁵⁹ This and other protozoan infections can coexist with IBD and worsen disease activity.¹¹⁶ Schistosomiasis can elicit granulomas.³⁵ These conditions are obvious if micro-organisms are seen. Chronic infection with *Clostridium difficile* is a recognised cause of crypt architectural changes.⁸⁸ The clinical setting is very important.

Drugs

Drugs should always be considered, especially if a colitis has unusual features. Non-steroidal anti-inflammatory drug (NSAID) colitis has a wide spectrum of presentations and can occasionally cause crypt distortion, IBD-like changes, and even granulomas; clues to the cause include epithelial cell apoptoses and increased intraepithelial lymphocytes.^{101 117} Mycophenolate Mofetil colitis may resemble IBD with crypt architectural changes and chronic inflammation, but more commonly mimics GVHD.¹¹⁸

Other potential mimics of IBD

Mucosal prolapse

Mucosal prolapse may cause distortion of crypts, potentially resembling IBD. Other features of prolapse, such as vertical smooth muscle fibres and 'diamond-shaped' crypts, help make the distinction, while basal plasma cells are not usually present.^{88 119}

Behcet's disease

Behcet's disease rarely involves the colon. It typically causes ulcers and preferentially affects the ileocaecal region. It can mimic IBD (particularly CD) clinically. There are few descriptions of the histological changes, but lymphoid aggregates may occur and granulomas are unusual.^{120 121}

Autoimmune enteropathy

Autoimmune enteropathy is a rare entity which may involve the large bowel and cause IBD-like changes, particularly lamina propria chronic inflammation.^{122 123}

Common variable immune deficiency

Common variable immune deficiency (CVID) can cause crypt distortion, granulomas and acute inflammation, and may sometimes mimic IBD clinically and histologically. The hallmark feature of sparse or absent lamina propria plasma cells is not universal.¹²⁴

Focal active colitis

The histological pattern of 'focal active colitis', characterised by focal cryptitis or crypt abscess formation in the absence of other changes, is not specific and may represent IBD, infection, ischaemia, drugs (especially NSAIDs) or other causes.^{59 125 126} It should not be regarded as a diagnosis. If this pattern is seen, the possibility of underlying IBD and other causes should be mentioned.

Ileoanal pouch biopsies

Biopsies from an ileal pouch anal anastomosis are taken for various reasons, for example, to assess severity of inflammation, seek evidence of IBD, exclude other conditions, such as Cytomegalovirus (CMV), or exclude dysplasia. Rectal/columnar cuff (distal pouch) biopsies may also be taken. Adaptive changes, including villous atrophy and a colorectal phenotype, are common.¹²⁷ Inflammation is frequent, and a diagnosis of 'pouchitis' should not be based solely on histology.¹²⁷ Histological inflammatory scoring schemes may be useful clinically and as a guide for the pathologist.¹²⁷⁻¹²⁹ Identification or subclassification of IBD is difficult because changes resembling those of IBD, particularly CD, can occur for other reasons in this setting.¹²⁷ Misinterpretation may occur if clinical details are suboptimal.

Recommendations: mimics of IBD

- ▶ There are numerous histological mimics of IBD (EL1b RGA).
- ▶ Diverticular colitis and Diversion proctocolitis may closely resemble IBD.
- ▶ A full clinical and endoscopic history is necessary before the histological mimics of IBD can be excluded confidently.

TERMINOLOGY

Considerations

Some terms are ambiguous or can cause confusion. They are often avoidable (table 13).

Colitis

This word may mean UC to clinicians and inflammation of the colon to histopathologists. Qualification is essential so that the conclusion 'colitis' is not misinterpreted as meaning UC, with possible serious consequences.

'Non-specific colitis' and 'non-specific chronic colitis'

These terms may be misconstrued by clinicians as diagnoses⁹¹ and should be avoided. Mild crypt changes and borderline inflammation can occur in various circumstances.⁹¹ A description can be made, and the lack of specificity noted.

IBD unclassified, 'indefinite colitis and colitis of undetermined type/etiology'

Distinction between UC and CD is sometimes impossible. Treatment may exacerbate the problem.⁶¹ The label 'indefinite colitis' has been used for resection specimens with definite IBD in which further classification is not appropriate.^{3 7 65 130 131} Unfortunately, the term has caused confusion and has often been used incorrectly to mean 'colitis, cause unknown' or to describe a non-existent intermediate category between UC and CD.^{3 7 11 13 37 61 65 88 130 132} The term 'colitis of undetermined type/etiology' (CUTE) has also been suggested. Both terms are best avoided by histopathologists, and are certainly not used for biopsy diagnosis. The designation 'IBD unclassified (IBDU)' is recommended as it states unequivocally that the disease is IBD.^{6 7} If there is uncertainty about the presence of IBD, this should be made clear.

Microscopic colitis

This term has sometimes been used inappropriately for any form of histological inflammation occurring in the absence of endoscopic or radiological abnormalities, and might then encompass some examples of IBD. This usage is not recommended.

Probability

Histopathologists use various terms to express probability (see also section on Reporting scheme for IBD biopsies (PAID)). The terms 'in keeping with', 'consistent with' and 'compatible with' are convenient, but may cause misunderstandings with clinicians and with other pathologists.¹³³ To many pathologists they convey at least some degree of diagnostic uncertainty. These terms should not be used for dysplasia or malignancy.

Unfortunately, there are no universally agreed terms to describe the various levels of certainty or uncertainty encountered by histopathologists and clinicians, unless the diagnosis is definite.¹³³ Discussion of difficult cases with clinicians, ideally

Table 13 Some terms which may cause problems

Term	Problem	Alternative
Non-specific chronic colitis/non-specific colitis	May be misinterpreted as representing a diagnosis or a category. Avoid	Describe the features. Conclude with a comment on their lack of specificity
Colitis (as a conclusion, without further qualification)	May be misinterpreted as meaning ulcerative colitis	Qualify by suggesting aetiology or likely significance
Indefinite colitis	Often used inappropriately. Causes confusion. Avoid, at least for biopsy reporting	Inflammatory bowel disease, unclassified (IBDU)
Colitis of undetermined type/etiology (CUTE)	As for indefinite colitis. Avoid	IBDU
An unqualified diagnosis of microscopic colitis/ indiscriminate use of the term microscopic colitis	Requires qualification	Categorise as collagenous or lymphocytic colitis if possible, or describe and interpret the features
Incipient crypt abscess	Imprecise. Avoid.	Cryptitis or crypt abscess
Consistent with/in keeping with/compatible with	Perhaps overused. Could potentially mean anything from 'it might be' the diagnosis to 'it is' the diagnosis	Convey the degree of diagnostic certainty as precisely as possible

in the setting of clinicopathological meetings, should reduce the risk of terminological (and other) misunderstandings.¹³³

Recommendations: terminology and IBDU

- ▶ IBD should be subcategorised as UC or CD, or a preference for one of these diagnoses expressed.
- ▶ The term 'IBD unclassified' is recommended when IBD cannot be classified further.
- ▶ Clinicopathological meetings may improve the accuracy and precision of IBD diagnosis (EL5 RGD). Discussion of IBD cases which at first cannot be subcategorised may allow a preference to be expressed.
- ▶ The term 'indeterminate colitis' is not used for biopsy reporting and is best avoided.
- ▶ The term 'CUTE' should not be used.
- ▶ The terms 'non-specific colitis' and 'non-specific chronic colitis' should not be used.
- ▶ Caution is recommended when using terms such as 'in keeping with'.

DYSPLASIA

Clinical considerations

Dysplasia is a marker for future and underlying malignancy.^{65 134} Pancolonic dye spraying with targeted biopsies of macroscopically abnormal areas is recommended in clinical guidelines. If this is not possible, the colon is biopsied randomly; recommendations include 2–4 biopsies per site at 100 mm intervals.^{5 12} However, evidence helping to determine the ideal number is sparse.

Diagnosis of dysplasia

Diagnosis of dysplasia depends on atypical architecture (eg, crowding of glands) and cytology (eg, nuclear hyperchromasia, pseudostratification, enlargement, pleomorphism and loss of polarity).^{5 88 135} Typically, dysplasia extends to the mucosal surface (EL5 RGD)^{65 88 101} while regenerative changes do not.

Dysplasia in IBD often resembles that seen in colorectal adenomas.¹⁰¹ The epithelium in IBD-associated dysplasia is sometimes serrated.^{35 101} Inflammatory polyps occasionally develop foci of dysplasia (EL5 RGD).¹⁰¹

The term 'indefinite for dysplasia' may be appropriate if a decision cannot be made as to the presence of dysplasia for any reason, for example, atypical changes in the setting of inflammation.^{65 135} It is not an intermediate category between negative for dysplasia and low-grade dysplasia. If used, it should be qualified in the text of the conclusions. Sometimes, a description is preferable to this category. Further biopsies should be advised.

Low-grade dysplasia versus high-grade dysplasia

Architecture and cytology both help categorise dysplasia, and some authors rely on one or the other rather than both.^{9 101} The UK bowel cancer screening pathology guidelines emphasise architecture.⁹ Cytological features favouring high-grade dysplasia over low-grade dysplasia include nuclei in the upper half of a cell and complete loss of nuclear polarity.^{35 88 101} Nuclei tend to be larger, more hyperchromatic, more stratified and round or ovoid rather than 'pencil shaped'. Mitoses are more numerous and nucleoli more prominent. Architectural changes are also more severe, with cribriform areas.^{35 88} To be classified as having high-grade dysplasia a lesion should have at least a few crypts with high-grade changes, but the proportion required for a final diagnosis of high-grade dysplasia has not been agreed.^{9 88} The term 'carcinoma in situ' is not recommended.

DALM versus adenoma

The management of localised dysplastic lesions depends on their endoscopic features and resectability, and on whether they are located within or outside the area affected by IBD, rather than on categorisation of a polyp as a 'sporadic' adenoma or an IBD-associated dysplastic lesion. Furthermore, histology does not distinguish reliably between the latter two diagnoses. However, documentation of dysplasia in the perilesional mucosa is very important because it governs management after polypectomy.^{5 12 88}

Dual reporting of dysplasia

Interobserver variability for the diagnosis and grading of gastrointestinal dysplasia is a recognised problem.^{101 134 136} Biopsies should ideally be reported by more than one histopathologist (EL5 RGD)^{5 8} although there is conflicting evidence as to the clinical benefits of this approach.^{5 134} Distinction between low grade and high grade influences the management of flat dysplasia. The recent trend towards primary local endoscopic resection of all visible and well-delineated dysplastic lesions (with histological confirmation of margins) has meant that grading of dysplasia in such lesions is assuming less importance for the management of many cases.¹²

Additional techniques for diagnosing dysplasia

Reliance on additional techniques such as mucin stains and immunohistochemistry to help diagnose or grade dysplasia is not currently recommended. Nevertheless, they may sometimes provide corroboration of a diagnosis of dysplasia (EL5 RGD).^{5 8 101}

Recommendations: dysplasia

- ▶ Diagnosis and grading of dysplasia relies on architecture and cytology.
- ▶ Dysplasia is graded as low grade or high grade.
- ▶ The term 'indefinite for dysplasia' can be used when distinction between dysplastic and non-dysplastic atypia is not possible.
- ▶ Double reporting of cases with dysplasia or suspected dysplasia is recommended (EL5 RGD).

REPORTING SCHEME FOR IBD BIOPSIES (PAID)

Approach and suggested scheme

The acronym 'PAID' is a suggested aide memoire for the layout of the conclusion to an IBD biopsy report (table 14).

- P Pattern: of chronic changes: presence, distribution, extent
- A Activity: maximum grade, location
- I Interpretation: probability of IBD and, if relevant, probability of UC or CD
- D Dysplasia: location, severity

The suggested scheme represents a consensus opinion between the author, the BSG pathology section, and reviewers acting on behalf of the BSG IBD section, the BSG Central Services and Standards Committee, and the BSG Council (EL5 RGD).

Codes may be useful, and a scheme for these is also suggested.

The suggested proforma in the section on The 'PAID' scheme: proforma and text-based summaries, based on the PAID scheme in table 14, may serve as an aide-memoire or have other uses, for example, teaching and audit.

Table 14 'PAID' scheme for summarising IBD biopsy histology

<i>Pattern</i>	Recorded as text; no code	
<i>Activity</i>		
Grade (at each site)	Criteria*	Code
None	No intraepithelial neutrophils, erosions, or ulcers	A0
Mild	Cryptitis in up to 25% of crypts/crypt abscesses in up to 10% of crypts/both	A1
Moderate	Cryptitis in >25% of crypts/crypt abscesses in >10% of crypts/sparse small foci of surface erosion/combinations	A2
Severe	Ulceration or multiple foci of erosion	A3
<i>Interpretation</i>		
IBD—probability†	Comment	Code
IBD definite/very likely	Histology is of IBD, or is highly suggestive/supportive of IBD. <i>Subcategorise as below</i>	IBD-DVL
IBD favoured over other causes	Histology is more likely to be IBD than other causes, but is not convincing. <i>Subcategorisation may be inappropriate</i>	IBD-F
No evidence of IBD		IBD-0
Subcategory of IBD†		
UC definite/very likely	Histology is of UC, or strongly favours UC over CD	UC-DVL
UC favoured over CD	Histology does not distinguish, but favours UC over CD	UC-F
IBD unclassified	Neither UC nor CD is favoured	IBDU
CD favoured over UC	Histology does not distinguish, but favours CD over UC	CD-F
CD definite/very likely	Histology is of CD, or strongly favours CD over UC	CD-DVL
<i>Dysplasia</i>		
Grade	Comment	Code
No dysplasia		D0
Low-grade dysplasia	Specify site(s), and number of biopsies involved	DL
High-grade dysplasia	Specify site(s), and number of biopsies involved	DH
Indefinite for dysplasia	Unclassifiable atypia	DI

*Modified from previous schemes.^{3 12 40 52 53}

†In conjunction with the clinical picture.

CD, Crohn's disease; DH, dysplasia, high grade; DL, dysplasia, low grade; DVL, definite or very likely; F, favoured; IBD, inflammatory bowel disease; IBDU, inflammatory bowel disease, unclassified; UC, ulcerative colitis.

Probability

Clinicians often ask for a comment on the probability of a diagnosis (table 14). It is reasonable to attempt this, within the limitations of the perspective of the histopathologist. As noted above, ideal terms are difficult to find. Sometimes, the histology is highly characteristic and almost diagnostic in isolation, that is, the word 'definite' might be used (assuming that the histology fits with the clinical picture). Alternatively, the features could be strongly suggestive/supportive of a new diagnosis or highly supportive of a known diagnosis, in which case the diagnosis is 'very likely'. From a management point of view these two categories are similar and are combined in the scheme. If the features are less convincing but still allow one diagnosis to be preferred, the term 'favoured' is suggested.

Clinicopathological correlation

In this scheme, the histopathological findings are interpreted in the context of the clinical picture. If necessary, final classification should be delayed until discussion with clinicians has taken place.

Recommendations: structured approach to conclusion ('PAID' scheme)

- ▶ A structured approach to the conclusion of an IBD biopsy report is recommended. This should include comments on the Pattern of changes, Activity, Interpretation and Dysplasia. The acronym 'PAID' can be used as an aide-memoire.

THE 'PAID' SCHEME: PROFORMA AND TEXT-BASED SUMMARIES

Pattern	Interpretation
<i>Site(s) involved by disease</i>	<i>IBD—probability</i>
Ileum	IBD definite or very likely/IBD favoured over other causes/no evidence of IBD
Caecum	<i>Subcategory of IBD, if appropriate</i>
Ascending colon	UC definite or very likely/UC favoured/IBDU/CD favoured/CD definite or very likely/no subcategory
Transverse colon	
Descending colon	
Sigmoid colon	
Rectum	
<i>Anatomical distribution of disease</i>	Dysplasia
Continuous/segmental/single site	<i>Dysplasia—maximum grade</i>
<i>Intrasite distribution of disease</i>	None/low grade/high grade/indefinite
Diffuse/patchy/focal/combinations	<i>Sites involved by low-grade dysplasia</i>
	Caecum
	Ascending colon
Activity	Transverse colon
<i>Degree of maximum activity</i>	Descending colon
None/mild/moderate/severe	Sigmoid colon
<i>Site(s) involved by activity</i>	Rectum
Ileum	<i>Sites involved by high-grade dysplasia</i>
Caecum	Caecum
Ascending colon	Ascending colon
Transverse colon	Transverse colon
Descending colon	Descending colon
Sigmoid colon	Sigmoid colon
Rectum	Rectum
<i>Site(s) of maximal colorectal activity</i>	
Caecum	
Ascending colon	Codes
Transverse colon	▶ A0/A1/A2/A3
Descending colon	▶ IBD-DVL/IBD-F/IBD-0
Sigmoid colon	▶ UC-DVL/UC-F/IBDU/CD-DVL/CD-F/none
Rectum	▶ D0/DL/DH/DI

Reporting scheme (PAID): text-based summaries

The dataset proforma (above) can be used to summarise the findings. Alternatively, text conclusions might be structured as in the following examples.

Initial biopsies

Rectal bleeding. Colonoscopic biopsies.

P Diffuse chronic colitis involving sigmoid colon and rectum

A Mild activity, rectum

I IBD, strongly favouring UC over CD

D No dysplasia

Histology codes. A1; IBD-DVL UC-DVL; D0

Abdominal pain. Colonoscopic biopsies.

P Patchy chronic colitis from caecum to transverse colon with minimal rectal inflammation

A Severe activity, caecum and ascending colon; mild activity elsewhere

I Features strongly suggestive of IBD, favouring CD over UC

D No dysplasia

Histology codes. A3; IBD-DVL CD-F; D0

Follow-up biopsies

The PAID approach can also be used for follow-up biopsies, with some modifications. A statement of the level of support for the established diagnosis is often useful.

UC for 10 years. Left colonic and rectal biopsies.

P Chronic colitis involving sigmoid and rectum

A Mild activity, sigmoid and rectum

I The histological features are those of IBD and strongly favour the known diagnosis of UC over CD

D No dysplasia

Histology codes. A1; IBD-DVL UC-DVL; D0

Known IBD, unclassified. Ileal, colonic and rectal biopsies.

P Patchy chronic colitis involving all sites, with granulomas

A Mild activity in caecum and rectum

I The features are those of the known diagnosis of IBD and favour CD over UC

D Low-grade dysplasia, rectum

Histology codes. A1; IBD-DVL CD-F; DL

KEY RECOMMENDATIONS**Clinical considerations**

- ▶ Accurate histopathological assessment is important for optimum diagnosis, subclassification and management of IBD.
- ▶ Biopsies for the diagnosis of IBD should be accompanied by a record of endoscopic findings and by a full clinical history, including duration of disease and details of treatment (EL2a RGB).
- ▶ A regular clinicopathological meeting for discussion of IBD cases should be available.

Distribution and extent of disease

- ▶ Distribution of microscopic changes within biopsies, between biopsies and between sites should be assessed (EL1b-2b RGB).
- ▶ The terms 'diffuse', 'patchy' and 'focal' can be used for distribution within sites.
- ▶ The terms 'continuous between sites' and 'discontinuous between sites' (or its synonym 'segmental') can be used for distribution between sites.

- ▶ There are several exceptions to the typical continuous distribution of UC, even at initial presentation (EL1a RGA), that should not necessarily prompt a change of diagnosis. These include a caecal patch and rectal sparing.

IBD versus infection/non-IBD

- ▶ The microscopic features that favour IBD over infective colitis include basal plasmacytosis and architectural changes (EL1a RGA).

Subclassification of IBD and assessment of granulomas

- ▶ The microscopic features that help distinguish UC and CD from one another include granulomas, architectural changes and distribution of disease (EL1a RGA).
- ▶ Non-cryptolytic granulomas are more useful than any other feature for discriminating between CD and UC (EL1a RGA).
- ▶ Cryptolytic granulomas occur in many colitides and probably have little or no discriminant value (EL4 RGC).
- ▶ Isolated granulomas may merit serial sections to help define their relationship with ruptured crypts (EL5 RGD).
- ▶ If granuloma formation is the sole abnormality, cautious interpretation is advised (EL5 RGD).

Assignment to a category on the basis of histology

- ▶ No histological feature is diagnostic in isolation of IBD or of a subtype of IBD. Instead, certain features are more prevalent in one disease group than in another.
- ▶ Diagnostic accuracy is optimised if multiple features are assessed together, if the intersite and intrasite distribution of changes is also analysed, and if the clinical details are taken into account.

Effects of time and treatment

- ▶ Early untreated IBD may show few or no histological changes. There is some correlation between the onset of each abnormality and duration of symptoms. Basal plasmacytosis is the earliest feature. Crypt changes typically appear later (EL1b RGB).
- ▶ Time and treatment may modify the histology, distribution and extent of IBD (EL2a RGB). Longstanding UC not infrequently shows discontinuity and/or rectal sparing.
- ▶ Interpretation of biopsies from early or longstanding IBD should be cautious (EL2a RGB).
- ▶ Modification of an established diagnosis of UC or CD should only be made if there is convincing evidence for a change, ideally after review of previous histology and of clinical data in a multidisciplinary setting.

Paediatric IBD

- ▶ The histology of paediatric IBD is similar to that of adult disease.
- ▶ Compared with adult disease, the prevalence of 'chronic' changes in paediatric UC may be lower and the prevalence of patchy/discontinuous changes higher (EL2b RGB).

Ileal biopsies

- ▶ In the setting of IBD, ileal inflammation strongly favours CD over UC (EL1b RGB).
- ▶ Granulomas (non-cryptolytic) in inflamed ileal biopsies help discriminate CD from UC (EL1b RGB). Few other features are useful.

Upper gastrointestinal biopsies

- ▶ Upper gastrointestinal involvement by CD is considerably more frequent than involvement by UC (EL4 RGC).
- ▶ Other more common causes of upper gastrointestinal inflammation, especially gastro-oesophageal reflux and *H pylori*-associated gastritis, should be excluded before involvement by IBD is suggested (EL5 RGD).

- ▶ In the setting of IBD, upper gastrointestinal granulomas strongly favour CD over UC (EL4 RGC).
- ▶ Upper gastrointestinal granulomas may raise the possibility of new CD, but caution is advised (EL5 RGD).

Mimics of IBD

- ▶ There are numerous histological mimics of IBD (EL1b RGA).
- ▶ Diverticular colitis and diversion proctocolitis may closely resemble IBD.
- ▶ A full clinical and endoscopic history is necessary before the histological mimics of IBD can be excluded confidently.

Terminology and IBDU

- ▶ IBD should be subcategorised as UC or CD, or a preference for one of these diagnoses expressed.
- ▶ The term 'IBD unclassified' is recommended when IBD cannot be classified further.
- ▶ Clinicopathological meetings may improve the accuracy and precision of IBD diagnosis (EL5 RGD). Discussion of IBD cases which at first cannot be subcategorised may allow a preference to be expressed.
- ▶ The term 'indeterminate colitis' is not used for biopsy reporting and is best avoided.
- ▶ The term 'CUTE' should not be used.
- ▶ The terms 'non-specific colitis' and 'non-specific chronic colitis' should not be used.
- ▶ Caution is recommended when using terms such as 'in keeping with'.

Dysplasia

- ▶ Diagnosis of dysplasia relies on architecture and cytology.
- ▶ Dysplasia is graded as low grade or high grade.
- ▶ The term 'indefinite for dysplasia' can be used when distinction between dysplastic and non-dysplastic atypia is not possible.
- ▶ Double reporting of cases with dysplasia or suspected dysplasia is recommended (EL5 RGD).

Structured approach to conclusion: 'PAID' scheme

- ▶ A structured approach to the conclusion of an IBD biopsy report is recommended. This should include comments on Pattern of changes, Activity, Interpretation and Dysplasia. The acronym 'PAID' can be used as an aide-memoire.

Acknowledgements The author is very grateful to Professor Neil Shepherd for consistent support and encouragement; to Dr Adrian Bateman for much practical assistance; and to Professor Geraint Williams, Dr Chris Probert, Dr Norman Carr, Dr Philip Kaye, Dr Newton Wong, and other unnamed reviewers for their valuable comments on the manuscript.

Competing interests None

Provenance and peer review Not commissioned; internally peer reviewed.

Correction notice This paper has been corrected since it was published online. Table 14 and the PAID Scheme table have been reformatted for clarity.

REFERENCES

- 1 Jenkins D, Balsitis M, Gallivan S, *et al*. Guidelines for the initial biopsy diagnosis of suspected chronic idiopathic inflammatory bowel disease. The British Society of Gastroenterology Initiative. *J Clin Pathol* 1997;50:93–105.
- 2 Feakins RM. An audit of UK pathologists' use of the British Society of Gastroenterology guidelines for the initial biopsy diagnosis of suspected chronic idiopathic inflammatory bowel disease. *J Clin Pathol* 2007;60:1178–9.
- 3 Stange EF, Travis SPL, Vermeire S, *et al*. for the European Crohn's and Colitis Organisation (ECCO). European evidence-based consensus on the diagnosis and management of ulcerative colitis: definitions and diagnosis. *J Crohns Colitis* 2008;2:1–23.
- 4 Schumacher G, Kollberg B, Sandstedt B. A prospective study of first attacks of inflammatory bowel disease and infectious colitis. Histologic course during the 1st year after presentation. *Scand J Gastroenterol* 1994;29:318–32.
- 5 Stange EF, Travis SPL, Vermeire S, *et al*. European evidence based consensus on the diagnosis and management of Crohn's disease: definitions and diagnosis. *Gut* 2006;55(suppl 1):i1–15.
- 6 Mowat C, Cole A, Windsor A, *et al*. Guidelines for the management of inflammatory bowel disease in adults. *Gut* 2011;60:571–607.
- 7 Silverberg MS, Satsangi J, Ahmad T, *et al*. Toward an integrated clinical, molecular and serological classification of inflammatory bowel disease: report of a Working Party of the 2005 Montreal World Congress of Gastroenterology. *Can J Gastroenterol* 2005;19(Suppl A):5–36.
- 8 Feakins RM, Campbell F, Mears L, *et al*. *Tissue pathways for gastrointestinal and hepatopancreatobiliary pathology*. London: Royal College of Pathologists, 2009.
- 9 Carey F, Newbold M, Quirke P, *et al*. *Reporting lesions in the NHS Bowel Cancer Screening Programme*. Sheffield: NHS Cancer Screening Programmes, 2007.
- 10 Carter MJ, Lobo AJ, Travis SP. IBD Section, British Society of Gastroenterology. Guidelines for the management of inflammatory bowel disease in adults. *Gut* 2004;53(Suppl 5):V1–16.
- 11 Theodossi A, Spiegelhalter DJ, Jass J, *et al*. Observer variation and discriminatory value of biopsy features in inflammatory bowel disease. *Gut* 1994;35:961–8.
- 12 Cairns SR, Scholefield JH, Steele RJ, *et al*. Guidelines for colorectal cancer screening and surveillance in moderate and high risk groups (update from 2002). *Gut* 2010;59:666–89.
- 13 Tanaka M, Saito H, Fukuda S, *et al*. Simple mucosal biopsy criteria differentiating among Crohn disease, ulcerative colitis, and other forms of colitis: measurement of validity. *Scand J Gastroenterol* 2000;35:281–6.
- 14 Dejaco C, Oesterreicher C, Angelberger S, *et al*. Diagnosing colitis: a prospective study on essential parameters for reaching a diagnosis. *Endoscopy* 2003;35:1004–8.
- 15 Tsang P, Rotterdam H. Biopsy diagnosis of colitis: possibilities and pitfalls. *Am J Surg Pathol* 1999;23:423–30.
- 16 Rex DK, Bond JH, Winawer S, *et al*. Quality in the technical performance of colonoscopy and the continuous quality improvement process for colonoscopy: recommendations of the U.S. Multi-Society Task Force on Colorectal Cancer. *Am J Gastroenterol* 2002;97:1296–308.
- 17 Kim B, Barnett JL, Kleer CG, *et al*. Endoscopic and histological patchiness in treated ulcerative colitis. *Am J Gastroenterol* 1999;94:3258–62.
- 18 Surawicz CM, Haggitt RC, Husseman M, *et al*. Mucosal biopsy diagnosis of colitis: acute self-limited colitis and idiopathic inflammatory bowel disease. *Gastroenterology* 1994;107:755–63.
- 19 Levine DS, Haggitt RC. Normal histology of the colon. *Am J Surg Pathol* 1989;13:966–84.
- 20 Farris AB, Lauwers GY, Ferry JA, *et al*. The rectal tonsil: a reactive lymphoid proliferation that may mimic lymphoma. *Am J Surg Pathol* 2008;32:1075–9.
- 21 Tanaka M, Riddell RH, Saito H, *et al*. Morphologic criteria applicable to biopsy specimens for effective distinction of inflammatory bowel disease from other forms of colitis and of Crohn's disease from ulcerative colitis. *Scand J Gastroenterol* 1999;34:55–67.
- 22 Shepherd NA. What is the significance of muciphages in colorectal biopsies? Muciphages and other mucosal accumulations in the colorectal mucosa. *Histopathology* 2000;36:559–62.
- 23 Pascal RR, Gramlich TL, Parker KM, *et al*. Geographic variations in eosinophil concentration in normal colonic mucosa. *Mod Pathol* 1997;10:363–5.
- 24 Driman DK, Preiksaitis HG. Colorectal inflammation and increased cell proliferation associated with oral sodium phosphate bowel preparation solution. *Hum Pathol* 1998;29:972–8.
- 25 Surawicz CM, Belic L. Rectal biopsy helps to distinguish acute self-limited colitis from idiopathic inflammatory bowel disease. *Gastroenterology* 1984;86:104–13.
- 26 Dundas SA, Dutton J, Skipworth P. Reliability of rectal biopsy in distinguishing between chronic inflammatory bowel disease and acute self-limiting colitis. *Histopathology* 1997;31:60–6.
- 27 Makapugay LM, Dean PJ. Diverticular disease-associated chronic colitis. *Am J Surg Pathol* 1996;20:94–102.
- 28 Washington K, Greenson JK, Montgomery E, *et al*. Histopathology of ulcerative colitis in initial rectal biopsy in children. *Am J Surg Pathol* 2002;26:1441–9.
- 29 Mahadeva U, Martin JP, Patel NK, *et al*. Granulomatous ulcerative colitis: a re-appraisal of the mucosal granuloma in the distinction of Crohn's disease from ulcerative colitis. *Histopathology* 2002;41:50–5.
- 30 Tanaka M, Saito H, Kusumi T, *et al*. Spatial distribution and histogenesis of colorectal Paneth cell metaplasia in idiopathic inflammatory bowel disease. *J Gastroenterol Hepatol* 2001;16:1353–9.
- 31 Robert ME, Tang L, Hao LM, *et al*. Patterns of inflammation in mucosal biopsies of ulcerative colitis: perceived differences in pediatric populations are limited to children younger than 10 years. *Am J Surg Pathol* 2004;28:183–9.
- 32 Nostrant TT, Kumar NB, Appelman HD. Histopathology differentiates acute self-limited colitis from ulcerative colitis. *Gastroenterology* 1987;92:318–28.
- 33 Allison MC, Hamilton-Dutoit SJ, Dhillon AP, *et al*. The value of rectal biopsy in distinguishing self-limited colitis from early inflammatory bowel disease. *Q J Med* 1987;65:985–95.
- 34 Seldenrijk CA, Morson BC, Meuwissen SGM, *et al*. Histopathological evaluation of colonic mucosal biopsy specimens in chronic inflammatory bowel disease: diagnostic implications. *Gut* 1991;32:1514–20.

- 35 Talbot I, Price A, Salto-Tellez M. *Biopsy pathology in colorectal disease*. 2nd edn. London: Hodder Arnold, 2006.
- 36 Bentley E, Jenkins D, Campbell F, et al. How could pathologists improve the initial diagnosis of colitis? Evidence from an international workshop. *J Clin Pathol* 2002;55:955–60.
- 37 Escher JC, ten KF, Lichtenbelt K, et al. Value of rectosigmoidoscopy with biopsies for diagnosis of inflammatory bowel disease in children. *Inflamm Bowel Dis* 2002;8:16–22.
- 38 Markowitz J, Kahn E, Grancher K, et al. Atypical rectosigmoid histology in children with newly diagnosed ulcerative colitis. *Am J Gastroenterol* 1993;88:2034–7.
- 39 Kleer CG, Appelman HD. Ulcerative colitis: patterns of involvement in colorectal biopsies and changes with time. *Am J Surg Pathol* 1998;22:983–9.
- 40 Joo M, Odze RD. Rectal sparing and skip lesions in ulcerative colitis: a comparative study of endoscopic and histologic findings in patients who underwent proctocolectomy. *Am J Surg Pathol* 2010;34:689–96.
- 41 Scott IS, Sheaff M, Coumbe A, et al. Appendiceal inflammation in ulcerative colitis. *Histopathology* 1998;33:168–73.
- 42 Odze R. Diagnostic problems and advances in inflammatory bowel disease. *Mod Pathol* 2003;16:347–58.
- 43 D'Haens G, Geboes K, Peeters M, et al. Patchy cecal inflammation associated with distal ulcerative colitis: a prospective endoscopic study. *Am J Gastroenterol* 1997;92:1275–9.
- 44 Kroft SH, Stryker SJ, Rao MS. Appendiceal involvement as a skip lesion in ulcerative colitis. *Mod Pathol* 1994;7:912–14.
- 45 Mutinga ML, Odze RD, Wang HH, et al. The clinical significance of right-sided colonic inflammation in patients with left-sided chronic ulcerative colitis. *Inflamm Bowel Dis* 2004;10:215–19.
- 46 Yantiss RK, Farraye FA, O'Brien MJ, et al. Prognostic significance of superficial fissuring ulceration in patients with severe "indeterminate" colitis. *Am J Surg Pathol* 2006;30:165–70.
- 47 Geboes K, Dalle I. Influence of treatment on morphological features of mucosal inflammation. *Gut* 2002;50:37–42.
- 48 Glickman JN, Bousvaros A, Farraye FA, et al. Pediatric patients with untreated ulcerative colitis may present initially with unusual morphologic findings. *Am J Surg Pathol* 2004;28:190–7.
- 49 Dube AK, Cross SS, Lobo AJ. Audit of the histopathological diagnosis of non-neoplastic colorectal biopsies: achievable standards for the diagnosis of inflammatory bowel disease. *J Clin Pathol* 1998;51:378–81.
- 50 Cross SS, Harrison RF. Discriminant histological features in the diagnosis of chronic idiopathic inflammatory bowel disease: analysis of a large dataset by a novel data visualisation technique. *J Clin Pathol* 2002;55:51–7.
- 51 Keren DF, Appelman HD, Dobbins WO III, et al. Correlation of histopathologic evidence of disease activity with the presence of immunoglobulin-containing cells in the colons of patients with inflammatory bowel disease. *Hum Pathol* 1984;15:757–63.
- 52 Haskell H, Andrews CW Jr, Reddy SI, et al. Pathologic features and clinical significance of "backwash" ileitis in ulcerative colitis. *Am J Surg Pathol* 2005;29:1472–81.
- 53 Rutter M, Saunders B, Wilkinson K, et al. Severity of inflammation is a risk factor for colorectal neoplasia in ulcerative colitis. *Gastroenterology* 2004;126:451–9.
- 54 Geboes K, Riddell R, Ost A, et al. A reproducible grading scale for histological assessment of inflammation in ulcerative colitis. *Gut* 2000;47:404–9.
- 55 Chamailard M, Chevaux JB, Peyrin-Biroulet L. Looking beyond histological healing in ulcerative colitis: towards the establishment of a molecular signature for quiescent but progressive disease. *Gut* 2013;62:959–60.
- 56 Hebuterne X, Lemann M, Bouhnik Y, et al. Endoscopic improvement of mucosal lesions in patients with moderate to severe ileocolonic Crohn's disease following treatment with certolizumab pegol. *Gut* 2013;62:201–8.
- 57 Mayer L, Sandborn WJ, Stepanov Y, et al. Anti-IP-10 antibody (BMS-936557) for ulcerative colitis: a phase II randomised study. *Gut* Published Online First: 5 March 2013. doi:10.1136/gutjnl-2012-303424
- 58 Jenkins D, Goodall A, Scott BB. Simple objective criteria for diagnosis of causes of acute diarrhoea on rectal biopsy. *J Clin Pathol* 1997;50:580–5.
- 59 Khor TS, Fujita H, Nagata K, et al. Biopsy interpretation of colonic biopsies when inflammatory bowel disease is excluded. *J Gastroenterol* 2012;47:226–48.
- 60 Therkildsen MH, Jensen BN, Teglbjaerg PS, et al. The final outcome of patients presenting with their first episode of acute diarrhoea and an inflamed rectal mucosa with preserved crypt architecture. A clinicopathologic study. *Scand J Gastroenterol* 1989;24:158–64.
- 61 Geboes K, Colombel JF, Greenstein A, et al. Indeterminate colitis: a review of the concept—what's in a name? *Inflamm Bowel Dis* 2008;14:850–7.
- 62 Le Berre N, Heresbach D, Kerbaol M, et al. Histological discrimination of idiopathic inflammatory bowel disease from other types of colitis. *J Clin Pathol* 1995;48:749–53.
- 63 Lessells AM, Beck JS, Burnett RA, et al. Observer variability in the histopathological reporting of abnormal rectal biopsy specimens. *J Clin Pathol* 1994;47:48–52.
- 64 Geboes K, Ectors N, D'Haens G, et al. Is ileoscopy with biopsy worthwhile in patients presenting with symptoms of inflammatory bowel disease? *Am J Gastroenterol* 1998;93:201–16.
- 65 Guindi M, Riddell RH. Indeterminate colitis. *J Clin Pathol* 2004;57:1233–44.
- 66 Lee FD, Maguire C, Obeidat W, et al. Importance of cryptolytic lesions and pericryptal granulomas in inflammatory bowel disease. *J Clin Pathol* 1997;50:148–52.
- 67 Warren BF, Shepherd NA, Price AB, et al. Importance of cryptolytic lesions and pericryptal granulomas in inflammatory bowel disease. *J Clin Pathol* 1997;50:880–1.
- 68 Tanaka M, Masuda T, Yao T, et al. Observer variation of diagnoses based on simple biopsy criteria differentiating among Crohn's disease, ulcerative colitis, and other forms of colitis. *J Gastroenterol Hepatol* 2001;16:1368–72.
- 69 Giard RW, Hermans J, Ruiter DJ, et al. Variations in histopathological evaluation of non-neoplastic colonic mucosal abnormalities; assessment and clinical significance. *Histopathology* 1985;9:535–41.
- 70 Bernstein CN, Shanahan F, Anton PA, et al. Patchiness of mucosal inflammation in treated ulcerative colitis: a prospective study. *Gastrointest Endosc* 1995;42:232–7.
- 71 Hyde GM, Jewell DP, Warren BF. Histological changes associated with the use of intravenous cyclosporin in the treatment of severe ulcerative colitis may mimic dysplasia. *Colorectal Dis* 2002;4:455–8.
- 72 Bermejo F, Lopez-Sanroman A, Hinojosa J, et al. Infliximab induces clinical, endoscopic and histological responses in refractory ulcerative colitis. *Rev Esp Enferm Dig* 2004;96:94–101.
- 73 Bousvaros A, Antonioli DA, Colletti RB, et al. Differentiating ulcerative colitis from Crohn disease in children and young adults: report of a working group of the North American Society for Pediatric Gastroenterology, Hepatology, and Nutrition and the Crohn's and Colitis Foundation of America. *J Pediatr Gastroenterol Nutr* 2007;44:653–74.
- 74 Goldstein N, Dulai M. Contemporary morphologic definition of backwash ileitis in ulcerative colitis and features that distinguish it from Crohn disease. *Am J Clin Pathol* 2006;126:365–76.
- 75 Kundhal PS, Stormon MO, Zachos M, et al. Gastral antral biopsy in the differentiation of pediatric colitides. *Am J Gastroenterol* 2003;98:557–61.
- 76 Wright CL, Riddell RH. Histology of the stomach and duodenum in Crohn's disease. *Am J Surg Pathol* 1998;22:383–90.
- 77 Lin J, McKenna BJ, Appelman HD. Morphologic findings in upper gastrointestinal biopsies of patients with ulcerative colitis: a controlled study. *Am J Surg Pathol* 2010;34:1672–7.
- 78 Tobin JM, Sinha B, Ramani P, et al. Upper gastrointestinal mucosal disease in pediatric Crohn disease and ulcerative colitis: a blinded, controlled study. *J Pediatr Gastroenterol Nutr* 2001;32:443–8.
- 79 Valdez R, Appelman HD, Bronner MP, et al. Diffuse duodenitis associated with ulcerative colitis. *Am J Surg Pathol* 2000;24:1407–13.
- 80 Oberhuber G, Puspok A, Oesterreicher C, et al. Focally enhanced gastritis: a frequent type of gastritis in patients with Crohn's disease. *Gastroenterology* 1997;112:698–706.
- 81 Lash RH, Lauwers GY, Odze RD, et al. Inflammatory disorders of the stomach. In: Odze RD, Goldblum JR, eds. *Surgical pathology of the GI tract, liver, biliary tract and pancreas*. 2nd edn. Philadelphia: Saunders Elsevier; 2009:269–320.
- 82 Sharif F, McDermott M, Dillon M, et al. Focally enhanced gastritis in children with Crohn's disease and ulcerative colitis. *Am J Gastroenterol* 2002;97:1415–20.
- 83 McHugh JB, Gopal P, Greenson JK. The clinical significance of focally enhanced gastritis in children. *Am J Surg Pathol* 2013;37:295–9.
- 84 Ebach DR, Vanderheyden AD, Ellison JM, et al. Lymphocytic esophagitis: a possible manifestation of pediatric upper gastrointestinal Crohn's disease. *Inflamm Bowel Dis* 2011;17:45–9.
- 85 Geraghty JM, Talbot IC. Diversion colitis: histological features in the colon and rectum after defunctioning colostomy. *Gut* 1991;32:1020–3.
- 86 Edwards CM, George B, Warren B. Diversion colitis: new light through old windows. *Histopathology* 1999;34:1–5.
- 87 Feakins RM. Diversion proctocolitis with granulomatous vasculitis in a patient without inflammatory bowel disease. *Histopathology* 2000;36:88–9.
- 88 Greenson JK, Odze RD. Inflammatory disorders of the large intestine. In: Odze RD, Goldblum JR, eds. *Surgical pathology of the GI tract, liver, biliary tract and pancreas*. 2nd edn. Philadelphia: Saunders Elsevier; 2009:355–94.
- 89 Asplund S, Gramlich T, Fazio V, et al. Histologic changes in defunctioned rectums in patients with inflammatory bowel disease: a clinicopathologic study of 82 patients with long-term follow-up. *Dis Colon Rectum* 2002;45:1206–13.
- 90 Warren BF, Shepherd NA, Bartolo DC, et al. Pathology of the defunctioned rectum in ulcerative colitis. *Gut* 1993;34:514–16.
- 91 Geboes K, Villanacci V. Terminology for the diagnosis of colitis. Are indeterminate colitis and microscopic colitis useful terms? *J Clin Pathol* 2005;58:1133–4.
- 92 Nyhlin N, Bohr J, Eriksson S, et al. Systematic review: microscopic colitis. *Aliment Pharmacol Ther* 2006;23:1525–34.
- 93 Ayata G, Ithamukkala S, Sapp H, et al. Prevalence and significance of inflammatory bowel disease-like morphologic features in collagenous and lymphocytic colitis. *Am J Surg Pathol* 2002;26:1414–23.

Review

- 94 Warren BF, Edwards CM, Travis SP. 'Microscopic colitis': classification and terminology. *Histopathology* 2002;40:374–6.
- 95 Lazenby AJ. Collagenous and lymphocytic colitis. *Semin Diagn Pathol* 2007;22:295–300.
- 96 Libbrecht L, Croes R, Ectors N, *et al.* Microscopic colitis with giant cells. *Histopathology* 2002;40:335–8.
- 97 Yantiss RK, Panczykowski A, Misdraji J, *et al.* A comprehensive study of nondysplastic and dysplastic serrated polyps of the vermiform appendix. *Am J Surg Pathol* 2007;31:1742–53.
- 98 Goldstein NS, Gyorfí T. Focal lymphocytic colitis and collagenous colitis: patterns of Crohn's colitis? *Am J Surg Pathol* 1999;23:1075–81.
- 99 Pokorny CS, Kneale KL, Henderson CJ. Progression of collagenous colitis to ulcerative colitis. *J Clin Gastroenterol* 2001;32:435–8.
- 100 Burroughs SH, Bowrey DJ, Morris-Stiff GJ, *et al.* Granulomatous inflammation in sigmoid diverticulitis: two diseases or one? *Histopathology* 1998;33:349–53.
- 101 Fenoglio-Preiser CM, Noffsinger AE, Stemmerman GN, *et al.* *Gastrointestinal pathology. An atlas and text.* 3rd edn. Philadelphia: Lippincott Williams and Wilkins, 2008.
- 102 Yantiss RK, Odze RD. Diagnostic difficulties in inflammatory bowel disease pathology. *Histopathology* 2006;48:116–32.
- 103 Gledhill A, Dixon MF. Crohn's-like reaction in diverticular disease. *Gut* 1998;42:392–5.
- 104 Tursi A. Segmental colitis associated with diverticulosis: complication of diverticular disease or autonomous entity? *Dig Dis Sci* 2011;56:27–34.
- 105 Sultan K, Fields S, Panagopoulos G, *et al.* The nature of inflammatory bowel disease in patients with coexistent colonic diverticulosis. *J Clin Gastroenterol* 2006;40:317–21.
- 106 Lampert IA, Thorpe P, van Noorden S, *et al.* Selective sparing of enterochromaffin cells in graft versus host disease affecting the colonic mucosa. *Histopathology* 1985;9:875–86.
- 107 Gupta J, Shepherd NA. Colorectal mass lesions masquerading as chronic inflammatory bowel disease on mucosal biopsy. *Histopathology* 2003;42:476–81.
- 108 Kotler DP, Weaver SC, Terzakis JA. Ultrastructural features of epithelial cell degeneration in rectal crypts of patients with AIDS. *Am J Surg Pathol* 1986;10:531–8.
- 109 Orenstein JM, Dieterich DT. The histopathology of 103 consecutive colonoscopy biopsies from 82 symptomatic patients with acquired immunodeficiency syndrome: original and look-back diagnoses. *Arch Pathol Lab Med* 2001;125:1042–6.
- 110 Hoie S, Knudsen LS, Gerstoft J. Lymphogranuloma venereum proctitis: a differential diagnosis to inflammatory bowel disease. *Scand J Gastroenterol* 2011;46:503–10.
- 111 Arnold CA, Limketkai BN, Illei PB, *et al.* Syphilitic and lymphogranuloma venereum (LGV) proctocolitis: clues to a frequently missed diagnosis. *Am J Surg Pathol* 2013;37:38–46.
- 112 de la Monte SM, Hutchins GM. Follicular proctocolitis and neuromatous hyperplasia with lymphogranuloma venereum. *Hum Pathol* 1985;16:1025–32.
- 113 Jain D, Warren BF, Riddell RH. Inflammatory disorders of the large intestine. In: Shepherd NA, Warren BF, Williams GT, *et al.*, eds. *Morson and Dawson's gastrointestinal pathology.* 5th edn. Oxford: Wiley-Blackwell; 2013:552–635.
- 114 Lamps LW. Infective disorders of the gastrointestinal tract. *Histopathology* 2007;50:55–63.
- 115 Pulimood AB, Amarapurkar DN, Ghoshal U, *et al.* Differentiation of Crohn's disease from intestinal tuberculosis in India in 2010. *World J Gastroenterol* 2011;17:433–43.
- 116 Yamamoto-Furusho JK, Torijano-Carrera E. Intestinal protozoa infections among patients with ulcerative colitis: prevalence and impact on clinical disease course. *Digestion* 2010;82:18–23.
- 117 Lee FD. Importance of apoptosis in the histopathology of drug related lesions in the large intestine. *J Clin Pathol* 1993;46:118–22.
- 118 Parfitt JR, Jayakumar S, Driman DK. Mycophenolate mofetil-related gastrointestinal mucosal injury: variable injury patterns, including graft-versus-host disease-like changes. *Am J Surg Pathol* 2008;32:1367–72.
- 119 Singh B, Mortensen NJ, Warren BF. Histopathological mimicry in mucosal prolapse. *Histopathology* 2007;50:97–102.
- 120 Kim ES, Chung WC, Lee KM, *et al.* A case of intestinal Behcet's disease similar to Crohn's colitis. *J Korean Med Sci* 2007;22:918–22.
- 121 Lee RG. The colitis of Behcet's syndrome. *Am J Surg Pathol* 1986;10:888–93.
- 122 Carroccio A, Volta U, Di Prima L, *et al.* Autoimmune enteropathy and colitis in an adult patient. *Dig Dis Sci* 2003;48:1600–6.
- 123 Akram S, Murray JA, Pardi DS, *et al.* Adult autoimmune enteropathy: Mayo Clinic Rochester experience. *Clin Gastroenterol Hepatol* 2007;5:1282–90.
- 124 Daniels JA, Lederman HM, Maitra A, *et al.* Gastrointestinal tract pathology in patients with common variable immunodeficiency (CVID): a clinicopathologic study and review. *Am J Surg Pathol* 2007;31:1800–12.
- 125 Shetty S, Anjarwalla SM, Gupta J, *et al.* Focal active colitis: a prospective study of clinicopathological correlations in 90 patients. *Histopathology* 2011;59:850–6.
- 126 Greenson JK, Stern RA, Carpenter SL, *et al.* The clinical significance of focal active colitis. *Hum Pathol* 1997;28:729–33.
- 127 Warren BF, Shepherd NA. Surgical pathology of the intestine: the pelvic ileal reservoir and diversion proctocolitis. In: Lowe DG, Underwood JCE, eds. *Recent advances in histopathology.* London: Churchill Livingstone; 1999:63–88.
- 128 Shepherd NA, Jass JR, Duval I, *et al.* Restorative proctocolectomy with ileal reservoir: pathological and histochemical study of mucosal biopsy specimens. *J Clin Pathol* 1987;40:601–7.
- 129 Sandborn WJ, Tremaine WJ, Batts KP, *et al.* Pouchitis after ileal pouch-anal anastomosis: a Pouchitis Disease Activity Index. *Mayo Clin Proc* 1994;69:409–15.
- 130 Price AB. Overlap in the spectrum of non-specific inflammatory bowel disease—'colitis indeterminate'. *J Clin Pathol* 1978;31:567–77.
- 131 Yantiss RK, Sapp HL, Farraye FA, *et al.* Histologic predictors of pouchitis in patients with chronic ulcerative colitis. *Am J Surg Pathol* 2004;28:999–1006.
- 132 Chong SK, Blackshaw AJ, Boyle S, *et al.* Histological diagnosis of chronic inflammatory bowel disease in childhood. *Gut* 1985;26:55–9.
- 133 Attanoos RL, Bull AD, Douglas-Jones AG, *et al.* Phraseology in pathology reports. A comparative study of interpretation among pathologists and surgeons. *J Clin Pathol* 1996;49:79–81.
- 134 Eaden J, Abrams K, McKay H, *et al.* Inter-observer variation between general and specialist gastrointestinal pathologists when grading dysplasia in ulcerative colitis. *J Pathol* 2001;194:152–7.
- 135 Riddell RH, Goldman H, Ransohoff DF, *et al.* Dysplasia in inflammatory bowel disease: standardized classification with provisional clinical applications. *Hum Pathol* 1983;14:931–68.
- 136 Kerkhof M, van Dekken H, Steyerberg EW, *et al.* Grading of dysplasia in Barrett's oesophagus: substantial interobserver variation between general and gastrointestinal pathologists. *Histopathology* 2007;50:920–7.



Inflammatory bowel disease biopsies: updated British Society of Gastroenterology reporting guidelines

Roger M Feakins

J Clin Pathol published online September 2, 2013

Updated information and services can be found at:
<http://jcp.bmj.com/content/early/2013/09/25/jclinpath-2013-201885>

These include:

Supplementary Material

Supplementary material can be found at:
<http://jcp.bmj.com/content/suppl/2013/09/02/jclinpath-2013-201885.DC1.html>

References

This article cites 127 articles, 30 of which you can access for free at:
<http://jcp.bmj.com/content/early/2013/09/25/jclinpath-2013-201885#BIBL>

Email alerting service

Receive free email alerts when new articles cite this article. Sign up in the box at the top right corner of the online article.

Topic Collections

Articles on similar topics can be found in the following collections

[Editor's choice](#) (118)
[Clinical diagnostic tests](#) (794)
[Inflammatory bowel disease](#) (40)
[Colon cancer](#) (222)
[Endoscopy](#) (28)
[Immunology \(including allergy\)](#) (1622)
[Inflammation](#) (167)

Notes

To request permissions go to:
<http://group.bmj.com/group/rights-licensing/permissions>

To order reprints go to:
<http://journals.bmj.com/cgi/reprintform>

To subscribe to BMJ go to:
<http://group.bmj.com/subscribe/>