

Breath analysis during one-lung ventilation in cancer patients

Running Head: Breath analysis during one-lung ventilation

Sabine Kischkel ▪ **Wolfram Miekisch** ▪ **Patricia Fuchs** ▪ **Jochen K. Schubert**

Sabine Kischkel (✉) ▪ Wolfram Miekisch ▪ Patricia Fuchs ▪ Jochen K. Schubert
Department of Anaesthesiology and Intensive Care Medicine, University Rostock,
Schillingallee 35, 18057 Rostock, Germany
Email: sabine.kischkel@uni-rostock.de

Keywords: breath gas analysis, one-lung ventilation, double-lumen endotracheal tube, SPME-GC-MS

ABSTRACT

Background: Non-invasive breath analysis may provide valuable information for cancer recognition if disease specific volatile biomarkers could be identified. In order to compare non-diseased and diseased tissue in vivo this study took advantage of the special circumstances of one-lung ventilation (OLV) during lung-surgery.

Methods: 15 cancer patients undergoing lung resection with OLV were enrolled. From each patient alveolar breath samples were taken separately from healthy and diseased lungs before and after tumour resection. Volatile substances were preconcentrated by means of solid-phase microextraction, separated, identified and quantified by means of GC-MS.

Results: Different classes of volatile substances could be identified according to their concentration profiles. Due to prolonged fasting and activation of lipolysis concentrations of endogenous acetone significantly increased during surgery. Exogenous substances such as benzene or cyclohexanone showed typical washout exhalation kinetics. Exhaled concentrations of potentially tumour associated substances such as butane or pentane were different for non-diseased and diseased lungs and decreased significantly after surgery.

Conclusion: Separate analysis of volatile substances exhaled from healthy and diseased lungs in the same patient, together with thorough consideration of substance origins and exhalation kinetics offers unique opportunities of biomarker recognition and evaluation.

INTRODUCTION

In contrast to blood analysis or tissue biopsies analysis of exhaled breath is completely non-invasive, and sampling of breath can be done repeatedly and frequently without any burden to the patient and without any risk for the staff collecting the samples. In recent years potential applications of breath analysis have been suggested for detection of lung diseases, recognition of inflammatory and malignant processes in the body, as well as for detection of special diseased states such as allograft rejection and renal failure [1-5]. But up to now, none of these markers or marker sets reached clinical relevance in terms of reliable disease recognition and sufficient sensitivity and specificity. Reasons are the influence of inspired concentrations, prior intake and actual excretion of environmental contaminations and the huge inter- and intra-individual variations of exhaled substance concentrations [6-8]. Because of the latter, comparison of substance exhalation between different individuals often yielded ambiguous or contradictory results.

A current treatment option for primary or secondary lung tumours consists of lung volume reduction surgery to improve lung function, health-related quality of life, and physical exercise capacity. Routine surgical and anaesthetic procedures include one-lung ventilation (OLV) with a double-lumen endotracheal tube (DLT). In order to improve intraoperative conditions the diseased lung is not ventilated during surgery. Commonly used left sided DLTs enable complete separation of left and right lungs, in the way that lungs can be ventilated independently. In addition, mixing of exhaled gas from left and right lungs can be prevented.

This study was intended to take advantage of the special circumstances of one-lung ventilation. When patients suffering from lung tumours are mechanically ventilated

via DLT during lung-surgery volatile substances potentially emanated from non-diseased and diseased tissue could be compared directly in vivo.

The following issues were addressed in detail:

- i. Which differences exist in exhaled breath composition of cancer patients before and after surgical removal of the lung tumour? If differences can be recognized, will the underlying substances be endogenous or exogenous compounds?
- ii. Are there any differences in exhaled substance concentrations between healthy and diseased lungs in the same patient?

MATERIAL AND METHODS

Patients

After approval by the local ethics committee and after having obtained written informed consent 15 cancer patients were enrolled into the study. 12 patients had primary lung tumours; three suffered from pulmonary metastases of renal, prostatic and uterus carcinoma, respectively. All patients had a smoking history. All patients had thoracotomy and tumour resection. One-lung ventilation (OLV) was instituted during surgery. For that purpose (left sided) double-lumen tubes (DLT) were introduced into patients' tracheas. During surgery patients were brought into a lateral position in the way that the diseased side was up. Physiological parameters such as body weight, body height, blood pressure, and heart rate were recorded. Demographic characteristic of patients are summarized in Table 1.

Breath gas sampling

Breath samples and arterial blood samples were taken after induction of anaesthesia before lung-surgery started and after the end of lung-surgery. As patients had been intubated with double-lumen endotracheal tubes (Robertshaw tube, Mallinckrodt Medical, Ireland), samples were drawn separately from healthy and diseased lungs.

Detailed study design and breath gas sampling are shown in figure 1. A sterilized stainless steel T-piece and the measuring cuvette of a fast-responding mainstream capnometer (Capnogard, Novamatrix, Wallingford, USA) had been incorporated into the respiratory circuit near the connectors of the double-lumen endotracheal tubes. As described before [6, 9] 15 mL of alveolar gas were withdrawn from the respiratory circuit under visual control of expired PCO_2 in the way that gas collection only took place during the alveolar phase of expiration. Alveolar samples from the right lung were taken from the tracheal lumen of the left-sided DLT, while both lungs were ventilated via the DLT. Samples from the left lung were taken from the endobronchial lumen of the DLT. Inspired samples were taken from medical synthetic air.

In one patient additional alveolar breath gas samples were taken on the day before surgery under spontaneous breathing [8]. Inspired samples from this patient were taken from ambient air in parallel.

To assess contaminations coming from the DLT material gas samples were taken from clean synthetic air that had passed through an isolated double-lumen endotracheal tube. In this experimental setup a new, unused DLT was mounted into a respiratory circuit which was not connected to a patient.

All gas samples were immediately transferred into 20 mL evacuated sealed glass vials (Gerstel, Muelheim an der Ruhr, Germany). At least two samples for each measurement were collected and processed within 6 h after sampling.

Analytical procedures

Volatile substances in the samples were preconcentrated by solid-phase micro extraction (SPME) as described before in detail [8]. A CTC Combi PAL SPME autosampler was used for automatic preconcentration and desorption of the volatile organic compounds. The GC-MS analyses were performed with a Varian Star 3900 CX gas chromatograph and a Varian Saturn 2100 mass ion trap spectrometer using electron impact ionisation (EI, 70 eV).

A selection of 38 volatile organic substances (hydrocarbons, ketones, aldehydes, alcohols, acetonitrile, dimethylsulfide and aromatic compounds) were quantified in the (breath) samples by means of calibrations performed in the range of 0.10 – 60.58 nmol/L (see table 2). Details of the analytical methods have been described before [8]. Briefly, linear ranges, limits of detection (LOD) and limits of quantification (LOQ) were determined using a seven point calibration with six repetitions. Substance identification was confirmed by comparing the retention times and mass spectra with those of pure standard substances.

Statistical analysis

Statistical calculations were done using SigmaStat 3.5/SigmaPlot 10.0. Multiple comparisons between data from different measurements before and after lung-surgery were performed by means of Paired t-test and Repeated Measures Analysis of Variance for normally distributed values or by means of Repeated Measures Analysis of Variance on Ranks for non-parametric data. A post hoc Student-

Newman-Keuls test was employed to detect significant differences between groups. Results are given as means and standard error of the mean (\pm SEM) or as medians and 25th – 75th percentiles, as appropriate. A $p < 0.05$ was considered to be statistically significant. In order to reduce inter-individual variations and to render results comparable VOC concentrations in the breath samples were normalized to exhaled concentrations obtained in the samples which were taken from the non-diseased lung directly after intubation before lung-surgery started.

RESULTS

Table 2 shows LOD, LOQ and detection ranges for 38 selected volatile organic compounds.

Table 3 shows quantitative data of all compounds present in measurable concentrations in patients' exhaled breath. Five compounds had significantly different concentrations in healthy and diseased lungs or showed differences in exhaled concentrations when pre or postoperative concentrations were determined.

Normalized acetone concentrations significantly increased during surgery. Normalized cyclohexanone, benzene, butane and pentane concentrations decreased significantly when pre and post surgery levels were compared. Exhaled concentrations of all other 33 compounds did not show any statistically significant differences between healthy and diseased lungs, neither before nor after thoracic surgery. A more detailed presentation of exhaled concentrations is shown in figure 2 and table 3.

Ratios of arterial PCO_2 and end tidal PCO_2 showed no differences when PCO_2 exhalation from healthy and diseased lungs was compared before and after surgery ($p = 0.107$). In healthy lungs mean $P_aCO_2/P_{et}CO_2$ (\pm SEM) was 1.09 (\pm 0.04) before

surgery and 1.16 (± 0.06) after surgery. In diseased lungs mean $P_aCO_2/P_{et}CO_2$ (\pm SEM) was 1.07 (± 0.04) before surgery and 1.21 (± 0.08) after surgery.

Figure 3 shows mean exhaled acetone concentrations and mean arterial blood dextrose concentrations before and after lung-surgery. Acetone concentrations were significantly higher after surgery than after induction of anaesthesia ($p=0.003$). Blood dextrose concentrations showed a tendency to increase after surgery ($p=0.073$).

In samples from air that had been driven through an isolated DLT mean substance concentrations were 73.10 nmol/L for isopropanol, 11.26 nmol/L for cyclohexanone, 0.19 nmol/L for heptane and 0.17 nmol/L for 2-butanone. All other compounds could not be detected in these samples. Figure 4 shows exhaled cyclohexanone and isopropanol concentrations in ambient air and substance concentrations in air samples from an isolated DLT. In addition, cyclohexanone and isopropanol concentrations from one patient under spontaneous breathing and under mechanical ventilation are shown.

DISCUSSION

Separate gas sampling from non-diseased and diseased lungs was performed in patients undergoing lung-surgery for tumour resection. Different classes of substances could be identified according to their concentration profiles. Endogenous blood borne substances such as isoprene were exhaled independently from tumours and surgery. Endogenous blood borne substances such as acetone exhibited concentration profiles linked to metabolism. Exogenous blood borne substances such as benzene showed characteristic wash out kinetics. Exogenous substances coming out of ambient air or tubing such as cyclohexanone might have erroneously been taken for cancer biomarkers. Endogenous blood borne substances such as butane and pentane might be related to tumour growth and tumour resection, respectively.

Results of this study emphasize the importance of unequivocal identification of substance origins and biochemical pathways when new biomarkers are to be identified.

Substances analyzed in this study were chosen according to actual knowledge on breath biomarkers. A special focus was set onto substances which have been described as potential cancer biomarkers, such as (branched) hydrocarbons [10] and oxygenated compounds [3]. In contrast to some recent studies branched hydrocarbons could not be detected in traceable concentrations in our patients, although corresponding LODs of our method were in the range of some pmol/L (ppt-ppqV). In the cited studies, most of these substances were found in higher concentrations in inspired air than in expired air. In addition, branched hydrocarbons are known to emanate from plastic materials or paintings [11, 12]. Hence, the origin of this type of compounds must be assumed to be contamination rather than endogenous production. Acetonitrile and aromatic compounds representing smoking related compounds [4] were found in typical concentrations in patients' exhaled air. Concentrations of these compounds did not show any differences between diseased and healthy lungs. Dimethylsulfide is known to be generated by gingival bacteria [13] and, therefore, was only detectable in very low concentrations in exhaled air from intubated and mechanically ventilated patients. Exhaled aldehyde concentrations were comparable in samples from healthy and diseased lungs. A possible reason for that may be seen in the relatively high inspired concentrations of these compounds. Finally, five substances showed significant differences between diseased and healthy lungs or were different when pre and post surgery levels were compared. These substances were acetone, butane, pentane, cyclohexanone and benzene.

As acetone is formed through decarboxylation of acetoacetate its concentrations in blood depend on dextrose metabolism and on the extent of lipolysis [14]. Stress induced increases in blood dextrose are known from clinical studies on outcome and serum dextrose control [15]. Lung-surgery lasted 1.5 to 5.0 hours. Therefore, exhaled acetone concentrations were additionally increased through lipolysis and ketogenesis after prolonged fasting. This phenomenon has already been observed by Mieth and Pabst et al. in patients undergoing cardiac surgery [16, 17]. Hence, acetone represents an interesting metabolic marker but is not a cancer specific substance. As acetone generation is not uniquely linked to dextrose metabolism but also depends on the extent of lipolysis, exhaled acetone exhibited a more steep increase than blood dextrose.

According to their concentration profiles butane, pentane, cyclohexanone, benzene and heptane might have been linked to tumour growth and tumour resection, respectively.

Butane and pentane has been related to oxidative stress and bronchial carcinoma respectively [10]. Oxidative stress is known as a fundamental mechanism associated with cancer growth. In relation to tumour growth and resection, the time profile of butane and pentane concentrations may be explained as follows: i) butane and pentane being linked to tumour growth its concentrations were maximal in the diseased lungs before resection; ii) butane and pentane generated from the tumour could be given off directly into the alveoli but could also be secreted into the blood stream. For that reason exhaled concentrations from the non-diseased lungs need not necessarily be zero, iii) after resection exhaled butane and pentane concentrations dropped most in the formerly diseased lung from which the tumour had been removed. From these findings one might deduce that butane and pentane

represents a marker for tumour growth in the lung. A similar tendency might be seen in the concentration profiles of heptane. As an n-alkane this substance has also already been linked to bronchial cancer [10]. Since non-polar substances such as butane, pentane or heptane can be stored in lipid tissues for quite a long time it is difficult to say which amount of time would have been necessary for the exhaled concentrations to fall to “zero”. Hence, the slow drop of exhaled butane, pentane and heptane concentrations would not a priori exclude these substances from being linked to tumour growth. Confirmation in a larger number of patients and meticulous tracing of biochemical pathways will be necessary before these substances can be proclaimed as biomarkers of cancerous disease.

Misthøset al. reported that oxidative stress may be generated by one-lung ventilation itself [18]. In their study, severe oxidative burden occurred a few minutes after reexpansion of the atelectatic lung. In contrast to these results concentrations of all oxidative stress markers decreased after surgery and lung reexpansion in our study. This might be due to the fact that breath gas sampling was not performed immediately after reexpansion of the lung.

Despite its seemingly tumour specific concentration profile cyclohexanone is not a cancer biomarker but simply comes off the material of the Robertshaw tubes. As cyclohexanone emanated from the tubes, concentrations changes typically mirrored wash out kinetics of a substance that comes from inspired air. Since the diseased lung was not ventilated during surgery wash out at the end of surgery was not complete when compared to the non-diseased lung which had constantly been ventilated. Cyclohexanone is an organic solvent used in the production of medical devices made of polyvinyl chloride, such as intravenous fluid bags, endotracheal tubes, extracorporeal circulation tubing, extracorporeal membrane oxygenation

devices, and hemodialysis membranes. The toxicity of polyvinyl chloride and cyclohexanone has been assessed in animal models. The substance may cause decreased cardiac and cell viability [19, 20], depressed cardiac contractility [19, 21], neurological abnormalities [22], edema [19], and death or moribund state [19, 22]. Without consideration of substance origins and without taking into account potential contaminations from ambient air or tubing materials cyclohexanone would certainly have been mistaken as a potential biomarker.

Benzene represents a compound typically occurring in cigarette smoke and being stored in different body compartments [4, 23-25]. In this study all patients were ex-smoker. During lung-surgery substance concentrations followed classical wash out kinetics.

Isopropanol represents a typical ingredient of disinfectants. Hence, it is not surprising that isopropanol concentrations were extremely high in samples from the air that had passed through an isolated DLT.

Isoprene could be detected in all investigated samples. Since isoprene is linked to cholesterol biosynthesis [26] its exhalations did not depend on surgery or presence of tumour in any way.

Exhaled substance concentrations showed considerable inter-individual variations. For that reason concentrations were normalized in the way that each patient served as his own control and effects of inter-individual variation were reduced.

As for every other method applied in breath analysis there are limitations of the SPME-GC-MS analysis e.g. in terms of LOD/LOQ. However, for most of the compounds under investigation LOD/LOQs were in the low nmol/L (pptV) range and, therefore, are well comparable with or even better than those of other methods

published in the field. In addition, virtually all compounds will be detectable from the environment when concentration ranges below pptV are considered.

One-lung ventilation (OLV) is widely used in thoracic surgery. During lung-surgery the patients are laterally positioned onto the side of the healthy lung and the operated lung remains completely atelectatic for a period of time. As a consequence, the non-ventilated lung is also hypoperfused due to hypoxic pulmonary vasoconstriction [27]. It is difficult to foresee which kind of ventilation/perfusion mismatch might be predominant after reexpansion of the operated lung. Shunt perfusion due to persistent atelectasis might as well occur as dead space ventilation due to patients' lateral position. For that reason, dead space correction by means of arterial and endtidal carbon dioxide measurement will produce erroneous results when shunt perfusion prevails. In addition, exhalation of substances with low water solubility, such as butane, pentane and heptane does not depend on dead space ventilation in the same way as carbon dioxide. For these reasons, we did not apply dead space correction by means of the ratio of end tidal and arterial PCO_2 . In addition, the extent of dead space ventilation in terms of mean $P_aCO_2/P_{et}CO_2$ was not different before and after lung-surgery.

In conclusion, one-lung ventilation for resection of bronchial carcinoma proved to be a valuable setting for assessing potentially tumour specific volatile substances. Separate analysis of volatile substances exhaled from healthy and diseased lungs in the same patient, together with thorough consideration of substance origins and exhalation kinetics offers unique opportunities of biomarker recognition and evaluation.

ACKNOWLEDGMENT

This research was supported by the European Commission through the STREP project BAMOD (Sixth Frame Program, project no LSHC-CT-2005-019031).

REFERENCES

1. Buszewski B, Keszy M, Ligor T, Amann A. Human exhaled air analytics: biomarkers of diseases. *Biomed Chromatogr* 2007: 21(6): 553-566.
2. Chan HP, Lewis C, Thomas PS. Exhaled breath analysis: novel approach for early detection of lung cancer. *Lung Cancer* 2009: 63(2): 164-168.
3. Fuchs P, Loeseke C, Schubert JK, Miekisch W. Breath gas aldehydes as biomarkers of lung cancer. *Int J Cancer* 2009: 126(11): 1663-1670.
4. Gordon SM, Wallace LA, Brinkman MC, Callahan PJ, Kenny DV. Volatile organic compounds as breath biomarkers for active and passive smoking. *Environ Health Perspect* 2002: 110(7): 689-698.
5. Horvath I, Lazar Z, Gyulai N, Kollai M, Losonczy G. Exhaled biomarkers in lung cancer. *Eur Respir J* 2009: 34(1): 261-275.
6. Schubert JK, Miekisch W, Birken T, Geiger K, Noldge-Schomburg GF. Impact of inspired substance concentrations on the results of breath analysis in mechanically ventilated patients. *Biomarkers* 2005: 10(2-3): 138-152.
7. Pleil JD. Influence of systems biology response and environmental exposure level on between-subject variability in breath and blood biomarkers. *Biomarkers* 2009.
8. Kischkel S, Miekisch W, Sawacki A, Straker EM, Trefz P, Amann A, Schubert JK. Breath biomarkers for lung cancer detection and assessment of smoking related effects - confounding variables, influence of normalization and statistical algorithms. *Clin Chim Acta* 2010: 411(21-22): 1637-1644.
9. Birken T, Schubert J, Miekisch W, Noldge-Schomburg G. A novel visually CO2 controlled alveolar breath sampling technique. *Technol Health Care* 2006: 14(6): 499-506.
10. Phillips M, Cataneo RN, Cummin AR, Gagliardi AJ, Gleeson K, Greenberg J, Maxfield RA, Rom WN. Detection of lung cancer with volatile markers in the breath. *Chest* 2003: 123(6): 2115-2123.
11. Cox SS, Little JC, Hodgson AT. Measuring concentrations of volatile organic compounds in vinyl flooring. *J Air Waste Manag Assoc* 2001: 51(8): 1195-1201.
12. Fortmann R, Roache N, Chang JC, Guo Z. Characterization of emissions of volatile organic compounds from interior alkyd paint. *J Air Waste Manag Assoc* 1998: 48(10): 931-940.

13. Van den Velde S, van Steenberghe D, Van Hee P, Quirynen M. Detection of odorous compounds in breath. *J Dent Res* 2009; 88(3): 285-289.
14. Deng C, Li N, Wang X, Zhang X, Zeng J. Rapid determination of acetone in human blood by derivatization with pentafluorobenzyl hydroxylamine followed by headspace liquid-phase microextraction and gas chromatography/mass spectrometry. *Rapid Commun Mass Spectrom* 2005; 19(5): 647-653.
15. van den Berghe G, Wouters P, Weekers F, Verwaest C, Bruyninckx F, Schetz M, Vlasselaers D, Ferdinande P, Lauwers P, Bouillon R. Intensive insulin therapy in the critically ill patients. *N Engl J Med* 2001; 345(19): 1359-1367.
16. Pabst F, Miekisch W, Fuchs P, Kischkel S, Schubert JK. Monitoring of oxidative and metabolic stress during cardiac surgery by means of breath biomarkers: an observational study. *J Cardiothorac Surg* 2007; 2: 37.
17. Mieth M, Schubert JK, Groger T, Sabel B, Kischkel S, Fuchs P, Hein D, Zimmermann R, Miekisch W. Automated Needle Trap Heart-Cut GC/MS and Needle Trap Comprehensive Two-Dimensional GC/TOF-MS for Breath Gas Analysis in the Clinical Environment. *Anal Chem* 2010; 82(6): 2541-2551.
18. Misthos P, Katsaragakis S, Milingos N, Kakaris S, Sepsas E, Athanassiadi K, Theodorou D, Skottis I. Postresectional pulmonary oxidative stress in lung cancer patients. The role of one-lung ventilation. *Eur J Cardiothorac Surg* 2005; 27(3): 379-382; discussion 382-373.
19. Gupta PK, Lawrence WH, Turner JE, Autian J. Toxicological aspects of cyclohexanone. *Toxicol Appl Pharmacol* 1979; 49(3): 525-533.
20. Cruickshank CN, Hooper C, Lewis HB, Macdougall JD. The toxicity of rubbers and plastics used in transfusion-giving sets. *J Clin Pathol* 1960; 13: 42-50.
21. Meijler FL, Willebrands AF, Jr., Durrer D. [Influence of plastic material (polyvinyl chloride) on the isolated and surviving heart of the rat]. *Dia Med* 1960; 32: 2882-2886.
22. Koeflerl MT, Miller TR, Fisher JD, Martis L, Garvin PJ, Dorner JL. Influence of concentration and rate of intravenous administration on the toxicity of cyclohexanone in beagle dogs. *Toxicol Appl Pharmacol* 1981; 59(2): 215-229.
23. Alonso M, Castellanos M, Martin J, Sanchez JM. Capillary thermal desorption unit for near real-time analysis of VOCs at sub-trace levels. Application to the analysis of environmental air contamination and breath samples. *J Chromatogr B* 2009; 877(14-15): 1472-1478.

24. Van Berkel JJ, Dallinga JW, Moller GM, Godschalk RW, Moonen E, Wouters EF, Van Schooten FJ. Development of accurate classification method based on the analysis of volatile organic compounds from human exhaled air. *J Chromatogr B* 2008; 861(1): 101-107.
25. Perbellini L, Princivale A, Cerpelloni M, Pasini F, Brugnone F. Comparison of breath, blood and urine concentrations in the biomonitoring of environmental exposure to 1,3-butadiene, 2,5-dimethylfuran, and benzene. *Int Arch Occup Environ Health* 2003; 76(6): 461-466.
26. Deneris ES, Stein RA, Mead JF. In vitro biosynthesis of isoprene from mevalonate utilizing a rat liver cytosolic fraction. *Biochem Biophys Res Commun* 1984; 123(2): 691-696.
27. Sylvester JT. Hypoxic Pulmonary Vasoconstriction : A Radical View. *Circ Res* 2001; 88(12): 1228-1230.

TABLE 1: Patients' demographics and diagnoses.

No.	Age	Gender	Tumour location	Tumour histology	Surgery
1	62	male	Right (S3)	Neuroendocrine ca.	Tumour resection
2	68	male	Right upper lobe	NSCLC (squamous cell ca.)	Lobectomy
3	74	male	Right (S3)	NSCLC (squamous cell ca.)	Atypical resection
4	70	male	Right (S1, S3)	NSCLC (adenous ca.)	Atypical resection
5	78	male	Right upper lobe	NSCLC (squamous cell ca.)	Lobectomy
6	72	male	Right middle lobe	NSCLC(squamous cell ca.)	Lobectomy
7	74	male	Right inferior lobe	NSCLC (squamous cell ca.)	Lobectomy
8	74	male	Left inferior lobe	NSCLC (squamous cell ca.)	Lobectomy
9	61	male	Right (S1, S7, S4)	Metastases of renal ca.	Atypical resection
10	73	male	Left lobe	NSCLC (squamous cell ca.)	Tumour resection, decortication
11	70	male	Right (S10)	NSCLC (squamous cell ca.)	Atypical resection
12	72	male	Left (S1, S2)	Metastases of prostatic ca.	Atypical resection
13	79	male	Right inferior lobe	NSCLC (large cell ca.)	Lobectomy
14	48	female	Left upper lobe	Metastases of cervix ca.	Atypical resection
15	73	female	Right upper lobe	NSCLC (adenous ca.)	Lobectomy

S: lung segment; NSCLC: non-small cell lung cancer; ca.: carcinoma.

TABLE 2: Limit of detection (LOD), limit of quantification (LOQ) and detection ranges for volatile organic compounds in exhalation samples and samples from synthetic air from the central gas supply.

Substance	LOD [nmol/L]	LOQ [nmol/L]	detection range in exhalation samples [nmol/L]	detection range in samples from synthetic air [nmol/L]
Isoprene	0.024	0.098	1.54 - 44.15	0.13 - 9.40
Acetone	0.266	0.985	2.93 - 197.86	0.99 - 1.71
2-Butanone	0.043	0.158	0.16 - 14.28	0.15 - 1.55
Cyclohexanone	0.214	1,252	1.80 - 111.98	n.d.
Dimethyl sulfide	0.075	0.270	d.	n.d.
Acetonitrile	0.492	1,716	1.72 - 3.10	n.d.
Ethanol	1,305	5,098	5.34 - 373.71	5.10 - 13.45
Isopropanol	0.205	0.717	2.87 - 212.69	1.42 - 58.80
Acetaldehyde	0.363	1,280	1.29 - 146.31	d.
Propanal	0.094	0.341	0.34 - 3.20	0.34 - 0.60
Butanal	0.042	0.161	0.16 - 2.07	0.55 - 0.97
Pentanal	0.121	0.436	0.44 - 4.16	1.00 - 1.22
Hexanal	0.083	0.305	0.31 - 17.23	0.31 - 0.79
Heptanal	0.029	0.116	n.d.	n.d.
Octanal	0.099	0.365	n.d.	n.d.
2-Propenal	0.105	0.398	0.40 - 9.48	n.d.
2-Butenal	0.235	0.872	n.d.	n.d.
Propane	0.096	0.350	0.36 - 0.49	n.d.
Butane	0.034	0.131	0.13 - 3.27	n.d.
Pentane	0.119	0.431	0.43 - 2.23	n.d.
Hexane	0.029	0.114	0.12 - 1.14	0.12 - 0.16
Heptane	0.035	0.129	0.13 - 0.42	0.13 - 0.40
Butane, 2-methyl-	0.053	0.191	d.	n.d.
Propanal, 2-methyl-	0.119	0.422	n.d.	n.d.
Butane, 2,2-dimethyl-	0.152	0.522	n.d.	n.d.
Butane, 2,3-dimethyl-	0.091	0.327	n.d.	n.d.
Pentane, 2-methyl-	0.079	0.284	d.	n.d.
Pentane, 3-methyl-	0.047	0.177	n.d.	n.d.
Pentane, 2,2-dimethyl-	0.036	0.134	n.d.	n.d.
Pentane, 2,4-dimethyl-	0.028	0.108	n.d.	n.d.
Pentane, 3,3-dimethyl-	0.086	0.307	n.d.	n.d.
Hexane, 2-methyl-	0.003	0.014	n.d.	n.d.
Cyclohexane	0.179	0.619	0.62 - 1.13	n.d.
Benzene	0.029	0.112	0.12 - 0.21	n.d.
Toluene	0.055	0.199	0.20 - 0.75	n.d.
Chlorobenzene	0.059	0.228	n.d.	n.d.
Benzene, 1,2-dimethyl-	0.082	0.310	n.d.	n.d.
Benzene, 1,2-dichloro-	0.093	0.348	n.d.	n.d.

n.d.: not detected (i.e. value was below LOD); d.: detected (i.e. value was between LOD and LOQ).

TABLE 3: Mean values (\pm SEM) or medians (25th-75th percentiles) of normalized VOC concentrations including comparison between substance exhalation from non-diseased and diseased lungs before and after surgery. Results were normalized to values obtained from samples taken from non-diseased lungs before surgery (1a).

Substance	n	diseased before surgery (1b)	non-diseased after surgery (2a)	diseased after surgery (2b)	1a vs. 1b	1a vs. 2a	1b vs. 2b	2a vs. 2b
		mean (\pm SEM) or median (25 th -75 th percentiles)				p-value		
Acetone	15	0.92 (\pm 0.02)	2.54 (\pm 0.27)	2.34 (\pm 0.29)	0.936	<0.001	<0.001	0.389
Cyclohexanone	15	1.12 (0.95 - 1.50)	0.23 (0.17 - 0.36)	0.55 (0.40 - 0.59)	>0.05	<0.05	<0.05	<0.05
Benzene	14	0.97 (\pm 0.05)	0.79 (\pm 0.08)	0.75 (\pm 0.09)	0.706	0.012	0.008	0.606
Butane	14	0.89 (\pm 0.09)	0.60 (\pm 0.09)	0.41 (\pm 0.08)	0.234	<0.001	<0.001	0.05
Pentane	6	1.26 (\pm 3.67)	0.65 (\pm 1.21)	0.09 (\pm 0.07)	>0.05	>0.05	>0.05	0.046
Heptane	14	1.14 (\pm 0.12)	0.78 (\pm 0.19)	0.77 (\pm 0.19)	0.065	0.065	0.065	0.065
Isoprene	15	1.04 (\pm 0.04)	1.19 (\pm 0.12)	1.07 (\pm 0.14)	0.268	0.268	0.268	0.268
2-Butanone	11	1.09 (0.65 - 1.40)	0.78 (0.48 - 1.75)	0.72 (0.47 - 1.80)	0.896	0.896	0.896	0.896
Acetonitrile	7	1.06 (\pm 0.20)	1.38 (\pm 0.32)	0.92 (\pm 0.17)	0.255	0.255	0.255	0.255
Ethanol	15	0.91 (0.76 - 1.24)	0.82 (0.20 - 1.99)	1.12 (0.23 - 2.03)	0.662	0.662	0.662	0.662
Isopropanol	15	1.02 (0.96 - 1.30)	0.84 (0.36 - 2.10)	0.61 (0.34 - 1.51)	0.404	0.404	0.404	0.404
Acetaldehyde	7	1.01 (0.55 - 1.92)	0.41 (0.17 - 0.71)	0.89 (0.43 - 1.93)	0.156	0.156	0.156	0.156
Propanal	9	0.92 (\pm 0.14)	0.63 (\pm 0.23)	0.60 (\pm 0.17)	0.172	0.172	0.172	0.172
Butanal*	2	0.91 (0.57 - 1.24)	1.18 (1.10 - 1.25)	1.11 (1.10 - 1.13)	–	–	–	–
Pentanal*	2	0.76 (0.00 - 1.51)	1.63 (0.76 - 2.49)	0.52 (0.00 - 1.04)	–	–	–	–
Hexanal	11	0.91 (\pm 0.10)	0.83 (\pm 0.12)	0.97 (\pm 0.13)	0.592	0.592	0.592	0.592

2-Propenal*	2	0.98 (0.89 - 1.07)	0.17 (0.00 - 0.35)	0.25 (0.00 - 0.50)	–	–	–	–
Propane*	2	1.22 (1.01 - 1.44)	0.67 (0.00 - 1.34)	0.69 (0.00 - 1.38)	–	–	–	–
Hexane	12	1.13 (\pm 0.16)	1.06 (\pm 0.23)	1.01 (0.20)	0.925	0.925	0.925	0.925
Cyclohexane	8	1.08 (\pm 0.08)	1.00 (\pm 0.22)	1.11 (\pm 0.22)	0.908	0.908	0.908	0.908
Toluene	15	1.01 (\pm 0.04)	0.95 (\pm 0.09)	0.88 (\pm 0.08)	0.270	0.270	0.270	0.270

n: number of patients in which the substances could be detected; 1a: non-diseased lungs before surgery; 2a: non-diseased lungs after surgery; 1b: diseased lungs before surgery; 2b: diseased lungs after surgery; *: p-value are not shown when n <6.

FIGURE LEGENDS

FIGURE 1: Schematic drawing of distinct breath gas sampling from non-diseased and diseased lungs before and after surgery.

1a: manual breath gas sampling from non-diseased lungs before surgery;

2a: manual breath gas sampling from non-diseased lungs after surgery;

1b: manual breath gas sampling from diseased lungs before surgery;

2b: manual breath gas sampling from diseased lungs after surgery

T: stainless steel T-pieces with Luer Lock adapter and gas tight syringe

S: CO₂-measuring cuvette.

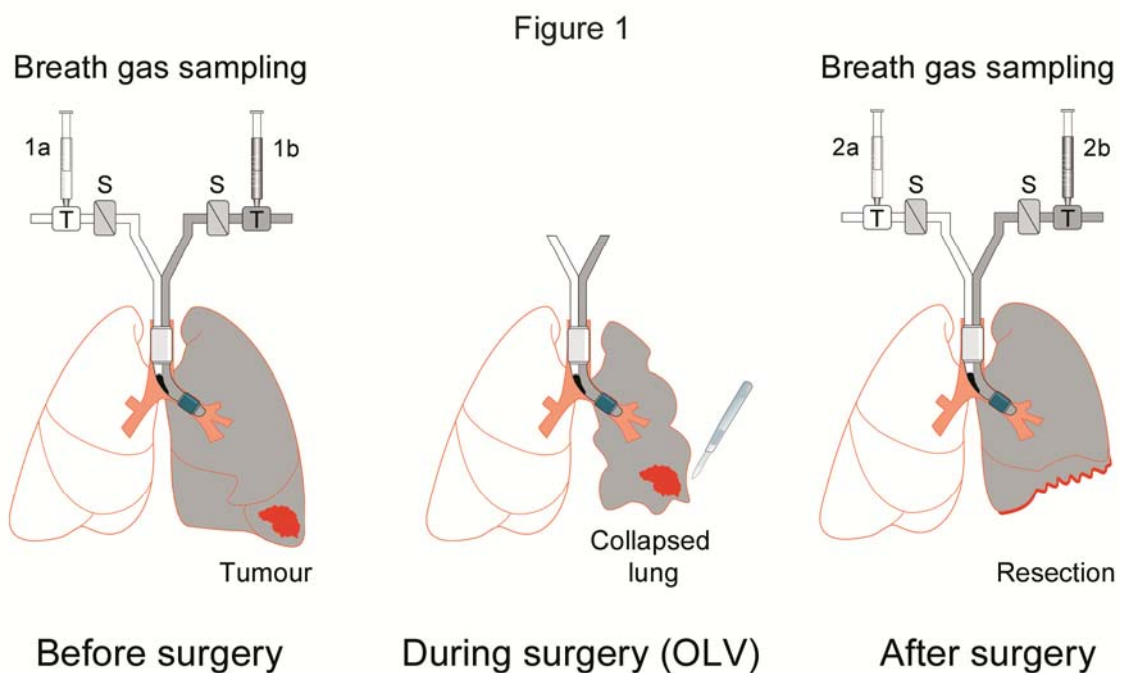


FIGURE 2: Mean values of exhaled acetone, cyclohexanone, benzene, butane, pentane, heptane and isoprene. Results were normalized to the values obtained from non-diseased lungs before surgery (1a).

+ : non-diseased lungs before surgery;

x : diseased lungs before surgery;

⊕ : non-diseased lungs after surgery;

☒ : diseased lungs after surgery;

* : normality test failed

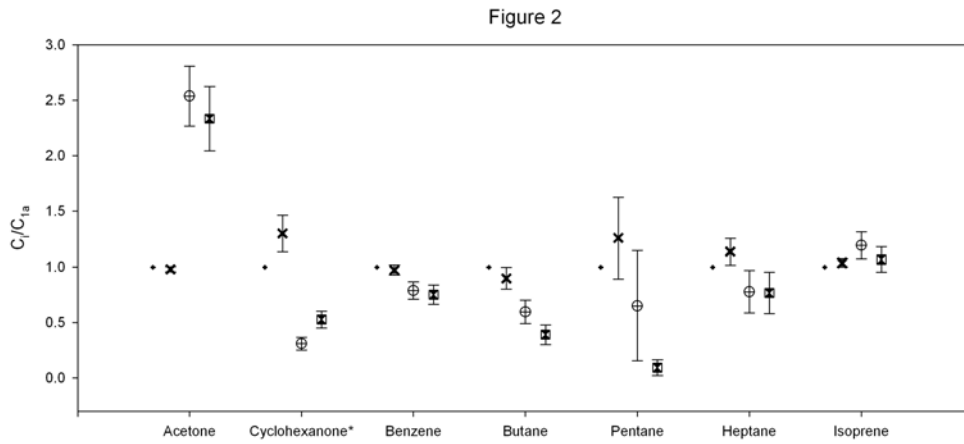


FIGURE3: Mean values of exhaled acetone concentrations and blood dextrose concentrations before and after surgery.

□: exhaled acetone concentrations

●: blood dextrose concentrations

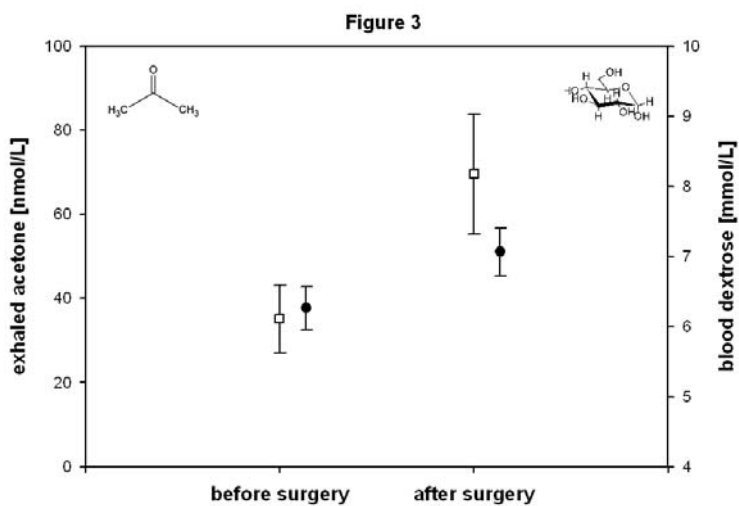


FIGURE 4: Results from one patient, who had been examined under spontaneous breathing on the day before surgery and under mechanical ventilation during lung resection on the following day. a) cyclohexanone concentrations and b) isopropanol concentrations in ambient air, in expired air under spontaneous breathing, in medical synthetic air that had passed through an isolated DLT, in expired air before and after surgery under mechanical ventilation.

White bars: non-diseased lung; grey bars: diseased lung.

