

SPECIAL ISSUE
REVIEW

Glycine receptors: recent insights into their structural organization and functional diversity

Heinrich Betz and Bodo Laube

*Abteilung Neurochemie, Max-Planck-Institut für Hirnforschung, Frankfurt am Main, Germany***Abstract**

Strychnine-sensitive glycine receptors (GlyRs) are known to mediate synaptic inhibition in spinal cord, brainstem and other regions of the CNS. During the past 5 years, considerable progress has been made in delineating structural determinants of ligand binding and channel activation in recombinant GlyRs. Furthermore, immunohistochemical and gene inactivation studies have disclosed distinct distributions and functions of differentially expressed GlyR subtypes in retina, hippocampus and the dorsal horn of the spinal cord. Accord-

ingly, GlyRs regulate not only the excitability of motor and sensory neurones, but are also essential for the processing of photoreceptor signals, neuronal development and inflammatory pain sensitization. Hence, these receptors constitute promising targets for the development of clinically useful compounds.

Keywords: homology modelling, hyperekplexia, ligand-gated ion channel, pain sensitization, synaptic inhibition.

J. Neurochem. (2006) **97**, 1600–1610.

Glycine is the simplest amino acid and has diverse metabolic functions within the mammalian CNS. Similar to GABA, glycine serves as a neurotransmitter at inhibitory synapses, where it activates strychnine-sensitive glycine receptors (GlyRs) which, like GABA_{A/C} receptors, belong to the pentameric nicotinic acetylcholine receptor (nAChR) superfamily. Glycine furthermore acts as a co-agonist at the excitatory NMDA receptor (NMDAR), a member of the tetrameric ionotropic glutamate receptor family. Glycine levels are highest in the medulla oblongata, pons and spinal cord, regions in which GlyRs are prominently expressed. In brainstem and spinal cord, glycinergic interneurons are involved in the control of motor rhythm generation, the coordination of spinal reflex responses, and the processing of sensory signals. Spinal Ia glycinergic interneurons mediate reciprocal inhibition in stretch reflex circuits, thus allowing relaxation of antagonist muscles and coordinated contraction of agonist muscles, whereas Renshaw interneurons regulate motoneurone excitability by producing recurrent inhibition via a negative feedback system (overview in Legendre 2001).

The release of glycine into the synaptic cleft is triggered by the Ca²⁺-dependent fusion of glycine-containing synaptic vesicles with the presynaptic plasma membrane and results in the activation of postsynaptic GlyRs. These receptors respond to agonist binding by increasing the chloride conductance of the postsynaptic cell. Glycinergic synaptic currents have a complex time course, which typically

consists of a fast rising phase and a bi-exponential deactivation. The rapid rise of the postsynaptic response during synaptic transmission reflects the highly synchronous opening of multiple GlyR chloride channels by glycine released during neurotransmitter exocytosis, whereas the slower decay phase of the synaptic current is shaped by asynchronous closures of individual GlyR channels and the re-uptake of glycine into presynaptic terminals or surrounding glial processes via Na⁺-dependent glycine transporters (overview in Laube *et al.* 2002; Eulenburg *et al.* 2005). The binding of glycine to the GlyR is antagonized by strychnine, a convulsive alkaloid from the Indian tree *Strychnos nuxvomica*. Strychnine is widely used to distinguish glycinergic from GABAergic inhibition, and constitutes a unique tool for GlyR research.

Received March 8, 2006; revised manuscript received March 13, 2006; accepted March 13, 2006.

Address correspondence and reprint requests to H. Betz, Max-Planck-Institut für Hirnforschung, AK Neurochemie, Deutschordenstrasse 46, 60528 Frankfurt am Main, Germany.

E-mail: neurochemie@mpih-frankfurt.mpg.de

Abbreviations used: AchBP, soluble acetylcholine-binding protein; ECD, extracellular domain; GCL, ganglion cell layer; GlyR, glycine receptor; ICD, intracellular domain; INL, inner nuclear layer; IPL, inner plexiform layer; mIPSC, miniature inhibitory postsynaptic current; nAChR, nicotinic acetylcholine receptor; NMDAR, NMDA receptor; PGE₂, prostaglandin E₂; TMD, transmembrane domain; WT, wild type.

Novel insights into GlyR structure and ligand activation

GlyR genes and proteins

The GlyR was the first neurotransmitter receptor protein to be isolated from the mammalian CNS (reviewed in Laube *et al.* 2002; Lynch 2004). Affinity purification of the detergent-solubilized receptor on aminostyrychne-agarose yielded highly enriched preparations that contained postsynaptic GlyRs composed of α and β subunits together with gephyrin, an anchoring protein required for the postsynaptic clustering of GlyRs and major GABA_A receptor subtypes (Kneussel and Betz 2000). Originally, cross-linking experiments with affinity-purified GlyR preparations had indicated a stoichiometry of $3\alpha : 2\beta$ (reviewed in Laube *et al.* 2002). A recent study of recombinant GlyRs using co-expression of wild-type (WT) α or β subunits with an α/β tandem construct revised this stoichiometry to $2\alpha : 3\beta$ (Grudzinska *et al.* 2005) (Fig. 1). GlyR subunits display significant sequence homology to each other and, to a lesser extent, to the subunits of the nAChRs, 5-hydroxytryptamine (5-HT)₃ and GABA_{A/C} receptors, which together constitute the group I (or Cys loop) family of ligand-gated ion channels (Barnard 1992; Corringer *et al.* 2000). All these receptor proteins are comprised of a large N-terminal extracellular domain (ECD), four transmembrane segments (M1–M4), a long intracellular loop connecting M3 and M4, and a short extracellular C-terminus. Sequence homologies are particularly high within the transmembrane segments and a cysteine-bonded motif (Cys loop) located in the ECD. The second transmembrane segment, M2, lines the intrinsic ion channel which, in GlyRs and GABA_{A/C} receptors, displays a strict anion selectivity with a rank order of $\Gamma^- > \text{Br}^- > \text{Cl}^-$ and significant permeability to bicarbonate.

Up to now, four different genes (called *Glr1–4*) encoding GlyR α subunits ($\alpha 1$ – $\alpha 4$) have been identified in vertebrates (Matzenbach *et al.* 1994; Laube *et al.* 2002). Alternative splicing of exons encoding segments of the extracellular N-terminal and intracellular loop regions has been shown to further contribute to the heterogeneity of GlyR subunits (Kuhse *et al.* 1995; Lynch 2004). In addition, a recent report has provided evidence for post-transcriptional editing of the GlyR $\alpha 3$ mRNA at a single nucleotide position (Meier *et al.* 2005). This mRNA editing results in the substitution of a proline residue at position 185 by leucine in the ECD of the $\alpha 3$ subunit and increases the apparent agonist affinity of the GlyR. Therefore, this substitution has been proposed to convey high agonist affinity to extrasynaptically located receptors.

GlyR α subunits display > 80% overall sequence identity and are thought to contain major determinants of agonist and antagonist binding, because their heterologous expression generates functional glycine-gated channels which display

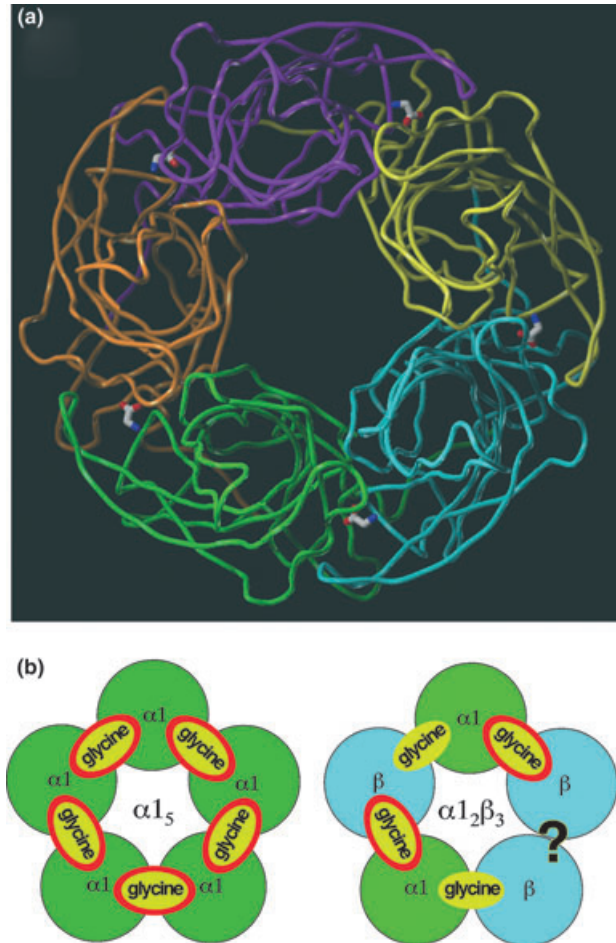


Fig. 1 Model of the N-terminal region of the $\alpha 1$ GlyR and organization of the ligand-binding sites in homomeric and heteromeric GlyRs. (a) View of the ECD of the pentameric $\alpha 1$ GlyR modelled after the structure of the AChBP (Brejc *et al.* 2001; Laube *et al.* 2002). Individual $\alpha 1$ subunit backbones are coloured differently. Glycine indicated by capped sticks is bound at the interface of adjacent subunits (Grudzinska *et al.* 2005). (b) Schematic drawing of the pentameric arrangement of GlyR subunits in homo-oligomeric $\alpha 1$ (left) and hetero-oligomeric $\alpha 1\beta$ (right) GlyRs. Binding sites for glycine are indicated in yellow, and glycine sites also capable of binding strychnine are shown by a red surround. Note the non-equivalence of glycine- and strychnine-binding sites in the hetero-oligomeric receptor. The binding properties of the $\beta\beta$ interface are unknown (indicated by ?).

properties closely resembling those of native GlyRs. So far, only a single GlyR β subunit gene (*Glr2*) has been identified in mammals (reviewed in Laube *et al.* 2002; Lynch 2004). Its translation product, the β subunit, is required for the postsynaptic clustering of GlyRs, owing to a hydrophobic sequence in its M3–M4 loop region that binds to the postsynaptic scaffolding protein gephyrin with high affinity (Meyer *et al.* 1995; Kneussel and Betz 2000). Heterologous expression of the β subunit alone does not result in

glycine-activated currents, implying that α subunits are essential for the assembly of functional GlyRs.

The mechanisms that regulate the transmembrane topology and oligomerization of GlyR proteins are poorly understood. N-glycosylation of the ECDs of the α and β subunits appears to be essential for efficient intracellular trafficking of newly synthesized receptors. In addition, sequence differences between the ECDs of the α and β subunits are important for the stoichiometric assembly of GlyR α and β subunits (Griffon *et al.* 1999). Additional sequence motifs seem to be essential for proper membrane insertion of the individual GlyR polypeptides. Six positively charged residues located in the large cytoplasmic loop following the C-terminal end of M3 are critical for the correct topology of the GlyR α 1 subunit (Sadler *et al.* 2003).

Structure of the GlyR and its ligand-binding sites

Based on significant sequence homology within the group I ligand-gated ion channel family, all members are thought to share a common phylogenetic origin and structural organization (Barnard 1992; Corringer *et al.* 2000). Composite ligand-binding sites, conserved throughout this receptor family, are located at the (+) and (-) interfaces between subunits and involve contact residues that belong to distinct loops of two adjacent subunits (Fig. 1a). Homology modelling of GlyR proteins based on the crystal structure of the soluble acetylcholine-binding protein (AChBP) from the snail *Lymnea stagnalis* (Brookhaven Protein Data Bank entry 1I9B) (Brejc *et al.* 2001) and high-resolution three-dimensional micrographs of the nAChR (Brookhaven Protein Data Bank entry 1OED) (Unwin 2005) have provided intriguing insights into the architecture and ligand-binding pockets of the GlyR (Fig. 1a). Previously, extensive mutational analysis of the recombinant homo-oligomeric α 1 GlyR has allowed identification of several key residues important for agonist and/or antagonist interaction (Laube *et al.* 2002; Lynch 2004). A recent study now also revealed a major role of the β subunit in ligand binding to heteromeric synaptic GlyRs (Grudzinska *et al.* 2005). Here, highly conserved residues of both the α and β subunits are involved in ligand binding. Specifically, homologous arginines located at the (-) inter-

faces of the α and β subunits (α 1^{Arg65}, β 1^{Arg86}) are found to form strong ionic interactions with the α -carboxyl group of glycine, whereas acidic residues at their (+) interfaces (α 1^{Glu157}, β 1^{Glu180}) interact with its α -amino group. Interestingly, similar side-chain interactions have been shown to mediate co-agonist binding in the glycine-binding pocket of the NMDAR (Laube *et al.* 1997; Furukawa and Gouaux 2003), although the subunit structures and ligand-binding sites of ionotropic glutamate receptors are phylogenetically unrelated to those of the group I ligand-gated ion channels. As shown in Fig. 1b, the work of Grudzinska *et al.* (2005) also highlighted differences in the number of agonist- and antagonist-binding sites between homo- and hetero-oligomeric receptors. First, homomeric GlyRs have five identical ligand binding sites for agonists and antagonists at all subunit interfaces (Fig. 1b). In contrast, the interfaces of hetero-oligomeric GlyRs are heterogeneous ($\alpha\beta$, $\beta\alpha$ and $\beta\beta$), and evidence that all interfaces contribute to agonist binding is lacking. Second, although glycine and strychnine share overlapping but non-identical binding determinants, in hetero-oligomeric GlyRs strychnine preferentially interacts with the $\beta\alpha$ interface (Fig. 1b). The pharmacology of the unique $\beta\beta$ interface is presently unknown but might be exploited as a target for synaptic GlyR modulation, in analogy to the benzodiazepine-binding site formed by the single γ subunit of the related GABA_A receptors (Cromer *et al.* 2002).

Mechanisms coupling ligand binding to channel opening

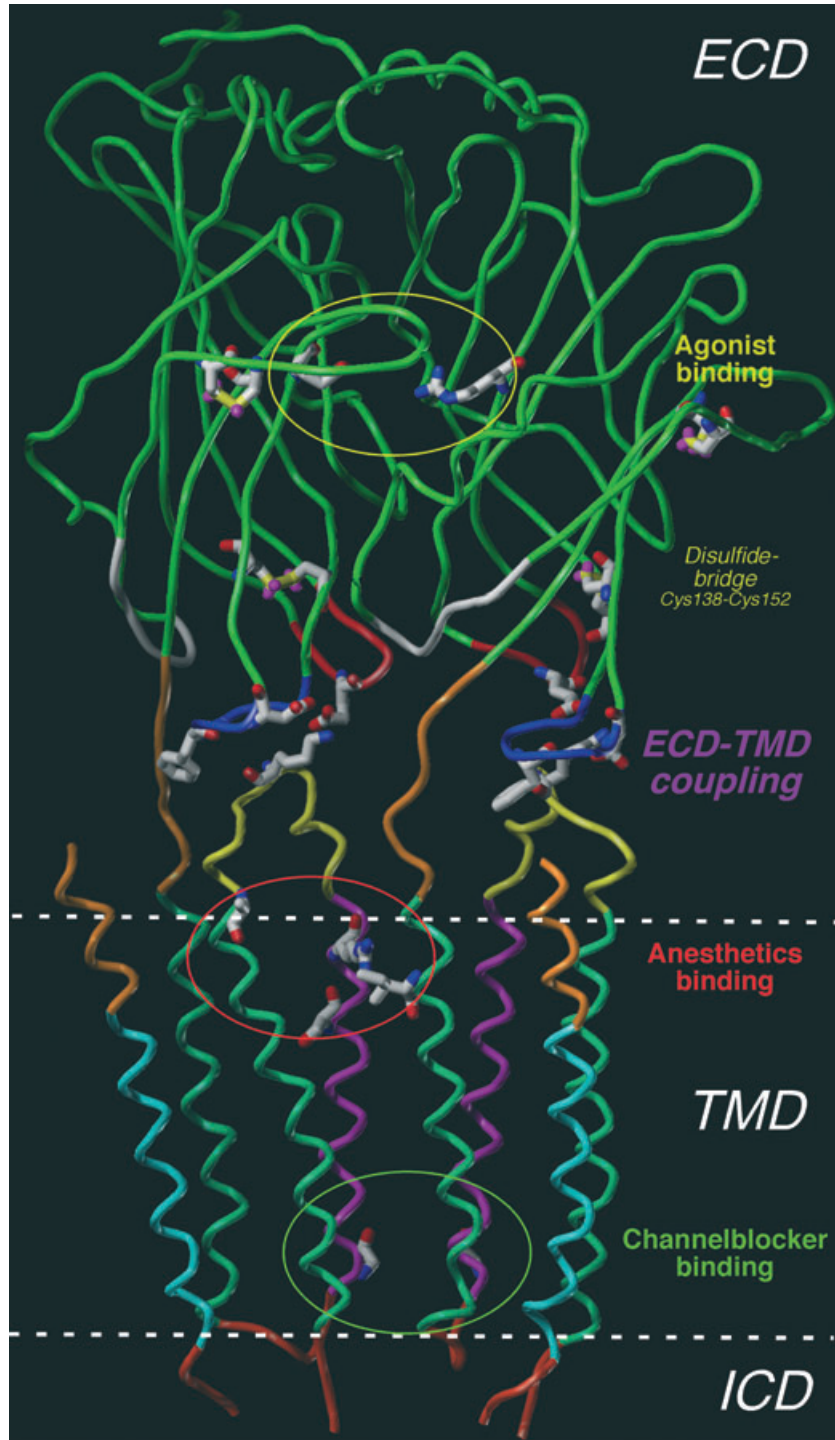
Structural studies of the group I ligand-gated ion channel family indicate that the extracellular agonist-binding site and the channel gate located in transmembrane segment M2 are separated by a distance of approximately 30 Å (Unwin 2005). Therefore local conformational changes induced by ligand binding must be propagated to distant domains of the receptor protein. Although much is known about the structure of the ECDs homologous to AChBP, the conformational transitions coupling neurotransmitter binding to channel gating are not understood. High-resolution electron microscopy by Unwin and collaborators (2003, 2005) suggests that agonist binding to the nAChR induces a clockwise 10° rotation of the inner strands of the extracellular ligand-binding domain and a

Fig. 2 Structural model of the ECDs and TMDs of two adjacent subunits in the α 1 GlyR homo-oligomer. GlyR α 1 subunits were modelled based on the structures of AChBP for the ECD (Brejc *et al.* 2001) and the nAChR for the TMD (Miyazawa *et al.* 2003; Unwin 2005). The polypeptide backbones are displayed as tubes, and regions of the putative gating interface are colour coded as follows: the extracellular loop 2 is highlighted in red, loop 7 in blue and loop 9 in white. The remainder of the ECD is shown in green. The pre-M1 and post-M4 regions are highlighted in orange, the M2–M3 linker region in yellow, and the intracellular domains (ICDs) in orange–red. The pore-forming transmembrane segment M2 is coloured magenta, the TMDs 1 and 3 in blue–green, and M4 in cyan. Residues implicated in the coupling of the ECD with the TMDs (ECD–TMD coupling) are indicated (Glu53,

Phe145, Asp148, Lys276). Dashed lines indicate the approximate borders of the lipid bilayer. The agonist-binding site is labelled by a yellow circle; residues crucial for glycine recognition are indicated (Glu157 at the (+) side, Arg65 at the (-) side). Cysteine residues forming the disulphide-bonded Cys loop (Cys138, Cys152) are indicated; in addition, a disulphide bridge unique to GlyRs (Cys198, Cys209) lies in the immediate vicinity of the agonist-binding pocket. The intramembrane binding site for anaesthetics is indicated by a red circle including residues Ile229, Ser267, Arg271 and Ala288. Channel blockers bind close to the inner mouth of the ion channel (green circle); residue Gly254 in M2 is required for efficient cyanotriphenylborate and ginkgolide B inhibition.

dislocation of its Cys loop. These conformational changes are transduced to the channel-lining M2 helix via an interaction of loop 2 of the ECD by the linker region connecting segments M2 and M3 (Miyazawa *et al.* 2003; Unwin 2005). Mutational data obtained for the $\alpha 1$ GlyR are consistent with a role of charge interactions between the N-terminal ligand-binding domain and the M2–M3 loop in coupling ligand

binding to channel gating, i.e. Asp148 and Lys281 (Absalom *et al.* 2003; Kash *et al.* 2004; Schofield *et al.* 2003, 2004). Furthermore, additional interactions between uncharged residues located in loop 7 and the M2–M3 linker have recently been shown to determine the activation rate of channel opening (Grutter *et al.* 2005). As summarized in a model displaying two adjacent subunits of the GlyR (Fig. 2), loops



2, 7 and 9 of the ECD are orientated towards the four α -helical transmembrane segments M1–M4. Helix M1 and M4 extend out of the membrane toward the ECD, creating regions termed pre-M1 and post-M4 that appear to be capable of interacting with the loops 2, 7 and 9 of the ECD (Fig. 2). In conclusion, the present experimental data suggest that coupling of agonist binding to channel opening in the GlyR is triggered by a conformational change initiated at the agonist-binding site that is transduced to transmembrane segment M2 via interactions between specific residues located at the interface between the ECDs and the loops connecting the transmembrane segments.

Intracellular GlyR domains: roles in receptor modulation and anchoring

Activity-dependent changes in synaptic efficacy are thought to be crucial for higher brain functions. Although different forms of plasticity at glycinergic synapses have been reported, the underlying mechanisms are unclear. For example, increases in postsynaptic Ca^{2+} concentration after high-frequency presynaptic activity are thought to affect the rates of insertion and retrieval of GlyRs into and from the plasma membrane. This allows modulation of the strength of glycinergic inhibition (overview in Legendre 2001). The number of GlyRs at synaptic sites is regulated by factors that control exocytotic receptor insertion into the postsynaptic membrane, anchoring of the receptors at synaptic sites by binding to the scaffolding protein gephyrin, and removal of the GlyR by endocytosis and subsequent proteolysis (overview in Moss and Smart 2001). The kinetics of GlyR trafficking at the level of individual receptor molecules have been studied by single-particle tracking, which allowed single recombinant $\alpha 1$ receptors in the membrane of transfected neurones to be followed (Meier *et al.* 2001). To assess the effect of gephyrin binding on the motility of the GlyR, an 18-amino acid intracellular motif of the GlyR β subunit mediating high-affinity gephyrin binding was inserted into the intracellular loop of the GlyR $\alpha 1$ subunit. Comparison of the motility of $\alpha 1$ WT and $\alpha 1$ engineered GlyRs containing this gephyrin-binding site in neurones revealed that GlyR mobility of the engineered but not the WT GlyRs is slowed at postsynaptic sites. However, heteromeric GlyRs are not irreversibly trapped at synaptic sites but can escape from the subsynaptic gephyrin scaffold, as elegantly demonstrated by labelling endogenous GlyRs in hippocampal neurones with antibodies coupled to quantum dots (Dahan *et al.* 2003). Thus, GlyRs immobilized at synaptic regions of the neuronal plasma membrane are in a highly dynamic equilibrium with a diffusive extrasynaptic state that allows receptor endocytosis and subsequent proteolytic cleavage. The latter processes are triggered upon ubiquitination of lysine residues located within the cytoplasmic loop of the GlyR subunits, as demonstrated for

recombinant $\alpha 1$ GlyRs generated in *Xenopus* oocytes (Büttner *et al.* 2001).

Emerging functions of GlyR subtypes

Developmental and regional expression

The expression of the *Glr1–4* genes is developmentally and regionally regulated. Biochemical and *in situ* hybridization studies have shown that GlyR $\alpha 1$ mRNA and protein are prominently expressed in spinal cord, brainstem and colliculi of adult rodents, whereas $\alpha 2$ transcripts are abundant at birth and found only at low levels in adult hippocampus, cerebral cortex and thalamus (Malosio *et al.* 1991; Sato *et al.* 1992). Moderate levels of $\alpha 3$ transcripts are detected in spinal cord, cerebellum and olfactory bulb (Malosio *et al.* 1991). Presumably because of its low abundance, $\alpha 4$ mRNA has so far escaped localization in the mammalian CNS (Harvey *et al.* 2000). The *GlrB* gene is widely expressed throughout the embryonic and postnatal CNS. The *GlrA* genes show distinct developmental regulation: $\alpha 1$ GlyRs accumulate, and $\alpha 2$ GlyRs decrease after birth. Expression of $\alpha 3$ GlyRs also occurs postnatally, whereas $\alpha 4$, like $\alpha 2$, transcripts appear to be mainly expressed at embryonic stages. The neonatal form of the GlyR is thought to be a homopentamer of $\alpha 2$ subunits (Hoch *et al.* 1989; Takahashi 2005) that are mainly found extrasynaptically *in vivo*, whereas adult synaptic GlyRs are composed of $\alpha 1$ and β subunits (Meyer *et al.* 1995).

Glycine is a major inhibitory neurotransmitter in the adult CNS, whereas it is excitatory during embryonic development and around birth. This is due to a positive chloride equilibrium potential of the postsynaptic neurones, which results in chloride efflux upon GlyR activation, causing depolarization (Reichling *et al.* 1994). This excitatory GlyR function is important for synaptogenesis, because GlyR-triggered rises in intracellular Ca^{2+} have been found to be crucial for the correct formation of postsynaptic glycinergic membrane specializations (Kirsch and Betz 1998). At early postnatal stages, the chloride equilibrium potential shifts to negative values owing to active chloride extrusion by the K^+/Cl^- co-transporter KCC2. Thus, GlyR activation becomes hyperpolarizing, and therefore inhibitory (Rivera *et al.* 1999). This developmental switch from excitatory to inhibitory glycine action is paralleled by changes in the biophysical characteristics of the postsynaptic glycine response, such as a faster rising phase and faster decay kinetics. These changes arise from a concomitant switch in GlyR subunit composition. Recombinant homo-oligomeric $\alpha 2$ GlyRs show slower response kinetics and larger subconductance state distributions than $\alpha 1\beta$ heteromeric receptors, consistent with the *in vivo* properties of neonatal compared with adult GlyRs (overview in Takahashi 2005). The transition from (extrasynaptic) neonatal homo-oligomeric $\alpha 2$ GlyRs to (synaptic)

adult hetero-oligomeric $\alpha\beta$ receptors thus correlates with the shortening of the mean open time of adult GlyR channels and the faster decay times of inhibitory glycinergic postsynaptic currents seen at early postnatal stages.

Early developmental roles

In addition to glycine, the endogenous amino acid taurine displays inhibitory activity when applied to neurones. Taurine is released non-synaptically from immature cortical neurones, and has been found to influence cortical development by activating extrasynaptic GlyRs (Flint *et al.* 1998). Recently, Young and Cepko (2004) reported that taurine regulates the number of rod photoreceptors in the developing retina by activating $\alpha 2$ subunit-containing GlyRs expressed by retinal progenitor cells. These data implicate extrasynaptic GlyRs in the regulation of neuronal development. Although neurotransmission between nerve cells occurs predominantly at synapses, extrasynaptic receptors are thought to mediate non-focal tonic transmission caused by non-vesicular release and/or transmitter spillover from adjacent synapses. Consistent with this, some persistent expression of the $\alpha 2$ subunit in the adult auditory brainstem, hippocampus and retina (Danglot *et al.* 2004; Haverkamp *et al.* 2004) may be required for tonic taurine inhibition mediated by extrasynaptically localized $\alpha 2$ GlyRs. In conclusion, GlyRs may produce both 'phasic' inhibition, triggered by high concentrations of glycine released from synaptic sites that activate synaptic GlyRs, and 'tonic' inhibition, as a result of persistent activation of extrasynaptic GlyRs by comparatively low concentrations of glycine or taurine in the extrasynaptic space.

GlyR diversity in a model circuitry: the mammalian retina

Although heterologous expression of different GlyR subunits revealed only comparatively subtle pharmacological differences between the receptor isoforms, evidence for differential roles of specific GlyRs in neuronal circuits has recently emerged from studies on the retina. Glycinergic transmission has a pronounced role in retinal processing of light signals (overview in Wässle 2004). *In situ* hybridization and single-cell polymerase chain reaction analyses showed that GlyR α subunit mRNAs are differentially distributed in the mammalian retina: $\alpha 1$ transcripts are predominantly localized in bipolar cells and some ganglion cells, $\alpha 2$ mRNA in amacrine cells of the inner nuclear layer (INL) and in the ganglion cell layer (GCL) and $\alpha 3$ transcripts in the entire INL and, to a lesser extent, in the GCL. As in the CNS, the β mRNA shows a widespread distribution. More recently, the localization of GlyR α subunit proteins in the retina has been investigated immunocytochemically using specific antibodies (Haverkamp *et al.* 2004; Jusuf *et al.* 2005). All antibodies produced a punctate immunofluorescence, corresponding to GlyRs clustered at synaptic sites in bipolar, amacrine and ganglion cells. Although different GlyR α subunits may exist

throughout the synaptic layers of the retina, these immunocytochemical studies revealed that < 10% of the glycinergic synapses show a co-localization of different α subunits within the same synapse (Fig. 3a). Hence, most retinal glycinergic synapses contain only one type of GlyR channel (Haverkamp *et al.* 2003, 2004), consistent with a selective targeting of different α subunit isoforms to distinct synaptic sites. A recent publication (Ivanova *et al.* 2006) indeed indicates that different GlyR subtypes are linked to distinct neuronal circuits and consequently serve distinct functions in the retina. These authors demonstrated that the $\alpha 1$ subunit is present in all synaptic GlyRs in bipolar cells. In contrast, amacrine cells express mainly $\alpha 2$ subunits, whereas ganglion cells express both fast ($\alpha 1$ and $\alpha 3$) and slow ($\alpha 2$) subunits at different loci, indicating that differential expression and processing of the α subunits to discrete synaptic regions is crucial for proper functioning of the retinal network.

$\alpha 3$ GlyRs: molecular substrates of inflammatory pain sensitization

Physiological symptoms of strychnine poisoning include disinhibition of motor neurones and sensory afferents as well as enhanced pain perception. In the dorsal horn of the spinal cord, nociceptive afferents coming from the periphery make synaptic connections with neurones located in the superficial laminae I and II, the first site of synaptic integration in the pain pathway. Here, a local network of glycinergic inhibitory interneurones regulates propagation of nociceptive signals to higher brain regions. Hence, relief from glycinergic inhibition can elicit and exaggerate nociceptive responses. Therefore, compounds that enhance glycine responses should have therapeutic promise for peripheral analgesia. So far, however, this concept has received little attention because of an apparent lack of GlyR isoform specificity in spinal cord. Recently, the central component of sensitization to inflammatory pain has been shown to originate from disinhibition of dorsal horn neurones, which are relieved from glycinergic inhibition by the inflammatory mediator prostaglandin E₂ (PGE₂) (Ahmadi *et al.* 2002). PGE₂ activates prostaglandin E receptors of the EP2 subtype and leads to a protein kinase A-dependent phosphorylation and inhibition of synaptic GlyRs containing the $\alpha 3$ subunit (Harvey *et al.* 2004). Originally, the $\alpha 3$ subunit was considered a minor GlyR protein with an expression pattern similar to that of the $\alpha 1$ subunit. However, immunocytochemistry with specific antibodies revealed that in spinal cord $\alpha 3$ GlyRs are distinctly expressed in the superficial layers of the dorsal horn, where nociceptive afferents terminate (Fig. 3b). Again, GlyR $\alpha 3$ immunoreactivity showed little overlap with GlyR $\alpha 1$, indicating that the two adult GlyR α subunit isoforms are targeted to distinct synaptic sites, as found in retina (Fig. 3c). Notably, inactivation of the murine *Gla3* gene abolished both the inhibition of glycine currents in dorsal horn neurones seen upon PGE₂ application in spinal cord slice preparations as well as PGE₂-mediated pain

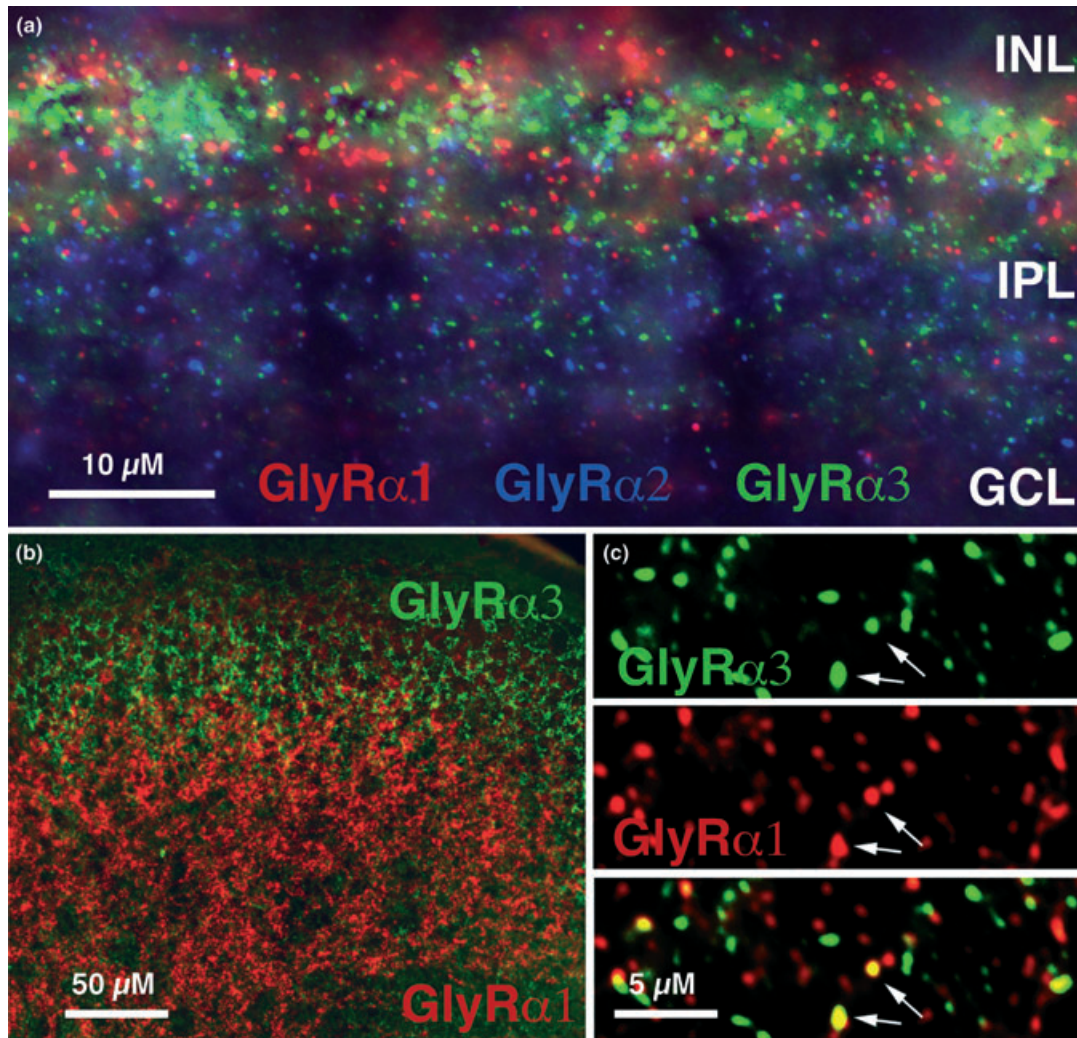


Fig. 3 Differential expression of GlyR α subunits in mouse retina and spinal cord. (a) Confocal fluorescence photomicrograph showing punctate GlyR $\alpha 1$, $\alpha 2$ and $\alpha 3$ distributions in the inner plexiform layer (IPL) of the mouse retina. Retinal layers are indicated. Note segregation of the different fluorescence signals to distinct sublayers of the IPL. (b) Fluorescence micrograph taken from a single section through the dorsal horn of the thoracic spinal cord double-immunostained for

GlyR $\alpha 3$ and GlyR $\alpha 1$. Punctate labelling shows that the GlyR $\alpha 3$ subunit (green) is restricted to laminae I and II of the dorsal horn, whereas the $\alpha 1$ subunit (red) is expressed throughout the grey matter. (c) High-resolution images and superposition show that only a few synaptic GlyR $\alpha 3$ clusters co-localize with GlyR $\alpha 1$ subunit puncta (indicated by yellow colour and arrows). Courtesy of Liane Heinze and Heinz Wässle.

sensitization in the intact animal (Harvey *et al.* 2004). Therefore, therapies aimed at specifically potentiating $\alpha 3$ GlyR currents, for example by enhancing the post-translational RNA editing process leading to high-affinity $\alpha 3$ -containing GlyRs (Meier *et al.* 2005) or by administering $\alpha 3$ -specific drugs, may prove effective in providing analgesia.

GlyR pharmacology: unravelling antagonist and modulator actions

Although the different GlyR α subunits exhibit differential synaptic distribution patterns and functions, particularly evident in the retina and the superficial dorsal horn of the

spinal cord, the physiological consequences of different GlyR isoform distribution patterns are difficult to establish pharmacologically because of a lack of specific antagonists. The neurosteroid pregnenolone sulphate, although not specific for the GlyR, is more potent on $\alpha 1$ than $\alpha 2$ receptors and can be used to distinguish between these isoforms. Tropicam and colchicines are more potent blockers at $\alpha 2$ than $\alpha 1$ receptors. The organic anion cyanotriphenylborate acts in a use-dependent manner, with better affinities for $\alpha 1$ than $\alpha 2$ GlyRs. However, although these differences may be helpful in discriminating receptors containing different α subunits, they are far from being subtype-selective probes (see overview in Laube *et al.* 2002). Picrotoxin, which is widely

used as a non-competitive GABA_A receptor antagonist, also inhibits GlyR currents. Both the glycine responses of neurones and of recombinantly expressed hetero-oligomeric $\alpha\beta$ GlyR are relatively resistant to picrotoxin, whereas homo-oligomeric α -containing GlyRs are sensitive to low micromolar concentrations of this alkaloid. Although picrotoxin distinguishes between homomeric and heteromeric GlyRs, its lack of specificity for GlyRs restricts its usefulness in detecting the presence of heteromeric GlyRs. Recently, ginkgolide B, a component of the extract from leaves of the *Ginkgo biloba* tree, has been shown specifically to inhibit glycine-induced currents of hetero-oligomeric GlyRs in a non-competitive fashion with IC₅₀ values in the nanomolar range, with an up to 20-fold higher affinity for hetero-oligomeric than homo-oligomeric GlyRs (Kondratskaya *et al.* 2005). Both picrotoxin and ginkgolide B bind to the channel region of the GlyR, as deduced from the analysis of substitutions within transmembrane segment M2. Because ginkgolide B is inactive at GABA_A receptors, it may become a useful tool with which to (i) discriminate homo- from hetero-oligomeric GlyRs, (ii) separate extrasynaptic from synaptic glycine currents, and (iii) block selectively the GlyR but not the GABA_A receptor chloride channel. The latter property is of particular interest, because GlyRs and GABA_A receptors are often co-localized at the same postsynaptic sites in spinal cord and brainstem (Bohlhalter *et al.* 1994). It has been demonstrated that miniature inhibitory postsynaptic currents (mIPSCs) resulting from the simultaneous co-activation of both types of receptor decay with a 'mixed' time course; this raises new opportunities for affecting inhibitory synaptic integration by specific modulators (overview in Laube *et al.* 2002). In addition, the relative strength of glycinergic and GABAergic synapses is known to change during postnatal development, such that GABA_A receptor-mediated inhibition is prevalent embryonically and GlyR-mediated transmission is dominant postnatally.

Cannabinoids – new modulatory compounds acting at the GlyR

It has been proposed recently that significant sequence similarities exist between partial GlyR subunit sequences and putative ligand-binding regions of cannabinoid receptors (Lozovaya *et al.* 2005). Indeed, the cannabinoids anandamide and 2-arachidonoylglycerol inhibit glycine currents elicited in isolated hippocampal neurones at high glycine concentrations (100 μ M; Lozovaya *et al.* 2005). Interestingly, at low glycine concentrations (3 μ M), nanomolar concentrations of anandamide and 2-arachidonoylglycerol were found to potentiate glycine-mediated currents of both recombinant and native GlyRs (Hejazi *et al.* 2006). Furthermore, the main psychoactive constituent of *Cannabis sativa*, Δ 9-tetrahydrocannabinol, has recently been reported to mimic the activity of endogenous cannabinoids at the GlyR (Hejazi *et al.* 2006), supporting the idea of a dual regulation of these receptors by

cannabinoid compounds. Δ 9-tetrahydrocannabinol and synthetic cannabinoid receptor agonists have analgesic activity in acute pain models, suggesting that cannabinoids may modulate GlyRs within pain pathways.

Positive modulators acting via the transmembrane domains (TMDs)

Potential of GlyR function in the CNS is a considerable therapeutic target (overview in Laube *et al.* 2002). Anaesthetic concentrations of propofol, an intravenous anaesthetic, volatile halogenated hydrocarbons, such as halothane, enflurane, isoflurane, methoxyflurane and sevoflurane, and ethanol enhance GlyR currents elicited by low concentrations of agonist. Although the mechanism of action of these drugs is still unclear, different lines of evidence suggest that the TMDs of the GlyR are involved in its modulation by anaesthetics (overview in Lynch 2004). Homology modelling suggests the existence of a water-filled cavity between transmembrane segments M2 and M3 that acts as an anaesthetic-binding site (Bertaccini *et al.* 2005). Using site-directed mutagenesis, residues within segments M2 and M3 of the α 1 subunit (Ser267 and Arg271 in M2, and Ala288 near the extracellular end of M3; Fig. 2), have been shown to be important for the potentiating effect of both volatile and intravenous anaesthetics and alcohol. A defined anaesthetic-binding site capable of modulating receptor function thus appears to exist with the membrane-embedded region of the GlyR.

Modulation of GlyR function *in vivo*

Recent progress in understanding the physiological roles of distinct GlyR subtypes has fostered efforts to terminate the 'therapeutic orphan status' of the GlyR (Laube *et al.* 2002). Transgenic mice carrying the hyperekplexia mutation Arg271Gln show spontaneous or handling-induced tremor and an exaggerated startle response (Becker *et al.* 2002), which can both be alleviated by treatment with subanaesthetic doses of the positive modulator propofol (O'Shea *et al.* 2004). Indeed, the agonist response of recombinant GlyRs harbouring the hyperekplexia 271 mutation is strongly potentiated by subanaesthetic concentrations of propofol (O'Shea *et al.* 2004), showing that propofol has the potency to rescue patients with hyperekplexia from acute syndromes. The potential of drugs enhancing GlyR responses is further emphasized by studies with the divalent cation Zn²⁺. Zn²⁺ is a physiological allosteric modulator of ionotropic receptors (Smart *et al.* 2004) that exhibits biphasic effects on both native and recombinantly expressed GlyRs (Laube *et al.* 1995). Low concentrations of Zn²⁺ (1–10 μ M) potentiate submaximal glycine-induced currents, whereas higher concentrations cause competitive inhibition. These differential effects have been attributed to distinct Zn²⁺-binding sites in the ECD of GlyR α subunits (Lynch *et al.* 1998; Harvey

et al. 1999; Laube *et al.* 2000; Nevin *et al.* 2003; Miller *et al.* 2005). Because Zn^{2+} is present within different subpopulations of synaptic vesicles and co-released with neurotransmitters upon stimulation, Zn^{2+} modulation is thought to be of physiological significance (overview in Smart *et al.* 2004). Indeed, GlyR-mediated mIPSCs have been shown to be affected by Zn^{2+} , indicating that Zn^{2+} regulation is effective at synaptic sites (Laube 2002). However, whether Zn^{2+} modulation is important for neurotransmission *in vivo* has remained elusive. A recent study provides the first *in vivo* evidence for Zn^{2+} modulation of a ligand-gated ion channel in the intact mammalian CNS (Hirzel K., Muller U., Betz H. and Laube B., unpublished observation). By using gene targeting, a point mutation (Asp80Ala) was introduced into the murine *Glr1* locus, which selectively suppresses Zn^{2+} potentiation. Knock-in mice homozygous for *Glr1* (D80A) show a phenotype that mimics that of patients with hyperekplexia (hereditary startle disease) and of *spasmodic* or *spastic* GlyR mutant mice, and thus is indicative of decreased glycinergic inhibition. These findings point to an essential role of Zn^{2+} in regulating glycinergic transmission in the mammalian CNS and highlight the therapeutic potential of GlyR subunit-specific modulators.

It is noteworthy that GlyRs are the only members of the group I ligand-gated ion channel family that do not have a counterpart in the metabotropic receptor families. Thus, glycinergic neurotransmission apparently involves only ionotropic receptors. Curiously, however, given the lack of any direct link to G protein-coupled signalling pathways, GlyRs can be modulated by G protein $\beta\gamma$ subunits, which increase the apparent affinity for glycine and the duration of glycinergic synaptic currents via a direct interaction with the GlyR $\alpha 1$ subunit (Yevenes *et al.* 2003). This mechanism may also be exploited in further attempts to potentiate GlyR currents.

Role of GlyRs in pathology

As outlined above, sublethal strychnine poisoning leads to motor disturbances, increased muscle tone, and hyperacuity of sensory, visual and acoustic perceptions. Similarly, mutations in the human *Glr1* and *Glr2* genes cause an impairment of glycinergic transmission, which results in hyperekplexia, a hereditary neuromotor disorder (Schofield 2002). Hyperekplexia is characterized by an exaggerated startle reaction in response to unexpected auditory or visual stimuli, often followed by a short period of generalized stiffness. Consciousness, however, remains intact. Genetic studies have identified different mutations in the *Glr1* gene of patients with hyperekplexia. Substitutions of the highly conserved charged residue Arg271 by uncharged amino acids (leucine or glutamine) underlie autosomal dominant hyperekplexia and result in reduced glycine affinities and chloride conductances of the respective recombinant receptors (Lang-

osch *et al.* 1994). Additional autosomal recessive inheritance patterns or compound heterozygosity have also been described for other hyperekplexia mutations in *Glr1* (Gilbert *et al.* 2004; Tsai *et al.* 2004; overview in Breiting and Becker 2002; Lynch 2004). Consistent with an important role of the β subunit in postsynaptic GlyR function, a hyperekplexic mutation in the *Glr2* gene has also been identified, which significantly reduces the apparent glycine affinity of the GlyR (Rees *et al.* 2002). In keeping with the distinct functions of GlyR $\alpha 2$ and $\alpha 3$ subunits, no pathogenetic mutations have been detected in the corresponding *Glr3* genes. Besides the well documented roles of GlyRs in motor control and sensory processing that are impaired in hyperekplexia, recent studies implicate GlyRs in pain perception (Ahmadi *et al.* 2002), the pathology of autism (Ramanathan *et al.* 2004), human immunodeficiency virus-associated dementia (Gelman *et al.* 2004) and generalized epilepsy (Sobetzko *et al.* 2001). Together, these results indicate a significant clinical need for novel ligands that display high selectivity for and potency at GlyRs. Two recently developed fluorescence-based assays, which allow efficient monitoring of GlyR-mediated anion influx into cultured cells, offer considerable promise for high-throughput screening (Jensen and Kristiansen 2004; Kruger *et al.* 2005).

Conclusion and perspectives

Remarkable progress has been made over recent years in understanding of the structural organization and functional properties of different types of GlyRs. Although GlyRs do not display the high molecular diversity characteristic of ionotropic GABA_A or glutamate receptors, the cell type-specific expression and differential assembly of the different GlyR subunits into distinct receptor isoforms allows for considerable specialization of glycinergic synapses. Based on the advances made in understanding of the structural basis of ligand binding in particular to synaptically localized hetero-oligomeric GlyRs, subtype-selective compounds are expected to emerge that will allow dissection of specific GlyR isoform functions in various regions of the mammalian CNS.

Acknowledgements

Work in our laboratory is supported by Max Planck Gesellschaft, Deutsche Forschungsgemeinschaft, Thyssen Stiftung and Fonds der Chemischen Industrie. We thank G.A. Herin for critical reading of the manuscript.

References

- Absalom N. L., Lewis T. M., Kaplan W., Pierce K. D. and Schofield P. R. (2003) Role of charged residues in coupling ligand binding and channel activation in the extracellular domain of the glycine receptor. *J. Biol. Chem.* **278**, 50 151–157.

- Ahmadi S., Lippross S., Neuhuber W. L. and Zeilhofer H. U. (2002) PGE₂ selectively blocks inhibitory glycinergic neurotransmission onto rat superficial dorsal horn neurons. *Nat. Neurosci.* **5**, 34–40.
- Barnard E. A. (1992) Receptor classes and the transmitter-gated ion channels. *Trends Biochem. Sci.* **17**, 368–374.
- Becker L., von Wegerer J., Schenkel L., Zeilhofer H. U., Swandulla D. and Weiher H. (2002) Disease-specific human glycine receptor alpha1 subunit causes hyperekplexia phenotype and impaired glycine- and GABA(A)-receptor transmission in transgenic mice. *J. Neurosci.* **22**, 2505–2512.
- Bertaccini E. J., Shapiro J., Brutlag D. L. and Trudell J. R. (2005) Homology modeling of a human glycine alpha 1 receptor reveals a plausible anesthetic binding site. *J. Chem. Inf. Model.* **45**, 128–135.
- Bohlhalter S., Mohler H. and Fritschy J. M. (1994) Inhibitory neurotransmission in rat spinal cord: co-localization of glycine- and GABA_A-receptors at GABAergic synaptic contacts demonstrated by triple immunofluorescence staining. *Brain Res.* **642**, 59–69.
- Breitinger H. G. and Becker C. M. (2002) The inhibitory glycine receptor – simple views of a complicated channel. *Chembiochem* **3**, 1042–1052.
- Brejč K., van Dijk W. J., Klaassen R. V., Schuurmans M., Van Der Oost J., Smit A. B. and Sixma T. K. (2001) Crystal structure of an ACh-binding protein reveals the ligand-binding domain of nicotinic receptors. *Nature* **411**, 269–276.
- Büttner C., Sadtler S., Leyendecker A., Laube B., Griffon N., Betz H. and Schmalzing G. (2001) Ubiquitination precedes internalization and proteolytic cleavage of plasma membrane-bound glycine receptors. *J. Biol. Chem.* **276**, 42 978–42 985.
- Corringer P. J., Le Novere N. and Changeux J. P. (2000) Nicotinic receptors at the amino acid level. *Annu. Rev. Pharmacol. Toxicol.* **40**, 431–458.
- Cromer B. A., Morton C. J. and Parker M. W. (2002) Anxiety over GABA(A) receptor structure relieved by AChBP. *Trends Biochem. Sci.* **27**, 280–287.
- Dahan M., Levi S., Luccardini C., Rostaing P., Riveau B. and Triller A. (2003) Diffusion dynamics of glycine receptors revealed by single-quantum dot tracking. *Science* **302**, 442–445.
- Danglot L., Rostaing P., Triller A. and Bessis A. (2004) Morphologically identified glycinergic synapses in the hippocampus. *Mol. Cell. Neurosci.* **27**, 394–403.
- Eulenburg V., Armsen W., Betz H. and Gomeza J. (2005) Glycine transporters: essential regulators of neurotransmission. *Trends Biochem. Sci.* **30**, 325–333.
- Flint A. C., Liu X. and Kriegstein A. R. (1998) Nonsynaptic glycine receptor activation during early neocortical development. *Neuron* **20**, 43–53.
- Furukawa H. and Gouaux E. (2003) Mechanisms of activation, inhibition and specificity: crystal structures of the NMDA receptor NR1 ligand-binding core. *EMBO J.* **22**, 2873–2885.
- Gelman B. B., Soukup V. M., Schuenke K. W., Keherly M. J., Holzer C., Richey F. J. and Lahart C. J. (2004) Acquired neuronal channelopathies in HIV-associated dementia. *J. Neuroimmunol.* **157**, 111–119.
- Gilbert S. L., Ozdag F., Ulas U. H., Dobyns W. B. and Lahn B. T. (2004) Hereditary hyperekplexia caused by novel mutations of GLRA1 in Turkish families. *Mol. Diagn.* **8**, 151–155.
- Griffon N., Büttner C., Nicke A., Kuhse J., Schmalzing G. and Betz H. (1999) Molecular determinants of glycine receptor subunit assembly. *EMBO J.* **18**, 4711–4721.
- Grudzinska J., Schemm R., Haeger S., Nicke A., Schmalzing G., Betz H. and Laube B. (2005) The beta subunit determines the ligand binding properties of synaptic glycine receptors. *Neuron* **45**, 727–739.
- Grutter T., de Carvalho L. P., Dufresne V., Taly A., Edelstein S. J. and Changeux J. P. (2005) Molecular tuning of fast gating in pentameric ligand-gated ion channels. *Proc. Natl Acad. Sci. USA* **102**, 18 207–18 212.
- Harvey R. J., Thomas P., James C. H., Wilderspin A. and Smart T. G. (1999) Identification of an inhibitory Zn²⁺ binding site on the human glycine receptor alpha1 subunit. *J. Physiol.* **520**, 53–64.
- Harvey R. J., Schmieden V., Von Holst A., Laube B., Rohrer H. and Betz H. (2000) Glycine receptors containing the alpha4 subunit in the embryonic sympathetic nervous system, spinal cord and male genital ridge. *Eur. J. Neurosci.* **12**, 994–1001.
- Harvey R. J., Depner U. B., Wässle H. et al. (2004) GlyR alpha3: an essential target for spinal PGE₂-mediated inflammatory pain sensitization. *Science* **304**, 884–887.
- Haverkamp S., Harvey K., Harvey R. J., Betz H. and Wässle H. (2003) Diversity of glycine receptors in the mouse retina: localization of the alpha3 subunit. *J. Comp. Neurol.* **465**, 524–539.
- Haverkamp S., Müller U., Zeilhofer H. U., Harvey R. J. and Wässle H. (2004) Diversity of glycine receptors in the mouse retina: localization of the alpha2 subunit. *J. Comp. Neurol.* **477**, 399–411.
- Hejazi N., Zhou C., Oz M., Sun H., YeJ. and Zhang L. (2006) Δ9-Tetrahydrocannabinol and endogenous cannabinoid anandamide directly potentiate the function of glycine receptors. *Mol. Pharmacol.* **69**, 991–997.
- Hoch W., Betz H. and Becker C. M. (1989) Primary cultures of mouse spinal cord express the neonatal isoform of the inhibitory glycine receptor. *Neuron* **3**, 339–348.
- Ivanova E., Müller U. and Wässle H. (2006) Characterization of the glycinergic input to bipolar cells of the mouse retina. *Eur. J. Neurosci.* **23**, 350–364.
- Jensen A. A. and Kristiansen U. (2004) Functional characterisation of human glycine receptors in a fluorescence-based high throughput screening assay. *Eur. J. Pharmacol.* **521**, 39–42.
- Jusuf P. R., Haverkamp S. and Grünert U. (2005) Localization of glycine receptor alpha subunits on bipolar and amacrine cells in primate retina. *J. Comp. Neurol.* **488**, 113–128.
- Kash T. L., Kim T., Trudell J. R. and Harrison N. L. (2004) Evaluation of a proposed mechanism of ligand-gated ion channel activation in the GABA_A and glycine receptors. *Neurosci. Lett.* **371**, 230–234.
- Kirsch J. and Betz H. (1998) Glycine-receptor activation is required for receptor clustering in spinal neurons. *Nature* **392**, 717–720.
- Kneussel M. and Betz H. (2000) Clustering of inhibitory neurotransmitter receptors at developing postsynaptic sites: the membrane activation model. *Trends Neurosci.* **23**, 429–435.
- Kondratskaya E. L., Betz H., Krishtal O. A. and Laube B. (2005) The beta subunit increases the ginkgolide B sensitivity of inhibitory glycine receptors. *Neuropharmacology* **49**, 945–951.
- Kruger W., Gilbert D., Hawthorne R., Hryciw D. H., Frings S., Poronnik P. and Lynch J. W. (2005) A yellow fluorescent protein-based assay for high-throughput screening of glycine and GABA_A receptor chloride channels. *Neurosci. Lett.* **380**, 340–345.
- Kuhse J., Betz H. and Kirsch J. (1995) The inhibitory glycine receptor: architecture, synaptic localization and molecular pathology of a postsynaptic ion-channel complex. *Curr. Opin. Neurobiol.* **5**, 318–323.
- Langosch D., Laube B., Rundstrom N., Schmieden V., Bormann J. and Betz H. (1994) Decreased agonist affinity and chloride conductance of mutant glycine receptors associated with human hereditary hyperekplexia. *EMBO J.* **13**, 4223–4238.
- Laube B. (2002) Potentiation of inhibitory glycinergic neurotransmission by Zn²⁺: a synergistic interplay between presynaptic P2X₂ and postsynaptic glycine receptors. *Eur. J. Neurosci.* **16**, 1025–1036.
- Laube B., Kuhse J., Rundstrom N., Kirsch J., Schmieden V. and Betz H. (1995) Modulation by zinc ions of native rat and recombinant human inhibitory glycine receptors. *J. Physiol.* **483**, 613–619.

- Laube B., Hirai H., Sturgess M., Betz H. and Kuhse L. (1997) Molecular determinants of agonist discrimination by NMDA receptor subunits: analysis of the glutamate binding site on the NR2B subunit. *Neuron* **18**, 493–503.
- Laube B., Kuhse J. and Betz H. (2000) Kinetic and mutational analysis of Zn^{2+} modulation of recombinant human inhibitory glycine receptors. *J. Physiol.* **522**, 215–230.
- Laube B., Maksay G., Schemm R. and Betz H. (2002) Modulation of glycine receptor function: a novel approach for therapeutic intervention at inhibitory synapses? *Trends Pharmacol. Sci.* **23**, 519–527.
- Legendre P. (2001) The glycinergic inhibitory synapse. *Cell. Mol. Life Sci.* **58**, 760–793.
- Lozovaya N., Yatsenko N., Beketov A., Tsintsadze T. and Burnashev N. (2005) Glycine receptors in CNS neurons as a target for nonretrograde action of cannabinoids. *J. Neurosci.* **25**, 7499–7506.
- Lynch J. W. (2004) Molecular structure and function of the glycine receptor chloride channel. *Physiol. Rev.* **84**, 1051–1095.
- Lynch J. W., Jacques P., Pierce K. D. and Schofield P. R. (1998) Zinc potentiation of the glycine receptor chloride channel is mediated by allosteric pathways. *J. Neurochem.* **71**, 2159–2168.
- Malosio M. L., Marqueze-Pouey B., Kuhse J. and Betz H. (1991) Widespread expression of glycine receptor subunit mRNAs in the adult and developing rat brain. *EMBO J.* **10**, 2401–2409.
- Matzenbach B., Maulet Y., Sefton L., Avner P., Guenet J. L. and Betz H. (1994) Structural analysis of mouse glycine receptor alpha subunit genes. Identification and chromosomal localization of a novel variant. *J. Biol. Chem.* **269**, 2607–2612.
- Meier J., Vannier C., Serge A., Triller A. and Choquet D. (2001) Fast and reversible trapping of surface glycine receptors by gephyrin. *Nat. Neurosci.* **4**, 253–260.
- Meier J., Henneberger C., Melnick I., Racca C., Harvey R. J., Heinemann U., Schmieden V. and Grantyn R. (2005) RNA editing produces glycine receptor alpha3 (P185L), resulting in high agonist potency. *Nat. Neurosci.* **8**, 736–744.
- Meyer G., Kirsch J., Betz H. and Langosch D. (1995) Identification of a gephyrin binding motif on the glycine receptor beta subunit. *Neuron* **15**, 563–572.
- Miller P. S., Da Silva H. M. and Smart T. G. (2005) Molecular basis for zinc potentiation at strychnine-sensitive glycine receptors. *J. Biol. Chem.* **280**, 37 877–37 884.
- Miyazawa A., Fujiyoshi J. and Unwin N. (2003) Structure and gating mechanism of the acetylcholine receptor pore. *Nature* **423**, 949–955.
- Moss S. J. and Smart T. G. (2001) Constructing inhibitory synapses. *Nat. Rev. Neurosci.* **2**, 240–250.
- Nevin S. T., Cromer B. A., Haddrill J. L., Morton C. J., Parker M. W. and Lynch J. W. (2003) Insights into the structural basis for zinc inhibition of the glycine receptor. *J. Biol. Chem.* **278**, 28 985–28 992.
- O'Shea S. M., Becker L., Weiher H., Betz H. and Laube B. (2004) Propofol restores the function of 'hyperekplexic' mutant glycine receptors in *Xenopus* oocytes and mice. *J. Neurosci.* **24**, 2322–2327.
- Ramanathan S., Woodroffe A. and Flodman P. L. (2004) A case of autism with an interstitial deletion on 4q leading to hemizygosity for genes encoding for glutamine and glycine neurotransmitter receptor subunits (AMPA 2, GLRA3, GLRB) and neuropeptide receptors NPY1R, NPY5R. *BMC Med. Genet.* **5**, 10.
- Rees M. I., Lewis T. M., Kwok J. B., Mortier G. R., Govaert P., Snell R. G., Schofield P. R. and Owen M. J. (2002) Hyperekplexia associated with compound heterozygote mutations in the beta-subunit of the human inhibitory glycine receptor (GLRB). *Hum. Mol. Genet.* **11**, 853–860.
- Reichling D. B., Kyzozis A., Wang J. and MacDermott A. B. (1994) Mechanisms of GABA and glycine depolarization-induced calcium transients in rat dorsal horn neurons. *J. Physiol.* **476**, 411–421.
- Rivera C., Voipio J., Payne J. A., Ruusuvuori E., Lahtinen H., Lamsa K., Pirvola U., Saarna M. and Kaila K. (1999) The K^+/Cl^- co-transporter KCC2 renders GABA hyperpolarizing during neuronal maturation. *Nature* **397**, 251–255.
- Sadtler S., Laube B., Lashub A., Nicke A., Betz H. and Schmalzing G. (2003) A basic cluster determines topology of the cytoplasmic M3–M4 loop of the glycine receptor alpha1 subunit. *J. Biol. Chem.* **278**, 16 782–16 790.
- Sato K., Kiyama H. and Tohyama M. (1992) Regional distribution of cells expressing glycine receptor alpha 2 subunit mRNA in the rat brain. *Brain Res.* **590**, 95–108.
- Schofield C. M., Jenkins A. and Harrison N. L. (2003) A highly conserved aspartic acid residue in the signature disulfide loop of the alpha 1 subunit is a determinant of gating in the glycine receptor. *J. Biol. Chem.* **278**, 34 079–34 083.
- Schofield C. M., Trudell J. R. and Harrison N. L. (2004) Alanine-scanning mutagenesis in the signature disulfide loop of the glycine receptor alpha 1 subunit: critical residues for activation and modulation. *Biochemistry* **43**, 10 058–10 063.
- Schofield P. R. (2002) The role of glycine and glycine receptors in myoclonus and startle syndromes. *Adv. Neurol.* **89**, 263–274.
- Smart T. G., Hosie A. M. and Miller P. S. (2004) Zn^{2+} ions: modulators of excitatory and inhibitory synaptic activity. *Neuroscientist* **10**, 432–442.
- Sobetzko D., Sander T. and Becker C. M. (2001) Genetic variation of the human glycine receptor subunit genes GLRA3 and GLRB and susceptibility to idiopathic generalized epilepsies. *Am. J. Med. Genet.* **105**, 534–538.
- Takahashi T. (2005) Postsynaptic receptor mechanisms underlying developmental speeding of synaptic transmission. *Neurosci. Res.* **53**, 229–240.
- Tsai C. H., Chang F. C., Su Y. C., Tsai F. J., Lu M. K., Lee C. C., Kuo C. C., Yang Y. W. and Lu C. S. (2004) Two novel mutations of the glycine receptor gene in a Taiwanese hyperekplexia family. *Neurology* **63**, 893–896.
- Unwin N. (2005) Refined structure of the nicotinic acetylcholine receptor at 4 Å resolution. *J. Mol. Biol.* **346**, 967–989.
- Wässle H. (2004) Parallel processing in the mammalian retina. *Nat. Rev. Neurosci.* **10**, 747–757.
- Yevenes G. E., Peoples R. W., Tapia J. C., Parodi J., Soto X., Olate J. and Aguayo L. G. (2003) Modulation of glycine-activated ion channel function by G-protein betagamma subunits. *Nat. Neurosci.* **6**, 819–824.
- Young T. L. and Cepko C. L. (2004) A role for ligand-gated ion channels in rod photoreceptor development. *Neuron* **41**, 867–879.

Copyright of Journal of Neurochemistry is the property of Blackwell Publishing Limited and its content may not be copied or emailed to multiple sites or posted to a listserv without the copyright holder's express written permission. However, users may print, download, or email articles for individual use.