

Walking and primary prevention: a meta-analysis of prospective cohort studies

M Hamer, Y Chida

► Additional supplementary material is published online only at <http://bjsm.bmj.com/content/vol42/issue4>

Department of Epidemiology and Public Health, University College London, London, UK

Correspondence to: M Hamer, Department of Epidemiology and Public Health, University College London, London, UK; m.hamer@ucl.ac.uk

Accepted 20 November 2007
Published Online First
28 November 2007

ABSTRACT

Objective: To quantify the association between walking and the risk of cardiovascular disease (CVD) and all-cause mortality in healthy men and women.

Data sources: Medline, Cochrane Database of Systematic Reviews, and Web of Science databases were searched to May 2007.

Study selection: Prospective epidemiological studies of walking and CVD and all-cause mortality.

Results: 18 prospective studies were included in the overall analysis, which incorporated 459 833 participants free from CVD at baseline with 19 249 cases at follow-up. From the meta-analysis the pooled hazard ratio of CVD in the highest walking category compared with the lowest was 0.69, (95% CI 0.61 to 0.77, $p < 0.001$), and 0.68 (0.59 to 0.78, $p < 0.001$) for all-cause mortality. These effects were robust among men and women, although there was evidence of publication biases for the associations with CVD risk. Walking pace was a stronger independent predictor of overall risk compared with walking volume (48% versus 26% risk reductions, respectively). There was also evidence of a dose–response relationship across the highest, intermediate, and lowest walking categories in relation to the outcome measures.

Conclusions: The results suggest walking is inversely associated with clinical disease endpoints and largely support the current guidelines for physical activity. The mechanisms that mediate this relationship remain largely unknown and should be the focus of future research.

The World Health Organization has stated that overall physical inactivity is estimated to cause 1.9 million deaths and 19 million disability adjusted life years globally. The current guidelines on cardiovascular prevention recommend at least 30 minutes of moderate intensity physical activity on five or more days of the week or 20 minutes of vigorous exercise on three days of the week.¹ A substantial proportion of adults do not, however, achieve these guidelines,^{2–3} with an estimated 60% of the global population failing to meet minimum amounts of activity. Moderate intensity physical activities that can be incorporated into everyday life, such as walking, may be beneficial for improving adherence levels. Indeed, walking appears to be the preferred activity among sedentary individuals taking up physical activity.⁴ Much of the earlier epidemiological work has examined general leisure time physical activity or energy expenditure, but did not consider specific activities. A previous meta-analysis has shown beneficial effects of walking on blood pressure in controlled trials,⁵ although we are unaware of any work to date that has systematically reviewed walking as a

specific activity in relation to chronic disease endpoints. The magnitude, dose–response relationship, and effectiveness of walking compared with more vigorous activities remain unclear. We therefore systematically reviewed evidence from prospective epidemiological studies of walking and cardiovascular disease (CVD) and all-cause mortality. We primarily addressed four questions: (1) is walking associated with a risk of CVD and all-cause mortality? (2) are there any gender differences? (3) is walking volume or intensity more beneficial? (4) is there evidence of a dose–response relationship?

METHODS

Study selection and data extraction

We adhered to the guidelines for reporting meta-analysis of observational studies in epidemiology (MOOSE).⁶ We searched Medline, the Cochrane Database of Systematic Reviews, and Web of Science databases from 1970 to 2007 using key words “physical activity” or “walking” or “exercise” in combination with “coronary heart disease”, “cardiovascular disease”, and “mortality” and also examined the reference lists of the retrieved articles. We limited the current systematic review to prospective cohort epidemiological studies in an attempt to eliminate selection and recall bias. We also excluded studies in which the effects of walking were combined with other activities such as cycling in commuting activity. Taken together, the criteria for inclusion were as follows: (1) English language full-length publication in a peer-reviewed journal; (2) prospective cohort studies in healthy men and women at baseline, with measures of CVD (fatal and non-fatal) and/or all-cause mortality at follow-up; (3) measures of habitual walking volume (time/distance) or intensity at baseline. Incident CVD was identified from a range of outcomes in the present studies, which included death from coronary causes, myocardial infarction, angina pectoris, stroke, congestive heart failure, and coronary revascularisation procedures. Information on participants and study characteristics, measurement of exposure and outcome, adjustment for potential confounders, and hazard ratio (HR) or relative risks (RR) with 95% confidence intervals (CI) was abstracted by one author (MH) and verified by another (YC). Assessment of quality was made on the basis of the accuracy of the self-reported physical activity questionnaire, evaluation of outcome, and adjustment for potential confounding, which comprised a total score ranging from 0 to 7 (shown in supplementary material available online only). Quality and validity were assessed

independently by both reviewers and any discrepancies were resolved by discussion.

Statistical analysis

We employed random effects modelling to meta-analyse the data, which allows for heterogeneity between studies.⁷ HR or RR was used as a measure of the association between walking and CVD/all-cause mortality. The majority of studies employed Cox proportional hazard models to examine associations of walking and outcomes, thus for the present analyses we assumed RR to be a valid approximation of HR, thereby enabling the use of one consistent measure throughout. In each case we extracted risk estimates for the highest versus the lowest reported walking volume/intensity (referent group). RR or HR were transformed by taking their natural logarithms and standard errors were calculated from \ln RR or \ln HR and corresponding 95% CI. We used the inverse variance method to weight studies for the combined overall statistic. In all analyses we used risk estimates from multivariate models with the most complete adjustment for potential confounders. We employed the Q-test for homogeneity between studies, which tests whether the between-study variability in effect sizes exceeds that expected from corresponding within-study variability. To detect publication biases we explored heterogeneity in funnel plots and the degree of asymmetry by using Begg's asymmetry method.⁸ In our main analyses, data for CVD and all-cause mortality outcomes were analysed separately, although different types of walking exposures, such as walking pace and walking time/distance categories were combined. We performed subgroup analyses for men versus women and walking volume (time/distance) versus walking pace. We also performed further sensitivity analyses based on study quality. All analyses were performed on a Macintosh G4 using a meta-analysis program (Shinko-Koueki, Tokyo, Japan).⁹

RESULTS

We identified 4295 articles in the literature search, which is shown in the flow diagram (see supplementary material available on-line only). Of these, 18 cohort studies met the full inclusion criteria, which incorporated 459 833 participants and 19 249 cases with a mean follow up of 11.3 years (see table 1). The total quality scores for each study ranged from 3 to 6, averaging 5.3 (see supplementary material available on-line only). Thirteen studies examined CVD and 10 studies recorded all-cause mortality. Seven studies were performed in men only, six in women, and five in mixed samples. Self-reported walking time was most frequently examined in 11 studies, four studies recorded walking distance, six walking pace, and two energy expenditure. The categorisation of the highest walking exposure groups averaged more than 5.2 hours per week or more than 17.2 km per week, although there was considerable variation between studies, which ranged from more than 1 hour per week to more than 2 hours per day and more than 9.7 km per week to more than 20 km per week. Walking pace was generally assessed as a "relative" rather than an "absolute" measurement, although several studies^{15 22} defined "brisk" as more than 4.8 km per hour and "moderate" as 3.2–4.6 km per hour.

Figures 1 and 2 show the associations between walking and CVD and all-cause mortality, respectively. The pooled HR of CVD in the highest walking category compared with the lowest was 0.69 (95% CI 0.61–0.77, $p < 0.001$), and 0.68 (0.59–0.78, $p < 0.001$) for all-cause mortality. There was significant heterogeneity for the effect of walking on CVD, χ^2 (17) = 47.68, $p < 0.001$, and all-cause mortality, χ^2 (13) = 57.86, $p < 0.001$.

There was also evidence of publication bias in the case of CVD ($p = 0.007$), which suggests unpublished negative findings from smaller studies may exist. There was no evidence of publication bias for all-cause mortality ($p = 0.24$). In addition, we examined the HR of minimal walking levels compared with the referent category in an attempt to address the dose–response issue (using the same studies as for the main analyses). In these analyses, the average walking time/distance in the minimal walking categories was approximately 3 hours per week (ranging from ~30 minutes per week to ~5 hours per week) or 9.8 km per week (ranging from ~5 km per week to ~15 km per week), which equated to a casual or moderate walking pace of approximately 3 km per hour. The pooled HR for CVD was 0.84 (0.79 to 0.90, $p < 0.001$; χ^2 (14) = 15.84, $p = 0.32$), and 0.80 (0.71 to 0.91, $p < 0.001$; χ^2 (9) = 29.78, $p < 0.001$) for all-cause mortality. These effects did not display publication biases. Taken together these analyses provide evidence for a dose–response relationship, with the strongest effects observed at the higher walking volume/intensity.

Subgroup analyses and confounding

In the various subgroup analyses that we performed there were no differences in effect sizes between men and women (see figs 1 and 2), although the effects in women displayed less heterogeneity for CVD, χ^2 (8) = 10.54, $p = 0.23$, and all-cause mortality, χ^2 (3) = 10.0, $p = 0.04$ compared with large heterogeneity in men. When we compared walking volume (time and distance)^{10–18 20–22 24–26} with walking pace (intensity)^{15 19 20 22 26} in a combined analysis of CVD and all-cause mortality the effects were more robust for brisk walking pace, HR = 0.52 (0.48 to 0.57, $p < 0.001$), χ^2 (6) = 4.8, $p = 0.57$, compared with higher walking volume, HR = 0.74 (0.69 to 0.80, $p < 0.001$), χ^2 (22) = 44.6, $p = 0.003$. A dose–response effect was again demonstrated at moderate pace walking (0.71, 0.62 to 0.81, $p < 0.001$) and lower levels of walking volume (0.90, 0.85 to 0.95, $p < 0.001$). The levels of walking in higher and lower walking volume groups in these analyses were comparable to those described in previous analyses.

The adjustments for potential confounding are displayed in table 1. Virtually all studies made adjustments for age, smoking, and alcohol. Two other potentially important confounders, however, adiposity and other physical activities, were not consistently included. Only five studies adjusted for both of these important confounders^{11 16 17 25 26} although sensitivity analyses that compared the effects of these studies with the others did not uncover any notable effects. We also performed further sensitivity analyses based on study quality scores, which compared the effects of high quality studies (with a score of 6) with lower quality studies (with a score of less than 6) although the results were unremarkable.

DISCUSSION

The main aim of the present meta-analysis was to examine the association of walking with cardiovascular risk and all-cause mortality. Cumulative evidence from 18 prospective cohort studies suggests there is an inverse dose–response relationship between walking and these clinical endpoints. Significant associations were also observed at lower walking levels that are equivalent to the current guidelines for cardiovascular prevention, which recommend at least 2.5 hours per week of moderate intensity physical activity.

We did not find any gender differences for the effects of walking. Our analyses, however, demonstrated more robust effects for self-reported walking pace than for walking volume.

Table 1 Cohort studies of walking and primary prevention

Source	Country/cohort	Sex	Age at baseline/ follow-up, years	Total N/no of cases, risk estimate	Walking assessment/ categories	Outcome	Adjustments
LaCroix <i>et al</i> ¹⁰	USA	M/F	>65, 4–5	1645/131 (RR)	Self-reported walking time (<1–>4 hours/week)	CVD*†‡/all-cause mortality Hospital record	Age, sex, BMI, BP ethnicity, education, income, PF, smoking, alcohol, medications
Wannamethee <i>et al</i> ¹¹	UK/British Regional Heart Study	M	40–59, 5	4311/219 (HR)	Self-reported walking time (0–>1 hour/day)	All-cause mortality Medical record	Age, smoking, social class, BMI, self-rated health, other PA
Hakim <i>et al</i> ¹²	Hawaii/Honolulu Heart Program	M	61–81, 12	707/208 (HR)	Self-reported walking distance (0–>3.2 km/day)	CVD*,†/all-cause mortality Death record	Age, cholesterol, BP, DM, alcohol, fat & calorie intake, overall PA
Bijnen <i>et al</i> ¹³	Netherlands/Zutphen Study	M	64–84, 10	802/373 (HR)	Self-reported walking time (0–>1 hour/week)	CVD*,†/all-cause mortality Death record	Age, smoking, alcohol, disease history
Hakim <i>et al</i> ¹⁴	Hawaii/Honolulu Heart Program	M	71–93, 2–4	2678/109 (HR)	Self-reported walking distance (0–>2.4 km/day)	CVD* (fatal & non-fatal) Hospital record	Age, cholesterol, BP, DM, alcohol, fat & calorie intake, overall PA
Manson <i>et al</i> ¹⁵	USA/Nurse's Health Study	F	40–65, 8	72 488/645 (RR)	Self-reported walking time/pace (0–>3 hours/week; casual–fast)	CVD‡ (fatal & non-fatal) Medical record	Age, BMI, smoking, alcohol, menopause, hypertension, DM, vitamin & aspirin intake
Sesso <i>et al</i> ¹⁶	USA/College Alumni Health Study	F	39–69, 31	1564/181 (HR)	Self-reported walking distance (0–>9.7 km/week)	CVD‡,§,*** (fatal & non-fatal) Self-report/death record	Age, BMI, hypertension, DM, smoking, overall PA
Sesso <i>et al</i> ¹⁷	USA/Harvard Alumni	M	39–88, 16	12 516/2135 (HR)	Self-reported walking distance (<5–>20 km/week)	CVD‡,§,*** (fatal & non-fatal) Self-report/death record	Age, BMI, hypertension, DM, smoking, alcohol, overall PA
Stessman <i>et al</i> ¹⁸	Israel/Jerusalem 70-year olds	M/F	70, 6	456/24 (RR)	Self-reported walking time (0–>4 hours/week)	All-cause mortality Death record	Sex, smoking, economic hardship, disease history
Davey Smith <i>et al</i> ¹⁹	UK/Whitehall II	M	40–64, 25	6702/2859 (HR)	Self-reported walking pace (slow–fast)	CVD*†‡/all-cause mortality Death record	Age, work grade, BMI, FEV, smoking, BP, cholesterol.
Lee <i>et al</i> ²⁰	USA/Women's Health Study	F	>45, 5	39 372/244 (HR)	Self-reported walking time/pace (0–>2 hours/week; normal–fast)	CVD*,†,§,*** (fatal & non-fatal) Self-report, death record	Age, smoking, alcohol, fat intake, fibre, fruit & veg, menopause, HRT
Manson <i>et al</i> ²¹	USA/Women's Health Initiative Observational Study	F	50–79, 5.9	73 743/1896 (HR)	Self-reported walking time/pace (0–>3 hours/week; casual–fast)	CVD†,‡,§,¶,*** (fatal & non fatal) Medical records	Age, smoking, education, ethnicity, family income, BMI, WHR, alcohol, age at menopause, HRT, fat, fibre, fruit & veg intake
Tanasescu <i>et al</i> ²²	USA/Health Professional's Study	M	40–75, 12	44 452/1700 (HR)	Self-reported walking time/pace (0–>3 hours/week; normal–fast)	CVD*,† (fatal & non-fatal) Medical records, death records	Age, smoking, alcohol, nutrient intake, cholesterol, DM, hypertension
Gregg <i>et al</i> ²³	USA/Study of Osteoporotic Fractures	F	>65, 12.5	9518/2218 (HR)	Self-reported walking (<70–>898 kcal/week)	CVD*/all-cause mortality Death record	Age, smoking, BMI, diabetes hypertension, stroke, self-rated health
Fujita <i>et al</i> ²⁴	Japan/Miyagi Cohort	M/F	40–64, 10	41 163/1879 (HR)	Self-reported walking (0–>1 hour/day)	All-cause mortality Death record	Age, sex, education, marital status, disease history, smoking, alcohol, BMI, fruit & veg intake
Noda <i>et al</i> ²⁵	Japan/JACC	M/F	40–79, 9.7	73 265/1946 (HR)	Self-reported walking time (0–>1 hour/day)	CVD*†‡ mortality Death record	Age, sex, sports time, BMI, smoking, alcohol, sleep, education, hypertension, DM, sleep, mental stress, job style, fish intake
Schnohr <i>et al</i> ²⁶	Denmark Copenhagen City Heart Study	M/F	20–93, 10–13	7308/1391 (HR)	Self-reported walking time/pace (0–>2 hours/day; slow–fast)	All-cause mortality Death record	Age, sports activities, BMI, BP, DM, cholesterol, medication, alcohol, smoking, income, education
Matthews <i>et al</i> ²⁷	China/Shanghai Women's Health Study	F	40–70, 5.7	67 143/1091 (HR)	Self-reported walking (0–>10 MET hours/day)	CVD*†‡/all-cause mortality Death record	Age, marital status, income, education, alcohol, smoking, pregnancies, contraceptives, menopause, other physical activity, hypertension, DM

BMI, body mass index; BP, blood pressure; CVD, cardiovascular disease (identified from *coronary heart disease endpoint, †stroke, ‡myocardial infarction, §angina pectoris, ¶congestive heart failure, **coronary revascularisation procedures); DM, diabetes mellitus; FEV, forced expiratory volume; HR, hazard ratio; HRT, hormone replacement therapy; MET, metabolic equivalent; PA, physical activity; PF, physical functioning; RR, relative risk; WHR, waist-to-hip ratio.

This finding might reflect the fact that exercise intensity is a more sensitive predictor of clinical endpoints. Some reports have suggested that only vigorous activities are associated with reduced risk,^{28–31} although others have advocated that moderate intensity activities may also confer benefit.^{32–34} In two of the largest cohorts in women to date, vigorous exercise did not confer any greater protection than walking,^{15 21} although the highest level of vigorous exercise in these studies was relatively

low compared with men from other studies, thus the findings may reflect a lack of range of vigorous exercise to detect significant effects. The recently updated guidelines on physical activity and health, however, suggest that combinations of vigorous and moderate intensity activity may also be beneficial.¹ It is also possible that the different effects of walking pace and volume merely reflect a measurement issue, indicating that participants can more accurately recall walking pace than

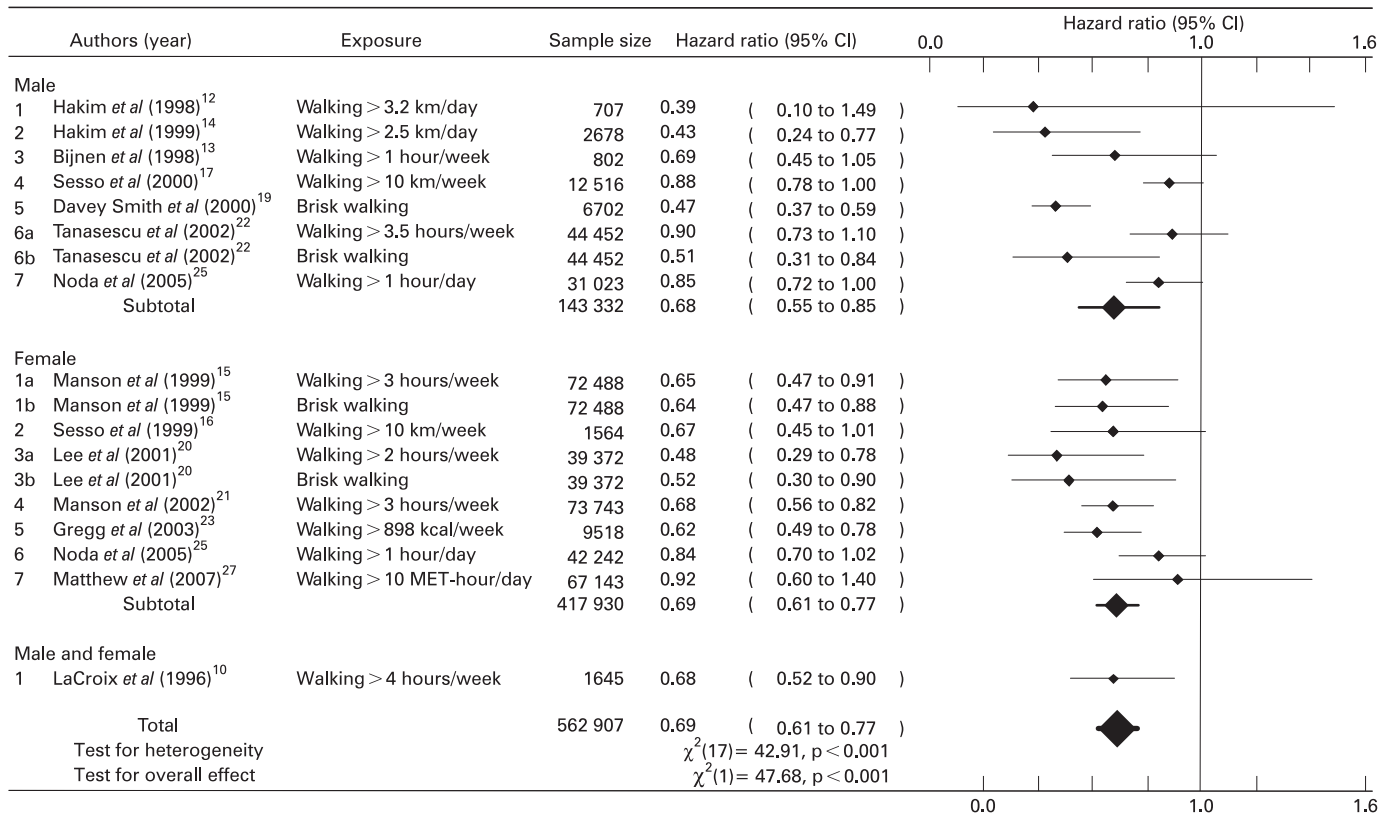


Figure 1 The association between walking and cardiovascular risk in men and women. The referent group refers to the lowest walking (volume/intensity) group and hazard ratios of less than 1.0 suggest benefits of walking. MET, metabolic equivalent.

walking volume. Indeed, a recent study demonstrated that when participants were instructed to self-select “brisk” walking pace, this prompted more vigorous activity that equated to 68%

maximal oxygen uptake.³⁵ Previous research has also suggested that “relative” exercise intensity is reliably associated with CVD risk in comparison with “absolute” intensity.²⁸

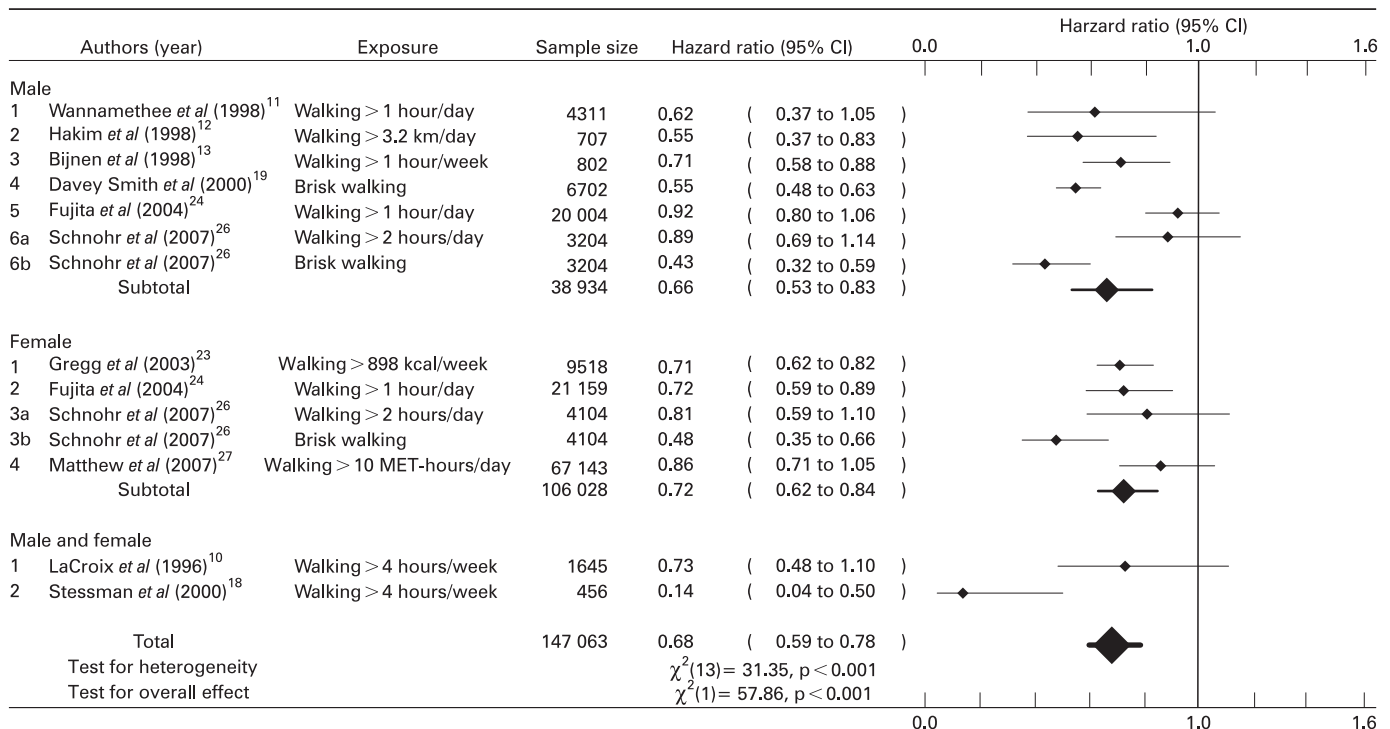


Figure 2 The association between walking and all-cause mortality in men and women. The referent group refers to the lowest walking (volume/intensity) group and hazard ratios of less than 1.0 suggest benefits of walking. MET, metabolic equivalent.

Review

What is already known on this topic

- ▶ A large proportion of adults do not undertake sufficient physical activity
- ▶ Walking is the preferred activity among sedentary individuals taking up physical activity
- ▶ The magnitude, dose–response relationship, and effectiveness of walking compared with more vigorous activities for preventing chronic disease remain unclear

What this study adds

- ▶ Walking is associated with lower risks of CVD and all-cause mortality in men and women
- ▶ A dose–response relationship exists, with minimal benefits achieved, on average at approximately 3 hours per week walking at moderate pace. Greater benefits can be achieved especially for increased walking pace

There may be large variations in the individual level of exercise intensity that is elicited by a given dose of walking, which may differ according to age, gender, baseline fitness levels and physical function, and environmental factors, thus relative measures are useful indicators in epidemiological studies.

We found evidence for a linear dose–response relationship for both walking pace and volume in relation to clinical endpoints. These findings are not consistent with a recent meta-analysis of randomised controlled trials in which there were no linear dose–response relationships between walking volume and a number of cardiovascular risk factors.⁵ The authors, however, described an intensity versus volume tradeoff, suggesting that lower volume walking interventions tended to prescribe walking at higher relative intensities that may confer the same benefit as walking for longer periods at lower intensity. The discrepancy between the results of the present study and those of the previous meta-analysis may also be explained by greater exposure times in epidemiological studies and the possibility that only limited effects can be observed from relatively short-term interventions. Alternatively, the association of walking with different intermediate health outcomes may not be the same. In addition, it is likely that the participants in some trials were not sedentary at baseline, thus leading to the possibility of a ceiling effect.

One of the main difficulties in epidemiological analyses is to exclude the possibility of residual confounding, which may otherwise explain the association between two variables. In the present analyses we used risk estimates from multivariate models with the most complete adjustment for potential confounders. We observed limited adjustment for certain confounders, however, such as other forms of physical activity. Given that individuals who are regularly walking may lead a generally more active lifestyle, some of the benefits of walking may be especially confounded by other forms of physical activity. Given that one of the benefits of taking up a walking programme may be to develop a generally more active lifestyle, then this might be considered an intermediate variable in the causal relationship and further controlling for other activity represents over-adjustment. Similarly, the role of adiposity in mediating the effects of physical activity is a controversial

area,³⁶ and if adiposity is indeed an intermediate factor then adjustment may diminish the true effects of walking. Another important confounding variable that was seldom considered was the impact of physical functioning on the ability to walk. Because various disease processes have been related to disability,^{37–38} impairment in activities of daily living could mediate associations between walking and mortality. Finally, an important issue is publication bias. Our analyses suggest the presence of unpublished negative findings, which may be because epidemiological studies in physical activity do not consistently collect and present detailed measures of self-reported walking. Indeed, we excluded a large number of studies because results were more often presented for total physical activity and not specific activity types.

Several plausible mechanisms exist for the association between walking and reduced cardiovascular risk. In a previous review of 24 randomised controlled trials, walking interventions increased aerobic capacity and reduced adiposity and diastolic blood pressure in previously sedentary adults.⁵ We have also demonstrated inverse associations between weekly walking duration and markers of haemostasis and inflammation in middle-aged men and women, independently of other risk factors.³⁹ The association between walking and the risk of all-cause mortality may be partly due to a reduced risk of cancer^{12–19–23} although further research is required to confirm these findings.

In conclusion, our results suggest that walking is inversely associated with CVD risk and all-cause mortality in men and women. The effects are stronger for self-reported walking pace than walking volume. Our analyses suggest that publication bias may be present, thus future epidemiological studies should be encouraged to present effects for different types of physical activities, such as walking. Nevertheless, the present findings largely support the current recommendations for physical activity that emphasise moderate intensity activity. Public health policy that presently promotes community-based walking programmes should therefore be encouraged.⁴⁰

Acknowledgements: MH had full access to all of the data in the study and takes responsibility for the integrity of the data and the accuracy of the data analysis. MH was responsible for the study concept and design and acquisition of data. Both authors were responsible for the analysis and interpretation of data. MH drafted the manuscript and both authors were responsible for critical revision of the manuscript for important intellectual content. YC was responsible for statistical analysis.

Funding: Dr Hamer is supported by a British Heart Foundation (UK) grant. The funding agencies had no role in the design and conduct of the study; in the collection, management, analysis, and interpretation of the data; or in the preparation, review, or approval of the manuscript.

Competing interests: None.

REFERENCES

1. **Haskell WL**, Lee IM, Pate RR, *et al*. Physical activity and public health. Updated recommendation for adults from the American College of Sports Medicine and the American Heart Association. *Circulation* 2007;**116**:1081–93.
2. **Barnes PM**, Schoenborn CA. *Physical activity among adults: United States 2000*. Advance data from vital health statistics, no. 333. Hyattsville, MD: National Center for Health Statistics, 2003.
3. **Stamatakis E**, Ekelund U, Wareham NJ. Temporal trends in physical activity in England: the Health Survey for England 1991 to 2004. *Prev Med* 2007;**45**:416–23.
4. **Dunn AL**, Garcia ME, Marcus BH, *et al*. Six-month physical activity and fitness changes in Project Active, a randomized trial. *Med Sci Sports Exerc* 1998;**30**:1076–83.
5. **Murphy MH**, Nevill AM, Murtagh EM, *et al*. The effect of walking on fitness, fatness and resting blood pressure: a meta-analysis of randomised, controlled trials. *Prev Med* 2007;**44**:377–85.
6. **Stroup DF**, Berlin JA, Morton SC, *et al*. Meta-analysis of observational studies in epidemiology: a proposal for reporting. Meta-analysis Of Observational Studies in Epidemiology (MOOSE) Group. *JAMA* 2000;**283**:2008–12.

7. **Dersimonian R**, Laird N. Meta-analysis in clinical trials. *Control Clin Trials* 1986;**7**:177–88.
8. **Begg CB**, Berlin JA. Publication bias and dissemination of clinical research. *J Natl Cancer Inst* 1989;**81**:107–15.
9. **Masui K**. Meta-analysis software user's guide. In: Masui K, ed. *Kokokara-hajimeru meta-analysis*. Tokyo: Shinko-Koueki Medical Press, 2003:91–121.
10. **LaCroix AZ**, Leveille SG, Hecht JA, *et al*. Does walking decrease the risk of cardiovascular disease hospitalizations and death in older adults? *J Am Geriatr Soc* 1996;**44**:113–20.
11. **Wannamethee SG**, Shaper AG, Walker M. Changes in physical activity, mortality, and incidence of coronary heart disease in older men. *Lancet* 1998;**351**:1603–8.
12. **Hakim AA**, Petrovitch H, Burchfiel CM, *et al*. Effects of walking on mortality among nonsmoking retired men. *N Engl J Med* 1998;**338**:94–9.
13. **Bijnen FC**, Caspersen CJ, Feskens EJ, *et al*. Physical activity and 10-year mortality from cardiovascular diseases and all causes: the Zutphen Elderly Study. *Arch Intern Med* 1998;**158**:1499–505.
14. **Hakim AA**, Curb JD, Petrovitch H, *et al*. Effects of walking on coronary heart disease in elderly men: the Honolulu Heart Program. *Circulation* 1999;**100**:9–13.
15. **Manson JE**, Hu FB, Rich-Edwards JW, *et al*. A prospective study of walking as compared with vigorous exercise in the prevention of coronary heart disease in women. *N Engl J Med* 1999;**341**:650–8.
16. **Sesso HD**, Paffenbarger RS, Ha T, *et al*. Physical activity and cardiovascular disease risk in middle-aged and older women. *Am J Epidemiol* 1999;**150**:408–16.
17. **Sesso HD**, Paffenbarger RS Jr, Lee IM. Physical activity and coronary heart disease in men: the Harvard Alumni Health Study. *Circulation* 2000;**102**:975–80.
18. **Stessman J**, Maaravi Y, Hammerman-Rozenberg R, *et al*. The effects of physical activity on mortality in the Jerusalem 70-Year-Olds Longitudinal Study. *J Am Geriatr Soc* 2000;**48**:499–504.
19. **Davey Smith G**, Shipley MJ, Batty GD, *et al*. Physical activity and cause-specific mortality in the Whitehall Study. *Public Health* 2000;**114**:308–15.
20. **Lee IM**, Rexrode KM, Cook NR, *et al*. Physical activity and coronary heart disease in women: is "no pain, no gain" passe? *JAMA* 2001;**285**:1447–54.
21. **Manson JE**, Greenland P, LaCroix AZ, *et al*. Walking compared with vigorous exercise for the prevention of cardiovascular events in women. *N Engl J Med* 2002;**347**:716–25.
22. **Tanasescu M**, Leitzmann MF, Rimm EB, *et al*. Exercise type and intensity in relation to coronary heart disease in men. *JAMA* 2002;**288**:1994–2000.
23. **Gregg EW**, Cauley JA, Stone K, *et al*. Relationship of changes in physical activity and mortality among older women. *JAMA* 2003;**289**:2379–86.
24. **Fujita K**, Takahashi H, Miura C, *et al*. Walking and mortality in Japan: the Miyagi Cohort Study. *J Epidemiol* 2004;**14**:S26–32.
25. **Noda H**, Iso H, Toyoshima H, *et al*. Walking and sports participation and mortality from coronary heart disease and stroke. *J Am Coll Cardiol* 2005;**46**:1761–7.
26. **Schnohr P**, Scharling H, Jensen JS. Intensity versus duration of walking, impact on mortality: the Copenhagen City Heart Study. *Eur J Cardiovasc Prev Rehabil* 2007;**14**:72–8.
27. **Matthews CE**, Jurj AL, Shu XO, *et al*. Influence of exercise, walking, cycling, and overall nonexercise physical activity on mortality in chinese women. *Am J Epidemiol* 2007;**165**:1343–50.
28. **Lee IM**, Sesso HD, Oguma Y, *et al*. Relative intensity of physical activity and risk of coronary heart disease. *Circulation* 2003;**107**:1110–16.
29. **Morris JN**, Everitt MG, Pollard R, *et al*. Vigorous exercise in leisure-time: protection against coronary heart disease. *Lancet* 1980;**2**:1207–10.
30. **Lakka TA**, Venalainen JM, Rauramaa R, *et al*. Relation of leisure-time physical activity and cardiorespiratory fitness to the risk of acute myocardial infarction. *N Engl J Med* 1994;**330**:1549–54.
31. **Lee IM**, Hsieh CC, Paffenbarger RS Jr. Exercise intensity and longevity in men. The Harvard Alumni Health Study. *JAMA* 1995;**273**:1179–84.
32. **Leon AS**, Connett J, Jacobs DR Jr, *et al*. Leisure-time physical activity levels and risk of coronary heart disease and death. The Multiple Risk Factor Intervention Trial. *JAMA* 1987;**258**:2388–95.
33. **Slattery ML**, Jacobs DR Jr, Nichaman MZ. Leisure time physical activity and coronary heart disease death. The US Railroad Study. *Circulation* 1989;**79**:304–11.
34. **Shaper AG**, Wannamethee G, Weatherall R. Physical activity and ischaemic heart disease in middle-aged British men. *Br Heart J* 1991;**66**:384–94.
35. **Murtagh EM**, Boreham CA, Murphy MH. Speed and exercise intensity of recreational walkers. *Prev Med* 2002;**35**:397–400.
36. **Blair SN**, Church TS. The fitness, obesity, and health equation: is physical activity the common denominator? *JAMA* 2004;**292**:1232–4.
37. **McDermott MM**, Ferrucci L, Liu K, *et al*. D-dimer and inflammatory markers as predictors of functional decline in men and women with and without peripheral arterial disease. *J Am Geriatr Soc* 2005;**53**:1688–96.
38. **Newman AB**, Simonsick EM, Naydeck BL, *et al*. Association of long-distance corridor walk performance with mortality, cardiovascular disease, mobility limitation, and disability. *JAMA* 2006;**295**:2018–26.
39. **Hamer M**, Steptoe A. Walking, vigorous physical activity, and markers of haemostasis and inflammation in healthy men and women. *Med Sci Sports Exerc* 2007;**39**:S311.
40. **National Institute for Health and Clinical Excellence (NICE)**. Physical activity public health intervention guidance, UK, 2006. <http://guidance.nice.org.uk/PHI2> (accessed 5 June 2007).



Walking and primary prevention: a meta-analysis of prospective cohort studies

M Hamer and Y Chida

Br J Sports Med 2008 42: 238-243 originally published online November 29, 2007

doi: 10.1136/bjsem.2007.039974

Updated information and services can be found at:
<http://bjsm.bmj.com/content/42/4/238.full.html>

These include:

References

This article cites 36 articles, 9 of which can be accessed free at:
<http://bjsm.bmj.com/content/42/4/238.full.html#ref-list-1>

Article cited in:
<http://bjsm.bmj.com/content/42/4/238.full.html#related-urls>

Email alerting service

Receive free email alerts when new articles cite this article. Sign up in the box at the top right corner of the online article.

Topic Collections

Articles on similar topics can be found in the following collections
[Editor's choice](#) (184 articles)

Notes

To request permissions go to:
<http://group.bmj.com/group/rights-licensing/permissions>

To order reprints go to:
<http://journals.bmj.com/cgi/reprintform>

To subscribe to BMJ go to:
<http://group.bmj.com/subscribe/>