

# Effect of intermittent fasting and refeeding on insulin action in healthy men

Nils Halberg,<sup>1</sup> Morten Henriksen,<sup>1</sup> Nathalie Söderhamn,<sup>1</sup>  
Bente Stallknecht,<sup>1</sup> Thorkil Ploug,<sup>1</sup> Peter Schjerling,<sup>2</sup> and Flemming Dela<sup>1</sup>

<sup>1</sup>Copenhagen Muscle Research Centre, Department of Medical Physiology, The Panum Institute, University of Copenhagen, Denmark; and <sup>2</sup>Copenhagen Muscle Research Center, Department of Molecular Muscle Biology, Rigshospitalet, Denmark

Submitted 9 June 2005; accepted in final form 22 July 2005

**Halberg, Nils, Morten Henriksen, Nathalie Söderhamn, Bente Stallknecht, Thorkil Ploug, Peter Schjerling, and Flemming Dela.** Effect of intermittent fasting and refeeding on insulin action in healthy men. *J Appl Physiol* 99: 2128–2136, 2005. First published July 28, 2005; doi:10.1152/jappphysiol.00683.2005.—Insulin resistance is currently a major health problem. This may be because of a marked decrease in daily physical activity during recent decades combined with constant food abundance. This lifestyle collides with our genome, which was most likely selected in the late Paleolithic era (50,000–10,000 BC) by criteria that favored survival in an environment characterized by fluctuations between periods of feast and famine. The theory of thrifty genes states that these fluctuations are required for optimal metabolic function. We mimicked the fluctuations in eight healthy young men [ $25.0 \pm 0.1$  yr (mean  $\pm$  SE); body mass index:  $25.7 \pm 0.4$  kg/m<sup>2</sup>] by subjecting them to intermittent fasting every second day for 20 h for 15 days. Euglycemic hyperinsulinemic ( $40$  mU·min<sup>-1</sup>·m<sup>-2</sup>) clamps were performed before and after the intervention period. Subjects maintained body weight ( $86.4 \pm 2.3$  kg; coefficient of variation:  $0.8 \pm 0.1\%$ ). Plasma free fatty acid and  $\beta$ -hydroxybutyrate concentrations were  $347 \pm 18$  and  $0.06 \pm 0.02$  mM, respectively, after overnight fast but increased ( $P < 0.05$ ) to  $423 \pm 86$  and  $0.10 \pm 0.04$  mM after 20-h fasting, confirming that the subjects were fasting. Insulin-mediated whole body glucose uptake rates increased from  $6.3 \pm 0.6$  to  $7.3 \pm 0.3$  mg·kg<sup>-1</sup>·min<sup>-1</sup> ( $P = 0.03$ ), and insulin-induced inhibition of adipose tissue lipolysis was more prominent after than before the intervention ( $P = 0.05$ ). After the 20-h fasting periods, plasma adiponectin was increased compared with the basal levels before and after the intervention ( $5,922 \pm 991$  vs.  $3,860 \pm 784$  ng/ml,  $P = 0.02$ ). This experiment is the first in humans to show that intermittent fasting increases insulin-mediated glucose uptake rates, and the findings are compatible with the thrifty gene concept.

euglycemic clamp; adiponectin

OUR GENOME WAS PROBABLY SELECTED during the Late-Paleolithic era (50,000–10,000 BC), during a time humans existed as hunter-gatherers (6). At that time there were no guarantees in finding food, resulting in intermixed periods of feast and famine. In addition, physical activity had to be a part of our ancestors' daily living as forage and the hunt for food must have been done through physical activity (15). Cycling between feast and famine, and thus oscillations in energy stores, as well as between exercise and rest, was characteristic in the Late-Paleolithic era and might have driven the selection of genes involved in the regulation of metabolism (30).

Thus our genotype selected centuries ago to favor an environment with oscillations in energy stores still exists with few if any changes. The modern sedentary lifestyle common in the westernized countries is characterized by constant high food

availability and low physical activity, and it has led to an imbalance between our genotype and the environment in which we live today. This may predispose our potential “thrifty” genes to misexpress metabolic proteins, manifesting in chronic diseases (e.g., Type 2 diabetes) in the industrialized part of the world.

It is well known that physical training increases insulin action (10). The molecular events leading to an exercise-mediated increase in insulin action are not fully characterized. In addition, energy usage during each exercise bout in the training regimen with subsequent eating creates oscillations in energy stores. These oscillations are probably not as massive as the oscillations seen between periods of feast and famine for the Late-Paleolithic people, but some similarities might exist, and we speculated whether exercise-induced oscillations in energy stores could be mimicked by intermittent fasting. This study was undertaken to test the hypothesis that 14 days of intermittent fasting and refeeding improves insulin-stimulated glucose disposal.

## MATERIALS AND METHODS

### Subjects

Eight healthy young Caucasian men (age  $25.0 \pm 0.1$  yr, body mass index  $25.7 \pm 0.4$  kg/m<sup>2</sup>) gave their written consent according to the declaration of Helsinki to participate in the study. The study was approved by the local Danish ethical committee (KF 01-109/04).

Two days before both clamp experiments (see *Experimental Procedure*), the subjects were instructed to eat at least 250 g of carbohydrate each day and to avoid strenuous exercise.

Throughout the intervention, the subjects were instructed to uphold their normal exercise habits, to maintain their usual macronutrient mixing of their meals, and to eat sufficient quantities of food on the nonfasting days to ensure that their body weight was stable. The subject characteristics are given in Table 1.

### Experimental Procedure

The subjects were examined on two occasions: before and after 14 days of fasting every second day for 20 h, giving seven fasting periods. Each fasting period started at 2200 and ended at 1800 the following day (for protocol see Fig. 1). During the fasting periods the subjects were allowed to drink water and were instructed to maintain habitual activities.

On the day of clamp experiments, the subjects arrived at the laboratory at 0800, after an overnight fast. The subjects were weighed and had their height measured and were placed in a bed position.

A microdialysis catheter was inserted in the subcutaneous fat on the abdomen (see below), and a small subcutaneous depot of <sup>133</sup>Xe was placed in close proximity (~5 cm) to the microdialysis catheter. One

Address for reprint requests and other correspondence: N. Halberg, Dept. of Medical Physiology, The Panum Institute, Blegdamsvej 3, DK-2200 Copenhagen N, Denmark (e-mail: nilsh@mfi.ku.dk).

The costs of publication of this article were defrayed in part by the payment of page charges. The article must therefore be hereby marked “advertisement” in accordance with 18 U.S.C. Section 1734 solely to indicate this fact.

Table 1. Subject characteristics

	Before the Intervention	After the Intervention
Age, yr	25±1	
Body weight, kg	87.1±2.3	86.2±2.4
BMI, kg/m <sup>2</sup>	25.7±0.4	25.5±0.3
%Body fat	20.1±0.8	20.4±1.1
Fasting plasma glucose, mmol/l	5.0±0.1	5.1±0.1
Fasting insulin, pmol/l	34±5	38±7

Data are means ± SE. BMI, body mass index. No significant differences were seen.

catheter (18-gauge, Becton Dickinson, Helsingborg, Sweden) was inserted in the medial cubital vein for infusion of glucose and insulin, and one catheter (18-gauge, Becton Dickinson) was inserted in a superficial hand vein in the retrograde direction. The hand was then placed in a heating pad for sampling of arterialized blood. After basal blood samples were obtained, concentrations of CO<sub>2</sub> and O<sub>2</sub> were measured in expiratory air by a ventilated hood and a muscle biopsy was taken from the thigh (vastus lateralis). Then the clamp was started. During the last 15 min of the 120-min clamp, CO<sub>2</sub> and O<sub>2</sub> in expiratory air were determined. At time  $t = 120$  min during the clamp, a second muscle biopsy was taken from the thigh.

During the intervention period the subjects recorded their heart rate (Ultima, Cardiosport, Denmark) 24 h a day and measured their body weight in the morning before breakfast (on nonfasting days).

During the intervention period the subjects came to the laboratory at 1700 three times (days 6, 10, and 14) for weight measurement, venous blood sampling, and measurement of expiratory gases. In addition, on day 10 a muscle biopsy (see below) was taken.

Finally, the subject's body composition was measured by dual-energy X-ray absorption scanning before and after the intervention period.

**Microdialysis.** Microdialysis was performed as described previously (44). At 08.30 a single microdialysis catheter (CMA 60, CMA, Microdialysis AB) was placed in the abdominal subcutaneous adipose tissue. At sites of perforation the skin was anesthetized. The catheter was connected to a high-precision syringe pump (CMA 100 syringe pump, CMA/Microdialysis AB). For determination of interstitial glycerol concentrations, the catheter was perfused with a fluid containing an isotonic ringer acetate buffer with 2 mM glucose, <sup>14</sup>C-glycerol (5 kBq/ml, PerkinElmer) at a speed of 1 μl/min. The relative recovery was determined by the internal reference calibration technique (37). The relative recovery was calculated as  $(\text{dpm}_p - \text{dpm}_d)/\text{dpm}_p$ , where  $\text{dpm}_p$  and  $\text{dpm}_d$  are the <sup>14</sup>C activity in the perfusate and dialysate, respectively.

**Euglycemic hyperinsulinemic clamp.** For each subject, a 50-ml insulin infusate had been prepared from insulin (100 IU/ml Atrapid, Novo Nordisk, Copenhagen, Denmark), 2.5 ml of the subject's own

plasma, and saline. Each clamp started with a 2-ml insulin infusate bolus followed by a constant infusion ( $40 \text{ mU} \cdot \text{min}^{-1} \cdot \text{m}^{-2}$ ) for 120 min. Plasma glucose concentrations were maintained at a preexperimental level by frequent analysis of arterialized blood samples (ABL-system 700, Radiometer) with subsequent adjustments of the glucose infusion rate.

**Blood flow.** Subcutaneous blood flow was determined by the standard local <sup>133</sup>Xe washout method (5, 26) in the abdominal subcutaneous adipose tissue in close proximity to the microdialysis catheter. The tissue-blood partition coefficient was set to 10 (5).

**Muscle biopsies.** Muscle biopsies were obtained from the middle portion of the vastus lateralis before and in the end of each clamp experiment. After administration of local anesthesia, an incision of 10 mm was made and the biopsy was taken (Bergström needle method modified to apply suction). In addition, smaller biopsies were obtained from the mid portion of vastus lateralis after the fourth fasting period (i.e., day 10). The biopsy was then obtained with a Tru-core I biopsy needle and instrument (Medical Device Technology, Gainesville, FL).

Muscle biopsies were quickly cleaned from visible blood and frozen in liquid nitrogen (within 15 s) and stored at  $-80^\circ\text{C}$  until further analysis.

Before analysis, the biopsies were freeze dried and carefully dissected free from connective tissue, blood, and fat. A sample of the muscle powder was used to determine glycogen content by the hexokinase method (25). Another part of the muscle powder was used to determine intramuscular triglyceride (IMTG) content by the chemical extraction method (18, 33). Briefly, the samples were homogenized in methanol and chloroform and the supernatant containing the lipids was removed and mixed with water. The lipids contained in the chloroform phase were then removed and hydrolysis was accomplished by adding tetraethylammoniumhydroxide (20%) and ethanol (1:28). After 30 min at  $60^\circ\text{C}$ , the reaction was stopped with HCl. The released acyl-glycerol was finally determined on a CMA 600 analyzer (CMA/microdialysis) and the triacylglycerol content was calculated.

**GLUT4 expression.** Expression of GLUT4 protein was measured by Western blot in a muscle biopsy obtained during the fasting condition before each clamp. Muscle biopsies were quickly cleaned from visible blood and/or fat, frozen in liquid nitrogen, and stored at  $-80^\circ\text{C}$ . The muscle tissue was subsequently homogenized with a Polytron PT 3100 (Kinematica, Littau-Luzern, Switzerland) at maximum speed for  $\sim 10$  s in 10 vol of  $\sim 55^\circ\text{C}$  buffer (4% SDS, 10 mM pyrophosphate, 2 mM sodium orthovanadate, 10 mM EDTA, 25 mM Tris·HCl, pH 6.8). Samples were sonicated for  $\sim 5$  s to break DNA strands, and total protein concentrations were determined by the bicinchoninic acid method using BSA as standard. For Western blot, 10 μg of protein were separated by SDS-PAGE on 10% gels (Criterion system, Bio-Rad, Hercules, CA) and electrophoretically transferred to polyvinylidene difluoride membranes for 45 min at 100 V by using a tank buffer system (Bio-Rad). Transfer buffer contained 25 mM Tris, 192 mM glycine, and 20% methanol. Membranes were

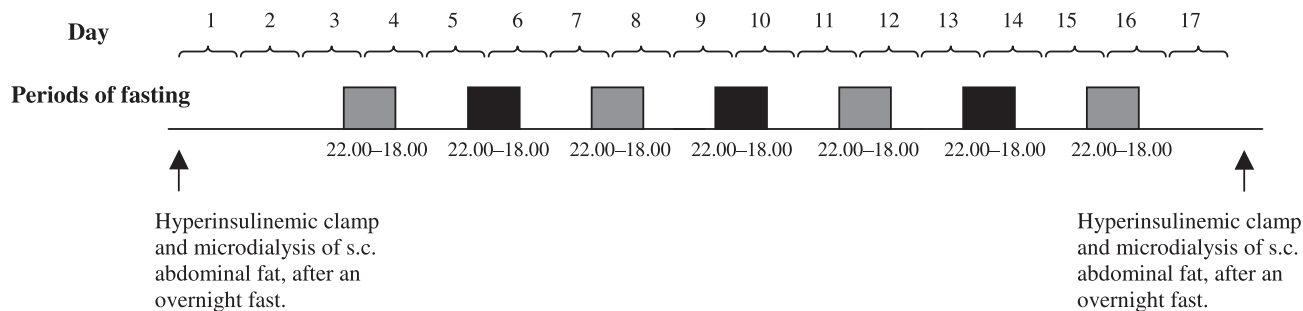


Fig. 1. Experimental protocol. Eight men were subjected to fasting (marked with bars) every second day for a total of 7 fasting periods. Before and after this intervention euglycemic clamps and microdialysis were performed. Blood samples and expiratory gas measurements were performed after the fasting on the days marked with black bars (days 6, 10, and 14). Additionally, after the fasting on day 10 a muscle biopsy was taken for measurement of glycogen and IMTG.

Table 2. Primers for real-time RT-PCR

mRNA	Sense Primer	Antisense Primer
PGC-1 $\alpha$	TCAGACCTGACACAACACGGACA	TCAAGAGCAGCAAAAAGCATCACA
GAPDH	CCTCCTGCACCACCAACTGCTT	GAGGGGCATCCACAGTCTTCT
RPLP0	GGAAACTCTGCATTCTCGCTTCT	CCAGGACTCGTTGTACCCGTTGM

blocked in 1% defatted milk powder plus 5% BSA in TS buffer [10 mM Tris (pH 7.4), 150 mM NaCl], incubated for 90 and 60 min with primary and horseradish peroxidase-labeled secondary antibodies, respectively, and diluted in blocking solution. Antigen-antibody complexes were visualized and quantitated by a LAS 3000 imaging system (Fuji Film). Monoclonal antibody F-27 was used for detection of GLUT4 (35). Signals were normalized against amount of desmin by reprobing the polyvinylidene difluoride membrane with a monoclonal antibody against desmin (DakoCytomation, Glostrup, Denmark).

**Real-time RT-PCR.** Total RNA was isolated from muscle biopsies by phenol extraction (TriReagent, Molecular Research Center) as previously described (7). Intact RNA was confirmed by denaturing agarose gel electrophoresis. Five hundred nanograms total RNA were converted into cDNA in 20  $\mu$ l by using the OmniScript reverse transcriptase (Qiagen) according to the manufacturer's protocol. For each target mRNA, 0.25  $\mu$ l cDNA was amplified in a 25- $\mu$ l SYBR Green PCR reaction containing 1 $\times$  Quantitect SYBR Green Master Mix (Qiagen) and 100 nM of each primer (Table 2). The amplification was monitored in real time using the MX3000P real-time PCR machine (Stratagene). The threshold cycle values were related to a standard curve made with the cloned PCR products. The quantities were normalized to mRNA for the large ribosomal protein P0 (RPLP0). RPLP0 was chosen as internal control, assuming RPLP0 mRNA to be constitutively expressed (14). To validate this assumption, another unrelated "constitutive" RNA, GAPDH mRNA, was measured and normalized for RPLP0. No changes in the ratio were observed.

**Blood sampling and analysis.** Arterialized blood for measurement of hormones, metabolites, and cytokines was sampled from the catheter in the hand vein at basal and at termination of the clamp. Blood was collected in iced tubes and immediately centrifuged at 4°C. Blood for determination of free fatty acids (FFA), glycerol, and  $\beta$ -hydroxybutyrate was stabilized with 10 IU heparin/ml blood. Blood for determination of insulin, interleukin 6 (IL-6), tumor necrosis factor- $\alpha$  (TNF- $\alpha$ ), leptin, and adiponectin was stabilized with 500 kalikrein inhibitory units aprotinin (Trasylol) and 10% EDTA. All plasma samples were stored at -20°C, except those for FFA, IL-6, TNF- $\alpha$ , leptin, and adiponectin, which were stored at -80°C.

Plasma concentrations of insulin, IL-6, TNF- $\alpha$ , leptin, and adiponectin were measured by sandwich ELISA and performed according to the manufacturer's instructions (insulin: DakoCytomatics; adipokines: R&D Systems, Minneapolis, MN).

Plasma FFA analysis was performed by an enzyme color assay (ACS-ACOD, WAKO) and performed according to manufacturer's instructions.  $\beta$ -Hydroxybutyrate was determined by a modification of the method of Olsen (31). The concentration of glycerol in plasma was determined by a spectrophotometric method (automatic analyzer Hitachi 912, Roche, Glostrup, Denmark).

**Indirect calorimetry.** Expiratory gases were measured on the Oxycon Pro Online Ventilated hood system (Jaeger). The measured values were averaged over 10 min of steady state.

**Statistics.** All data are presented as means  $\pm$  SE, except muscle mRNA and protein as well as plasma hormones (excluding insulin), which were log transformed before statistical analysis and are presented as geometric means  $\pm$  back-transformed SE.

Two-way ANOVA for repeated measurements was used for detection of differences between the glucose infusion rates before and after

the intermittent fasting. When a significant main effect was observed, the Student-Newman-Keuls test was used post hoc. In comparison of a single parameter before, during, and after the experiment, a one-way ANOVA for repeated measures was used. Comparison of a single parameter before and after the fasting intervention was performed with Student's paired *t*-test. The SigmaStat version 2.03 software package was used for all statistical analysis.  $P < 0.05$  was considered statistically significant in two-tailed testing.

## RESULTS

### Weight, Body Composition, and Indexes of Physical Activity

The body weight was maintained stable throughout the experiment ( $86.4 \pm 2.3$  kg,  $0.8 \pm 0.1\%$  coefficient of variation) and percent body fat was also unchanged before compared with after the fasting intervention (Table 1).

The level of habitual daily physical activity did not decrease during fasting days. Thus the average heart rate during daytime was not different during fasting ( $79 \pm 3$  min<sup>-1</sup>) compared with nonfasting days ( $80 \pm 3$  min<sup>-1</sup>).

### Whole Body Glucose Metabolism

Plasma glucose concentration during both clamps was kept constant (Fig. 2), with a coefficient of variance of  $4.4\% \pm 1.3\%$  mmol/l during the last hour of the clamps.

The glucose infusion rate was significantly increased during the last 30 min (from  $6.3 \pm 0.6$  to  $7.3 \pm 0.3$  mg $\cdot$ min<sup>-1</sup> $\cdot$ kg<sup>-1</sup>) after the fasting intervention compared with before, respectively ( $P = 0.03$ ) (Fig. 2).

### Glycerol Metabolism in Adipose Tissue

There was no effect of intermittent fasting in either the adipose tissue blood flow ( $2.4 \pm 0.5$  vs.  $2.9 \pm 0.7$  ml $\cdot$ 100 g<sup>-1</sup> $\cdot$ min<sup>-1</sup> at basal and  $2.6 \pm 0.5$  vs.  $3.1 \pm 0.5$  ml $\cdot$ 100 g<sup>-1</sup> $\cdot$ min<sup>-1</sup> at the insulin-stimulated state) or the absolute interstitial glycerol concentrations (Fig. 3A) during the clamps. However, the interstitial glycerol concentrations decreased exponentially with the insulin infusion ( $R^2 = 0.96$  before and  $R^2 = 0.99$  after the fasting intervention), and the negative slopes of the curves were larger after the fasting intervention compared with before ( $P = 0.05$ ) (Fig. 3B). This indicates that insulin had an enhanced inhibitory effect on lipolysis after intermittent fasting compared with before.

### Substrates and Metabolites

Fasting (8 h) plasma glucose concentrations were similar before ( $5.0 \pm 0.1$  mM) and after ( $5.1 \pm 0.1$  mM) the intermittent fasting period. After 20-h fasting, i.e., days 4, 6, and 10, plasma glucose concentrations were lower ( $4.6 \pm 0.1$ ,  $4.6 \pm 0.1$ , and  $4.7 \pm 0.1$  mM, respectively) compared with the shorter fasting periods (8 h) ( $P < 0.05$ ).

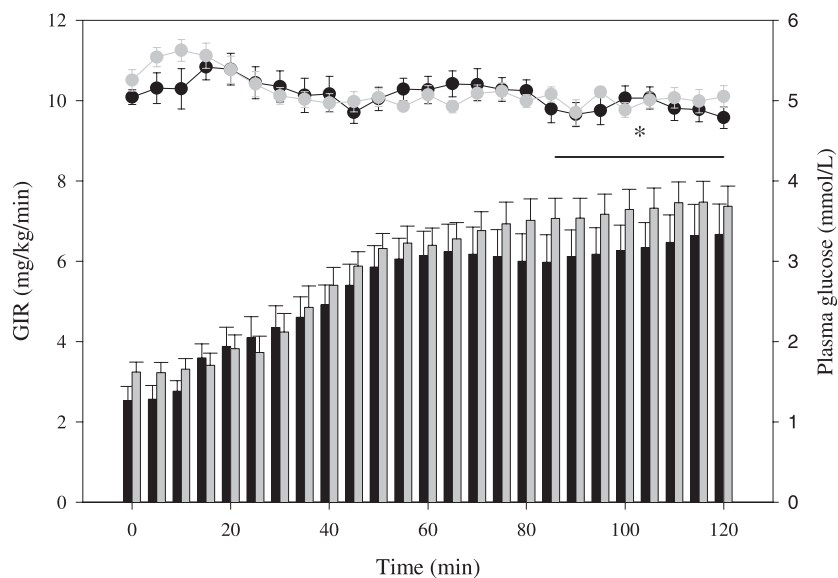


Fig. 2. Glucose infusion rate and glucose concentrations during the clamps before and after intermittent fasting for 15 days. *Left axis* (bars) shows the glucose infusion rate (GIR) necessary to maintain euglycemia during the both clamps. *Right axis* (dots) shows the arterialized plasma glucose concentrations during both experiments. Black bars and dots represents data from the clamp before the fasting intervention; gray bars and dots are data from after the fasting intervention. \* $P = 0.03$  in GIR (taken as an average over the last 30 min of the clamps) before and after the fasting intervention. Data are means  $\pm$  SE.

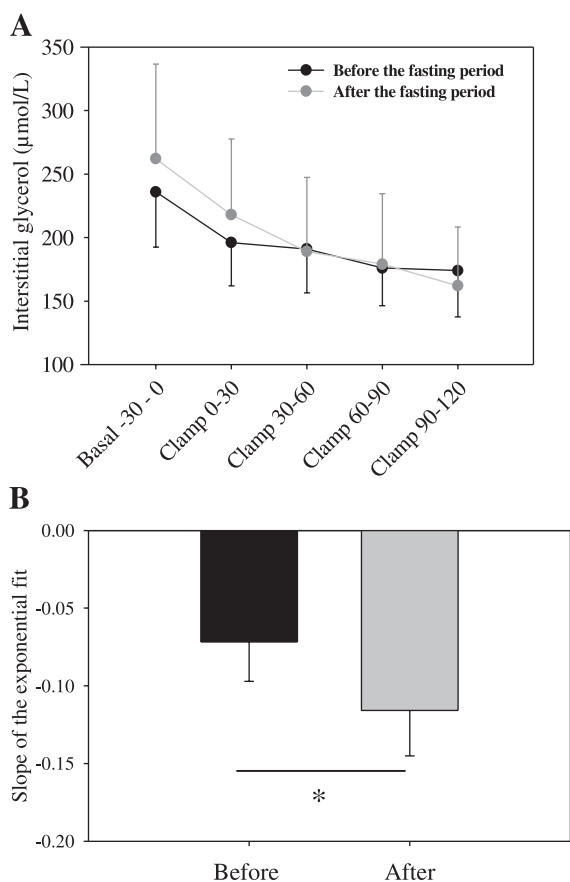


Fig. 3. *A*: insulin-mediated decrease in interstitial glycerol concentrations in subcutaneous abdominal adipose tissue before and after a period of intermittent fasting as measured by microdialysis. Basal values denote microdialysis fluid collected the last 30 min before the clamp started. During the clamp, microdialysis fluid was collected in 30-min periods. With insulin stimulation the interstitial glycerol concentrations followed an exponential drop. *B*: slope of this exponential drop. \* $P = 0.05$  between before and after the intervention. Data are means  $\pm$  SE.

Fasting (8 h) plasma  $\beta$ -hydroxybutyrate, FFA, and glycerol concentrations were similar before and after the intermittent fasting period, and all decreased ( $P < 0.05$ ) with insulin infusion (Fig. 4). After 20-h fasting, i.e., *days 4, 6, and 10*, plasma FFA and glycerol concentrations were increased compared with the shorter fasting periods ( $P < 0.05$ ) whereas the increase in  $\beta$ -hydroxybutyrate did not attain statistical significance ( $P = 0.07$ ) (Fig. 4).

*Hormones*

Fasting (8 h) plasma insulin concentrations were similar before ( $33 \pm 5$  pM) and after ( $38 \pm 7$  pM) the intermittent fasting period, and concentrations increased ( $P < 0.05$ ) with insulin infusion (to  $439 \pm 63$  and  $404 \pm 18$  pM, respectively). After 20-h fasting, i.e., *days 4, 6, and 10*, plasma insulin concentrations were unchanged ( $24 \pm 4$ ,  $24 \pm 5$ , and  $16 \pm 4$  pmol/l) compared with the shorter fasting period (Fig. 4).

Plasma adiponectin concentrations did not change with insulin infusion and were similar on the 2 clamp days (Fig. 5). However, after 20-h fasting (*days 6, 10, and 14*) a 37% increase was seen compared with the shorter fasting days ( $P = 0.02$ ).

Plasma leptin concentrations were similar on the 2 clamp days and did not change with insulin infusion (Fig. 5). However, after the 20-h fasting days (*days 6, 10, and 14*) plasma leptin concentrations decreased compared with the shorter fasting days ( $P = 0.02$ ) (Fig. 5).

No significant differences were observed in either TNF- $\alpha$  or IL-6 concentrations during this study (Fig. 5).

*Muscle Triglyceride, Glycogen, GLUT4, and PGC-1 $\alpha$  mRNA*

No overall changes were observed in concentrations of IMTG ( $P = 0.11$ ), glycogen ( $P = 0.26$ ), or mRNA content of PGC-1 $\alpha$  ( $P = 0.18$ ) when measured before and after each clamp and after fasting on *day 10* (Figs. 6 and 7). However, with insulin stimulation (data from both clamps are included), we observed a significant decrease ( $P = 0.04$ ) in the IMTG

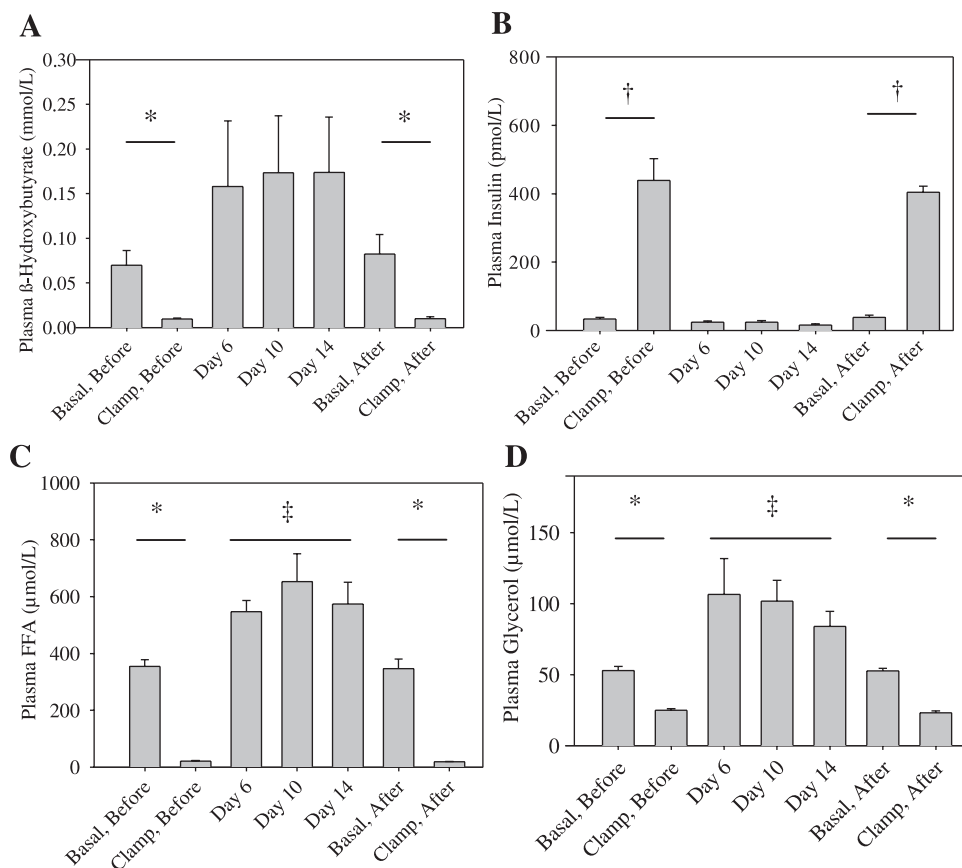


Fig. 4. Plasma concentrations of  $\beta$ -hydroxybutyrate (A), insulin (B), free fatty acids (FFA) (C), and glycerol (D), before and after clamps performed before and after 15 days of intermittent fasting, and after 20 h of fasting on days 6, 10, and 14 of the intermittent fasting intervention. \* $P < 0.05$  decrease during the clamp; † $P < 0.05$  increase during the clamp; ‡ $P < 0.05$  between the sample taken after 20 h of fasting compared with basal samples taken after an overnight fast (8 h). Data are means  $\pm$  SE.

concentration. Furthermore, total muscle GLUT4 protein content did not change with the fasting intervention ( $P = 0.66$ ) (Fig. 7).

#### Respiratory Exchange Ratios

Respiratory exchange ratios (RER) were similar at basal (after 8-h fasting) on the 2 clamp days. With insulin stimulation RER increased at both occasions (Fig. 8). No differences were observed in RER values between the overnight and the 20-h fasted state (Fig. 8).

#### DISCUSSION

In the present study we have used a very simple intervention protocol with the aim of mimicking the perturbations in energy stores that are inherent in a physical active lifestyle with regular exercise sessions. In a wider perspective we have tried to unravel the significance of genes that may be responsible for an evolutionary selection process, i.e., the thrifty genes. In this context the used intervention seems inevitably small. Nevertheless, by subjecting healthy men to cycles of feast and famine we did change the metabolic status to the better, implying that the mismatch between our ancient genotype and the lifestyle of the westernized individual of today became smaller. To our knowledge this is the first study in humans in which an increased insulin action on whole body glucose uptake and adipose tissue lipolysis has been obtained by means of intermittent fasting. This result is in accordance with previously reported in rodents (2, 32). In these studies, fasting every second day increased the insulin sensitivity approximately

sevenfold according to the homeostatic model assessment (2) and decreased the incidence of diabetes (32).

Prolonged fasting for 72 h with minimal physical activity has previously been shown to increase IMTG levels in humans (46). With the present fasting protocol and maintenance of habitual daily physical activity in the fasting periods, we had expected to detect a decrease in IMTG content in the skeletal muscle. The fact that this was not seen and that muscle glycogen content was unchanged could suggest that skeletal muscle is not immediately involved in recognition of acute energy oscillations. There is no doubt, however, that fasting for 20 h while maintaining normal daily physical activity must cause a temporary negative energy balance larger than normally experienced in a daily basis. This is also indicated by our finding of decreased plasma glucose concentrations after 20-h fasting. We did not have the possibility to estimate the hepatic glycogen stores, but from animal studies (17) we must infer that liver glycogen probably also decreased considerably during the 20-h fasting periods. It has previously been suggested that usage of muscle energy depots during fasting would be an evolutionary disadvantage, because it would lessen the capacity for physical performance and hence the ability to provide food (i.e., to hunt and gather) during periods of fasting (6, 45). The present findings support this view.

In contrast to the findings in skeletal muscle, the adipose tissue responded to the changes in energy balance as intermittent fasting changed the plasma concentrations of the adipocyte-specific hormones leptin and adiponectin. However, because we did not measure the energy stores in the adipose

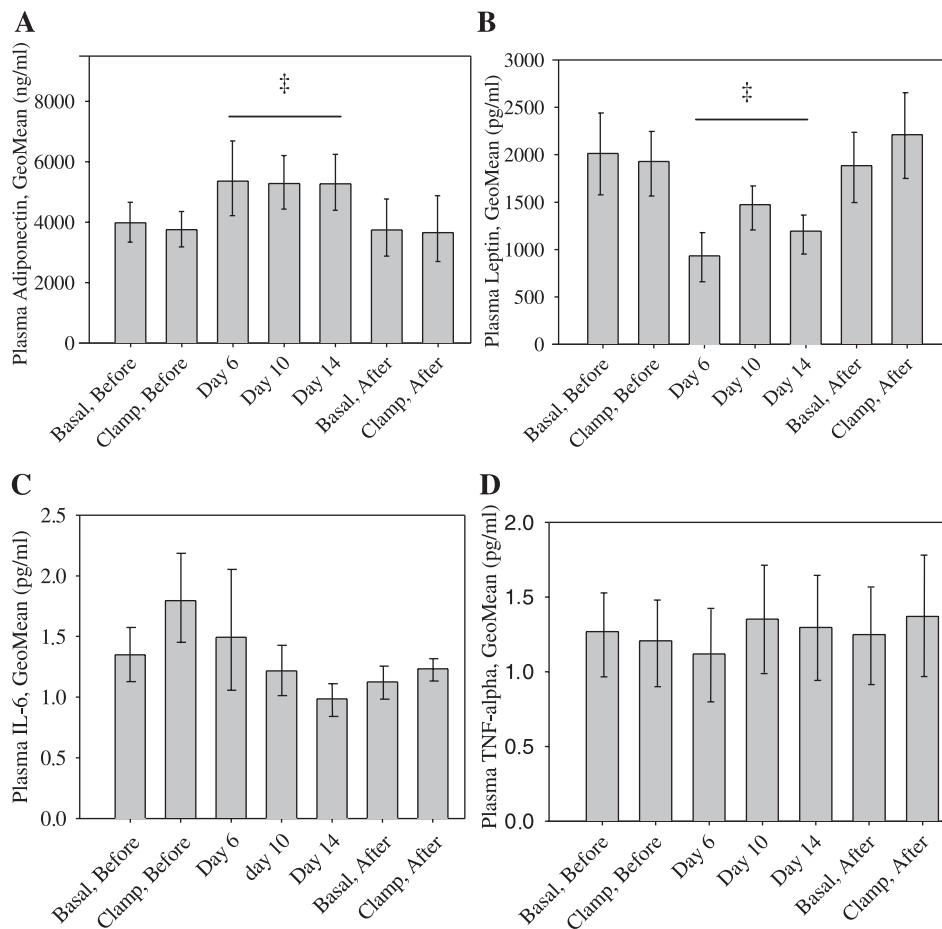


Fig. 5. Plasma concentrations of adiponectin (A), leptin (B), IL-6 (C), and TNF- $\alpha$  (D) before and after clamps performed before and after 15 days of intermittent fasting, and after 20 h of fasting on days 6, 10, and 14 of the intermittent fasting intervention. ‡ $P < 0.05$  between the sample taken after 20 h of fasting compared with basal samples taken after an overnight fast (8 h). Data are geometric means (GeoMean)  $\pm$  back-transformed SE.

tissue during the intervention (e.g., by fat cell size), we cannot determine whether the change in adipokine release is merely a secondary response to intermittent fasting or whether the adipose tissue is an active recognizer of energy oscillations.

Blood sampling for measurement of adipokines at basal levels before and after the fasting intervention was performed at 1000 whereas the three samples on days 6, 10, and 14 were taken at 1700. The amount of circulating adiponectin is constant or slightly decreased during daytime (20). Hence, the boosts of 37% we observed after each fasting period are not due to nocturnal variation. Because the plasma adiponectin concentration is positively correlated to insulin sensitivity in humans (8, 23, 29) and adiponectin administration in rodents increases insulin action (9, 38, 48), it seems likely that our finding of increases in circulating adiponectin after each fasting period would be able to exert an insulin-sensitizing effect.

Skeletal muscle content of GLUT4 protein after the overnight fast did not differ before and after the fasting intervention. Future studies will have to determine whether the insulin signaling, e.g., phosphorylation of the insulin receptor substrate, is influenced by fluctuations in energy stores and thereby accounts for the increase insulin action as measured by the clamp method reported herein.

Because 36 h passed between the last fasting period and the last clamp, it seems most likely that the potential insulin-sensitizing effects of adiponectin were due to adiponectin-induced changes in gene expression. This could in turn be mediated through an AMPK activation that further activates

several transcription factors including myocyte enhancing factor that increases GLUT4 expression (24, 27). Another possibility is that the adiponectin boosts peroxisome proliferated-activated receptor- $\gamma$  (PPAR- $\gamma$ ) expression as seen in 3T3-L1 adipocytes (1). In addition, because PPAR- $\gamma$  induces adiponectin expression (16), it can be speculated that fasting starts a positive feedback loop that results in increased levels of both circulating adiponectin and PPAR- $\gamma$ . Both are known to increase the insulin sensitivity.

A considerable increase in plasma FFA concentrations (5-fold) may raise the amount of circulating adiponectin slightly (43), and glucocorticoids positively regulate adiponectin gene expression (21). FFA and glucocorticoid increase during fasting, but in previous studies no effect of fasting on circulating adiponectin was seen (19, 49). Apart from differences in increases of FFA and glucocorticoids, different analysis methods used [RIA vs. ELISA (present study)] may recognize different isoforms of adiponectin and thereby account for the discrepancy.

Leptin exhibits nocturnal differences with a peak during the night (2400–0800), whereas there is no difference between 1000 and 1700; if anything, plasma leptin concentrations are slightly higher at 1000 (40). In accordance with previous findings (19, 41, 49), we found a decrease in circulating leptin after 8–20 h of fasting. This decrease most likely reflects a state of energy deficiency and is probably not involved in the increased insulin action we have found in the present study.

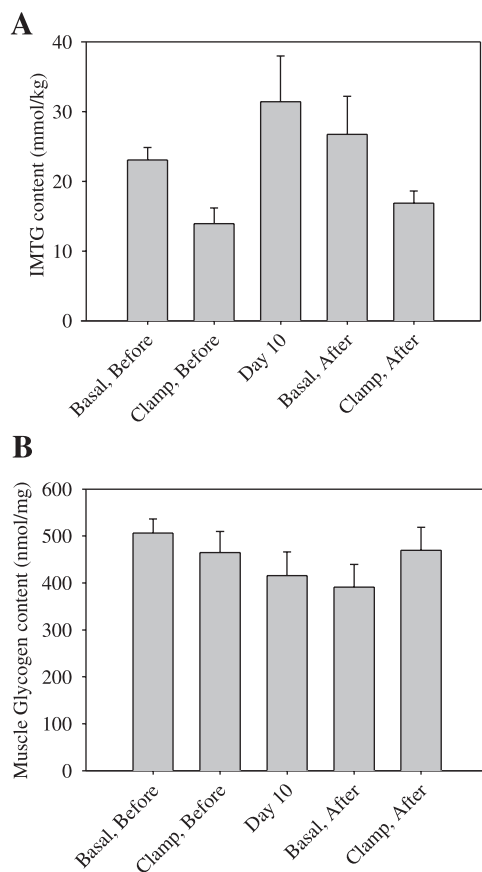


Fig. 6. Muscle content of triacylglycerol (IMTG) (A) and glycogen (B) at both basal and insulin-stimulated state before and after intermittent fasting for 15 days, as well as after 20-h fasting on *day 10*. Average concentrations of IMTG decreased ( $P = 0.04$ ) with insulin stimulation when data from both clamps are included. Data are means  $\pm$  SE.

The mechanism by which physical training increases whole body insulin sensitivity is not known in detail. It has previously been shown that in muscle the effect is mediated via local contraction dependent mechanisms (11–13), and this could include exercise-induced oscillations in local energy stores. However, the insulin-sensitizing effects of exercise and intermittent fasting may not exert their effects via the same pathway. Although the local effect of exercise is well proven (there is no transfer of training-induced increase in insulin sensitivity to nontrained muscle), it is less likely that the effect of intermittent fasting is a local, muscle phenomenon. Thus even though we were not able to detect changes in muscle glycogen and triglyceride content after 20-h fasting, the intervention may still have exerted the effects via oscillations in other energy stores (e.g., in adipose tissue or liver). The finding of decreased leptin concentrations corresponding to the intermittent fasting verifies that adipocyte metabolism was influenced by the intervention.

We did not find an effect of intermittent fasting on muscle PGC-1 $\alpha$  mRNA levels. In contrast, PGC-1 $\alpha$  mRNA increases with acute exercise (34, 47) and is suggested to be involved in the enhancement of insulin-mediated glucose uptake after exercise training (28, 39). Thus PGC-1 $\alpha$  may represent a step at which the insulin enhancement actions of exercise training and intermittent fasting diverge.

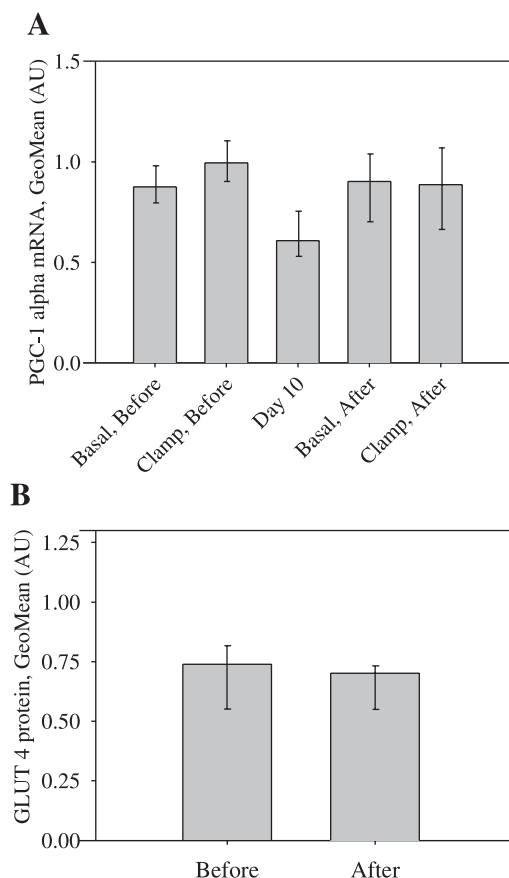


Fig. 7. Muscle content of PGC-1 $\alpha$  mRNA normalized to large ribosomal protein P0 (RPLP0; A) at both basal and insulin-stimulated state before and after intermittent fasting for 15 days, as well as after 20-h fasting on *day 10*. Muscle content of GLUT4 protein normalized to desmin (B) in the basal state before and after the intermittent fasting intervention. AU, arbitrary units. Data are geometric means  $\pm$  back-transformed SE.

Whole body insulin-mediated glucose uptake was estimated by the euglycemic hyperinsulinemic clamp technique. Even though this method is a standard for measuring insulin action, day-to-day coefficient of variation has been reported to vary between 2.4 and 15% (4, 36, 42). Part of the observed effect of

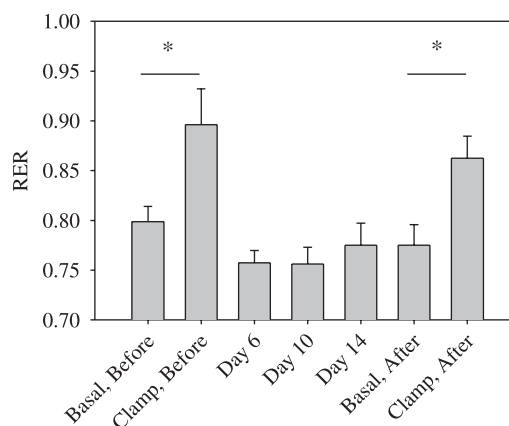


Fig. 8. Respiratory exchange rate (RER) at the basal and insulin-stimulated state before and after a period of intermittent fasting, and after 20 h of fasting on *days 6, 10, and 14*. \* $P < 0.05$  increase with insulin stimulation. Data are means  $\pm$  SE.

the intervention may therefore be due to biological and instrumental variation.

It is important to note that, in the present study, the subjects maintained their body weight throughout the intervention period, and percent body fat did not change with intermittent fasting. Thus, in contrast to previous studies using alternate-day fasting (22), the subjects in the present study kept their body weight by following the dietary instructions of eating abundantly every other day. It is well known that insulin sensitivity can be influenced by long-term profound changes of macronutrients in the diet. However, because the subjects were instructed to maintain their usual diet habits (although increasing the amount of food), it is unlikely that eventual minor changes in the macronutrient mix during 8 nonconsecutive days (i.e., the nonfasting days) would influence insulin sensitivity.

Furthermore, the increased insulin action after the intervention was not the result of the last fasting period because from the last fasting period until the beginning of the overnight fast the subjects were allowed to eat for 30 h during which they consumed at least 250 g of carbohydrates. Muscle glycogen was not different between the pre- and postintervention clamps, testifying that carbohydrate loading was sufficient before each clamp experiment.

In keeping with previous findings (3), we observed a decrease in IMTG with insulin stimulation. At first glance this seems counterintuitive. However, during insulin stimulation the FFA supply to the skeletal muscle decreases dramatically, and because some skeletal muscle FFA oxidation is still present (RER values of  $0.90 \pm 0.04$  before and  $0.86 \pm 0.02$  after the fasting intervention), it seems arguable that FFA is provided by the IMTG pool, which accordingly will decrease.

In conclusion, the findings that intermittent fasting increases insulin sensitivity on the whole body level as well as in adipose tissue support the view that cycles of feast and famine are important as an initiator of thrifty genes leading to improvements in metabolic function (6). We suggest that a fasting-induced increase in circulating adiponectin is at least partly responsible for this finding. The change in adiponectin, together with changes in plasma leptin with fasting, underlines the important role of the adipose tissue in recognizing the oscillation in energy stores. Finally, the data indicate that intermittent fasting and physical training may increase insulin action via different mechanisms because muscle energy stores did not change with the present fasting intervention.

#### ACKNOWLEDGMENTS

We thank Regitze Krausø, Jeppe Bach, Thomas Beck, Christina Bøg Sørensen, and Gerda Hau for expert technical assistance.

#### GRANTS

This study was funded by Fabrikant Vilhelm Pedersen og hustrus mindelæg, Danish Diabetes Association, Fonden af 1870, Direktør Jacob Madsen og hustru Olga Madsens Fond, Rigshospitalet, Hovedstadens Sygehusfællesskab (H:S), University of Copenhagen, and The Novo Nordisk Foundation.

#### REFERENCES

- Ajuwon KM and Spurlock ME. Adiponectin inhibits LPS-induced NF- $\kappa$ B activation and IL-6 production, and increases PPAR $\gamma$ 2 expression in adipocytes. *Am J Physiol Regul Integr Comp Physiol* 288: R1220–R1225, 2005.
- Anson RM, Guo Z, De CR, Iyun T, Rios M, Hagepanos A, Ingram DK, Lane MA, and Mattson MP. Intermittent fasting dissociates beneficial effects of dietary restriction on glucose metabolism and neuronal resistance to injury from calorie intake. *Proc Natl Acad Sci USA* 100: 6216–6220, 2003.
- Boden G, Lebed B, Schatz M, Homko C, and Lemieux S. Effects of acute changes of plasma free fatty acids on intramyocellular fat content and insulin resistance in healthy subjects. *Diabetes* 50: 1612–1617, 2001.
- Bokemark L, Froden A, Attvall S, Wikstrand J, and Fagerberg B. The euglycemic hyperinsulinemic clamp examination: variability and reproducibility. *Scand J Clin Lab Invest* 60: 27–36, 2000.
- Bulow J, Jelnes R, Astrup A, Madsen J, and Vilmann P. Tissue/blood partition coefficients for xenon in various adipose tissue depots in man. *Scand J Clin Lab Invest* 47: 1–3, 1987.
- Chakravarthy MV and Booth FW. Eating, exercise, and “thrifty” genotypes: connecting the dots toward an evolutionary understanding of modern chronic diseases. *J Appl Physiol* 96: 3–10, 2004.
- Chomczynski P and Sacchi N. Single-step method of RNA isolation by acid guanidinium thiocyanate-phenol-chloroform extraction. *Anal Biochem* 162: 156–159, 1987.
- Cnop M, Havel PJ, Utzschneider KM, Carr DB, Sinha MK, Boyko EJ, Retzlaff BM, Knopp RH, Brunzell JD, and Kahn SE. Relationship of adiponectin to body fat distribution, insulin sensitivity and plasma lipoproteins: evidence for independent roles of age and sex. *Diabetologia* 46: 459–469, 2003.
- Combs TP, Pajvani UB, Berg AH, Lin Y, Jelicks LA, Laplante M, Nawrocki AR, Rajala MW, Parlow AF, Cheeseboro L, Ding YY, Russell RG, Lindemann D, Hartley A, Baker GR, Obici S, Deshaies Y, Ludgate M, Rossetti L, and Scherer PE. A transgenic mouse with a deletion in the collagenous domain of adiponectin displays elevated circulating adiponectin and improved insulin sensitivity. *Endocrinology* 145: 367–383, 2004.
- Dela F. On the influence of physical training on glucose homeostasis. *Acta Physiol Scand Suppl* 635: 1–41, 1996.
- Dela F, Larsen JJ, Mikines KJ, Ploug T, Petersen LN, and Galbo H. Insulin-stimulated muscle glucose clearance in patients with NIDDM. Effects of one-legged physical training. *Diabetes* 44: 1010–1020, 1995.
- Dela F, Mikines KJ, Von LM, Secher NH, and Galbo H. Effect of training on insulin-mediated glucose uptake in human muscle. *Am J Physiol Endocrinol Metab* 263: E1134–E1143, 1992.
- Dela F, Ploug T, Handberg A, Petersen LN, Larsen JJ, Mikines KJ, and Galbo H. Physical training increases muscle GLUT4 protein and mRNA in patients with NIDDM. *Diabetes* 43: 862–865, 1994.
- Dheda K, Huggett JF, Bustin SA, Johnson MA, Rook G, and Zumla A. Validation of housekeeping genes for normalizing RNA expression in real-time PCR. *Biotechniques* 37: 112–119, 2004.
- Eaton SB, Strassman BI, Nesse RM, Neel JV, Ewald PW, Williams GC, Weder AB, Eaton SB III, Lindeberg S, Konner MJ, Mysterud I, and Cordain L. Evolutionary health promotion. *Prev Med* 34: 109–118, 2002.
- Evans RM, Barish GD, and Wang YX. PPARs and the complex journey to obesity. *Nat Med* 10: 355–361, 2004.
- Exton JH, Corbin JG, and Harper SC. Control of gluconeogenesis in liver. V. Effects of fasting, diabetes, and glucagon in lactate and endogenous metabolism in the perfused rat liver. *J Biol Chem* 247: 4996–5003, 1972.
- Frayn KN and Maycock PF. Skeletal muscle triacylglycerol in the rat: methods for sampling and measurement, and studies of biological variability. *J Lipid Res* 21: 139–144, 1980.
- Gavrila A, Chan JL, Yiannakouris N, Kontogianni M, Miller LC, Orlova C, and Mantzoros CS. Serum adiponectin levels are inversely associated with overall and central fat distribution but are not directly regulated by acute fasting or leptin administration in humans: cross-sectional and interventional studies. *J Clin Endocrinol Metab* 88: 4823–4831, 2003.
- Gavrila A, Peng CK, Chan JL, Mietus JE, Goldberger AL, and Mantzoros CS. Diurnal and ultradian dynamics of serum adiponectin in healthy men: comparison with leptin, circulating soluble leptin receptor, and cortisol patterns. *J Clin Endocrinol Metab* 88: 2838–2843, 2003.
- Halleux CM, Takahashi M, Delporte ML, Detry R, Funahashi T, Matsuzawa Y, and Brichard SM. Secretion of adiponectin and regulation of apM1 gene expression in human visceral adipose tissue. *Biochem Biophys Res Commun* 288: 1102–1107, 2001.



22. Heilbronn LK, Smith SR, Martin CK, Anton SD, and Ravussin E. Alternate-day fasting in nonobese subjects: effects on body weight, body composition, and energy metabolism. *Am J Clin Nutr* 81: 69–73, 2005.
23. Higashiura K, Ura N, Ohata J, Togashi N, Takagi S, Saitoh S, Murakami H, Takagawa Y, and Shimamoto K. Correlations of adiponectin level with insulin resistance and atherosclerosis in Japanese male populations. *Clin Endocrinol (Oxf)* 61: 753–759, 2004.
24. Holmes B and Dohm GL. Regulation of GLUT4 gene expression during exercise. *Med Sci Sports Exerc* 36: 1202–1206, 2004.
25. Karlsson J, Diamant B, and Saltin B. Muscle metabolites during submaximal and maximal exercise in man. *Scand J Clin Lab Invest* 26: 385–394, 1970.
26. Larsen OA, Lassen NA, and Quaade F. Blood flow through human adipose tissue determined with radioactive xenon. *Acta Physiol Scand* 66: 337–345, 1966.
27. Leff T. AMP-activated protein kinase regulates gene expression by direct phosphorylation of nuclear proteins. *Biochem Soc Trans* 31: 224–227, 2003.
28. McCarty MF. Up-regulation of PPARgamma coactivator-1alpha as a strategy for preventing and reversing insulin resistance and obesity. *Med Hypotheses* 64: 399–407, 2005.
29. Murakami H, Ura N, Furuhashi M, Higashiura K, Miura T, and Shimamoto K. Role of adiponectin in insulin-resistant hypertension and atherosclerosis. *Hypertens Res* 26: 705–710, 2003.
30. Neel JV. Diabetes mellitus: a “thrifty” genotype rendered detrimental by “progress”? *Am J Hum Genet* 14: 353–362, 1962.
31. Olsen C. An enzymatic fluorimetric micromethod for the determination of acetoacetate, -hydroxybutyrate, pyruvate and lactate. *Clin Chim Acta* 33: 293–300, 1971.
32. Pedersen CR, Hagemann I, Bock T, and Buschard K. Intermittent feeding and fasting reduces diabetes incidence in BB rats. *Autoimmunity* 30: 243–250, 1999.
33. Peters SJ, Dyck DJ, Bonen A, and Spriet LL. Effects of epinephrine on lipid metabolism in resting skeletal muscle. *Am J Physiol Endocrinol Metab* 275: E300–E309, 1998.
34. Pilegaard H, Saltin B, and Neufer PD. Exercise induces transient transcriptional activation of the PGC-1alpha gene in human skeletal muscle. *J Physiol* 546: 851–858, 2003.
35. Ploug T, Stallknecht BM, Pedersen O, Kahn BB, Ohkuwa T, Vinten J, and Galbo H. Effect of endurance training on glucose transport capacity and glucose transporter expression in rat skeletal muscle. *Am J Physiol Endocrinol Metab* 259: E778–E786, 1990.
36. Scheen AJ, Paquot N, Castillo MJ, and Lefebvre PJ. How to measure insulin action in vivo. *Diabetes Metab Rev* 10: 151–188, 1994.
37. Scheller D and Kolb J. The internal reference technique in microdialysis: a practical approach to monitoring dialysis efficiency and to calculating tissue concentration from dialysate samples. *J Neurosci Methods* 40: 31–38, 1991.
38. Shklyaev S, Aslanidi G, Tennant M, Prima V, Kohlbrenner E, Kroustov V, Campbell-Thompson M, Crawford J, Shek EW, Scarpace PJ, and Zolotukhin S. Sustained peripheral expression of transgene adiponectin offsets the development of diet-induced obesity in rats. *Proc Natl Acad Sci USA* 100: 14217–14222, 2003.
39. Short KR, Vittone JL, Bigelow ML, Proctor DN, Rizza RA, Coenen-Schimke JM, and Nair KS. Impact of aerobic exercise training on age-related changes in insulin sensitivity and muscle oxidative capacity. *Diabetes* 52: 1888–1896, 2003.
40. Sinha MK, Ohannesian JP, Heiman ML, Kriauciunas A, Stephens TW, Magosin S, Marco C, and Caro JF. Nocturnal rise of leptin in lean, obese, and noninsulin-dependent diabetes mellitus subjects. *J Clin Invest* 97: 1344–1347, 1996.
41. Sinha MK, Opentanova I, Ohannesian JP, Kolaczynski JW, Heiman ML, Hale J, Becker GW, Bowsher RR, Stephens TW, and Caro JF. Evidence of free and bound leptin in human circulation. Studies in lean and obese subjects and during short-term fasting. *J Clin Invest* 98: 1277–1282, 1996.
42. Soop M, Nygren J, Brismar K, Thorell A, and Ljungqvist O. The hyperinsulinaemic-euglycaemic glucose clamp: reproducibility and metabolic effects of prolonged insulin infusion in healthy subjects. *Clin Sci (Lond)* 98: 367–374, 2000.
43. Staiger H, Tschritter O, Kausch C, Lammers R, Stumvoll M, and Haring HU. Human serum adiponectin levels are not under short-term negative control by free fatty acids in vivo. *Horm Metab Res* 34: 601–603, 2002.
44. Stallknecht B, Simonsen L, Bulow J, Vinten J, and Galbo H. Effect of training on epinephrine-stimulated lipolysis determined by microdialysis in human adipose tissue. *Am J Physiol Endocrinol Metab* 269: E1059–E1066, 1995.
45. Stannard SR and Johnson NA. Insulin resistance and elevated triglyceride in muscle: more important for survival than “thrifty” genes? *J Physiol* 554: 595–607, 2004.
46. Stannard SR, Thompson MW, Fairbairn K, Huard B, Sachinwalla T, and Thompson CH. Fasting for 72 h increases intramyocellular lipid content in nondiabetic, physically fit men. *Am J Physiol Endocrinol Metab* 283: E1185–E1191, 2002.
47. Vissing K, Andersen JL, and Schjerling P. Are exercise-induced genes induced by exercise? *FASEB J* 19: 94–96, 2005.
48. Yamauchi T, Kamon J, Waki H, Terauchi Y, Kubota N, Hara K, Mori Y, Ide T, Murakami K, Tsuboyama-Kasaoka N, Ezaki O, Akanuma Y, Gavrilova O, Vinson C, Reitman ML, Kagechika H, Shudo K, Yoda M, Nakano Y, Tobe K, Nagai R, Kimura S, Tomita M, Froguel P, and Kadowaki T. The fat-derived hormone adiponectin reverses insulin resistance associated with both lipoatrophy and obesity. *Nat Med* 7: 941–946, 2001.
49. Zhang Y, Matheny M, Zolotukhin S, Tumer N, and Scarpace PJ. Regulation of adiponectin and leptin gene expression in white and brown adipose tissues: influence of beta3-adrenergic agonists, retinoic acid, leptin and fasting. *Biochim Biophys Acta* 1584: 115–122, 2002.