

# The endocannabinoid system is dysregulated in multiple sclerosis and in experimental autoimmune encephalomyelitis

Diego Centonze,<sup>1,2</sup> Monica Bari,<sup>3</sup> Silvia Rossi,<sup>1,2</sup> Chiara Prosperetti,<sup>1,2</sup> Roberto Furlan,<sup>4</sup> Filomena Fezza,<sup>2,3</sup> Valentina De Chiara,<sup>1,2</sup> Luca Battistini,<sup>2</sup> Giorgio Bernardi,<sup>1,2</sup> Sergio Bernardini,<sup>2,5</sup> Gianvito Martino<sup>4</sup> and Mauro Maccarrone<sup>2,6</sup>

<sup>1</sup>Clinica Neurologica, Dipartimento di Neuroscienze, Università Tor Vergata, Rome, Italy, <sup>2</sup>Centro Europeo per la Ricerca sul Cervello (CERC)/Fondazione Santa Lucia, Rome, Italy, <sup>3</sup>Dipartimento di Medicina Sperimentale e Scienze Biochimiche, Università Tor Vergata, Rome, Italy, <sup>4</sup>Neuroimmunology Unit, DIBIT, San Raffaele Scientific Institute, Milan, Italy, <sup>5</sup>Dipartimento di Medicina Interna, Medicina di Laboratorio, Università Tor Vergata, Rome, Italy and <sup>6</sup>Dipartimento di Scienze Biomediche, Università degli Studi di Teramo, Teramo, Italy

Correspondence to: Diego Centonze, Clinica Neurologica, Dipartimento di Neuroscienze, Università Tor Vergata, Via Montpellier I, 00133 Rome, Italy

E-mail: centonze@uniroma2.it

Mauro Maccarrone, Dipartimento di Scienze Biomediche, Università degli Studi di Teramo, Piazza A. Moro 45, 64100 Teramo, Italy

E-mail: mmaccarrone@unite.it

**The ability of cannabinoids to modulate both inflammatory and degenerative neuronal damage prompted investigations on the potential benefits of such compounds in multiple sclerosis (MS) and in animal models of this disorder. Here we measured endocannabinoid levels, metabolism and binding, and physiological activities in 26 patients with MS (17 females, aged 19–43 years), 25 healthy controls and in mice with experimental autoimmune encephalomyelitis (EAE), a preclinical model of MS. Our results show that MS and EAE are associated with significant alterations of the endocannabinoid system. We found that anandamide (AEA), but not 2-arachidonoylglycerol (2-AG), was increased in the CSF of relapsing MS patients. AEA concentrations were also higher in peripheral lymphocytes of these patients, an effect associated with increased synthesis and reduced degradation of this endocannabinoid. Increased synthesis, reduced degradation, and increased levels of AEA were also detected in the brains of EAE mice in the acute phase of the disease, possibly accounting for its anti-excitotoxic action in this disorder. Accordingly, neurophysiological recordings from single neurons confirmed that excitatory transmission in EAE slices is inhibited by CBI receptor activation, while inhibitory transmission is not. Our study suggests that targeting the endocannabinoid system might be useful for the treatment of MS.**

**Keywords:** animal models; arachidonic acid; autoimmune encephalitis; excitotoxicity; neuroprotective agents

**Abbreviations:** AEA = anandamide; 2-AG = 2-arachidonoylglycerol; CB = cannabinoid; CSF = cerebrospinal fluid; EAE = experimental autoimmune encephalomyelitis; ECS = endocannabinoid system; EPSC = excitatory postsynaptic current; FAAH = fatty acid amide hydrolase; HP = holding potential; IPSC = inhibitory postsynaptic current; MS = multiple sclerosis; NAPE-PLD = *N*-acyl-phosphatidylethanolamines (NAPE)-hydrolysing phospholipase D; PPR = paired pulse ratio

Received December 22, 2006. Revised May 10, 2007. Accepted June 14, 2007. Advance Access publication July 11, 2007

## Introduction

Immune-mediated attack of oligodendrocytes and myelin sheaths is a primary pathological event in multiple sclerosis (MS). Neurodegenerative damage, however, occurs early in this disorder, paralleling inflammation (Bjartmar *et al.*, 2001; Peterson *et al.*, 2001; De Stefano *et al.*, 2002; Kuhlmann *et al.*, 2002; Filippi *et al.*, 2003; Filippi and

Rocca, 2005). In recent years, the ability of cannabinoids to modulate both inflammatory (Baker *et al.*, 2003; Walter and Stella, 2004), and degenerative neuronal damage (Grundy *et al.*, 2001; Iversen, 2003) prompted investigations of the potential benefits of these compounds in MS, also encouraged by early reports affirming reduced frequency of relapses (Consroe *et al.*, 1997), and relief from spasticity,

dystonia, tremor, ataxia, bladder dysfunction and pain in MS patients self-medicating with marijuana (Consroe, 1998; Fernandez-Ruiz *et al.*, 2002; Pertwee, 2002; Zajicek *et al.*, 2003).

In experimental animal models of MS, cannabinoid administration significantly attenuates the clinical and pathological features of the disease (Lyman *et al.*, 1989; Wirguin *et al.*, 1994; Arevalo-Martin *et al.*, 2003; Croxford and Miller, 2003), an effect also achieved by pharmacological interventions aimed at enhancing the levels of the endogenous cannabinoid anandamide (AEA) (Mestre *et al.*, 2005; Ortega-Gutierrez *et al.*, 2005; Bari *et al.*, 2006; Ligresti *et al.*, 2006). Furthermore, mice lacking the CB1 receptor develop more severe neuronal damage following experimental autoimmune encephalomyelitis (EAE) induction, supporting a role for endocannabinoids in this inflammatory neurodegeneration (Pryce *et al.*, 2003).

Whether MS or experimental models of MS perturb the endocannabinoid system (ECS) is however controversial. Recently, increased levels of AEA, but not of the other abundant endocannabinoid 2-arachidonoylglycerol (2-AG), have been reported in tissues from inflammatory lesions of patients with MS (Eljaschewitsch *et al.*, 2006). Another study, however, showed that the expression of the enzyme involved in AEA degradation was upregulated in MS lesions, indicating that the level of this endocannabinoid might be reduced in MS patients (Benito *et al.*, 2007).

Furthermore, it has been reported that production of both AEA and 2-AG was normal in mice with asymptomatic to mild EAE (Shohami and Mechoulam, 2006; Witting *et al.*, 2006), while both endocannabinoids were elevated in the chronic relapsing mouse model of MS (Baker *et al.*, 2001). Finally, both AEA and 2-AG have been found to be down-regulated in the brains of rats with EAE (Cabrane *et al.*, 2005). Decreased expression of CB1 receptors has also been reported in this rat model of MS (Berrendero *et al.*, 2001), while the functionality of the same receptors seem to remain unchanged in mice with asymptomatic to mild EAE (Pertwee, 2002; Witting *et al.*, 2006).

Thus, to increase our understanding of possible changes in ECS in MS, we measured endocannabinoid levels, metabolism and binding, and physiological activities in patients with MS and in mice with EAE. Our results indicate a profound rearrangement of the ECS involving AEA and the sensitivity of striatal cannabinoid CB1 receptors.

## Subjects and Methods

The study was approved by the Ethics Committee of the University of Rome Tor Vergata.

### MS patients

We collected peripheral blood and/or CSF from 26 patients suffering from relapsing–remitting MS (17 females and 9 males, aged 19–43 years), who were admitted to the neurological clinic of

the University of Rome Tor Vergata for a relapse of the disease. These patients were suffering from a new symptom or a recrudescence of an old one, since at least two days. At the moment of blood and/or CSF withdrawal, patients were free of corticosteroids and MS-specific immunoactive therapies. The diagnosis of relapsing–remitting MS was established by clinical, laboratory and MRI parameters, and matched published criteria (McDonald *et al.*, 2001). In all instances, patients underwent detection of oligoclonal banding in the CSF, and brain and/or spinal cord MRI. Expanded Disability Status Scale (EDSS) scores were between 0.5 and 3.

As controls, we used peripheral blood from 25 age- and gender-matched healthy volunteers (15 females and 10 males, aged 22–41 years), and CSF from 11 subjects (7 females and 4 males, aged 22–47 years) without inflammatory or degenerative diseases of the central or peripheral nervous system. These subjects underwent lumbar puncture because of clinical suspect of acute peripheral neuropathy, meningitis or subarachnoidal haemorrhage. All the subjects gave their written informed consent to the study.

### MRI acquisition and analysis

Three Tesla MRI examination during the disease relapse consisted of dual-echo proton density, FLAIR, T2-weighted spin-echo images and pre-contrast and post-contrast T1-weighted spin-echo images. All images were acquired in the axial orientation with 3-mm thick contiguous slices. T2 lesion volume was determined by manual tracing and the number of gadolinium (0.2 ml/kg e.v.)-enhancing lesions was counted by a neuroradiologist who was unaware of the patient's clinical details.

Correlation with endocannabinoid levels was estimated by regression analysis in Prism 3.0 (Graphpad Software Inc., San Diego, CA) and was inspected visually using scatter plots to determine linearity.

### EAE mice

As described (Pluchino *et al.*, 2003), chronic, relapsing EAE was induced in C57BL/6 mice by subcutaneous immunization with 300 µl of 200 µg MOG(35–55) (Multiple Peptide System) in incomplete Freund's adjuvant containing 8 mg/ml *Mycobacterium tuberculosis* (strain H37Ra; Difco). Pertussis toxin (Sigma) (500 ng) was injected on the day of the immunization and again 2 days later. Body weight and clinical score (0 = healthy; 1 = limp tail; 2 = ataxia and/or paresis of hindlimbs; 3 = paralysis of hindlimbs and/or paresis of forelimbs; 4 = tetraparalysis; 5 = moribund or death) were recorded daily.

Mice receiving or not vehicle instead of MOG were employed as controls. Data from these two control groups gave comparable results, so that they were pooled together. All efforts were made to minimize animal suffering and to reduce the number of mice used, in accordance with the European Communities Council Directive of November 24, 1986 (86/609/EEC).

### Analysis of the endocannabinoid system

All human and mouse specimens were sent blind to the biochemistry laboratory. For the evaluation of endogenous levels of AEA or 2-AG, lipids were extracted from human CSF or lymphocytes, or from mouse striatal slices, and the organic phase was dried under nitrogen (Maccarrone *et al.*, 2005). Dry pellet was resuspended in 20 µl of methanol, and was processed and analysed

by high performance liquid chromatography with fluorimetric detection (Wang *et al.*, 2001), as reported (Maccarrone *et al.*, 2005). In the case of human lymphocytes, blood from 9 control and 9 MS donors (25 ml each) was pooled in three aliquots (3 donors/aliquot), that were used to extract and quantify AEA.

The hydrolysis of [<sup>3</sup>H]AEA by fatty acid amide hydrolase (E.C. 3.5.1.4; FAAH) was assayed in cell or brain homogenates (10 µg/test), incubated at pH 9.0 with 5 µM [<sup>3</sup>H]AEA. The release of [<sup>3</sup>H]arachidonic acid from [<sup>3</sup>H]AEA was evaluated through reversed phase-high performance liquid chromatography (RP-HPLC), as already reported (Maccarrone *et al.*, 2003). FAAH activity was expressed as pmol [<sup>3</sup>H]arachidonic acid released per min per mg protein. FAAH expression was determined in lymphocyte extracts by enzyme-linked immunosorbent assay (ELISA), using anti-FAAH polyclonal antibodies (1:250) and GAR-AP (diluted 1:2000), as reported (Maccarrone *et al.*, 2003). Wells were coated with cell extracts (20 µg/well), and the absorbance values at 405 nm of unknown samples were within the linearity range of calibration curves drawn with different amounts of extracts (in the range 0–40 µg/well).

The synthesis of AEA through the activity of *N*-acyl-phosphatidylethanolamines (NAPE)-hydrolysing phospholipase D (E.C. 3.1.4.4; NAPE-PLD) was assayed in cell or brain homogenates (100 µg/test), using 100 µM [<sup>3</sup>H]NArPE as reported (Fezza *et al.*, 2005). NAPE-PLD activity was expressed as pmol [<sup>3</sup>H]AEA released per min per mg protein.

For cannabinoid receptor studies, membrane fractions were prepared from human lymphocytes or mouse brain areas as reported (Maccarrone *et al.*, 2005), and were stored at –80°C for no longer than 1 week. Membrane fractions were used in rapid filtration assays with the synthetic cannabinoid [<sup>3</sup>H]CP55.940 (400 pM), as described (Gubellini *et al.*, 2002; Maccarrone *et al.*, 2005). The concentration of 400 pM [<sup>3</sup>H]CP55.940 was chosen on the basis of previous data obtained in similar experimental conditions to avoid saturating effects (Gubellini *et al.*, 2002). In all binding experiments, non-specific binding was determined in the presence of 1 µM 'cold' agonist (Maccarrone *et al.*, 2005).

Chemicals used in all biochemical assays were of the purest analytical grade. Anandamide (*N*-arachidonylethanolamine, AEA), and 5-(1,1'-dimethylheptyl)-2-[1R,5R-hydroxy-2R-(3-hydroxypropyl)cyclohexyl]-phenol (CP55.940) were purchased from Sigma Chemical Co. (St Louis, MO, USA). *N*-arachidonylethanolamine (NArPE) was synthesized from arachidonic acid and phosphatidylethanolamine, as reported (Fezza *et al.*, 2005). [<sup>3</sup>H]AEA (205 Ci/mmol), and [<sup>3</sup>H]CP55.940 (126 Ci/mmol) were from Perkin–Elmer Life Sciences, Inc. (Boston, MA, USA). [<sup>3</sup>H]NArPE (200 Ci/mmol) was from ARC (St Louis, MO, USA). Anti-FAAH polyclonal antibodies were prepared by Primm S.r.l. (Milan, Italy) as reported (Maccarrone *et al.*, 2003). Goat anti-rabbit antibodies conjugated to alkaline phosphatase (GAR-AP) were from Bio-Rad (Hercules, CA, USA). *N*-piperidino-5-(4-chlorophenyl)-1-(2,4-dichloro-phenyl)-4-methyl-3-pyrazole carboxamide (SR141716A) and *N*-[(1S)-endo-1,3,3-trimethyl-1-bicyclo [2.2.1]-heptan-2-yl]5-(4-chloro-3-methylphenyl)-1-(4-methyl-benzyl)-pyrazole-3-carboxamide (SR144528) were a kind gift of Sanofi-Aventis Recherche (Montpellier, France). Biochemical data reported in this paper are the means ± SD of at least three independent experiments, each performed in duplicate. Statistical analysis was performed by the non-parametric Mann–Whitney U test, elaborating experimental

data by means of the InStat 3 program (GraphPAD Software for Science, San Diego, CA).

### Electrophysiology on EAE mice

Corticostratial coronal slices (200 µm) were prepared from tissue blocks of the mouse brain with the use of a vibratome (Centonze *et al.*, 2005). A single slice was then transferred to a recording chamber and submerged in a continuously flowing artificial cerebrospinal fluid (ACSF) (33°C, 2–3 ml/min) gassed with 95% O<sub>2</sub>–5% CO<sub>2</sub>. The composition of the control solution was (in mM): 126 NaCl, 2.5 KCl, 1.2 MgCl<sub>2</sub>, 1.2 NaH<sub>2</sub>PO<sub>4</sub>, 2.4 CaCl<sub>2</sub>, 11 glucose, 25 NaHCO<sub>3</sub>.

In both control and EAE brains, the striatum could be readily identified under low power magnification, whereas individual neurons were visualized in situ using a differential interference contrast (Nomarski) optical system. This employed an Olympus BX50WI (Japan) non-inverted microscope with ×40 water immersion objective combined with an infra-red filter, a monochrome CCD camera (COHU 4912), and a PC compatible system for analysis of images and contrast enhancement (WinVision 2000, Delta Sistemi, Italy). Recording pipettes were advanced towards individual striatal cells in the slice under positive pressure and, on contact, tight GΩ seals were made by applying negative pressure. The membrane patch was then ruptured by suction and membrane current and potential monitored using an Axopatch 1D patch clamp amplifier (Axon Instruments, Foster City, CA, USA). Whole-cell access resistances measured in voltage clamp were in the range of 5–20 MΩ.

Whole-cell patch clamp recordings were made with borosilicate glass pipettes (1.8 mm o.d.; 3–5 MΩ), in voltage-clamp mode, at the holding potential (HP) of –80 mV. To study evoked glutamate-mediated excitatory post-synaptic currents (EPSCs), the recording pipettes were filled with internal solution of the following composition (mM): K<sup>+</sup>-gluconate (125), NaCl (10), CaCl<sub>2</sub> (1.0), MgCl<sub>2</sub> (2.0), 1,2-*bis* (2-aminophenoxy) ethane-*N,N,N,N*-tetraacetic acid (BAPTA; 0.5), *N*-(2-hydroxyethyl)-piperazine-*N*-s-ethanesulfonic acid (HEPES; 19), guanosine triphosphate (GTP; 0.3), Mg-adenosine triphosphate (Mg-ATP; 1.0), adjusted to pH 7.3 with KOH. Bicuculline (10 µM) was added to the perfusing solution to block GABAA-mediated transmission. Conversely, to detect evoked GABAA-mediated inhibitory post-synaptic currents (IPSCs), intracellular solution had the following composition (mM): CsCl (110), K<sup>+</sup>-gluconate (30), ethylene glycol-*bis* (β-aminoethyl ether)-*N,N,N',N'*-tetraacetic acid (EGTA; 1.1), HEPES (10), CaCl<sub>2</sub> (0.1), Mg-ATP (4), Na-GTP (0.3). MK-801 (30 µM) and CNQX (10 µM) were added to the external solution to block, respectively, NMDA and non-NMDA glutamate receptors. For synaptic stimulation, bipolar electrodes were placed on corticostratial fibres to study EPSCs, and within the striatum to elicit IPSCs. EPSCs and IPSCs were induced at the frequency of 0.1 Hz, while pulse interval was 50 ms (for EPSCs) or 70 ms (for IPSCs) for the experiments on PPR. The electrophysiological traces were stored on P-CLAMP 9 (Axon Instruments) and analysed off-line on a personal computer.

Three to seven cells per animal were recorded. For each type of experiment at least four distinct animals were employed. Throughout the text 'n' refers to the number of cells, unless otherwise specified. For data presented as the mean ± SEM, statistical analysis was performed using a paired or unpaired

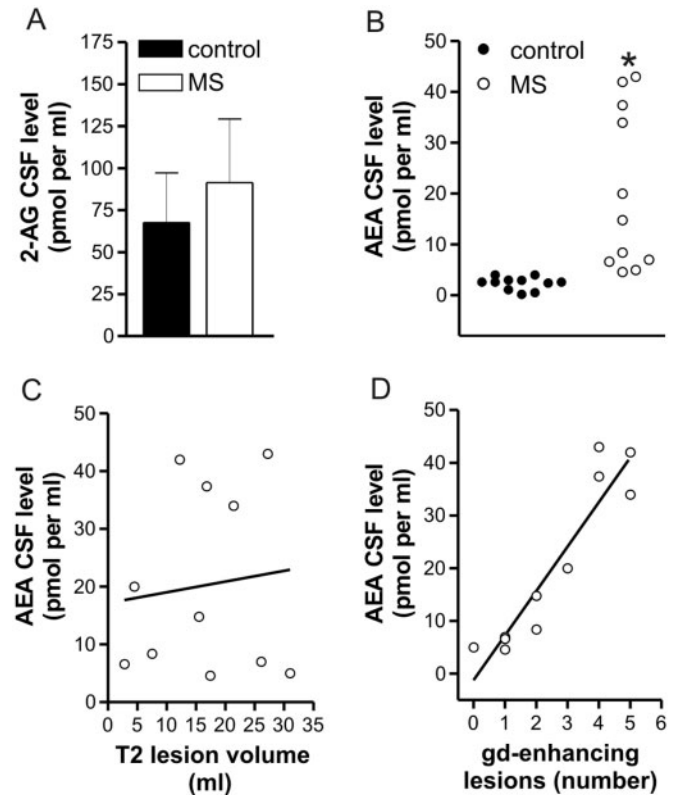
Student's *t*-test or Wilcoxon's test. The significance level was established at  $P < 0.05$ .

Drugs were applied by dissolving them to the desired final concentration in the bathing ACSF. Drugs were: CNQX (10  $\mu$ M), HU210 (0.3, 1  $\mu$ M), MK-801 (30  $\mu$ M), (from Tocris Cookson, Bristol, UK); bicuculline (10  $\mu$ M) (from Sigma-RBI, St Louis, USA); SR141716A (1  $\mu$ M) (from Sanofi-Aventis Recherche, Montpellier, France).

## Results

To explore the ECS system in MS, we first evaluated the levels of the two endocannabinoids AEA and 2-AG in the CSF of our patients. We found a 6-fold increase of AEA in these subjects (control:  $2.4 \pm 1.3$  pmol/ml; MS:  $20.3 \pm 15.7$  pmol/ml) ( $n = 11$  for both groups,  $P < 0.001$ ) while 2-AG concentration was normal ( $n = 5$ ,  $P > 0.05$ ). Notably, AEA levels were particularly high in those subjects showing contrast-enhancement lesions at the MRI following standard dose (0.2 ml/kg e.v.) of gadolinium ( $n = 11$ ,  $R^2 = 0.87$ ,  $P < 0.0001$ ). In contrast, lack of correlation with T2 lesion volume was noted ( $n = 11$ ,  $R^2 = 0.01$ ,  $P = 0.74$ ) (Fig. 1).

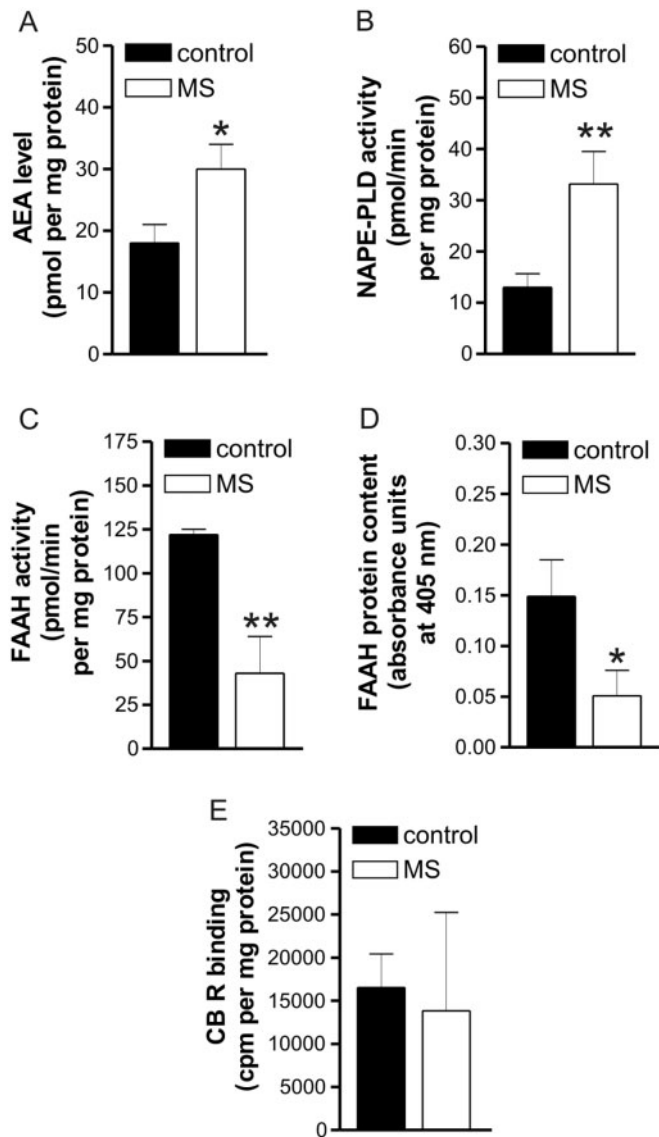
A significant increase of AEA content was also found in peripheral lymphocytes of MS patients ( $n = 3$ ,  $P < 0.001$ ). *N*-acylphosphatidylethanolamine (NAPE)-specific phospholipase D (NAPE-PLD) is considered a major player in the synthesis of AEA (Okamoto *et al.*, 2004), although NAPE-PLD knockout mice do not have altered levels of this endocannabinoid (Leung *et al.*, 2006), possibly due to additional biosynthetic pathways that have been recently identified and await further characterization (Liu *et al.*, 2006). AEA is conversely degraded by the fatty acid amide hydrolase (FAAH) (Cravatt *et al.*, 2001; Maccarrone, 2006). Thus, to see whether the observed increase of AEA was mediated by increased synthesis and/or reduced degradation of this endocannabinoid, we measured the activity of NAPE-PLD and that of FAAH in lymphocytes from the peripheral blood of MS patients. We found that NAPE-PLD activity was increased in MS patients ( $n = 6$ ,  $P < 0.0001$ ), while both FAAH activity ( $n = 17$ ,  $P < 0.0001$ ) and FAAH protein content ( $n = 5$ ,  $P < 0.001$ ) were reduced compared to healthy controls. In peripheral lymphocytes, the binding of CB receptors was conversely normal ( $n = 16$ ,  $P > 0.05$ ) (Fig. 2). Incidentally, it should be stressed that AEA levels in peripheral lymphocytes are in the same picomole range as AEA content in human blood (Monteleone *et al.*, 2005), and that FAAH activity and CB receptor binding in healthy subjects corroborate previous data on a large collection of control human lymphocytes (Maccarrone *et al.*, 2001), as does the level of AEA in healthy CSF (Pisani *et al.*, 2005). Furthermore, mammalian immune cells express both CB1 and CB2 receptors (Klein, 2005), and CP55.940 binds both of them (Pertwee, 2002). In human lymphocytes, we found that  $\sim 40\%$  of bound [ $^3$ H]CP55.940 (400 pM) was displaced by 1  $\mu$ M SR141716A, a CB1 antagonist (Pertwee, 2002),



**Fig. 1** Endocannabinoid levels in the CSF of control and MS subjects. **(A)** Endogenous levels of 2-AG were unchanged in the CSF of MS patients. **(B)** This scatter plot shows that endogenous levels of AEA were increased in the CSF of MS patients. **(C)** The correlation plot shows that AEA levels in MS patients were not related with lesion volume calculated in MRI T2 scans;  $R^2 = 0.01$ ,  $P = 0.74$ . **(D)** The correlation plot shows that AEA levels in MS patients were strongly correlated with the number of active lesions;  $R^2 = 0.87$ ,  $P < 0.0001$ . \* $P < 0.001$ .

whereas 1  $\mu$ M SR144528, an antagonist of CB2 receptors (Pertwee, 2002), displaced it by  $\sim 60\%$  (data not shown). Therefore, it can be concluded that human peripheral lymphocytes express both receptor subtypes to a comparable extent.

Higher concentrations of AEA ( $n = 3$  mice,  $P < 0.001$ ), coupled with increased activity of NAPE-PLD ( $n = 4$  mice,  $P < 0.0001$ ) and reduced activity of FAAH ( $n = 5$  mice,  $P < 0.001$ ), were also observed in the striatum of EAE mice killed 20 to 25 days after EAE induction, at the peak of their neurological deficits (mean clinical score: 2.8). The activity of NAPE-PLD and that of FAAH were conversely normal in the frontal cortex of these mice (Fig. 3). The observed increase in AEA levels extends previous findings on chronic relapsing experimental allergic encephalomyelitis (CREAE) mice, another animal model of MS (Baker *et al.*, 2001). Instead, decreased endocannabinoid levels were reported in the brain of Lewis rats with EAE (Cabrane *et al.*, 2005), suggestive that the animal model of MS (mouse *versus* rat) might lead to heterogeneity of ECS alterations observed in previous studies. In this context,



**Fig. 2** Endocannabinoid metabolism in peripheral lymphocytes of control and MS subjects. **(A)** AEA levels were increased in peripheral lymphocytes of MS patients. **(B)** The activity of NAPE-PLD, key enzyme in the AEA synthesis, was increased in MS patients. The activity **(C)** and protein expression **(D)** of the AEA degrading enzyme FAAH were reduced in these patients. **(E)** The binding of CB receptors was conversely unaltered in peripheral lymphocytes of MS patients. \* $P < 0.001$ ; \*\* $P < 0.0001$ .

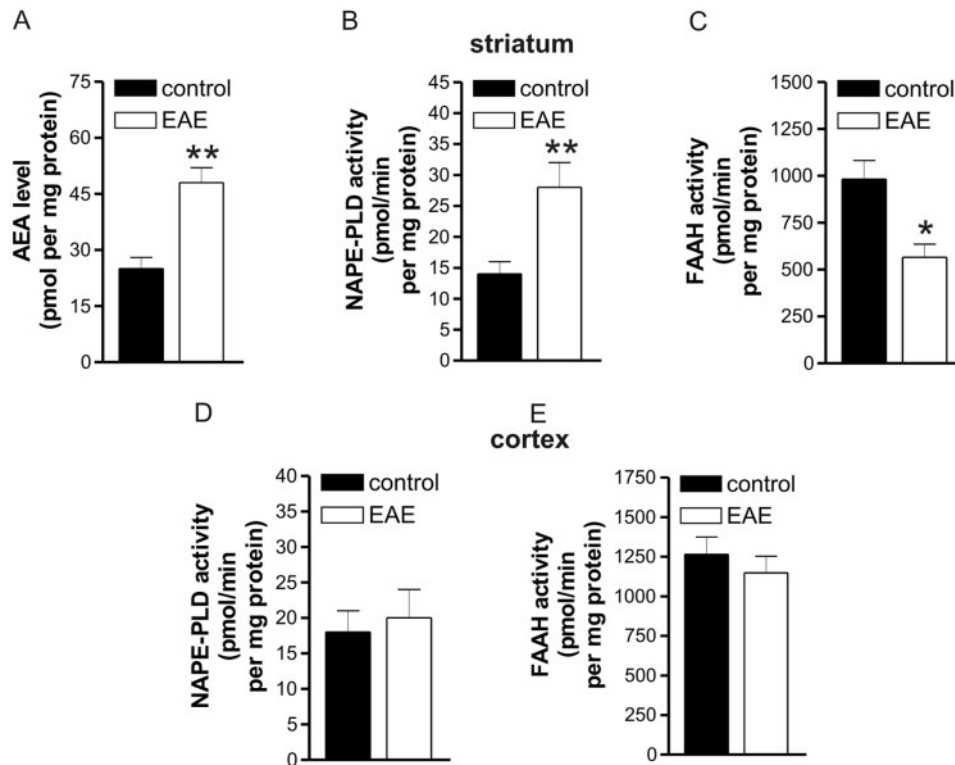
it should be stressed that the ECS is well regulated and sensitive, and there is the possibility that a number of factors like soluble mediators of inflammation can influence ECS directly or indirectly. Therefore, it is imperative that all experimental conditions are strictly controlled and kept identical, when handling control and EAE mice, in order to minimize possible pitfalls due to differences in the phase of the disorder, or in its association with inflammation. Incidentally, the picomole amounts of AEA found here corroborate previous data in rat striatum (Di Marzo *et al.*, 2000) and mouse brain (Baker *et al.*, 2001).

In EAE mice, we also performed electrophysiological recordings from single neurons to explore the functionality of neuronal ECS. We selected the nucleus striatum for our neurophysiological investigations, since this subcortical area contains among the highest contents of cannabinoid CB1 receptors in the brain (Piomelli, 2003), and it is particularly vulnerable to the neurodegenerative process associated to MS (Bakshi *et al.*, 2002; Bermel *et al.*, 2003).

In the striatum, stimulation of CB1 receptors modulates both excitatory (Gerdeman and Lovinger, 2001; Huang *et al.*, 2001; Gubellini *et al.*, 2002; Centonze *et al.*, 2005) and inhibitory synaptic transmission through a presynaptic action (Szabo *et al.*, 1998; Centonze *et al.*, 2004, 2005). To record glutamate-mediated EPSCs, we performed whole-cell recordings with potassium-based pipettes. At  $-80$  mV HP and in the presence of bicuculline, EPSCs could be detected in striatal neurons following the activation of corticostriatal fibres. Application of the CB1 receptor agonist HU210 dose-dependently reduced EPSCs in control slices (10 min,  $n = 10$  and  $P < 0.05$  compared to pre-drug values for both 0.3 and  $1 \mu\text{M}$  HU210). In striatal neurons from EAE mice, the effects of HU210 were still present and remarkably similar to those recorded in the respective controls (10 min,  $n = 10$  and  $P < 0.05$  for both concentrations). In both experimental groups, the depressant action of HU210 was associated with increased PPR, as expected for a presynaptic action of this compound. Furthermore, pre-incubating the slices with the selective antagonist of CB1 receptors SR141716A failed to change the amplitude of EPSCs, but fully prevented the HU210 effects in both control and EAE mice (for both groups:  $n = 4$  and  $P > 0.05$  for SR141716A and  $1 \mu\text{M}$  HU210) (Fig. 4).

We also investigated the sensitivity of GABA synapses to HU210. Following intrastriatal stimulation, GABA-mediated IPSCs were recorded, in the presence of MK-801 plus CNQX, in both control and EAE mice. These currents were fully blocked by the GABA<sub>A</sub> receptor antagonist bicuculline ( $n = 5$  for both groups) and were detected as inward deflections from the baseline. Application of the cannabinoid CB1 receptor agonist HU210 (10 min,  $n = 8$  for both groups and 0.3 and  $1 \mu\text{M}$  HU210) significantly ( $P < 0.05$ ) reduced IPSCs in control slices, an effect again associated with increased PPR and prevented by SR141716A, which caused, *per se*, no effect of basal EPSC amplitude in both groups ( $n = 5$  and  $P > 0.05$  for SR141716A and  $1 \mu\text{M}$  HU210). In striatal neurons from EAE mice, HU210 was ineffective (10 min application,  $n = 10$  and  $P > 0.05$  for both concentrations compared to pre-drug values), indicating the loss of CB1-mediated control of GABA transmission in these mice (Fig. 5).

To further explore the possible rearrangements of cannabinoid receptor expression and function in EAE, we measured the binding of the CB1 receptor agonist [ $^3\text{H}$ ]CP55,940 to striatal and cortical membranes from EAE and control mice. We found that the binding properties of CB1 receptors were markedly decreased in



**Fig. 3** Endocannabinoid metabolism in striatal and cortical slices of control and EAE mice. **(A)** Endogenous levels of AEA were increased in the striatum of EAE mice. NAPE-PLD activity was increased **(B)** and FAAH activity was reduced in the striatum of these mice **(C)**. The activity of NAPE-PLD **(D)** and that of FAAH **(E)** were conversely normal in the frontal cortex of EAE mice. \* $P < 0.001$ , \*\* $P < 0.0001$ .

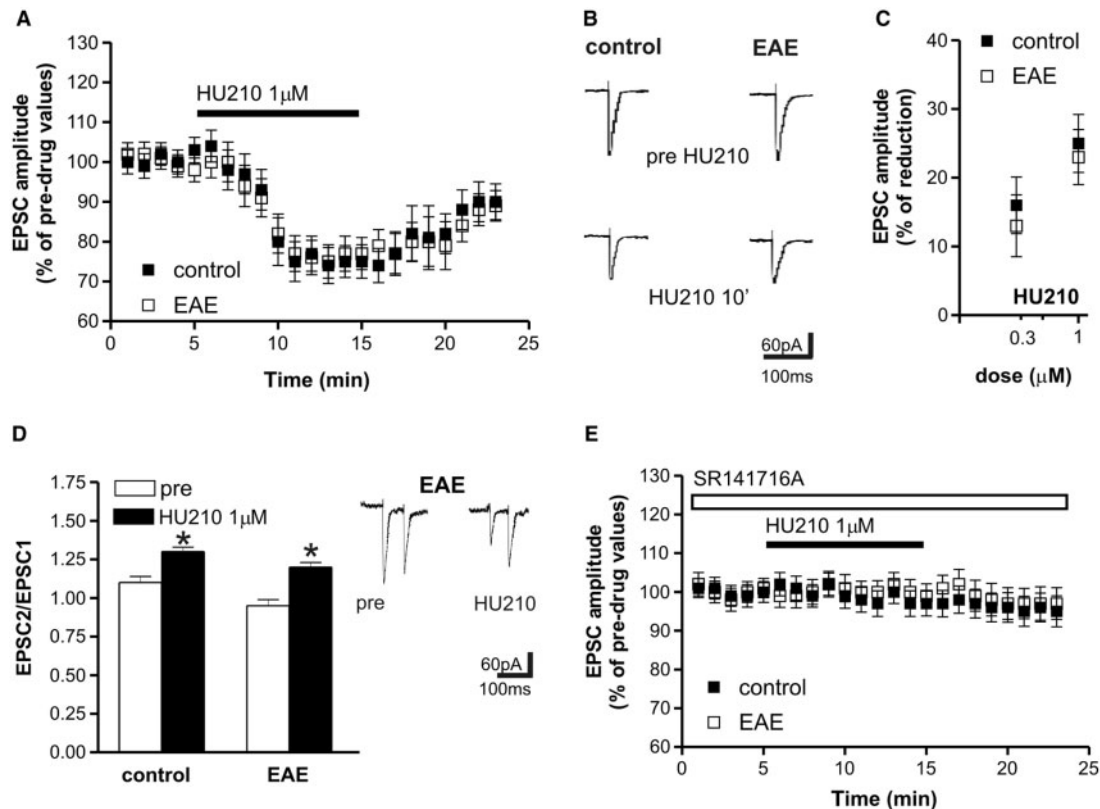
the striatum of EAE mice ( $n = 4$ ,  $P < 0.0001$ ), while this parameter was normal in the cortex (Fig. 6).

## Discussion

The results of the present study show that MS and EAE are associated with significant alterations of the ECS. We found that AEA, but not 2-AG, is increased in the CSF of MS patients, indicating that the two endocannabinoids are differentially engaged during CNS inflammatory diseases. These results are consistent with the emerging concept that AEA and 2-AG, although sharing many pharmacological actions, have differential regulatory mechanisms, and that AEA but not 2-AG is preferentially involved during pathological events (Chevaleyre *et al.*, 2006). We also found increased synthesis, reduced degradation and increased levels of AEA in lymphocytes of MS patients. These data might suggest that an important source of AEA in the CNS of MS subjects are inflammatory cells invading the brain from the periphery. In line with this hypothesis, a previous study reported significantly higher concentrations of AEA in active lesions than in quiescent lesions in MS patients (Eljaschewitsch *et al.*, 2006), and we have observed higher AEA levels in patients with inflammatory activity at the MRI. It should be recalled, however, that because of the special cellular and cytokine microenvironment in the CNS, it is not possible to draw direct conclusions

from peripheral lymphocytes to lymphocytes inside the CNS. Furthermore, it should be also noted that only AEA synthesis catalysed by NAPE-PLD was measured in this investigation, through a specific radiochromatographic method that we have recently developed (Fezza *et al.*, 2005) to assay the authentic NAPE-PLD described by Okamoto *et al.* (2004).

Increased synthesis, reduced degradation and increased levels of AEA have also been detected in the brains of EAE mice in the acute phase of the disease, paralleling the finding in acute MS subjects. In this respect, the normal (Witting *et al.*, 2006) or even low levels of AEA (Cabrane *et al.*, 2005) found in other studies is a likely expression of a different phase of the disease or of a different model. In the study by Witting *et al.* (2006), in fact, AEA levels have been measured in EAE mice with scarce disease activity (clinical score between 0 and 2), while in the study by Cabranes *et al.* (2005) EAE has been induced in rats. Furthermore, the consistency of the biochemical data obtained in striatal slices from EAE mice with those seen in patients with MS confirms the validity of our animal model of MS to study critical aspects of the human pathology, and lends support to the conclusion that striatal brain slice preparations do not perturb significantly ECS. In line with this idea, it has been previously observed that the alterations of AEA metabolism in corticostriatal slices from a rat model of Parkinson's disease



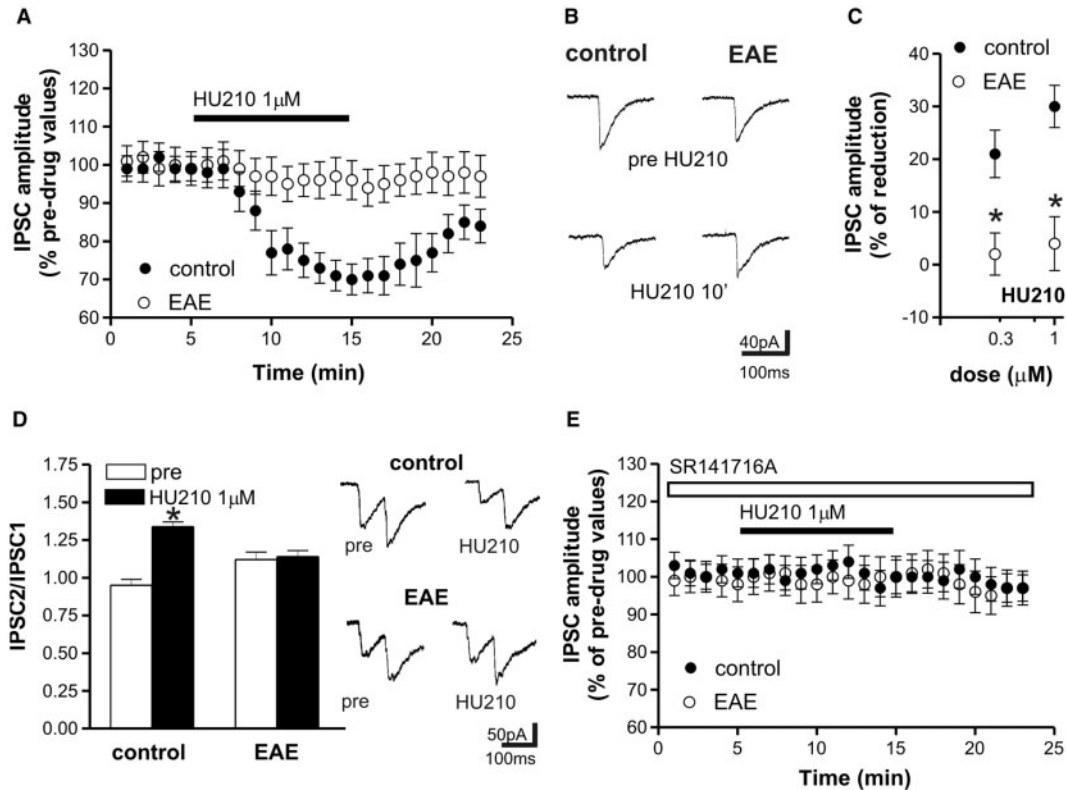
**Fig. 4** Effects of CBI receptor stimulation on evoked glutamate-mediated EPSCs in corticostriatal slices of control and EAE mice. **(A)** Application of the CBI receptor agonist HU210 reduced EPSC amplitude in control and EAE striatal neurons. **(B)** Examples of voltage-clamp recordings showing that evoked EPSCs are reversibly reduced by 1 μM HU210. **(C)** The depressant effect of HU210 was dose-dependent and similar in control and EAE mice. **(D)** HU210 application enhanced PPR in control and EAE slices. On the right there are samples of PPR recordings before and during the application of HU210 in EAE mice. **(E)** The depressant action of HU210 was abolished pre-incubating the slices with the selective antagonist of CBI receptors SR141716A. \* $P < 0.05$ .

(Gubellini *et al.*, 2002) were indeed similar to those seen in the CSF of Parkinson's disease patients (Pisani *et al.*, 2005).

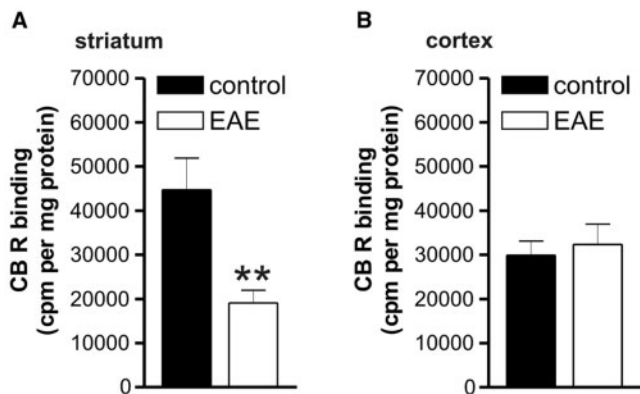
In EAE mice, we have also provided direct physiological evidence that neuronal responsiveness to cannabinoid CB1 receptor activation is altered. The selective loss of cannabinoid-mediated control of GABA transmission seen in this model of MS correlates with reduced expression of CB1 receptors, and indicates a fine rearrangement of neuronal ECS, which spares the regulation of glutamate transmission and involves the nucleus striatum, a sub-cortical area particularly vulnerable to the neurodegenerative process associated to MS (Bakshi *et al.*, 2002; Bermel *et al.*, 2003). This brain region is also a preferential site of action of the ECS in physiological and pathological conditions (Piomelli, 2003). Based on the assumption that the activation of the ECS system in MS and in EAE aims at limiting neuronal damage, it can be hypothesized that the down-regulation of cannabinoid receptors inhibiting GABA synapses takes part in this protective action by contrasting neuronal excitotoxic damage.

Excitotoxicity, in fact, plays a crucial role in MS- and in EAE-associated neuronal degeneration, as suggested by several lines of evidence. For example, glutamate

clearance is altered in EAE (Hardin-Pouzet *et al.*, 1997; Ohgoh *et al.*, 2002) as well as in MS (Werner *et al.*, 2001; Vallejo-Illarramendi *et al.*, 2006), and glutamate levels are significantly higher in the CSF (Stover *et al.*, 1997; Sarchielli *et al.*, 2003) and in the brains of MS patients (Srinivasan *et al.*, 2005). Finally, glutamate receptor antagonists exert beneficial effects in EAE (Wallstrom *et al.*, 1996; Bolton and Paul, 1997; Pitt *et al.*, 2000; Smith *et al.*, 2000) and in MS (Plaut, 1987), by limiting not only oligodendrocyte but also neuronal damage (Pitt *et al.*, 2000; Smith *et al.*, 2000). In EAE, the neuroprotective effects of cannabinoids are largely dependent on their ability to limit glutamate release and excitotoxic damage through the activation of CB1 receptors (Pryce *et al.*, 2003), implying that the dramatic increase of AEA levels seen in MS patients serves this biological action by stimulating CB1 receptors located on presynaptic glutamatergic nerve terminals. A concomitant stimulation of CB1 receptors regulating GABA release might be detrimental for this anti-glutamatergic action, by reducing in parallel synaptic inhibition. Thus, the selective insensitivity of GABA synapses to cannabinoid-mediated transmitter release seen in acute EAE might be important to prevent this unwanted effect of AEA, and to maximize its



**Fig. 5** Effects of CBI receptor stimulation on evoked GABA-mediated IPSCs in corticostriatal slices of control and EAE mice. **(A)** Application of the CBI receptor agonist HU210 reduced IPSC amplitude in control but not in EAE striatal neurons. **(B)** Examples of voltage-clamp recordings showing the lack of effect of HU210 on evoked IPSCs recorded from EAE mice. **(C)** The depressant effect of HU210 was dose-dependent in control mice. In EAE mice, conversely, the depressant action of HU210 on GABA transmission was lost for both concentrations. **(D)** HU210 application enhanced PPR in control but not in EAE slices. On the right there are samples of PPR recordings before and during the application of HU210 in control (upper traces) and EAE mice (lower traces). **(E)** The depressant action of HU210 on IPSC recorded in control mice was abolished pre-incubating the slices with the selective antagonist of CBI receptors SRI41716A. \* $P < 0.05$ .



**Fig. 6** Cannabinoid receptor binding in striatal and frontal cortical slices of control and EAE mice. **(A)** Cannabinoid CBI receptor binding was reduced in the striatum of EAE mice. **(B)** Cannabinoid CBI receptor binding was conversely normal in the cortex of these animals. \*\* $P < 0.0001$ .

anti-glutamatergic action. However, the increase of AEA tone in the brains of EAE mice do not seem to cause maximal neuroprotection, since it has been shown that manipulations that increase further AEA concentrations in

EAE result in additional neuroprotective effects (Mestre *et al.*, 2005; Ortega-Gutierrez *et al.*, 2005; Bari *et al.*, 2006; Ligresti *et al.*, 2006). Soluble mediators released during inflammation have been found to dampen AEA elevation in EAE (Witting *et al.*, 2006), possibly explaining why the concentrations of AEA, although elevated, are sub-optimal for this action.

In this study, we have not explored the effects of cannabinoid receptor stimulation on the inflammatory response in MS or EAE. This issue might be relevant to add further information on the biological significance of the observed rearrangement of AEA levels and metabolism in these disorders. However, the existing literature is highly supportive of a beneficial immunomodulatory action mediated by ECS activation during both MS and EAE (Centonze *et al.*, 2007). Accordingly, virtually all immune cells involved in the pathophysiology of MS and EAE express functional cannabinoid receptors (Galiegue *et al.*, 1995; Yiangou *et al.*, 2006), and evidence exists that stimulation of these receptors mediates complex inhibitory actions in these cells, accounting, at least in part, for the protective effects of direct and indirect cannabinoid agonists in MS and animal models of this disease



(Lyman *et al.*, 1989; Wirguin *et al.*, 1994; Arevalo-Martin *et al.*, 2003; Croxford and Miller, 2003; Mestre *et al.*, 2005; Ortega-Gutierrez *et al.*, 2005; Ligresti *et al.*, 2006). Accordingly, activation of CB2 receptors inhibits the production of several inflammatory cytokines, inhibits cell proliferation and chemotaxis, and limits nitric oxide and arachidonic acid release. All these factors are critical determinants for the maintenance of inflammation in MS and EAE (Pertwee, 2002; Walter and Stella, 2004; Ehrhart *et al.*, 2005; Eljaschewitsch *et al.*, 2006; Centonze *et al.*, 2007).

The fact that activated microglia, macrophages and lymphocytes express not only CB2 but also CB1 receptors suggests the possible involvement of both receptor subtypes in the anti-inflammatory effects of endocannabinoids in MS (Facchinetti *et al.*, 2003; Walter and Stella, 2004; present study). In this context, it should be recalled that AEA is a much better agonist of CB1 than CB2 receptors (Sugiura *et al.*, 2000; Pertwee, 2002), therefore it can be suggested that CB1 receptors are more involved than CB2 receptors in inflammatory neurodegenerative disorders like MS, where only the endogenous tone of AEA is modulated. Furthermore, a recent report allowed to extend to non-CB1 and non-CB2 receptors the inhibitory action of cannabinoids on immune cells. It has been demonstrated, in fact, that the synthetic cannabinoid agonist R(+)-WIN55,212-2 inhibits the IL-1 signalling pathway in human astrocytes through a pathway which does not involve characterized cannabinoid receptor subtypes (Curran *et al.*, 2005).

In conclusion, together with the previous experimental findings, our results suggest that during immuno-mediated attack of the CNS, the activation of ECS represents a protective mechanism aimed at reducing both neurodegenerative and inflammatory damage through various and partially converging mechanisms that involve neuronal and immune cells.

## Acknowledgements

We are grateful to Dr Cinzia Rapino (University of Teramo) for her skillful assistance with biochemical assays. This investigation was supported by Ministero dell'Università e della Ricerca (FIRB 2006) to M.M. and D.C., by Ministero della Salute to M.M. and D.C. (grants 2005 and 2006), by Fondazione TERCAS (Research Programs 2004 and 2005) to M.M. and by Agenzia Spaziale Italiana (DCMC and MoMa projects 2006) to M.M.

## References

- Arevalo-Martin A, Vela JM, Molina-Holgado E, Borrell J, Guaza C. Therapeutic action of cannabinoids in a murine model of multiple sclerosis. *J Neurosci* 2003; 23: 2511–6.
- Baker D, Pryce G, Croxford JL, Brown P, Pertwee RG, Makriyannis A, et al. Endocannabinoids control spasticity in a multiple sclerosis model. *FASEB J* 2001; 15: 300–2.
- Baker D, Pryce G, Giovannoni G, Thompson AJ. The therapeutic potential of cannabis. *Lancet Neurol* 2003; 2: 291–8.
- Bakshi R, Benedict RH, Bermel RA, Caruthers SD, Puli SR, Tjoa CW, et al. T2 hypointensity in the deep gray matter of patients with multiple sclerosis: a quantitative magnetic resonance imaging study. *Arch Neurol* 2002; 59: 62–8.
- Bari M, Battista N, Fezza F, Gasperi V, Maccarrone M. New insights into endocannabinoid degradation and its therapeutic potential. *Mini-Rev Med Chem* 2006; 6: 109–20.
- Benito C, Romero JP, Tolon RM, Clemente D, Docagne F, Hillard CJ, et al. Cannabinoid CB1 and CB2 receptors and fatty acid amide hydrolase are specific markers of plaque cell subtypes in human multiple sclerosis. *J Neurosci* 2007; 27: 2396–402.
- Bermel RA, Innus MD, Tjoa CW, Bakshi R. Selective caudate atrophy in multiple sclerosis: a 3D MRI parcellation study. *Neuroreport* 2003; 14: 335–9.
- Berrendero F, Sanchez A, Cabranes A, Puerta C, Ramos JA, Garcia-Merino A, et al. Changes in cannabinoid CB(1) receptors in striatal and cortical regions of rats with experimental allergic encephalomyelitis, an animal model of multiple sclerosis. *Synapse* 2001; 41: 195–202.
- Bjartmar C, Kinkel RP, Kidd G, Rudick RA, Trapp BD. Axonal loss in normal-appearing white matter in a patient with acute MS. *Neurology* 2001; 57: 1248–52.
- Bolton C, Paul C. MK-801 limits neurovascular dysfunction during experimental allergic encephalomyelitis. *J Pharmacol Exp Ther* 1997; 282: 397–402.
- Cabranes A, Venderova K, de Lago E, Fezza F, Sanchez A, Mestre L, et al. Decreased endocannabinoid levels in the brain and beneficial effects of agents activating cannabinoid and/or vanilloid receptors in a rat model of multiple sclerosis. *Neurobiol Dis* 2005; 20: 207–17.
- Centonze D, Battista N, Rossi S, Mercuri NB, Finazzi-Agrò A, Bernardi G, et al. A critical interaction between dopamine D2 receptors and endocannabinoids mediates the effects of cocaine on striatal GABAergic transmission. *Neuropsychopharmacology* 2004; 29: 1488–97.
- Centonze D, Finazzi-Agrò A, Bernardi G, Maccarrone M. The endocannabinoid system in targeting inflammatory neurodegenerative diseases. *Trends Pharmacol Sci* 2007; 28: 180–7.
- Centonze D, Rossi S, Prosperetti C, Tschertner A, Bernardi G, Maccarrone M, et al. Abnormal sensitivity to cannabinoid receptor stimulation might contribute to altered gamma-aminobutyric acid transmission in the striatum of R6/2 Huntington's disease mice. *Biol Psychiatry* 2005; 57: 1583–9.
- Chevaleyre V, Takahashi KA, Castello PE. Endocannabinoid-mediated synaptic plasticity in the CNS. *Annu Rev Neurosci* 2006; 29: 37–76.
- Consroe P. Brain cannabinoid systems as targets for the therapy of neurological disorders. *Neurobiol Dis* 1998; 6: 534–51.
- Consroe P, Musty R, Rein J, Tillery W, Pertwee R. The perceived effects of smoked cannabis on patients with multiple sclerosis. *Eur Neurol* 1997; 38: 44–8.
- Cravatt BF, Demarest K, Patricelli MP, Bracey MH, Giang DK, Martin BR, et al. Supersensitivity to anandamide and enhanced endogenous cannabinoid signaling in mice lacking fatty acid amide hydrolase. *Proc Natl Acad Sci USA* 2001; 98: 9371–6.
- Croxford JL, Miller SD. Immunoregulation of a viral model of multiple sclerosis using the synthetic cannabinoid R(+)-WIN55,212-2. *J Clin Invest* 2003; 111: 1231–40.
- Curran NM, Griffin BD, O'Toole D, Brady KJ, Fitzgerald SN, Moynagh PN. The synthetic cannabinoid R(+)-WIN 55,212-2 inhibits the interleukin-1 signaling pathway in human astrocytes in a cannabinoid receptor-independent manner. *J Biol Chem* 2005; 280: 35797–806.
- De Stefano N, Narayanan S, Francio SJ, Smith S, Mortella M, Tartaglia MC, et al. Diffuse axonal and tissue injury in patients with multiple sclerosis with low cerebral lesion load and no disability. *Arch Neurol* 2002; 59: 1565–71.
- Di Marzo V, Hill MP, Bisogno T, Crossman AR, Brotchie JM. Enhanced levels of endogenous cannabinoids in the globus pallidus are associated

- with a reduction in movement in an animal model of Parkinson's disease. *FASEB J* 2000; 14: 1432–8.
- Ehrhart J, Obregon D, Mori T, Hou H, Sun N, Bai Y, et al. Stimulation of cannabinoid receptor 2 (CB2) suppresses microglial activation. *J Neuroinflamm* 2005; 2: 29–32.
- Eljaschwitsch E, Witting A, Mawrin C, Lee T, Schmidt PM, Wolf S, et al. The endocannabinoid anandamide protects neurons during CNS inflammation by induction of MKP-1 in microglial cells. *Neuron* 2006; 49: 67–79.
- Facchinetti F, Del Giudice E, Furegato S, Passarotto M, Leon A. Cannabinoids ablate release of TNF $\alpha$  in rat microglial cells stimulated with lipopolysaccharide. *Glia* 2003; 41: 161–8.
- Fernandez-Ruiz J, Lastres-Becker I, Cabranes A, Gonzalez S, Ramos JA. Endocannabinoids and basal ganglia functionality. *Prostaglandins Leukot Essent Fatty Acids* 2002; 66: 257–67.
- Fezza F, Gasperi V, Mazzei C, Maccarrone M. Radiochromatographic assay of *N*-acyl-phosphatidylethanolamine-specific phospholipase D (NAPE-PLD) activity. *Anal Biochem* 2005; 339: 113–20.
- Filippi M, Bozzali M, Rovaris M, Gonen O, Kesavadas C, Ghezzi A, et al. Evidence for widespread axonal damage at the earliest clinical stage of multiple sclerosis. *Brain* 2003; 126: 433–7.
- Filippi M, Rocca MA. MRI evidence for multiple sclerosis as a diffuse disease of the central nervous system. *J Neurol* 2005; 252: S16–24.
- Galiegue S, Mary S, Marchand J, Dussosoy D, Carriere D, Carayon P, et al. Expression of central and peripheral cannabinoid receptors in human immune tissues and leukocyte subpopulations. *Eur J Biochem* 1995; 232: 54–61.
- Gerdeman G, Lovinger DM. CB1 cannabinoid receptor inhibits synaptic release of glutamate in rat dorsolateral striatum. *J Neurophysiol* 2001; 85: 468–71.
- Grundy RI, Rabuffetti M, Beltramo M. Cannabinoids and neuroprotection. *Mol Neurobiol* 2001; 24: 29–51.
- Gubellini P, Picconi B, Bari M, Battista N, Calabresi P, Centonze D, et al. Experimental parkinsonism alters endocannabinoid degradation: implications for striatal glutamatergic transmission. *J Neurosci* 2002; 22: 6900–7.
- Hardin-Pouzet H, Krakowski M, Bourbonniere L, Didier-Bazes M, Tran E, Owens T. Glutamate metabolism is down-regulated in astrocytes during experimental allergic encephalomyelitis. *Glia* 1997; 20: 79–85.
- Huang CC, Lo SW, Hsu KS. Presynaptic mechanisms underlying cannabinoid inhibition of excitatory synaptic transmission in rat striatal neurons. *J Physiol* 2001; 532: 731–48.
- Iversen L. Cannabis and the brain. *Brain* 2003; 126: 1252–70.
- Klein TW. Cannabinoid-based drugs as anti-inflammatory therapeutics. *Nat Rev Immunol* 2005; 5: 400–11.
- Kuhlmann T, Lingfeld G, Bitsch A, Schuchardt J, Bruck W. Acute axonal damage in multiple sclerosis is most extensive in early disease stages and decreases over time. *Brain* 2002; 125: 2202–12.
- Leung D, Saghatelian A, Simon GM, Cravatt BF. Inactivation of *N*-acyl phosphatidylethanolamine phospholipase D reveals multiple mechanisms for the biosynthesis of endocannabinoids. *Biochemistry* 2006; 45: 4720–6.
- Ligresti A, Cascio MG, Pryce G, Kulasegram S, Beletskaya I, De Petrocellis L, et al. New potent and selective inhibitors of anandamide reuptake with antispastic activity in a mouse model of multiple sclerosis. *Br J Pharmacol* 2006; 147: 83–91.
- Liu J, Wang L, Harvey-White J, Osei-Hyiaman D, Razdan R, Gong Q, et al. A biosynthetic pathway for anandamide. *Proc Natl Acad Sci USA* 2006; 103: 13345–50.
- Lyman WD, Sonett JR, Brosnan CF, Elkin R, Bornstein MB. Delta 9-tetrahydrocannabinol: a novel treatment for experimental autoimmune encephalomyelitis. *J Neuroimmunol* 1989; 23: 73–81.
- Maccarrone M. Fatty acid amide hydrolase: a potential target for next generation therapeutics. *Curr Pharm Design* 2006; 12: 759–72.
- Maccarrone M, Barboni B, Paradisi A, Bernabò N, Gasperi V, Pistilli MG, et al. Characterization of the endocannabinoid system in boar spermatozoa and implications for sperm capacitation and acrosome reaction. *J Cell Sci* 2005; 118: 4393–404.
- Maccarrone M, Di Rienzo M, Battista N, Gasperi V, Guerrieri P, Rossi A. The endocannabinoid system in human keratinocytes. Evidence that anandamide inhibits epidermal differentiation through CB1 receptor-dependent inhibition of protein kinase C, activation protein-1, and transglutaminase. *J Biol Chem* 2003; 278: 33896–903.
- Maccarrone M, Valensise H, Bari M, Lazzarin N, Romanini C, Finazzi-Agrò A. Progesterone up-regulates anandamide hydrolase in human lymphocytes: role of cytokines and implications for fertility. *J Immunol* 2001; 166: 7183–9.
- McDonald WI, Compston A, Edan G, Goodkin D, Hartung HP, Lublin FD, et al. Recommended diagnostic criteria for Multiple Sclerosis: guidelines from the International panel on the diagnosis of multiple sclerosis. *Ann Neurol* 2001; 50: 121–7.
- Mestre L, Correa F, Arevalo-Martin A, Molina-Holgado E, Valenti M, Ortas G, et al. Pharmacological modulation of the endocannabinoid system in a viral model of multiple sclerosis. *J Neurochem* 2005; 92: 1327–39.
- Monteleone P, Matias I, Martiadis V, De Petrocellis L, Maj M, Di Marzo V. Blood levels of the endocannabinoid anandamide are increased in anorexia nervosa and in binge-eating disorder, but not in bulimia nervosa. *Neuropsychopharmacology* 2005; 30: 1216–21.
- Ohgoh M, Hanada T, Smith T, Hashimoto T, Ueno M, Yamanishi Y, et al. Altered expression of glutamate transporters in experimental autoimmune encephalomyelitis. *J Neuroimmunol* 2002; 125: 170–8.
- Okamoto Y, Morishita J, Tsuboi K, Tonai T, Ueda N. Molecular characterization of a phospholipase D generating anandamide and its congeners. *J Biol Chem* 2004; 279: 5298–305.
- Ortega-Gutierrez S, Molina-Holgado E, Arevalo-Martin A, Correa F, Viso A, Lopez-Rodriguez ML, et al. Activation of the endocannabinoid system as therapeutic approach in a murine model of multiple sclerosis. *FASEB J* 2005; 19: 1338–40.
- Pertwee RG. Cannabinoids and multiple sclerosis. *Pharmacol Ther* 2002; 95: 165–74.
- Peterson JW, Bo L, Mork S, Chang A, Trapp BD. Transected neurites, apoptotic neurons, and reduced inflammation in cortical multiple sclerosis lesions. *Ann Neurol* 2001; 50: 389–400.
- Piomelli D. The molecular logic of endocannabinoid signalling. *Nat Rev Neurosci* 2003; 4: 873–84.
- Pisani A, Fezza F, Galati S, Battista N, Napolitano S, Finazzi-Agrò A, et al. High endogenous cannabinoid levels in the cerebrospinal fluid of untreated Parkinson's disease patients. *Ann Neurol* 2005; 57: 777–9.
- Pitt D, Werner P, Raine CS. Glutamate excitotoxicity in a model of multiple sclerosis. *Nat Med* 2000; 6: 67–70.
- Plaut GS. Effectiveness of amantadine in reducing relapses in multiple sclerosis. *J R Soc Med* 1987; 80: 91–3.
- Pluchino S, Quattrini A, Brambilla E, Gritti A, Salani G, Dina G, et al. Injection of adult neurospheres induces recovery in a chronic model of multiple sclerosis. *Nature* 2003; 422: 688–94.
- Pryce G, Ahmed Z, Hankey DJ, Jackson SJ, Croxford JL, Pocock JM, et al. Cannabinoids inhibit neurodegeneration in models of multiple sclerosis. *Brain* 2003; 126: 2191–202.
- Sarchielli P, Greco L, Floridi A, Floridi A, Gallai V. Excitatory amino acids and multiple sclerosis: evidence from cerebrospinal fluid. *Arch Neurol* 2003; 60: 1082–8.
- Shohami E, Mechoulam R. Multiple sclerosis may disrupt endocannabinoid brain protection mechanism. *Proc Natl Acad Sci USA* 2006; 103: 6087–8.
- Smith T, Groom A, Zhu B, Turski L. Autoimmune encephalomyelitis ameliorated by AMPA antagonists. *Nat Med* 2000; 6: 62–6.
- Srinivasan R, Sailasuta N, Hurd R, Nelson S, Pelletier D. Evidence of elevated glutamate in multiple sclerosis using magnetic resonance spectroscopy at 3 T. *Brain* 2005; 128: 1016–25.
- Stover JF, Pleines UE, Morganti-Kossmann MC, Kossmann T, Lowitzsch K, Kempfski OS. Neurotransmitters in cerebrospinal fluid reflect pathological activity. *Eur J Clin Invest* 1997; 27: 1038–43.

- Sugiura T, Kondo S, Kishimoto S, Miyashita T, Nakane S, Kodaka T, et al. Evidence that 2-arachidonoylglycerol but not *N*-palmitoylethanolamine or anandamide is the physiological ligand for the cannabinoid CB2 receptor. Comparison of the agonistic activities of various cannabinoid receptor ligands in HL-60 cells. *J Biol Chem* 2000; 275: 605–12.
- Szabo B, Dorner L, Pfreundtner C, Norenberg W, Starke K. Inhibition of GABAergic inhibitory postsynaptic currents by cannabinoids in rat corpus striatum. *Neuroscience* 1998; 85: 395–403.
- Vallejo-Illarramendi A, Domercq M, Perez-Cerda F, Ravid R, Matute C. Increased expression and function of glutamate transporters in multiple sclerosis. *Neurobiol Dis* 2006; 21: 154–64.
- Wallstrom E, Diener P, Ljungdahl A, Khademi M, Nilsson CG, Olsson T. Memantine abrogates neurological deficits, but not CNS inflammation, in Lewis rat experimental autoimmune encephalomyelitis. *J Neurol Sci* 1996; 137: 89–96.
- Walter L, Stella N. Cannabinoids and neuroinflammation. *Br J Pharmacol* 2004; 141: 775–85.
- Wang Y, Liu Y, Ito Y, Hashiguchi T, Kitajama I, Yamakuchi M, et al. Simultaneous measurement of anandamide and 2-arachidonoylglycerol by polymixin B-selective adsorption and subsequent high-performance liquid chromatography analysis: increase in endogenous cannabinoids in the sera of patients with endotoxic shock. *Anal Biochem* 2001; 294: 73–82.
- Werner P, Pitt D, Raine CS. Multiple sclerosis: altered glutamate homeostasis in lesions correlates with oligodendrocyte and axonal damage. *Ann Neurol* 2001; 50: 169–80.
- Wirguin I, Mechoulam R, Breuer A, Schezen E, Weidenfeld J, Brenner T. Suppression of experimental autoimmune encephalomyelitis by cannabinoids. *Immunopharmacol* 1994; 28: 209–14.
- Witting A, Chen L, Cudaback E, Straiker A, Walter L, Rickman B, et al. Experimental autoimmune encephalomyelitis disrupts endocannabinoid-mediated neuroprotection. *Proc Natl Acad Sci USA* 2006; 103: 6362–7.
- Yiangou Y, Facer P, Durrenberger P, Chessell IP, Naylor A, Bountra C, et al. COX-2, CB2 and P2X7-immunoreactivities are increased in activated microglial cells/macrophages of multiple sclerosis and amyotrophic lateral sclerosis spinal cord. *BMC Neurol* 2006; 6: 12.
- Zajicek J, Fox P, Sanders H, Wright D, Vickery J, Nunn A, et al. UK MS Research Group. Cannabinoids for treatment of spasticity and other symptoms related to multiple sclerosis (CAMS study): multicentre randomised placebo-controlled trial. *Lancet* 2003; 362: 517–26.