

Open string amplitudes and large order behavior in topological string theory

Marcos Mariño¹

Department of Physics, CERN
Geneva 23, CH-1211 Switzerland

marcos@mail.cern.ch

Abstract

We propose a formalism inspired by matrix models to compute open and closed topological string amplitudes in the B-model on toric Calabi–Yau manifolds. We find closed expressions for various open string amplitudes beyond the disk, and in particular we write down the annulus amplitude in terms of theta functions on a Riemann surface. We test these ideas on local curves and local surfaces, providing in this way generating functionals for open Gromov–Witten invariants in the spirit of mirror symmetry. In the case of local curves, we study the open string sector near the critical point which leads to 2d gravity, and we show that toric D-branes become FZZT branes in a double-scaling limit. We use this connection to compute non-perturbative instanton effects due to D-branes that control the large order behavior of topological string theory on these backgrounds.

¹Also at Departamento de Matemática, IST, Lisboa, Portugal

Contents

1	Introduction	2
2	Open string amplitudes and matrix models	4
2.1	General aspects and open Gromov–Witten interpretation	5
2.2	The annulus amplitude	8
2.3	Other topological string amplitudes from matrix models	12
3	Local curves	14
3.1	Closed string sector and phase transitions	14
3.2	Open string amplitudes	17
3.3	FZZT branes, instantons, and large order behavior	19
4	Local surfaces	25
4.1	Local $\mathbb{P}^1 \times \mathbb{P}^1$	26
4.2	Local \mathbb{P}^2	28
5	Conclusions and open problems	31

1 Introduction

Topological strings constitute an important subsector of string theory with various physical and mathematical applications, and they have been extensively investigated since they were first formulated. This has led to many different ways of computing their amplitudes based very often on string dualities. Topological strings come in two types, the A model and the B model, which are related by mirror symmetry. The A model provides a physical formulation of Gromov–Witten theory, and it can be solved on toric backgrounds by a large N duality with Chern–Simons theory. The B model is deeply related to the theory of deformation of complex structures, and the amplitudes in the closed string sector satisfy holomorphic anomaly equations [14] which can be used to solve the theory in many cases.

The open string sector of topological string theory is not as well understood as the closed one. For example, the open string analogue of the holomorphic anomaly equations has not been formulated yet. Most of the explicit results in the open B model refer to disk amplitudes, which have been studied in detail in the local Calabi–Yau (CY) case [7, 5, 32, 46, 47] and more recently in the compact case [64, 60]. In [2] a general framework was proposed to understand the B–model on local CY geometries, but in practice its use has been limited to the simplest local model i.e. the topological vertex.

On top of these practical problems concerning the computation of the amplitudes, there are more conceptual problems related to the nature of the string perturbation series. Like other string theories, topological strings are defined in a perturbative, genus by genus expansion, and we do not have a general definition beyond perturbation theory. Some proposals have emerged based on holographic descriptions related to black hole physics [58], and in some simple cases these descriptions have been worked out in detail [6], but much remains to be done in order to understand these fundamental issues.

In this paper we discuss the open string sector of the B model and the nature of the topological string perturbation series by relying on ideas and techniques of matrix models. Dijkgraaf and Vafa have shown that, in some local Calabi–Yau backgrounds, the B model reduces to a matrix model [25], but the backgrounds they considered do not include the toric backgrounds with an interesting enumerative geometry. Some of these, like the resolved conifold and the A_N fibrations over \mathbb{P}^1 that engineer $\mathcal{N} = 2$ gauge theories, admit a matrix model description closely related to Chern–Simons theory [49, 3]. However, the matrix model that one finds in this way is difficult to solve and its applications have been limited.

A way to remedy this situation is to notice that the $1/N$ expansion of a matrix model can be substantially generalized and reformulated, leading to a geometric construction that starts with a Riemann surface and defines recursively a set of open and closed amplitudes on it. This construction emerges in a natural way when one solves the loop equations of a matrix model. It was started in [12] and has culminated in the work of Eynard and collaborators (see [26, 19, 20], and specially [29], where this point of view is stated most clearly). The general construction includes as a particular case the $1/N$ expansion of the standard one–matrix model with a polynomial potential. In that case, the spectral curve encoding the planar solution can be described by an equation of the form,

$$y^2(x) = M^2(x)\sigma(x), \quad \sigma(x) = \prod_{i=1}^n (x - x_i), \quad (1.1)$$

where $M(x)$ is a polynomial in x . The corresponding closed and open amplitudes obtained from the general geometric construction of [26, 29] are then the free energies and correlation functions, respectively, of the matrix model underlying (1.1).

For an arbitrary Riemann surface we should expect that the quantities obtained in this formalism are general amplitudes for a chiral boson living on the curve, since the $1/N$ expansion of a matrix model can be reformulated in this way [43]. On the other hand, it was shown in [2] that the B model on a general local Calabi–Yau geometry is described as well by a chiral boson living on a Riemann surface. It is then natural to conjecture that the geometric amplitudes defined in [26, 20, 29] describe open and closed string amplitudes

for the local B model, once the appropriate spectral curve has been found. We will see in this paper that this is the case also for toric geometries. The spectral curve can be obtained from the disk amplitudes, and it is of the form (1.1) but with a nonpolynomial $M(x)$. Using this we give closed B model formulae for various open string amplitudes on toric CY threefolds beyond the disk level, like annulus amplitudes and three-holed sphere amplitudes, which we test in various examples. In these tests we focus on so-called outer brane amplitudes of toric geometries. We expect that our formalism can accommodate more general cases, and we offer a preliminary discussion of this issue in the concluding section.

Another advantage of matrix models is that one has a good control of instanton effects in the form of eigenvalue tunneling [21, 62]. This has been used to understand the properties of the string perturbation series in the double-scaled models which describe non-critical strings, by using the standard connection between instanton effects and large order behavior in perturbation theory [45]. In [17] it was found that topological strings on local curves provide a realization of 2d gravity near a critical point at small radius in Kähler moduli space. This was done through a detailed analysis of the closed string sector. Here we analyze the open string sector of these models to test our general matrix model formalism, and we show that, in the double scaling limit, toric D-branes become the FZZT branes of 2d gravity. This allows us to identify computable, non-perturbative instanton effects due to D-branes which are responsible for the large order behavior of topological string perturbation theory away from criticality. Our analysis suggests that in some circumstances one can find Borel-summable string perturbation series.

The organization of this paper is the following. In section 2 we review open string amplitudes in the local setting and the relevant matrix model results, and we present our proposal for the computation of open (and closed) string amplitudes in the local B model. In section 3 we analyze the example of local curves. We test our proposal and we analyze the instanton effects controlling the large order behavior. Section 4 presents further tests for two local surfaces: local $\mathbb{P}^1 \times \mathbb{P}^1$ and local \mathbb{P}^2 . In section 5 we conclude with various problems and comment on possible developments.

2 Open string amplitudes and matrix models

In this section we first review various aspects of topological string theory relevant to this paper and then we make our proposal. General recent references on topological strings include [50, 63, 55], to which we refer the reader for background material.

2.1 General aspects and open Gromov–Witten interpretation

Let us consider topological string theory on a Calabi–Yau manifold X . To define the open string sector in the A model we have to specify a Lagrangian submanifold \mathcal{L} of X [65]. The type-A open topological string theory describes holomorphic maps from open Riemann surfaces of genus g and with h holes $\Sigma_{g,h}$ to the Calabi–Yau X , with Dirichlet boundary conditions specified by \mathcal{L} . These holomorphic maps are usually called open string instantons. The topological sector of an open string instanton is given by two different kinds of data: the boundary part and the bulk part. For the bulk part, the topological sector is labelled by relative homology classes, since we are requiring the boundaries of $f_*[\Sigma_{g,h}]$ to end on \mathcal{L} . Therefore, we will set

$$f_*[\Sigma_{g,h}] = \beta \in H_2(X, \mathcal{L}). \quad (2.1)$$

To specify the topological sector of the boundary, we will assume that $b_1(\mathcal{L}) = 1$, so that $H_1(\mathcal{L})$ is generated by a non-trivial one-cycle γ . We then have

$$f_*[C_i] = w_i \gamma, \quad w_i \in \mathbf{Z}, \quad i = 1, \dots, h, \quad (2.2)$$

i.e. w_i is the winding number associated to the map f restricted to C_i . We will collect these integers into a single h -uple denoted by $w = (w_1, \dots, w_h)$.

The free energy of type-A open topological string theory at fixed genus and boundary data w , which we denote by $F_{w,g}(t)$, can be computed as a sum over open string instantons labelled by the bulk classes:

$$F_{g,w}(t) = \sum_{\beta} F_{g,w,\beta} Q^{\beta}. \quad (2.3)$$

In this equation, the sum is over relative homology classes $\beta \in H_2(X, \mathcal{L})$. The quantities $F_{w,g,\beta}$ are open Gromov–Witten invariants, and they ‘count’ in an appropriate sense the number of holomorphically embedded Riemann surfaces of genus g in X with Lagrangian boundary conditions specified by \mathcal{L} , and in the class represented by β, w . Finally, Q^{β} denotes $\exp(-\sum_i \beta_i t_i)$, where the index $i = 1, \dots, b_2(X, \mathcal{L})$ runs over a basis of $H_2(X, \mathcal{L})$. It is useful to have a generating functional for open string amplitudes at fixed genus

$$F_g(z_1, \dots, z_h) = \sum_{w_i} F_{g,w}(t) z_1^{w_1} \dots z_h^{w_h}. \quad (2.4)$$

Particularly important cases of these amplitudes are the disk and the annulus amplitudes, which correspond to $g = 0$ and $h = 1, 2$, respectively. We will denote them by $W(z)$ and $A(z_1, z_2)$. These amplitudes have the following spacetime interpretation [14, 53]. If one considers N D6 branes wrapping the Lagrangian submanifold \mathcal{L} , the resulting four-dimensional worldbrane theory is an $U(N)$ gauge theory with $\mathcal{N} = 1$ supersymmetry

and chiral fields associated to the closed and open moduli t, z . The superpotential for these moduli is precisely the disk instanton amplitude $W(z)$, while $A(z, z)$ gives the gauge kinetic term.

It should be possible to compute these open string amplitudes directly in the B-model, and then use mirror symmetry to relate them to the amplitudes in the A model, as it was done in [7, 5] for the disk. A special case where we know the B model answer is the situation considered by Dijkgraaf and Vafa in [25]. In the local CY backgrounds of [25] the B-model reduces to a matrix model for a Hermitian matrix M , and open string amplitudes have the following interpretation. Define the connected h -point functions,

$$W(p_1, \dots, p_h) = \left\langle \text{Tr} \frac{1}{p_1 - M} \cdots \text{Tr} \frac{1}{p_h - M} \right\rangle^{(c)}, \quad (2.5)$$

which are generating functionals for matrix model correlators

$$W(p_1, \dots, p_h) = \sum_{k_i \geq 1} \langle \text{Tr} M^{k_1} \cdots \text{Tr} M^{k_h} \rangle^{(c)} p_1^{-k_1-1} \cdots p_h^{-k_h-1}. \quad (2.6)$$

These quantities have a genus expansion of the form,

$$W(p_1, \dots, p_h) = \sum_{g=0}^{\infty} g_s^{2g-2+h} W_g(p_1, \dots, p_h). \quad (2.7)$$

If we set $z_i = p_i^{-1}$, the relation with (2.4) is simply

$$W_g(z_1, \dots, z_h) = z_1^2 \partial_{z_1} \cdots z_h^2 \partial_{z_h} F_g(z_1, \dots, z_h), \quad h \geq 2. \quad (2.8)$$

The case of $g = 0, h = 1$ is slightly different. The generating functional is the resolvent of the matrix model, and it is related to the disk amplitude as

$$\omega_0(z) = z + z^2 \partial_z W(z). \quad (2.9)$$

In the case of a one-matrix model with a polynomial potential $V(M)$, the resolvent is always of the form (see for example [23, 51])

$$\omega_0(p) = \frac{1}{2}(V'(p) + y(p)), \quad (2.10)$$

where $y(p)$ is the spectral curve describing the planar model and can be written as in (1.1). The points x_i are the branch points of the curve.

Consider now the case in which X is a toric CY threefold. The mirror CY can be written in terms of an algebraic equation,

$$F(e^u, e^v) = 0, \quad (2.11)$$

which defines implicitly a function $v(u)$. It was shown in [7] that in these geometries there are Lagrangian submanifolds \mathcal{L} with the topology of $\mathbb{S}^1 \times \mathbb{C}$ whose disk amplitudes can be easily computed in the mirror geometry (2.11). As shown in [7, 5], they are simply given by

$$W(u) = \int^u du' v(u'). \quad (2.12)$$

Here, one identifies the open string modulus as $z = e^u$. There are various subtleties in this procedure. First of all, there are various types of Lagrangian submanifolds in these geometries depending on their location in the toric diagram. The choice of parametrization of the curve (2.11) depends on this location. Second, the variables appearing in (2.11) are not flat coordinates. There is an open/closed mirror map of the form

$$U = U(u, t), \quad (2.13)$$

where the flat open coordinate depends on the closed string moduli t . One has to reexpress the superpotential in terms of the U variable in order to extract geometric information. We will discuss these issues in more detail in section 4, when we consider concrete examples. In any case, the above results suggest to define a resolvent for these local models as

$$\omega_0(p) = \frac{1}{p}(1 + v(p)), \quad (2.14)$$

The function $v(p)$ has in general the structure

$$v(p) = \log \left[\frac{a(p) + \sqrt{\sigma(p)}}{c(p)} \right], \quad \sigma(p) = \prod_{i=1}^n (p - x_i). \quad (2.15)$$

If we now use the identity,

$$\log \left(\frac{a + \sqrt{\sigma}}{c} \right) = \frac{1}{2} \log \frac{a^2 - \sigma}{c^2} + \tanh^{-1} \left(\frac{\sqrt{\sigma}}{a} \right). \quad (2.16)$$

we see, by comparing (2.10) and (2.15), that the role of the spectral curve is played in these geometries by the equation

$$y(p) = \frac{2}{p} \tanh^{-1} \left[\frac{\sqrt{\prod_{i=1}^n (p - x_i)}}{a(p)} \right]. \quad (2.17)$$

This can be written in the form (1.1) but with a non-polynomial function $M(p)$:

$$M(p) = \frac{2}{p\sqrt{\sigma(p)}} \tanh^{-1} \left[\frac{\sqrt{\sigma(p)}}{a(p)} \right]. \quad (2.18)$$

Notice that this curve can be obtained from the generating function for disk amplitudes $v(p)$, or equivalently from the D6 brane superpotential $W(z)$.

Finally, we recall that open topological string amplitudes on Calabi–Yau manifolds have an underlying integrality structure first obtained in [59] and further refined in [44, 52]. In the case of genus zero amplitudes with h holes, integrality leads to an expansion of the form

$$F_{0,w}(z_1, \dots, z_h) = \sum_{\beta, w_i} \sum_{d=1}^{\infty} d^{h-3} n_{0,w}^{\beta} z_1^{dw_1} \dots z_h^{dw_h} Q^{d\beta}, \quad (2.19)$$

where $n_{0,w}^{\beta}$ are integer numbers and give open string analogues of the Gopakumar–Vafa invariants.

2.2 The annulus amplitude

We start our discussion of open string amplitudes with the annulus amplitude,

$$A(p, q) = \sum_{k, \ell \geq 1} F_{0,k,\ell}(t) p^{-k} q^{-\ell}, \quad (2.20)$$

where k, ℓ are winding numbers. It corresponds to the two–point planar amplitude in the matrix model,

$$W_0(p, q) = \partial_p \partial_q A(p, q), \quad (2.21)$$

with the expansion,

$$W_0(p, q) = \sum_{k, \ell \geq 1} k \ell F_{0,k,\ell}(t) p^{-k-1} q^{-\ell-1}. \quad (2.22)$$

The amplitude $W_0(p, q)$ is, together with the spectral curve itself, the most important ingredient in the analysis of loop equations, since it determines the rest of the amplitudes by recursion. In the case of the annulus amplitude it is also easy to make the connection between the theory of the chiral boson and the formalism of matrix models [43].

Let us then compute the annulus amplitude in the B–model, in the case of a local Calabi–Yau case described by (2.11). As shown in [2], the B–model on (2.11) reduces to the theory of a chiral boson living on the curve Σ_g associated to (2.11). This chiral boson has a classical piece given by

$$\partial \phi_{\text{cl}}(u) = v(u). \quad (2.23)$$

The disk amplitude is given by the one–point function of this chiral boson,

$$W(u) = \langle \phi(u) \rangle. \quad (2.24)$$

Since only the classical part of the boson field contributes to this correlation function, one immediately recovers (2.12). The annulus amplitude should be given by the connected two–point function of the chiral boson,

$$A(p, q) = \langle \phi(p)\phi(q) \rangle^{(c)}. \quad (2.25)$$

Here, p, q are local coordinates on the Riemann surface chosen in such a way that, as $p, q \rightarrow \infty$, $A(p, q)$ vanishes. Only the quantum fluctuations of the chiral boson contribute to this connected correlator. It is well–known that this correlation function is a natural object on the Riemann surface Σ_g which can be expressed in terms of theta functions. Let us define the Abel map,

$$u_i(p) = \int_{p_0}^p \omega_i(p') dp', \quad i = 1, \dots, g, \quad (2.26)$$

where $\omega_i(p)dp$ is a basis of Abelian differentials on Σ_g and p_0 is a basepoint. We then have,

$$A(p, q) = \log \vartheta_*(\mathbf{u}(p) - \mathbf{u}(q)|\tau) - \log(p - q). \quad (2.27)$$

where the subscript $*$ means that the theta function has an *odd* characteristic, and we have subtracted the singular part of the correlator. The closely related quantity (2.21) is given by

$$W_0(p, q) = \langle \partial\phi(p)\partial\phi(q) \rangle^{(c)} = B(p, q) - \frac{1}{(p - q)^2} \quad (2.28)$$

where $B(p, q)$ is sometimes called the Bergmann kernel. It can be also written as

$$B(p, q) = \partial_p \partial_q E(p, q), \quad (2.29)$$

where $E(p, q)$ is the prime form on Σ_g . Equation (2.27) generalizes the computation of the annulus amplitude for a target torus in [36], chapter 35.4, to mirror geometries given by a general Riemann surface Σ_g . The result (2.28) for the two–point connected function is a standard result in the matrix model literature, see for example [26, 29].

Notice that $W_0(p, q)$ and $A(p, q)$ are holomorphic, but they are not modular invariant. Under a symplectic transformation

$$\tau \rightarrow (A\tau + B)(C\tau + D)^{-1}, \quad (2.30)$$

the theta function transforms as

$$\vartheta_*(\mathbf{u}|\tau) \rightarrow \left(\det(C\tau + D) \right)^{\frac{1}{2}} \exp[i\pi\mathbf{u}(C\tau + D)^{-1}C\mathbf{u}] \vartheta_*(\mathbf{u}|\tau), \quad (2.31)$$

and $W_0(p, q)$ transforms with a shift²

$$W_0(p, q) \rightarrow W_0(p, q) + 2\pi i \omega(p) (C\tau + D)^{-1} C \omega(q). \quad (2.32)$$

Following the philosophy of [22, 37, 1], one can obtain a modular invariant object by adding an antiholomorphic piece,

$$\widetilde{W}_0(p, q) = W_0(p, q) + \pi \omega(p) (\text{Im } \tau)^{-1} \omega(q). \quad (2.33)$$

This object satisfies a very simple holomorphic anomaly equation. The Kähler metric on the Jacobian is

$$g_{k\bar{l}} = (\tau - \bar{\tau})_{kl}, \quad (2.34)$$

and the tensor

$$C_{ijk} = \frac{\partial \tau_{ij}}{\partial t^k} \quad (2.35)$$

is the three-point function in the closed string sector. The antiholomorphic dependence of $\widetilde{W}_0(p, q)$ is captured by

$$\frac{\partial \widetilde{W}_0(p, q)}{\partial \bar{t}^k} + 2\pi i \omega_i(p) \bar{C}_k^{ij} \omega_j(q) = 0, \quad (2.36)$$

where we have raised the indices with the inverse metric $g^{i\bar{j}}$. In the context of the holomorphic anomaly equation of [14] one can construct a propagator S^{ij} satisfying

$$\partial_{\bar{k}} S^{ij} = \bar{C}_k^{ij}, \quad (2.37)$$

therefore one can integrate (2.36) to write

$$\widetilde{W}_0(p, q) = -2\pi i \omega_i(p) S^{ij} \omega_j(q) + f, \quad (2.38)$$

where f (the ambiguity appearing as an integration constant) is holomorphic in the closed string moduli.

There is another modular invariant object closely related to $A(p, q)$. As shown in [10], the theta function appearing in (2.27) can be interpreted as the determinant of the chiral Dirac operator on Σ_g , for a choice of odd spin structure, and in the presence of a background gauge field of the form

$$- \pi \mathbf{v} (\text{Im } \tau)^{-1} \omega + \text{h.c.}, \quad (2.39)$$

²The modular properties of open and closed amplitudes in matrix models are extensively discussed in [29].

where we set $\mathbf{v} = \mathbf{u}(p) - \mathbf{u}(q)$. This determinant, which we will denote by $\det D(\mathbf{v})$, depends on a choice of a point in the Jacobian, and it is a holomorphic function of \mathbf{v} . The natural, modular invariant object constructed out of this determinant is,

$$\det D(\mathbf{v})^\dagger D(\mathbf{v}) = (\det \operatorname{Im} \tau)^{-\frac{1}{2}} \exp \left[-2\pi \operatorname{Im} \mathbf{v} (\operatorname{Im} \tau)^{-1} \operatorname{Im} \mathbf{v} \right] \left| \vartheta_*(\mathbf{v}|\tau) \right|^2. \quad (2.40)$$

If we regard the theta function as a section of a line bundle \mathcal{L} on the Jacobian, then the above quantity is the norm of this section. It is then natural to promote

$$A(p, q) \rightarrow \tilde{A}(p, q) = \log \det D(\mathbf{v})^\dagger D(\mathbf{v}) - \log |p - q|^2. \quad (2.41)$$

In contrast to (2.33), the determinant (2.40) is not holomorphic as a function of the open moduli \mathbf{v} , and its antiholomorphic dependence is computed by the Quillen anomaly

$$\partial \bar{\partial} \log \det D(\mathbf{v})^\dagger D(\mathbf{v}) = -2\pi i c_1(\mathcal{L}). \quad (2.42)$$

As it stands, the formula (2.27) is not easy to use in explicit computations. Fortunately, the Bergmann kernel $B(p, q)$ plays an important role in the theory of matrix models since it gives an explicit expression for the correlation function (2.25) (see for example [26, 29] and references therein). Its most important property is that it only depends on the spectral curve through the positions of the branch points x_i . We will assume in the following that there are $2s$ branch points coming in pairs. The fact that $W_0(p, q)$ only depends on x_i was proved in [13] for $s = 1$, in [8] for $s = 2$, and for general s in [11]. For $s = 1$ the spectral curve has genus zero and $W_0(p, q)$ is given by [13]

$$W_0(p, q) = \frac{1}{2(p - q)^2} \left(\frac{pq - \frac{1}{2}(p + q)(x_1 + x_2) + x_1 x_2}{\sqrt{(p - x_1)(p - x_2)(q - x_1)(q - x_2)}} - 1 \right). \quad (2.43)$$

For $s = 2$ the spectral curve has genus one, and $W_0(p, q)$ can be written in terms of Weierstrass function (see, for example, section 3.6 of [15]). An explicit expression in terms of the branch points was found by Akemann in [8]:

$$\begin{aligned} W_0(p, q) = & \frac{1}{4(p - q)^2} \left(\sqrt{\frac{(p - x_1)(p - x_4)(q - x_2)(q - x_3)}{(p - x_2)(p - x_3)(q - x_1)(q - x_4)}} \right. \\ & \left. + \sqrt{\frac{(p - x_2)(p - x_3)(q - x_1)(q - x_4)}{(p - x_1)(p - x_4)(q - x_2)(q - x_3)}} \right) \\ & + \frac{(x_1 - x_3)(x_2 - x_4)}{4\sqrt{\prod_{i=1}^4 (p - x_i)(q - x_i)}} \frac{E(k)}{K(k)} - \frac{1}{2(p - q)^2}, \end{aligned} \quad (2.44)$$

where $K(k)$, $E(k)$ are elliptic functions of the first and second kind with modulus

$$k^2 = \frac{(x_1 - x_4)(x_2 - x_3)}{(x_1 - x_3)(x_2 - x_4)}. \quad (2.45)$$

It can be easily checked that these expressions have the expansion in p, q given in (2.22). One finds, for example, that

$$F_{0,1,1}(t) = \frac{(x_1 - x_2)^2}{16}, \quad F_{0,1,2}(t) = \frac{1}{32}(x_1 - x_2)^2(x_1 + x_2), \quad (2.46)$$

for $s = 1$. For $s = 2$ one has

$$F_{0,1,1}(t) = \frac{1}{4}(x_1 - x_3)(x_2 - x_4)\frac{E(k)}{K(k)} + \frac{1}{16}(x_1 + x_4 - x_2 - x_3)^2. \quad (2.47)$$

In order to apply these formulae in the toric case, we write the spectral curve (2.17) from the disk amplitudes, and we read the position of the branch points from the zeros of the square root involved in the expression. How do we order them? The branch points come in pairs and define cuts in the complex plane. Each cut corresponds to a fixed “filling fraction.” For example, for $s = 2$ the cuts are (x_1, x_4) and (x_2, x_3) [41]. In the B model context, we will require that the cuts shrink to zero size at large radius/large complex structure, so that $k^2 = 0$ at this point. This will lead to an expansion of the amplitudes compatible with the A-model interpretation at large radius.

2.3 Other topological string amplitudes from matrix models

As we have seen, the annulus amplitude is particularly useful since it can be expressed simply in terms of the positions of the branch points of the spectral curve. The main result of [12, 8, 26, 19, 29] is that all free energies and correlation functions in the $1/N$ expansion of one and two-matrix models can be obtained recursively from the knowledge of the spectral curve and the two-point function (2.28). The recursion relation of [26, 29, 20, 29] involves evaluation of residues of meromorphic forms on the curve (1.1) at the branch points. In order to write down this recursion, we first notice that near any branchpoint x_i there are two points q, \bar{q} with the same coordinate $x(q) = x(\bar{q})$. We now introduce the one-form,

$$dE_{q,\bar{q}}(p) = \frac{1}{2} \int_{\bar{q}}^q d\xi B(\xi, p), \quad (2.48)$$

where $B(\xi, q)$ is the Bergmann kernel (2.29). The recursion relation for the correlation functions reads,

$$W_g(p, p_1, \dots, p_h) = - \sum_{i=1}^{2s} \text{Res}_{q=x_i} \frac{dE_{q, \bar{q}}(p)}{(y(q) - y(\bar{q}))dx(q)} \left(W_{g-1}(q, \bar{q}, p_1, \dots, p_h) \right. \\ \left. + \sum_{\ell=0}^g \sum_{m=0}^h \sum_{\sigma \in S(h)} \frac{1}{m!(h-m)!} W_{g-\ell}(q, p_{\sigma(1)}, \dots, p_{\sigma(m)}) W_{\ell}(\bar{q}, p_{\sigma(m+1)}, \dots, p_{\sigma(h)}) \right), \quad (2.49)$$

where the sum over $\sigma \in S(h)$ is over permutations of h elements. There is also an explicit expression which computes the amplitudes F_g in the closed sector from the open amplitudes $W_g(p)$. In that sense, open string amplitudes are more fundamental. The resulting formulae for the amplitudes require only the following information about the spectral curve:

$$x_i, \quad \frac{d^k M(x_i)}{dp^k}, \quad i = 1, \dots, n, \quad k \geq 0, \quad (2.50)$$

i.e. the position of the branch points and the ‘‘moments’’ of the function $M(p)$. In principle, the computation of these amplitudes is straightforward, but explicit expressions become cumbersome very quickly, specially when the number of cuts $s > 1$. We list some of them here, since they will be used in the tests performed in this paper.

The three-point function at genus zero can be written for general s and was derived in [26]. Define first,

$$G_0(p, q) = \sigma(p)\sigma(q) \left(4W_0(p, q) + \frac{2}{(p-q)^2} \right). \quad (2.51)$$

Then, we have

$$W_0(p, q, r) = - \frac{1}{8\sigma(p)\sigma(q)\sigma(r)} \sum_{i=1}^{2s} \frac{G_0(x_i, p)G_0(x_i, q)G_0(x_i, r)}{M(x_i)\sigma'(x_i)^2}. \quad (2.52)$$

For $s = 1$ this simplifies to

$$W_0(p, q, r) = \frac{x_1 - x_2}{8(\sigma(p)\sigma(q)\sigma(r))^{3/2}} \left(\frac{(p-x_1)(q-x_1)(r-x_1)}{M(x_1)} - \frac{(p-x_2)(q-x_2)(r-x_2)}{M(x_2)} \right). \quad (2.53)$$

One can also write down results at higher genus. Knowledge of the first moments $M(x_i)$ makes possible to write down an explicit expression for F_1 . General formulae have been written down in [24, 18]. For $s = 1$ we have the simple formula,

$$F_1 = - \frac{1}{24} \log[M(x_1)M(x_2)(x_1 - x_2)^4], \quad (2.54)$$

while for $s = 2$ we have [8, 41]

$$F_1 = -\frac{1}{24} \sum_{i=1}^4 \ln M(x_i) - \frac{1}{2} \ln K(k) - \frac{1}{12} \sum_{i<j} \ln(x_i - x_j)^2 + \frac{1}{8} \ln(x_1 - x_3)^2 + \frac{1}{8} \ln(x_2 - x_4)^2. \quad (2.55)$$

One can also compute explicitly $W_1(p)$, which involves the second set of moments $M'(x_i)$, in the cases $s = 1, 2$, by using the results of [12, 8], respectively. We emphasize that all these results are particular cases of the recursive procedure developed in [26, 19, 29] that we just reviewed.

Although the above expressions were derived in the context of matrix models, we claim that they will lead to the correct open and closed B-model topological string amplitudes on a general local Calabi–Yau manifold, provided we use the spectral curve derived from the disk generating functional. In the next two sections we will provide evidence for our claim by studying some well-known toric CYs.

3 Local curves

3.1 Closed string sector and phase transitions

By local curves we refer to the family of toric Calabi–Yau manifolds given by the total space of a bundle over a sphere,

$$X_p = \mathcal{O}(p-2) \oplus \mathcal{O}(-p) \rightarrow \mathbb{P}^1, \quad p \in \mathbb{Z}. \quad (3.1)$$

A notational warning: in this section, p will denote the integer labeling X_p , and not a point on the spectral curve as in the rest of the sections of this paper. Topological string theory on X_p has been very much studied recently (see [6] and references therein). As explained in [16], the A model has to be defined equivariantly. The most natural choice (the equivariant Calabi–Yau case) corresponds to the antidiagonal action on the bundle. As usual, the topological closed string amplitudes $F_g(t)$ are put together into a single total free energy,

$$F_{X_p}(g_s, t) = \sum_{g=0}^{\infty} g_s^{2g-2} F_g^{X_p}(t) \quad (3.2)$$

and its exponential is the closed partition function

$$Z_{X_p} = \exp F_{X_p}(g_s, t). \quad (3.3)$$

Here, t is the only complexified Kähler parameter of X_p , and it corresponds to the size of \mathbb{P}^1 .

Closed and open partition functions on toric geometries can be computed by using the topological vertex introduced in [4], and we will rely extensively on it to test the B–model expressions. We collect here some formulae from the theory of the topological vertex which will be useful in the following. First of all, we define the q -number $[n]$ as

$$[n] = q^{n/2} - q^{-n/2}, \quad q = e^{g_s}. \quad (3.4)$$

A representation R of $U(\infty)$ is encoded by a Young tableau, labeled by the lengths of its rows $\{l_i\}$. The quantity

$$\ell(R) = \sum_i l_i \quad (3.5)$$

is the total number of boxes of the tableau. Another important quantity associated to a tableau is

$$\kappa_R = \sum_i l_i(l_i - 2i + 1). \quad (3.6)$$

We also introduce the quantity

$$W_R = q^{-\kappa_R/4} \prod_{\square \in R} \frac{1}{[\text{hook}(\square)]}, \quad (3.7)$$

as well as

$$W_{R_1 R_2} = q^{(\kappa_{R_1} + \kappa_{R_2})/2} \sum_R W_{R_1^t/R} W_{R_2^t/R}, \quad (3.8)$$

where R^t denotes the transpose tableau (i.e. the tableau where we exchange rows and columns), the “skew” W_R is defined by

$$W_{R/R'} = \sum_{R''} N_{R'R''}^R W_{R''} \quad (3.9)$$

and $N_{R_1 R_2}^R$ is the Littlewood–Richardson coefficient defined by the tensor product of $U(\infty)$,

$$R_1 \otimes R_2 = \sum_R N_{R_1 R_2}^R R. \quad (3.10)$$

Both (3.7) and (3.8) are particular cases of the topological vertex, which is given by

$$C_{R_1 R_2 R_3} = q^{\frac{\kappa_{R_2} + \kappa_{R_3}}{2}} \sum_{Q_1, Q_3, Q} N_{QQ_1}^{R_1} N_{QQ_3}^{R_3} \frac{W_{R_2^t Q_1} W_{R_2 Q_3}}{W_{R_2}}. \quad (3.11)$$

The topological string partition function on X_p is given in terms of the W_R defined in (3.7):

$$Z_{X_p} = \sum_R W_R W_{R^t} q^{(p-1)\kappa_R/2} Q^{\ell(R)}, \quad Q = (-1)^p e^{-t}. \quad (3.12)$$

Although (3.12) gives an all-genus expression, it is effectively an expansion in powers of Q . In order to obtain an expression for each $F_g^{X_p}(t)$ to all degrees in Q , one usually appeals to mirror symmetry. Since mirror symmetry in this equivariant setting is not so well-developed (see however [30] for recent progress), in [17] we analyzed the saddle of the sum over tableaux (3.12) directly. We found that the saddle is encoded in a density of tableaux $\rho(\lambda)$ with support on the interval

$$(x_2, x_1) \cup (x_1, e), \quad (3.13)$$

where $x_{1,2}$ are nontrivial functions of the Kähler parameter t . To specify these, one introduces the mirror map

$$Q = (1 - \zeta)^{-p(p-2)}\zeta. \quad (3.14)$$

The endpoints of the cut are given in terms of ζ by

$$x_1 = (1 - \zeta)^{-p}(1 + \zeta^{\frac{1}{2}})^2, \quad x_2 = (1 - \zeta)^{-p}(1 - \zeta^{\frac{1}{2}})^2. \quad (3.15)$$

We note that the variable ζ is related to the variable w introduced in [17] by $\zeta = 1 - w$. This saddle-point solution was used in [17] to show that the above model has critical behavior for $p > 2$. At the critical point

$$\zeta_c = \frac{1}{(p-1)^2}, \quad (3.16)$$

the theory undergoes a phase transition in the universality class of pure 2d gravity. In fact, if one takes the double-scaling limit

$$\zeta \rightarrow \zeta_c, \quad g_s \rightarrow 0, \quad z \text{ fixed}, \quad (3.17)$$

where

$$z^{5/2} = g_s^{-2} \frac{(p-1)^8}{4(1-\zeta_c)^3} (\zeta_c - \zeta)^5, \quad (3.18)$$

then the total free energy (3.2) becomes the free energy of 2d gravity,

$$F_{(2,3)}(z) = -\frac{4}{15}z^{5/2} - \frac{1}{48}\log z + \sum_{g \geq 2} a_g z^{-5(g-1)/2}, \quad (3.19)$$

where the coefficients a_g can be obtained by solving the Painlevé I equation

$$u^2 - \frac{1}{6}u'' = z \quad (3.20)$$

satisfied by the specific heat

$$u(z) = -F''_{(2,3)}(z). \quad (3.21)$$

3.2 Open string amplitudes

We will now consider toric D–branes in the outer leg of the toric diagram associated to the geometry X_p , as shown in Fig. 1. We will focus here on $p > 2$. For $p = 1$ (the resolved conifold) there is an explicit matrix model description of the background (the Chern–Simons matrix model of [50]) and one can use this to study D–brane amplitudes [57, 38]. It is well–known that open string amplitudes associated to non-compact branes need the specification of a framing [5]. Here, as well as in the rest of the examples, we will set the framing to zero. These brane amplitudes can be computed in the A model by using the topological vertex, and they are encoded in the generating functional

$$F(V) = \log Z(V), \tag{3.22}$$

where

$$Z(V) = \frac{1}{Z_{X_p}} \sum_R Z_R \text{Tr}_R V. \tag{3.23}$$

In this example we have that

$$Z_R = \sum_S W_{RS} q^{(p-1)\kappa_S/2} Q^{\ell(S)} W_S. \tag{3.24}$$

The functional (3.23) is related to the generating functions (2.4) as follows:

$$F(V) = \sum_{g=0}^{\infty} \sum_{h=1}^{\infty} g_s^{2g-2+h} F_g(z_1, \dots, z_h), \tag{3.25}$$

after identifying

$$z_1^{w_1} \dots z_h^{w_h} \leftrightarrow \text{Tr } V^{w_1} \dots \text{Tr } V^{w_h}. \tag{3.26}$$

According to the general philosophy explained in the previous section, the first step in order to compute the open string amplitudes is the identification of the spectral curve. This can be obtained from the disk amplitudes. If we had a well–defined mirror symmetry setting for local curves we could derive the superpotential with the techniques of [7, 5]. However, here we do not know of any construction like (2.11) which allows to determine $W(z)$ by integration, and we have to use another approach. Fortunately, the analysis of [17] gives a detailed description of the saddle of the sum over partitions in terms of an effective matrix model, and we should expect that the resolvent of such a model is the object we need. Indeed, let us define

$$\omega_0(\lambda) = \int_{x_2}^e \frac{dv}{v} \frac{\rho(v)}{\lambda - v} - \frac{1}{\lambda} \log \frac{\lambda}{\lambda - e}. \tag{3.27}$$

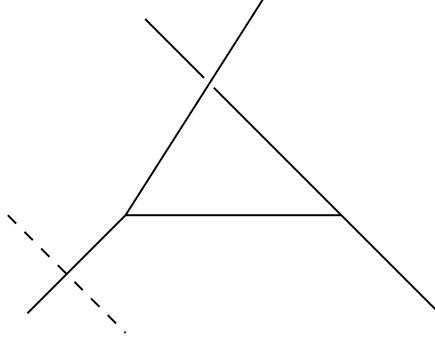


Figure 1: The outer brane in X_p .

Notice that this differs from the resolvent as defined in [17], but it is more natural since it integrates the density of tableaux over its full support. After some calculations one finds,

$$\omega_0(\lambda) = \frac{1}{\lambda} + \frac{p}{2\lambda} \log \left[2 \frac{\sqrt{(\lambda - x_1)(\lambda - x_2)} - \lambda - \sqrt{x_1 x_2}}{(\sqrt{x_1} + \sqrt{x_2})^2} \right]^2 + \frac{1}{\lambda} \log \left[\frac{(\sqrt{\lambda - x_1} + \sqrt{\lambda - x_2})^2}{4\lambda} \right]. \quad (3.28)$$

We can write this, using (2.16), in the form

$$\omega_0(\lambda) = \frac{1}{2}(V'(\lambda) + y(\lambda)), \quad (3.29)$$

where

$$V'(\lambda) = \frac{p-2}{\lambda} \log \lambda - \frac{t}{\lambda} \quad (3.30)$$

plays the role of the potential. The spectral curve is

$$y(\lambda) = \frac{2}{\lambda} \left(\tanh^{-1} \left[\frac{\sqrt{(\lambda - x_1)(\lambda - x_2)}}{\lambda - \frac{x_1 + x_2}{2}} \right] - p \tanh^{-1} \left[\frac{\sqrt{(\lambda - x_1)(\lambda - x_2)}}{\lambda + \sqrt{x_1 x_2}} \right] \right). \quad (3.31)$$

One can check that the resolvent (3.28) is the generating function for disk amplitudes. After using (2.9) one finds,

$$W(z) = \left(1 + Q + \frac{(-1+p)pQ^2}{2} + \frac{p(-1+6p-8p^2+3p^3)Q^3}{6} + \dots \right) z + \left(\frac{1}{4} + Q + \frac{(1+2p^2)Q^2}{4} + \frac{p(-2+3p-4p^2+3p^3)Q^3}{6} + \dots \right) z^2 + \dots. \quad (3.32)$$

This is precisely what one obtains in a topological vertex calculation (and leads to integer disk invariants for all p after taking into account the sign $(-1)^p$ in (3.12)). This also confirms that (3.31) is the spectral curve for this model.

As we explained in the previous section, all open and closed string amplitudes in this background can be derived from the knowledge of the branch points and of the moments of $M(\lambda)$, which involve the values of $M(\lambda)$ and its derivatives at these branchpoints. The branch points of the curve (3.31) are of course x_1, x_2 , and $M(\lambda)$ is obtained from the defining equation (1.1). Using this information, together with the mirror map (3.14), we can compute the annulus amplitude from (2.43). We obtain the expansion

$$\begin{aligned}
A(z_1, z_2) = & \left(Q + p^2 Q^2 + \frac{p^2}{2} (1 - 4p + 3p^2) Q^3 \right. \\
& + \frac{p^2}{3} (1 - 9p + 24p^2 - 24p^3 + 8p^4) Q^4 + \dots \Big) z_1 z_2 \\
& + \left(Q + (1 + p + p^2) Q^2 + \frac{p}{2} (-1 + 2p + 3p^3) Q^3 \right. \\
& \left. + \frac{p}{6} (-1 + 8p - 20p^2 + 21p^3 - 24p^4 + 16p^5) Q^4 + \dots \right) z_1 z_2^2 + \dots
\end{aligned} \tag{3.33}$$

in agreement with a vertex computation for the outer brane. It is also easy to compute (2.54). The first moments are given by

$$M(x_1) = \frac{2}{x_1} \left(\frac{2}{x_1 - x_2} - \frac{p}{\sqrt{x_1}(\sqrt{x_1} + \sqrt{x_2})} \right), \quad M(x_2) = \frac{2}{x_2} \left(\frac{2}{x_2 - x_1} - \frac{p}{\sqrt{x_2}(\sqrt{x_1} + \sqrt{x_2})} \right). \tag{3.34}$$

One finds, up to an irrelevant numerical constant,

$$F_1 = -\frac{1}{24} \log \left[\frac{(p-1)^2 \zeta(\zeta_c - \zeta)}{(1-\zeta)^3} \right]. \tag{3.35}$$

This genus one amplitude can be written as

$$F_1 = F_1^{\text{inst}} + \frac{1}{24} \log Q, \tag{3.36}$$

where F_1^{inst} is the instanton part of F_1 which was presented in eq. (6.1) of [17] and rederived in [30]. Of course, this reproduces the answer obtained from (3.12). We have explicitly checked that the open string amplitudes with $g = 0, h = 3$ and $g = 1, h = 1$ derived in the matrix model formalism agree with vertex computations. Notice that the $g = h = 1$ amplitude involves the derivative of $M(\lambda)$ at the branch points, and therefore it probes in detail the structure of the spectral curve (3.31).

3.3 FZZT branes, instantons, and large order behavior

As we reviewed above, for $p > 2$, topological string theory on X_p leads to 2d gravity in a suitable double-scaling limit around the transition point in Kähler moduli space $\zeta = \zeta_c$.

We showed this in [17] by analyzing the closed string amplitudes. Now we have closed expressions for open string amplitudes (in particular, for the disk and the annulus), and we can analyze the double-scaling limit from the open string sector point of view.

First of all, we recall that the critical point has a natural interpretation in terms of the spectral curve describing the model: it corresponds precisely to the value of the parameter ζ (or Q) for which a zero of the function $M(\lambda)$ coincides with the endpoint of the cut x_1 . This happens when

$$M(x_1) = 0, \tag{3.37}$$

which indeed holds at the critical point (3.16).

Let us now consider the double-scaling limit of the disk and the annulus amplitude. For the disk amplitude, the scaling part is precisely the spectral curve (3.31). We first notice that near criticality the endpoints behave as

$$x_1 = x_1^{(c)} + \theta(\zeta - \zeta_c) + \mathcal{O}(\zeta - \zeta_c)^2, \quad x_2 = x_2^{(c)} + \mathcal{O}(\zeta - \zeta_c)^2 \tag{3.38}$$

where

$$\begin{aligned} x_1^{(c)} &= (1 - \zeta_c)^{-p} \frac{p^2}{(p-1)^2}, \\ x_2^{(c)} &= (1 - \zeta_c)^{-p} \frac{(p-2)^2}{(p-1)^2}, \\ \theta &= 2(1 - \zeta_c)^{-p} \frac{p(p-1)}{p-2}. \end{aligned} \tag{3.39}$$

The open string modulus λ in (3.31) must scale like

$$\lambda = x_1^{(c)} - \theta(\zeta - \zeta_c)s + \mathcal{O}(\zeta - \zeta_c)^2. \tag{3.40}$$

This defines the “renormalized” open string modulus s and says that, in the scaling limit, the brane must be located near the endpoint of the cut. We now reexpress (3.31) in terms of the scaling variables s and z , which is given in (3.18). After some cancellations, we find that

$$\frac{1}{g_s} y(\lambda) d\lambda \rightarrow y(s) ds = -\frac{4\sqrt{2}}{3} z^{\frac{5}{4}} (2s-1) \sqrt{1+s} ds, \tag{3.41}$$

for all $p > 2$. The r.h.s. is nothing but the Laplace transform of the macroscopic loop operator of 2d gravity [31, 23], and it corresponds to the disk amplitude of the FZZT brane of Liouville theory (see [61, 48] and references therein). Notice in particular that, up to a normalization, the double-scaled spectral curve (3.41) is nothing but

$$T_2(y) = T_3(s), \tag{3.42}$$

where $T_n(\cos z) = \cos(nz)$ are Chebyshev polynomials of the first kind. This is the spectral curve of the (2, 3) model [23, 61]. The main conclusion of this analysis is that the outer, toric D-brane of the local curve X_p shown in Fig. 1 becomes, in the double-scaling limit, the FZZT brane of pure 2d gravity. One can further check this by taking the double-scaling limit of the annulus amplitude, which is

$$W(\lambda, \mu) \rightarrow \frac{1}{(s-t)^2} \left(\frac{1}{2} \frac{2+s+t}{\sqrt{(1+s)(1+t)}} - 1 \right), \quad (3.43)$$

up to an overall constant. Here we have expressed μ in terms of the renormalized open string modulus t (not to be confused with the Kähler parameter). The r.h.s. of (3.43) is the Laplace transform of the two-point function of the macroscopic loop operator [13, 31], which corresponds to the annulus amplitude of the FZZT brane. Of course, the fact that the annulus amplitude (2.43) has this limit when we scale its arguments in the way we have done it was noticed long ago in [13]. What is not obvious here is that annulus amplitudes for toric D-branes are given as well by an expression like (2.43). This is a consequence of the formalism proposed in section 2, and it implies that the toric brane becomes a FZZT brane near $\zeta = \zeta_c$.

It can be easily shown from the Painlevé I equation (3.20) that the coefficients a_g of the perturbative genus expansion (3.19) have the asymptotics

$$a_g \sim A^{-2g} (2g)!, \quad (3.44)$$

where

$$A = \frac{8\sqrt{3}}{5}, \quad (3.45)$$

see for example [23]³. Based on general considerations in quantum field theory [45] we would expect that the large order behavior in (3.44) is controlled by instanton effects of the form

$$\exp(-Az^{\frac{5}{4}}). \quad (3.46)$$

It was noticed in [62, 21] that this instanton has a natural interpretation in terms of eigenvalue tunneling. Recall that in the context of the matrix models, the variable x in (1.1) is an eigenvalue of the underlying matrix. The instanton effect is obtained as we move one single eigenvalue at the end of the cut x_1 to a saddle point of the effective potential, located at the top of a potential barrier. This point x_0 satisfies

$$M(x_0) = 0, \quad (3.47)$$

³The normalization in section 7.2 of this reference is appropriate for an even potential. The generic critical potential leads to an extra $\sqrt{2}$ in A as compared to their computation.

and it is the zero of $M(\lambda)$ which collides with x_1 at the critical point. The instanton action is given by

$$A = \int_{x_1}^{x_0} y(\lambda) d\lambda. \quad (3.48)$$

As we approach the critical point, $x_1 \rightarrow x_0$ and (3.48) vanishes. But in the double-scaling limit, since $g_s \rightarrow 0$ simultaneously, we find a nonzero result for A/g_s . David explicitly showed in [21] that one obtains in this way the value (3.45). Indeed, we can recover his result from our toric realization of 2d gravity. In terms of the renormalized open string variable s , the positions of x_1, x_0 are given by $s = -1$ and $s = 1/2$, respectively, as one can immediately verify by looking at (3.40) and (3.41). We can then compute the instanton action in the double-scaling limit to be

$$-\frac{4\sqrt{2}}{3} \int_{-1}^{\frac{1}{2}} ds (2s-1) \sqrt{1+s} \quad (3.49)$$

which agrees precisely with (3.45).

We would like however to extend this analysis *off criticality*, in order to understand non-perturbative effects and the large order behavior of perturbation theory in topological string theory. In analogy with the 2d gravity limit, the relevant instanton effects will be obtained as we move the toric brane from the endpoint of the cut to a saddle point. The instanton action will now be a function of the couplings of the theory, as it is familiar from the analysis of instanton effects and large order behavior in the $1/N$ expansion (see [35] for examples in low dimensions). In our case, the action will depend on Q , and we will have a non-perturbative effect of the form

$$\exp\left(-\frac{A(Q)}{g_s}\right), \quad (3.50)$$

leading to the large order behavior

$$F_g(Q) \sim (A(Q))^{-2g} (2g)!. \quad (3.51)$$

The instanton action $A(Q)$ is given by the integral (3.48) in the full theory, where $y(\lambda)$ is (3.31) and x_0 is now the zero of $M(\lambda)$ which gives the dominant instanton contribution, i.e. the instanton with the smallest action in absolute value (recall that in general the instanton action might be complex). At least for Q near Q_c , we expect that, due to the connection to 2d gravity, the point x_0 becomes the point $s = 1/2$ in the double-scaling limit. This means that it will behave like

$$x_0 = x_1^{(c)} - \frac{1}{2}\theta(\zeta - \zeta_c) + \mathcal{O}(\zeta - \zeta_c)^2 \quad (3.52)$$

near the critical point. The solutions of $M(\lambda) = 0$ are easily obtained for any given p . For example, for $p = 3$, one finds a unique solution,

$$x_0 = \frac{4x_1x_2}{(\sqrt{x_1} - \sqrt{x_2})^2}, \quad p = 3, \quad (3.53)$$

which behaves indeed like (3.52). For $p = 4$ there are three solutions, and the one with the right critical behavior (3.52) is given by

$$x_0 = \frac{2\sqrt{x_1x_2}}{\sqrt{x_1} - \sqrt{x_2}}, \quad p = 4. \quad (3.54)$$

The integral (3.48) can be computed in closed form. One obtains,

$$A(Q) = F(x_0) - F(x_1), \quad (3.55)$$

where

$$\begin{aligned} F(x) = & -\log(f_1(x)) \left(\log(f_1(x)) - 2\log\left(1 + \frac{2f_1(x)}{(\sqrt{x_1} - \sqrt{x_2})^2}\right) + \log\left(1 + \frac{2f_1(x)}{(\sqrt{x_1} + \sqrt{x_2})^2}\right) \right) \\ & - 2\text{Li}_2\left(-\frac{2f_1(x)}{(\sqrt{x_1} - \sqrt{x_2})^2}\right) - 2\text{Li}_2\left(-\frac{2f_1(x)}{(\sqrt{x_1} + \sqrt{x_2})^2}\right) - \log\frac{(x_1 - x_2)^2}{4} \log x \\ & - p \log(f_2(x)) \left(\log(f_2(x)) + 2\log\left(1 - \frac{f_2(x)}{2\sqrt{x_1x_2}}\right) - \log\left(1 - \frac{2f_2(x)}{(\sqrt{x_1} + \sqrt{x_2})^2}\right) \right) \\ & - 2p\text{Li}_2\left(-\frac{f_2(x)}{2\sqrt{x_1x_2}}\right) + 2p\text{Li}_2\left(\frac{2f_2(x)}{(\sqrt{x_1} + \sqrt{x_2})^2}\right) + \frac{p}{2}(\log x)^2 + p \log(\sqrt{x_1} + \sqrt{x_2})^2 \log x \end{aligned} \quad (3.56)$$

and

$$\begin{aligned} f_1(x) &= \sqrt{(x - x_1)(x - x_2)} + x - \frac{x_1 + x_2}{2}, \\ f_2(x) &= \sqrt{(x - x_1)(x - x_2)} + x + \sqrt{x_1x_2}. \end{aligned} \quad (3.57)$$

It is easy to check, for the values of x_0 that scale like (3.52), that this action indeed becomes (3.45) in the double-scaling limit.

Let us first analyze the instanton effects for Q real and positive in the range $Q_c > Q_0 > 0$. In this case, the branch points x_1, x_2 , as well as x_0 , are on the real axis, with $0 < x_2 < x_1 < x_0$, and the instanton effect corresponds to a single brane moving from x_1 to x_0 (see the left hand side of Fig. 2). This leads to an instanton action which is real and positive and vanishes at the critical point Q_c . In Fig. 3 we show the values of this action for $p = 3, 4$ as a function of Q in this range. Since this instanton effect is of order $1/g_s$, this analysis shows that, for $p > 2$ and Q real and positive, the genus expansion (3.2) has the typical stringy divergence $\sim (2g)!$ [62] and it is not Borel summable.

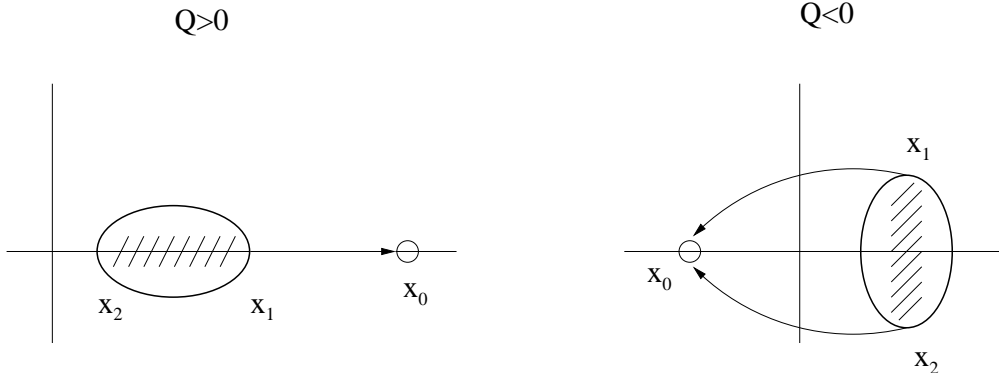


Figure 2: This figure shows the instanton effects in the $p = 3$ theory for real Q . When $Q > 0$ the cut (x_1, x_2) is in the real axis and the instanton is obtained by moving one brane from x_1 to x_0 . For $Q < 0$, $x_{1,2}$ are complex, with $x_1 = x_2^*$. The cut is parallel to the imaginary axis and there are two complex conjugate instantons obtained by moving the branes at the two edges of the cut.

It is interesting to compare this behavior to the one found in the Hermitian matrix model with a potential of the form

$$\frac{1}{2}\text{Tr } M^2 + \kappa\text{Tr } M^4. \quad (3.58)$$

The $F_g(\kappa)$ are analytic at $\kappa = 0$ with a radius of convergence $r = 1/48$. The genus expansion diverges as $(2g)!$, and the instanton action behaves very differently depending on the value of κ . For $-1/48 < \kappa < 0$ it is real and positive, and the genus expansion is not Borel summable. This of course reflects the instability of the model for negative κ and leads to the non-Borel summability of 2d gravity. Topological string theory on X_p with $p > 2$, $Q_c > Q > 0$ shows exactly the same behavior that the quartic matrix model in the unstable region.

Of course, in topological string theory the parameter Q is in general complex, due to the presence of the B field, and this will lead to complex instanton actions. Let us consider for example the case $p = 3$, and Q in the range $-Q_c < Q < 0$, in which the genus expansion (3.2) is still real and each $F_g^{X_3}(Q)$ converges. For these values of Q the branch points x_1, x_2 are complex conjugate to each other, and the point x_0 moves to the negative real axis. The instanton effects are obtained by analytic continuation from the case $Q > 0$ that we have just analyzed, where the instanton is real. The instanton obtained by moving one brane from x_1 to x_0 is now complex, but since the free energy is still real, we should expect two instantons with complex conjugate actions. The other

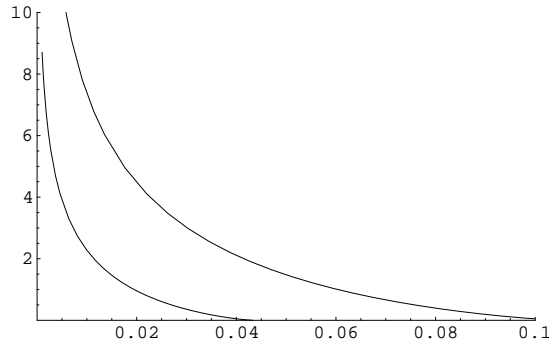


Figure 3: This figure shows the instanton action (3.55) as a function of $Q_c > Q > 0$. The upper line corresponds to $p = 3$, while the lower line is $p = 4$. The action vanishes at $Q_c(p)$, and it is real and positive.

instanton is obtained by moving one brane from the other end of the Fermi surface, i.e. from x_2 , to x_0 (see the right hand side of Fig. 2). Since the instantons are now complex, the resulting genus expansion might be Borel summable. For general, complex Q , the cut (x_1, x_2) will be located in a generic direction in the complex plane, and one should analyze in detail the possible instantons obtained by moving the branes to the zeroes of $M(\lambda)$. The instanton actions in this more general setting can be computed as well from the analytic result (3.56).

Our analysis indicates that, for real positive values of $Q < Q_c$, the string perturbation series will not be Borel summable, as in 2d gravity, but it also suggests that one can find Borel-summable expansions by rotating Q in the complex plane. As a final comment, we recall that instanton effects in 2d gravity can be interpreted in terms of ZZ branes [9]. The contribution of the ZZ brane can be written as the difference of two FZZT branes located at the points x_1 and x_0 , as in (3.55) [61, 48]. The above computation in topological string theory is very similar due to the underlying matrix model structure.

4 Local surfaces

In this section we discuss two of the most studied examples in topological string theory, namely the local Calabi–Yau manifolds obtained by considering the anticanonical bundle on $\mathbb{P}^1 \times \mathbb{P}^1$ and on \mathbb{P}^2 . We will make explicit the prescription of section 2 to compute open string amplitudes and present some examples. We will focus in all cases in outer branes with zero framing.

4.1 Local $\mathbb{P}^1 \times \mathbb{P}^1$

The local $\mathbb{P}^1 \times \mathbb{P}^1$ geometry has two Kähler parameters Q_s, Q_t . The mirror can be described by the equation (2.11) with [5]

$$F(e^u, e^v) = e^u + z_t e^{-u} + e^v + z_s e^{-v} + 1. \quad (4.1)$$

The variables u, v are only defined up to a $\text{SL}(2, \mathbb{Z})$ transformation, and one chooses one description or another depending on the brane that one wants to describe. The variables z_t, z_s are the linear sigma model parameters, which are related to Q_t, Q_s through the mirror map. The explicit expression for this map is,

$$\begin{aligned} Q_t &= z_t \exp \left[2 \sum_{k, l \geq 0} \frac{(2k + 2l - 1)!}{(k!)^2 (l!)^2} z_t^k z_s^l \right], \\ Q_s &= z_s \exp \left[2 \sum_{k, l \geq 0} \frac{(2k + 2l - 1)!}{(k!)^2 (l!)^2} z_t^k z_s^l \right]. \end{aligned} \quad (4.2)$$

The inversion of (4.2) gives

$$z_t = Q_t - 2Q_s Q_t - 2Q_t^2 + \dots, \quad z_s = Q_s - 2Q_s Q_t - 2Q_s^2 + \dots. \quad (4.3)$$

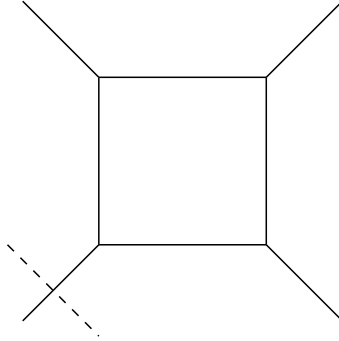


Figure 4: The outer brane in local $\mathbb{P}^1 \times \mathbb{P}^1$.

Let us now consider the disk amplitude for an outer brane in this geometry, shown in Fig. 4. This was computed in [5, 46]⁴. The function $v(z)$ is given by

$$v(z) = \log \left[\frac{1 - z + z_s z^2 + \sqrt{(1 - z + z_s z^2)^2 - 4z_t z^2}}{2} \right]. \quad (4.4)$$

⁴This is brane III in the notation of [5]. The results presented in table 3 of this paper do not seem to be correct, however. A computation of the disk superpotential for the outer brane of local $\mathbb{P}^1 \times \mathbb{P}^1$ is presented in example A.2 of [46], and this can be checked against the topological vertex.

In order to make contact with enumerative results in the A model, we have to take into account the important fact that the open string modulus z is not a flat coordinate. There is a nontrivial open mirror map, and in the case of the outer brane in local $\mathbb{P}^1 \times \mathbb{P}^1$ this is given by

$$z = \left(\frac{Q_s}{z_s}\right)^{\frac{1}{2}} Z, \quad (4.5)$$

where Z is the flat coordinate. The quantities that we compute in the B model will be functions of z_t, z_s, z , and we will have to reexpress them in terms of the flat coordinates Q_t, Q_s, Z in order to compare them with the quantities computed in the A model.

As we explained in section 2, the spectral curve can be read from $v(z)$. In terms of $p = z^{-1}$ we find

$$y(p) = \frac{2}{p} \tanh^{-1} \left[\frac{\sqrt{(z_s - p + p^2)^2 - 4z_t p^2}}{z_s - p + p^2} \right]. \quad (4.6)$$

This spectral curve has four branch points, given by

$$x_{1,2} = \frac{1}{2} - \sqrt{z_t} \mp \frac{1}{2} \sqrt{(1 + 2\sqrt{z_t})^2 - 4z_s}, \quad x_{3,4} = \frac{1}{2} + \sqrt{z_t} \pm \frac{1}{2} \sqrt{(1 - 2\sqrt{z_t})^2 - 4z_s}. \quad (4.7)$$

The labeling of the cuts has been chosen in such a way that the cuts $(x_1, x_4), (x_2, x_3)$ shrink to zero size when $z_t = z_s = 0$. We can now use the explicit expression (2.44) to extract the generating function $A(p, q)$ of annulus amplitudes for outer branes, and we have to reexpress the result in terms of the flat coordinates. The open mirror map is the same for both the two open moduli, therefore we will set $p = z_1^{-1}, q = z_2^{-1}$ and use (4.5) for both. One obtains the following expansion,

$$\begin{aligned} A(Z_1, Z_2) = & \left(Q_t + 2Q_t Q_s + 4Q_t^2 Q_s + 6Q_t^3 Q_s + 36Q_t^2 Q_s^2 + 4Q_t Q_s^2 + 6Q_t Q_s^3 + \dots \right) Z_1 Z_2 \\ & + \left(Q_t + Q_t^2 + 2Q_t Q_s + 3Q_t Q_s^2 + 5Q_t Q_s^3 + 6Q_t^2 Q_s + 30Q_t^2 Q_s^2 + 10Q_t^3 Q_s + \dots \right) Z_1 Z_2^2 \\ & + \left(Q_t + 2Q_s Q_t + 3Q_s^2 Q_t + 4Q_s^3 Q_t + 3Q_t^2 + 12Q_s Q_t^2 + 40Q_s^2 Q_t^2 + Q_t^3 + 24Q_s Q_t^3 + \dots \right) Z_1 Z_2^3 \\ & + \left(Q_t + 2Q_s Q_t + 3Q_s^2 Q_t + 4Q_s^3 Q_t + \frac{5Q_t^2}{2} + 10Q_s Q_t^2 + 33Q_s^2 Q_t^2 + Q_t^3 + 20Q_s Q_t^3 + \dots \right) Z_1^2 Z_2^2 \\ & + \dots \end{aligned} \quad (4.8)$$

Notice that this satisfies the integrality conditions (2.19). The above result can be compared to that obtained with the topological vertex. The total partition function for this geometry can be written as

$$Z_{\mathbb{P}^1 \times \mathbb{P}^1} = \sum_{R_i} Q_t^{\ell(R_1) + \ell(R_3)} Q_s^{\ell(R_2) + \ell(R_4)} q^{\sum_i \kappa_{R_i} / 2} C_{0R_4 R_1^t} C_{0R_1 R_2^t} C_{0R_2 R_3^t} C_{0R_3 R_4^t}. \quad (4.9)$$

The generating functional for the open string amplitudes in the presence of an outer brane is given again by (3.23), where now Z_R is given by

$$Z_R = \sum_{R_i} Q_t^{\ell(R_1)+\ell(R_3)} Q_s^{\ell(R_2)+\ell(R_4)} q^{\sum_i \kappa_{R_i}/2} C_{RR_4 R_1^t} C_{0R_1 R_2^t} C_{0R_2 R_3^t} C_{0R_3 R_4^t}. \quad (4.10)$$

One can easily check that the annulus amplitudes computed from these vertex formulae agree with the expansion (4.8).

It is possible to check as well the open, three-hole amplitude at genus zero and the closed, genus one amplitude F_1 , by using the formulae presented in section 2. We need the first moments of the function $M(p)$, which are given by

$$M(x_i) = \frac{2}{x_i(z_s - x_i + x_i^2)}, \quad i = 1, \dots, 4. \quad (4.11)$$

One finds, for example,

$$F_0(Z_1, Z_2, Z_3) = \left(Q_t + 2Q_s Q_t + 3Q_s^2 Q_t + 5Q_s^3 Q_t + 7Q_s^4 Q_t + Q_t^2 + 6Q_s Q_t^2 + 40Q_s^2 Q_t^2 + 189Q_s^3 Q_t^2 + 10Q_s Q_t^3 + 217Q_s^2 Q_t^3 + 14Q_s Q_t^4 + \dots \right) Z_1 Z_2 Z_3 + \dots, \quad (4.12)$$

while for the genus one, closed string amplitude we find from (2.55) the expansion

$$F_1(Q_s, Q_t) = -\frac{1}{12} \log Q_t - \frac{Q_s}{6} - \frac{Q_s^2}{12} - \frac{Q_s^3}{18} - \frac{Q_s^4}{24} - \frac{Q_t}{6} - \frac{Q_s Q_t}{3} - \frac{Q_s^2 Q_t}{2} - \frac{2Q_s^3 Q_t}{3} - \frac{Q_t^2}{12} - \frac{Q_s Q_t^2}{2} + \frac{37Q_s^2 Q_t^2}{6} - \frac{Q_t^3}{18} - \frac{2Q_s Q_t^3}{3} - \frac{Q_t^4}{24} + \dots. \quad (4.13)$$

The worldsheet instanton contributions in this quantity are indeed the correct ones, but the classical part $-\log Q_t/12$ is asymmetric in that it only includes the t parameter. This is probably due to the fact that the disk amplitude we start with is itself asymmetric in its treatment of Q_t, Q_s . In fact, it is nice that this asymmetry does not affect the instanton part of F_1 , which is correctly reproduced.

This ends our tests for local $\mathbb{P}^1 \times \mathbb{P}^1$. We will now briefly consider the case of local \mathbb{P}^2 .

4.2 Local \mathbb{P}^2

The local \mathbb{P}^2 geometry has one Kähler parameter Q . The mirror can be described by

$$F(e^u, e^v) = e^u + z_t e^{-u-v} + e^v + 1, \quad (4.14)$$

where z_t is the linear sigma model parameter. The mirror map is given by

$$Q = z_t \exp \left[3 \sum_{k \geq 0} \frac{(3k-1)!}{(k!)^3} (-1)^k z_t^k \right], \quad (4.15)$$

and its inversion reads

$$z_t = Q + 6Q^2 + 9Q^3 + 56Q^4 - 300Q^5 + 3942Q^6 + \dots. \quad (4.16)$$

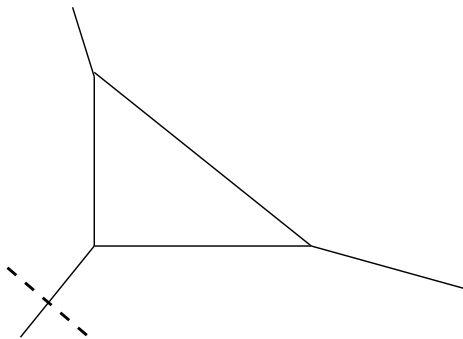


Figure 5: The outer brane in local \mathbb{P}^2 .

Let us now consider the disk amplitude for an outer brane in this geometry, shown in Fig. 5. This has been computed in [5, 46]. The function $v(z)$ is given by

$$v(z) = \log \left[\frac{1 + z + \sqrt{(1+z)^2 + 4z_t z^3}}{2} \right]. \quad (4.17)$$

The open mirror map for the outer brane is given by

$$z = \left(\frac{Q}{z_t} \right)^{\frac{1}{3}} Z, \quad (4.18)$$

where Z is the flat coordinate. After setting $z = p^{-1}$, we find the spectral curve

$$y = \frac{2}{p} \tanh^{-1} \left[\frac{\sqrt{p(p+1)^2 - 4z_t}}{p(p+1)} \right]. \quad (4.19)$$

The branch points of the curve are $x_1 = 0$ plus the roots of the cubic equation

$$x(x+1)^2 - 4z_t = 0. \quad (4.20)$$

In terms of

$$\xi = \left(1 + 54 z_t + 6 \sqrt{3} \sqrt{z_t (1 + 27 z_t)}\right)^{\frac{1}{3}} \quad (4.21)$$

they are given by

$$x_2 = -\frac{2}{3} + \frac{1}{3} \left(\omega \xi + \frac{1}{\omega \xi}\right), \quad x_3 = -\frac{2}{3} + \frac{1}{3} \left(\omega^* \xi + \frac{1}{\omega^* \xi}\right), \quad x_4 = \frac{(\xi - 1)^2}{3\xi}, \quad (4.22)$$

where $\omega = \exp(2i\pi/3)$.

We can now compute the annulus amplitude for the outer brane. We find the expansion,

$$\begin{aligned} A(Z_1, Z_2) = & \left(-Q + 4Q^2 - 35Q^3 + 400Q^4 - 5187Q^5 + \dots\right) Z_1 Z_2 \\ & + \left(Q - 3Q^2 + 24Q^3 - 261Q^4 + 3288Q^5 + \dots\right) Z_1 Z_2^2 \\ & + \left(-Q + 4Q^2 - 25Q^3 + 248Q^4 - 2970Q^5 + \dots\right) Z_1 Z_2^3 \\ & + \left(-Q + \frac{7Q^2}{2} - 20Q^3 + 194Q^4 - 2299Q^5 + \dots\right) Z_1^2 Z_2^2 + \dots, \end{aligned} \quad (4.23)$$

which again is in agreement with the results for the outer brane amplitudes obtained from the topological vertex. In this case, the total partition function is

$$Z_{\mathbb{P}^2} = \sum_{R_1, R_2, R_3} (-1)^{\sum_i \ell(R_i)} Q^{\sum_i \ell(R_i)} q^{-\sum_i \kappa_{R_i}} C_{0R_2^t R_3} C_{0R_1^t R_2} C_{0R_3^t R_1}, \quad (4.24)$$

and the amplitude for the outer brane with zero framing is obtained from

$$Z_R = \sum_{R_1, R_2, R_3} (-1)^{\sum_i \ell(R_i)} Q^{\sum_i \ell(R_i)} q^{-\sum_i \kappa_{R_i}} C_{RR_2^t R_3} C_{0R_1^t R_2} C_{0R_3^t R_1}, \quad (4.25)$$

We can again compute the three-hole, genus zero amplitude. The first moments are given by

$$M(x_i) = \frac{2}{x_i^2(x_i + 1)}, \quad i = 1, \dots, 4. \quad (4.26)$$

Notice that $M(p)$ diverges at the first branch point $x_1 = 0$. This is no problem for the three-hole amplitude (2.52), and simply means that the first term in the sum vanishes. One finds,

$$F_3(Z_1, Z_2, Z_3) = \left(-Q + 3Q^2 - 36Q^3 + 531Q^4 - 8472Q^5 + \dots\right) Z_1 Z_2 Z_3 + \dots, \quad (4.27)$$

again in agreement with a vertex computation. Of course, for the expression (2.55) we should subtract the diverging moment for $x_1 = 0$. Once this is done, one obtains the right expression for F_1 . This ends the tests of the formalism proposed in this paper.

A final comment on this example is in order. It is well-known that local \mathbb{P}^2 has a conifold point where closed topological string amplitudes diverge. This point corresponds to the critical value

$$z_t^{(c)} = -\frac{1}{27}. \quad (4.28)$$

The critical theory at this point should be the $c = 1$ string at self-dual radius [33]. It is interesting to notice that, from the point of the spectral curve (4.19), this corresponds to the point where x_3 and x_4 collide. When this happens the k^2 parameter (2.45) behaves like,

$$k^2 = 1 - 16(z_t - z_t^{(c)})^{\frac{1}{2}} + \dots, \quad (4.29)$$

and therefore the elliptic functions $E(k), K(k)$ exhibit logarithmic singularities [8]. In the context of matrix models it has not been clear how to interpret this critical behavior (see [27] for a recent analysis). Given the connection to topological strings, this has to be essentially equivalent to the $c = 1$ string, which exhibits indeed logarithmic violations of scaling. As far as we know, the connection between the $c = 1$ theory and the critical point of the two-cut matrix model discussed in [8, 27] has not been discussed before⁵. It would be very interesting to analyze the double-scaled theory as we did in section 3, and to extract the large order behavior through the study of the open sector.

5 Conclusions and open problems

In this paper we have proposed a formalism inspired on matrix models which allows us to compute in closed form open and closed string amplitudes of the type B topological string on toric backgrounds. This formalism exploits the result of [4, 2] which identifies the local B-model with the theory of a quantum chiral boson living on a Riemann surface. Since the general solution of matrix models on a spectral curve can be identified with such a quantum theory, we conclude that the rich results developed in the study of loop equations of matrix models can be applied in this context.

Notice that the “effective” matrix model description introduced here is rather different from the multi-matrix models of [49, 3]. Those models are parametrized directly by the flat coordinates, which appear either in the action or through the ranks of the matrix fields. In the formalism of this paper, the parameters entering into the description are not flat coordinates, and one has to use the mirror map (open and closed) to translate the answers into a suitable form for comparing with the A model.

⁵It was however suggested in [54] that there should be an interesting connection between $c = 1$ and two-cut matrix models.

Of course, the results of Dijkgraaf and Vafa in [25] provided a direct connection between matrix models and Calabi–Yau geometry, but the backgrounds analyzed in [25] are in a sense orthogonal to the ones that appear in Gromov–Witten theory and in the theory of the topological vertex. Here we have seen how to fit the latter in the matrix model formalism, and we have tested these ideas in various examples. The case of local curves is particularly interesting due to the connection of these backgrounds with 2d gravity. This makes possible to find the instanton effects responsible for the large order behavior of topological string theory on those manifolds.

Let us finish this paper with a list of open problems and directions for further research.

- From a mathematical point of view, the results of this paper offer a wealth of mirror conjectures about the open string sector of toric Calabi–Yau manifolds. It should be possible to generalize the analysis of [34], which proved a mirror conjecture for the disk amplitude, to the case of annulus amplitudes and beyond. Of course, if our formalism holds in general, one should be able to prove directly in Gromov–Witten theory that the generating functionals of open (or relative) Gromov–Witten invariants satisfy the recursion relations typical of loop equations found in [26, 29]. Since these invariants are given by sums over partitions, our formalism is equivalent to asserting that the corrections to the saddle–point of these sums satisfy the loop equations of an “effective” matrix model, at least for this class of examples.
- More tests of our formalism are needed in order to understand amplitudes with higher g and h , and in particular the implications for the closed string sector. But more importantly, in its current form this formalism only applies to amplitudes for outer branes, and one should generalize it to general configurations of branes in these geometries. A hint to understand this is given by the following observation: one can analyze the disk amplitude in terms of an open generalization of Picard–Fuchs equations [46, 47, 32], and it is known that outer and inner branes are on different sides of a phase transition which moreover involves different mirror maps. We expect that the same universal expressions in terms of non–flat coordinates (like (2.44)) hold for all branes, but that one has to use different open mirror maps in different phases, leading in this way to the different expressions for open string amplitudes that one finds in the A model. After all, in the B–model outer and inner branes should be smoothly connected, since the Riemann surface described by (2.11) smooths out the toric diagram of the A model⁶. The mirror map for inner branes mixes open and closed coordinates in a nontrivial way [46], and one should

⁶This issue has been emphasized and discussed in [39].

probably work out a more general Picard–Fuchs system involving both the closed moduli and the h open moduli z_i appearing in the general amplitude (2.4).

- As we mentioned in the introduction, it is not known what is the analogue of the holomorphic anomaly equations for open strings. However, by using the results of [29], it is possible [28] to find the holomorphic anomaly equations satisfied by the functions $W_g(z_1, \dots, z_h)$ defined by the recursive procedure of [26, 20, 29] (the holomorphic anomaly equation for the annulus amplitude is written down in (2.36)). It is likely that these equations, which are in principle valid in the local case, give a strong hint of the structure of the holomorphic anomaly equations for open strings in the general case. Of course, one advantage of the procedure of this paper is that it is a recursive B–model calculation which does not exhibit the ambiguity of [14]. The holomorphic anomaly equations can be used to determine closed string amplitudes on local Calabi–Yau manifolds [42, 37], and it has been recently shown that for these backgrounds the holomorphic ambiguity can be fixed from a “gap” behavior at the conifold point [37]. It would be interesting to compare the formalism of this paper in the closed case with the procedure of [42, 37], and to explore in more detail the modular properties of the open string amplitudes.
- From the results of [17] and of section 3 of this paper, it seems that a way to understand certain nonperturbative aspects of topological string theory is to relate them to noncritical string theories, where these aspects are better understood. When discussing local \mathbb{P}^2 we mentioned that there should be a double–scaling limit of the spectral curve (4.19) which gives the $c = 1$ string. This would give a novel realization of the $c = 1$ string through a critical point of a two–cut effective matrix model, closely related to the “birth of a cut” transition studied in [8, 27]. A better understanding of this realization would shed new light on nonperturbative aspects of topological string theory on local \mathbb{P}^2 , like for example the identification of instanton configurations. In the case of $\mathbb{P}^1 \times \mathbb{P}^1$, there is besides the $c = 1$ limit a geometric engineering regime which leads to the $SU(2)$ Seiberg–Witten theory [40]. The specialization of our formalism to this regime would give an effective matrix model description of Nekrasov’s instanton expansion and its gravitational corrections [56].

Acknowledgments

I would like to thank Gernot Akemann, Luis Álvarez–Gaumé, Nicola Caporaso, Bertrand Eynard, César Gómez, Luca Griguolo, Amir Kashani–Poor, Volodya Kazakov, Albrecht

Klemm, Ivan Kostov, Wolfgang Lerche, Sara Pasquetti, Domenico Seminara and Eric Zaslow for useful discussions.

References

- [1] M. Aganagic, V. Bouchard and A. Klemm, “Topological strings and (almost) modular forms,” arXiv:hep-th/0607100.
- [2] M. Aganagic, R. Dijkgraaf, A. Klemm, M. Mariño and C. Vafa, “Topological strings and integrable hierarchies,” *Commun. Math. Phys.* **261**, 451 (2006) [arXiv:hep-th/0312085].
- [3] M. Aganagic, A. Klemm, M. Mariño and C. Vafa, “Matrix model as a mirror of Chern-Simons theory,” *JHEP* **0402**, 010 (2004) [arXiv:hep-th/0211098].
- [4] M. Aganagic, A. Klemm, M. Mariño and C. Vafa, “The topological vertex,” *Commun. Math. Phys.* **254**, 425 (2005) [arXiv:hep-th/0305132].
- [5] M. Aganagic, A. Klemm and C. Vafa, “Disk instantons, mirror symmetry and the duality web,” *Z. Naturforsch. A* **57**, 1 (2002) [arXiv:hep-th/0105045].
- [6] M. Aganagic, H. Ooguri, N. Saulina and C. Vafa, “Black holes, q-deformed 2d Yang-Mills, and non-perturbative topological strings,” *Nucl. Phys. B* **715**, 304 (2005) [arXiv:hep-th/0411280].
- [7] M. Aganagic and C. Vafa, “Mirror symmetry, D-branes and counting holomorphic discs,” arXiv:hep-th/0012041.
- [8] G. Akemann, “Higher genus correlators for the Hermitian matrix model with multiple cuts,” *Nucl. Phys. B* **482**, 403 (1996) [arXiv:hep-th/9606004].
- [9] S. Y. Alexandrov, V. A. Kazakov and D. Kutasov, “Non-perturbative effects in matrix models and D-branes,” *JHEP* **0309**, 057 (2003) [arXiv:hep-th/0306177].
- [10] L. Álvarez-Gaumé, G. W. Moore and C. Vafa, “Theta functions, modular invariance, and strings,” *Commun. Math. Phys.* **106**, 1 (1986).
- [11] J. Ambjorn and G. Akemann, “New universal spectral correlators,” *J. Phys. A* **29**, L555 (1996) [arXiv:cond-mat/9606129].

- [12] J. Ambjorn, L. Chekhov, C. F. Kristjansen and Y. Makeenko, “Matrix model calculations beyond the spherical limit,” Nucl. Phys. B **404**, 127 (1993) [Erratum-ibid. B **449**, 681 (1995)] [arXiv:hep-th/9302014].
- [13] J. Ambjorn, J. Jurkiewicz and Yu. M. Makeenko, “Multiloop correlators for two-dimensional quantum gravity,” Phys. Lett. B **251**, 517 (1990).
- [14] M. Bershadsky, S. Cecotti, H. Ooguri and C. Vafa, “Kodaira-Spencer theory of gravity and exact results for quantum string amplitudes,” Commun. Math. Phys. **165**, 311 (1994) [arXiv:hep-th/9309140].
- [15] G. Bonnet, F. David and B. Eynard, “Breakdown of universality in multi-cut matrix models,” J. Phys. A **33**, 6739 (2000) [arXiv:cond-mat/0003324].
- [16] J. Bryan and R. Pandharipande, “The local Gromov-Witten theory of curves,” [arXiv:math.AG/0411037.]
- [17] N. Caporaso, L. Griguolo, M. Mariño, S. Pasquetti and D. Seminara, “Phase transitions, double-scaling limit, and topological strings,” arXiv:hep-th/0606120.
- [18] L. Chekhov, “Genus one correction to multi-cut matrix model solutions,” Theor. Math. Phys. **141**, 1640 (2004) [Teor. Mat. Fiz. **141**, 358 (2004)] [arXiv:hep-th/0401089].
- [19] L. Chekhov and B. Eynard, “Hermitean matrix model free energy: Feynman graph technique for all genera,” JHEP **0603**, 014 (2006) [arXiv:hep-th/0504116].
- [20] L. Chekhov, B. Eynard and N. Orantin, “Free energy topological expansion for the 2-matrix model,” arXiv:math-ph/0603003.
- [21] F. David, “Phases Of The Large N Matrix Model And Nonperturbative Effects In 2-D Gravity,” Nucl. Phys. B **348**, 507 (1991); “Nonperturbative effects in two-dimensional quantum gravity,” in D.J. Gross, T. Piran and S. Weinberg (eds.), *Two-dimensional quantum gravity and random surfaces*, World Scientific, Singapore, 1992.
- [22] B. de Wit, G. Lopes Cardoso, D. Lust, T. Mohaupt and S. J. Rey, “Higher-order gravitational couplings and modular forms in $N = 2$, $D = 4$ heterotic string compactifications,” Nucl. Phys. B **481**, 353 (1996) [arXiv:hep-th/9607184].
- [23] P. Di Francesco, P. Ginsparg and J. Zinn-Justin, “2-D Gravity and random matrices,” Phys. Rept. **254**, 1 (1995) [arXiv:hep-th/9306153].

- [24] R. Dijkgraaf, A. Sinkovics and M. Temurhan, “Matrix models and gravitational corrections,” *Adv. Theor. Math. Phys.* **7**, 1155 (2004) [arXiv:hep-th/0211241].
- [25] R. Dijkgraaf and C. Vafa, “Matrix models, topological strings, and supersymmetric gauge theories,” *Nucl. Phys. B* **644**, 3 (2002) [arXiv:hep-th/0206255].
- [26] B. Eynard, “Topological expansion for the 1-hermitian matrix model correlation functions,” *JHEP* **0411**, 031 (2004) [arXiv:hep-th/0407261].
- [27] B. Eynard, “Universal distribution of random matrix eigenvalues near the ”birth of a cut” transition,” arXiv:math-ph/0605064.
- [28] B. Eynard and M. Mariño, work in progress.
- [29] B. Eynard and N. Orantin, to appear.
- [30] B. Forbes and M. Jinzenji, “J functions, non-nef toric varieties and equivariant local mirror symmetry of curves,” arXiv:math.ag/0603728. “Local mirror symmetry of curves: Yukawa couplings and genus 1,” arXiv:math.ag/0609016.
- [31] P. H. Ginsparg and G. W. Moore, “Lectures on 2-D gravity and 2-D string theory,” arXiv:hep-th/9304011.
- [32] S. Govindarajan, T. Jayaraman and T. Sarkar, “Disc instantons in linear sigma models,” *Nucl. Phys. B* **646**, 498 (2002) [arXiv:hep-th/0108234].
- [33] D. Ghoshal and C. Vafa, “ $c = 1$ String As The Topological Theory Of The Conifold,” *Nucl. Phys. B* **453**, 121 (1995) [arXiv:hep-th/9506122].
- [34] T. Graber and E. Zaslow, “Open string Gromov-Witten invariants: Calculations and a mirror ’theorem’,” arXiv:hep-th/0109075.
- [35] S. Hikami and E. Brézin, “Large Order Behavior Of The $1/N$ Expansion In Zero-Dimensions And One-Dimensions,” *J. Phys. A* **12**, 759 (1979).
- [36] K. Hori, S. Katz, A. Klemm, R. Pandharipande, R. Thomas, C. Vafa, R. Vakil, E. Zaslow, *Mirror symmetry*, AMS, Providence, 2003.
- [37] M. x. Huang and A. Klemm, “Holomorphic anomaly in gauge theories and matrix models,” arXiv:hep-th/0605195.
- [38] S. Hyun and S. H. Yi, “Non-compact topological branes on conifold,” *JHEP* **0611**, 075 (2006) [arXiv:hep-th/0609037].

- [39] A. K. Kashani-Poor, “The wave function behavior of the open topological string partition function on the conifold,” arXiv:hep-th/0606112.
- [40] S. H. Katz, A. Klemm and C. Vafa, “Geometric engineering of quantum field theories,” Nucl. Phys. B **497**, 173 (1997) [arXiv:hep-th/9609239].
- [41] A. Klemm, M. Mariño and S. Theisen, “Gravitational corrections in supersymmetric gauge theory and matrix models,” JHEP **0303**, 051 (2003) [arXiv:hep-th/0211216].
- [42] A. Klemm and E. Zaslow, “Local mirror symmetry at higher genus,” arXiv:hep-th/9906046.
- [43] I. K. Kostov, “Conformal field theory techniques in random matrix models,” arXiv:hep-th/9907060.
- [44] J. M. F. Labastida, M. Mariño and C. Vafa, “Knots, links and branes at large N,” JHEP **0011**, 007 (2000) [arXiv:hep-th/0010102].
- [45] J. C. Le Guillou and J. Zinn-Justin, eds., *Large order behavior of perturbation theory*, North-Holland, Amsterdam, 1990.
- [46] W. Lerche and P. Mayr, “On $N = 1$ mirror symmetry for open type II strings,” arXiv:hep-th/0111113.
- [47] W. Lerche, P. Mayr and N. Warner, “Holomorphic $N = 1$ special geometry of open-closed type II strings,” arXiv:hep-th/0207259.
- [48] J. M. Maldacena, G. W. Moore, N. Seiberg and D. Shih, “Exact vs. semiclassical target space of the minimal string,” JHEP **0410**, 020 (2004) [arXiv:hep-th/0408039].
- [49] M. Mariño, “Chern-Simons theory, matrix integrals, and perturbative three-manifold invariants,” Commun. Math. Phys. **253**, 25 (2004) [arXiv:hep-th/0207096].
- [50] M. Mariño, “Chern-Simons theory and topological strings,” Rev. Mod. Phys. **77** (2005) 675 [arXiv:hep-th/0406005]. *Chern–Simons theory, matrix models, and topological strings*, Oxford University Press, 2005.
- [51] M. Mariño, “Les Houches lectures on matrix models and topological strings,” arXiv:hep-th/0410165.
- [52] M. Mariño and C. Vafa, “Framed knots at large N,” arXiv:hep-th/0108064.

- [53] P. Mayr, “Summing up open string instantons and $N = 1$ string amplitudes,” arXiv:hep-th/0203237.
- [54] G. W. Moore, “Double scaled field theory at $c = 1$,” Nucl. Phys. B **368**, 557 (1992).
- [55] A. Neitzke and C. Vafa, “Topological strings and their physical applications,” arXiv:hep-th/0410178.
- [56] N. A. Nekrasov, “Seiberg-Witten prepotential from instanton counting,” Adv. Theor. Math. Phys. **7**, 831 (2004) [arXiv:hep-th/0206161].
- [57] K. Okuyama, “D-brane amplitudes in topological string on conifold,” arXiv:hep-th/0606048.
- [58] H. Ooguri, A. Strominger and C. Vafa, “Black hole attractors and the topological string,” Phys. Rev. D **70**, 106007 (2004) [arXiv:hep-th/0405146].
- [59] H. Ooguri and C. Vafa, “Knot invariants and topological strings,” Nucl. Phys. B **577**, 419 (2000) [arXiv:hep-th/9912123].
- [60] R. Pandharipande, J. Solomon and J. Walcher, “Disk enumeration on the quintic 3-fold,” arXiv:math.sg/0610901.
- [61] N. Seiberg and D. Shih, “Branes, rings and matrix models in minimal (super)string theory,” JHEP **0402**, 021 (2004) [arXiv:hep-th/0312170].
- [62] S. H. Shenker, “The strength of nonperturbative effects in string theory,” in O. Álvarez, E. Marinari and P. Windey (eds.), *Random surfaces and quantum gravity*, Plenum, New York, 1992.
- [63] M. Vonk, “A mini-course on topological strings,” arXiv:hep-th/0504147.
- [64] J. Walcher, “Opening mirror symmetry on the quintic,” arXiv:hep-th/0605162.
- [65] E. Witten, “Chern-Simons Gauge Theory As A String Theory,” Prog. Math. **133**, 637 (1995) [arXiv:hep-th/9207094].